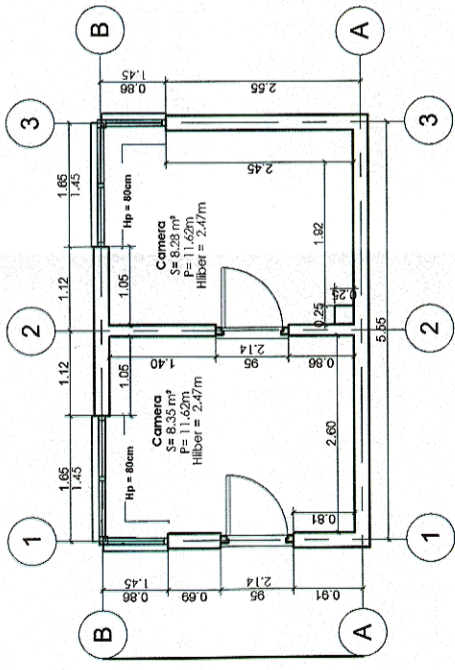
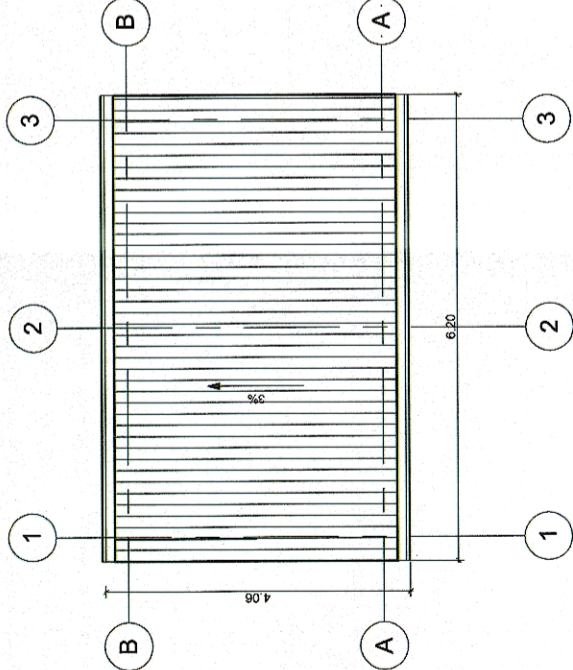


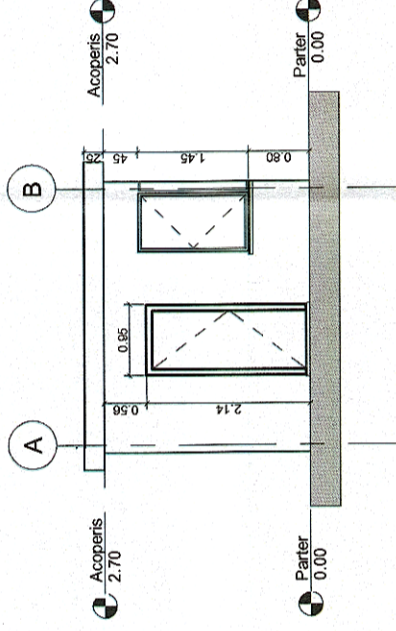
Cabina dubla acari Oradea Est - Plan parter



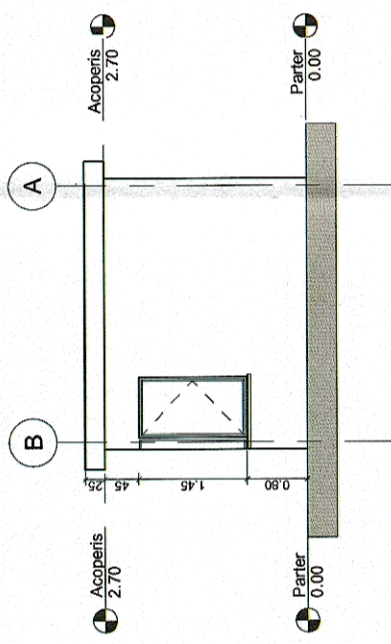
Cabina dubla acari Oradea Est - Plan învelitoare



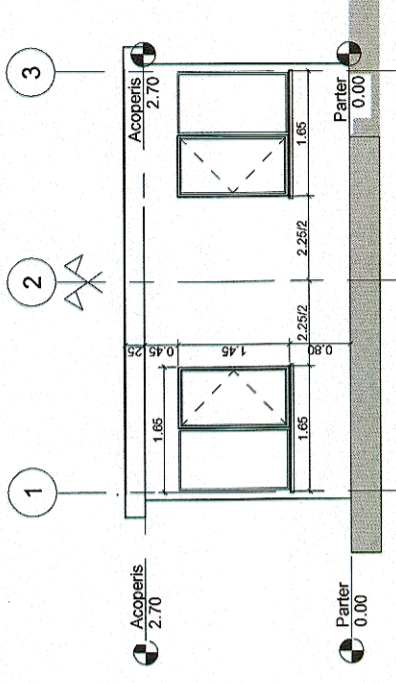
Cabina dubla acari Oradea Est - Fațada laterala



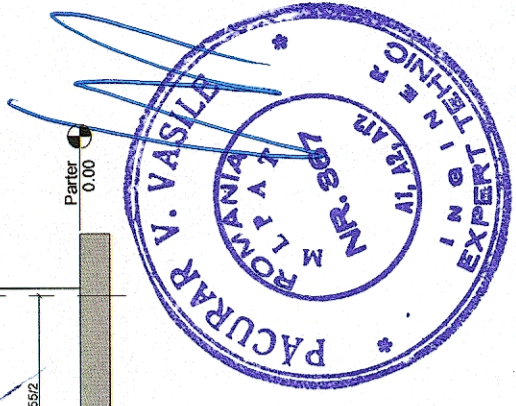
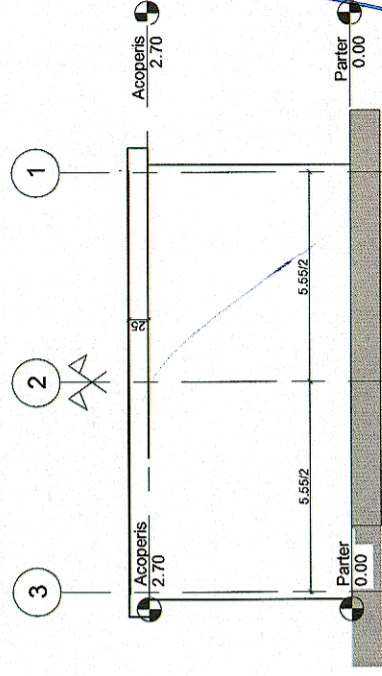
Cabina dubla acari Oradea Est - Fațada laterala





Cabina dubla acari Oradea Est - Fațada laterala



Cabina dubla acari Oradea Est - Fațada laterala



 <b>GUVERNUL ROMÂNIEI</b>		 <b>P.O.I.M.</b>		 <b>PROIECT FINANȚAT DE UNIUNEA EUROPEANĂ</b>	
 <b>BENEFICIAR:</b>		<b>COMPANIA NAȚIONALĂ DE CĂI FERATE C.N.C.F. "C.F.R." S.A.</b>			
<b>PROIECTANT:</b> <b>ASOCIEREA:</b>		 <b>acciona</b> & 			
<b>EXPERT SECUNDAR</b> <b>EXPERT PRINCIPAL</b> <b>CEC/MP</b>		<b>NUME</b> Vasile PĂCURAR Mihaela STAIUCI Stelian VARĂ-OROS		<b>SEMNATURA</b> 	
<b>DATA:</b> 10.2017		<b>SCARA:</b> 1:100		<b>DENUMIRE PROIECT:</b> REACTUALIZARE STUDIU DE FEZABILITATE PENTRU "ELECTRIFICAREA ȘI REABILITAREA LINIEI DE CALE FERATĂ CLUJ - ORADEA - EPISCOPIA BIHOR"	
<b>EXEMPLAR NR.:</b>		<b>OBIECT:</b> LUCRĂRI CIVILE ÎN STAȚII		JUDEȚUL BIHOR STAȚIA ORADEA EST - CABINĂ DUBLĂ ACARI PLAN ÎNVELITOARE SI FAȚADE	
<b>ET</b>		<b>L0</b>		<b>41 R004 001 000</b>	