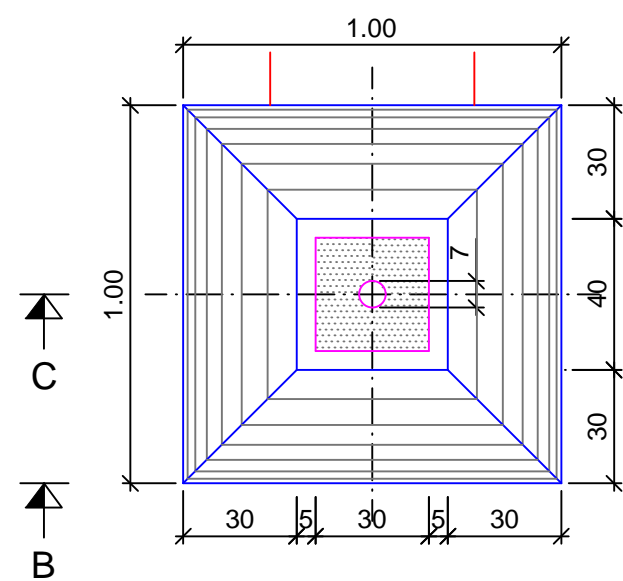


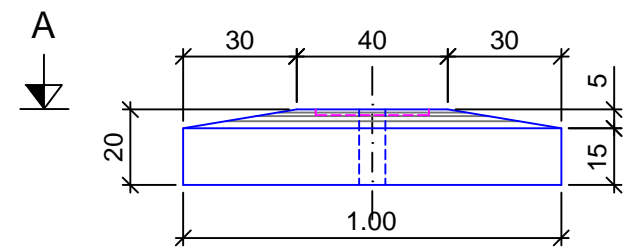
**PLAN COFRAJ
FORMWORK PLAN**

Sc. 1:20

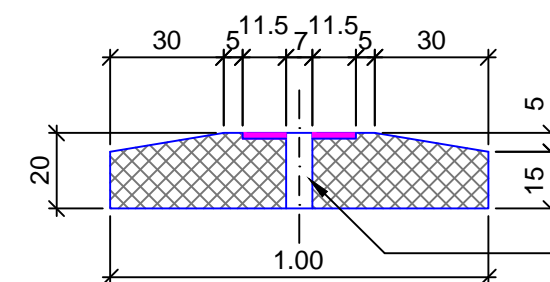
VEDERE A-A'
VIEW A-A'



VEDERE B-B'
VIEW B-B'



SECȚIUNE C-C'
SECTION C-C'

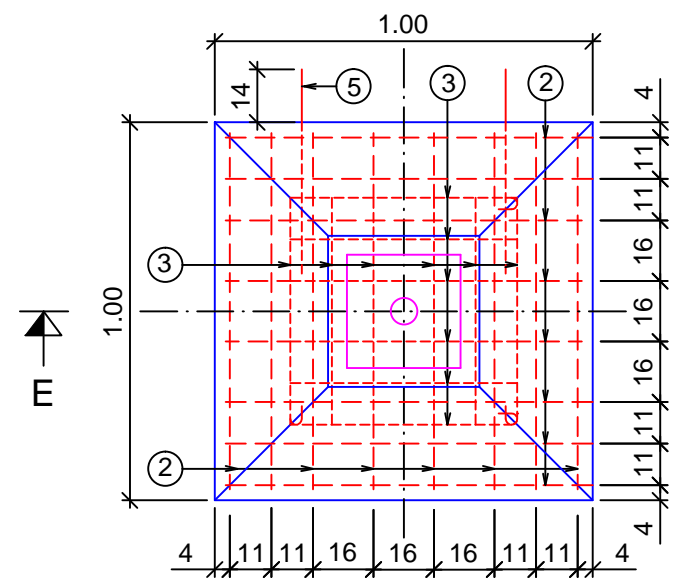


Tub PVC Ø 70mm
PVC tube of Ø 70mm

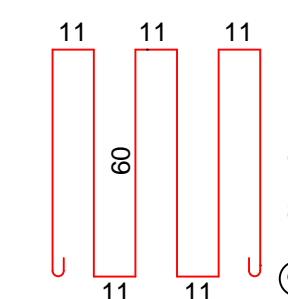
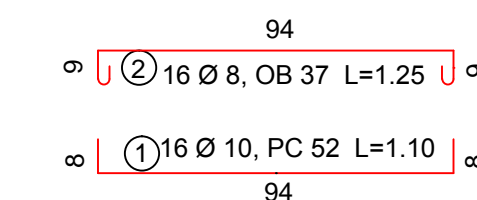
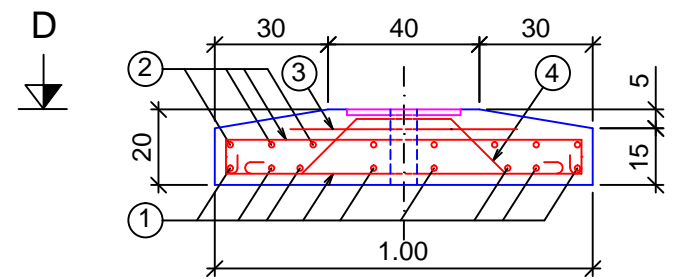
**PLAN ARMARE
REINFORCING PLAN**

Sc. 1:20

SECȚIUNE D-D'
SECTION D-D'



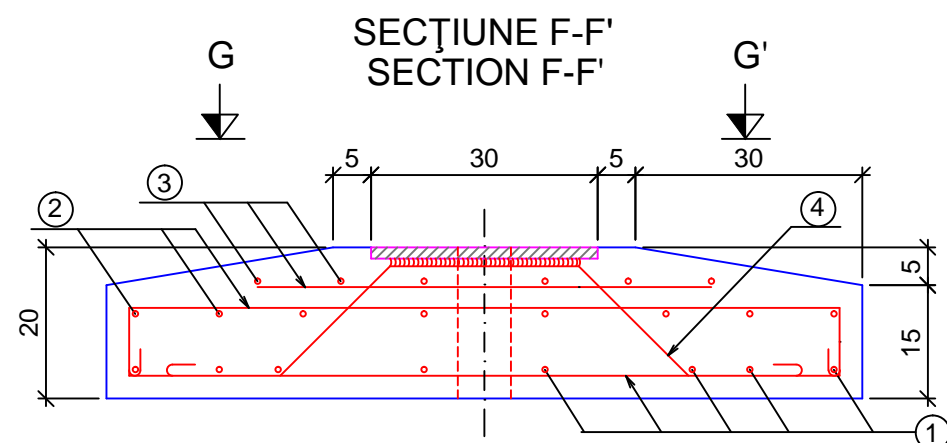
SECȚIUNE E-E'
SECTION E-E'



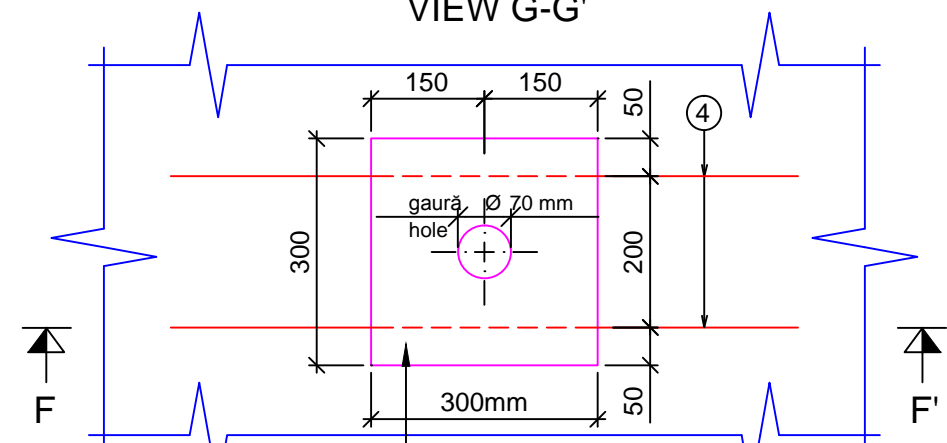
**DETALIU PLACA DE REPARTIȚIE
DISTRIBUTION PLATE DETAIL**

Sc. 1:10

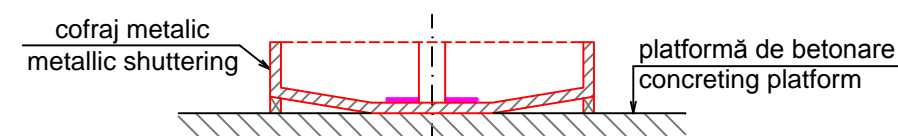
SECȚIUNE F-F'
SECTION F-F'



VEDERE G-G'
VIEW G-G'



placă metalică repartiție
OL37 300x300x15
metallic distribution plate
OL37 300x300x15



NOTĂ:

- Plăcile se vor turna ca în figura de mai sus
- Barele marca (4) se vor suda de plăcile metalice

NOTE:

- The plates will be cast as in the figure above
- The bars mark (4) shall be welded to the metallic plates.

**EXTRAS DE ARMATURĂ PENTRU O PLACĂ
LIST OF THE REINFORCING BARS FOR ONE PLATE**

MARCA TYPE	Ø	BUC. PIECE	L/BUC L/PIECE	L / Ø		
				Ø 6	Ø 8	Ø 12
1	10	16	1.10	-	-	17.60
2	8	16	1.25	-	20.00	-
3	6	2	4.30	8.60	-	-
4	8	2	1.10	-	2.20	-
5	10	2	1.45	-	-	2.90
TOTAL LUNGIMI / Ø TOTAL LENGTHS / Ø				8.60	22.20	20.50
GREUTATE / Ø / M.L. WEIGHT / Ø / M.L.				0.222	0.395	0.888
TOTAL GREUTATI / Ø TOTAL WEIGHT / Ø				1.91	8.77	12.65
TOTAL GREUTATI TOTAL WEIGHT				23.33 kg		
Pb 300x300x15-OL 37				10.53 kg		

Beton clasa / concrete class C 25/30
C 25/30 - S3 - SREN 206-1-CEM II/A-S 32.5 N / 0-16
Armături / Reinforcing bars OB 37 și / and PC 52
Acoperire / Covering: 3.0 cm

Volum beton / concrete volume: 0.18 m³ / pcs
Cofraje / formworks: 1.60 mp
Cordoane sudură / welding seam: 0.50m
Tub PVC / PVC tube Ø 70mm: 0.20m
Greutate element / element weight: 0.44 t / pcs

Indice Index	Data Date	Modificare Modification/Revision	Proiectant Designer	Aprobat Consultant Approved Consultant	Aprobat CFR Approved CFR
D					
C					
B					
A					



C.N.C.F. "C.F.R." - S.A.

CLIENT / CLIENT



CONSULTANT / CONSULTANT

Aprobat Approved	Șef proiect Project manager	R. Liuzza	Data Date	Semnătură Signature
Aprobat Approved	Coordonator Secțiune 1 Section 1 Coordinator	C. Gambelli	dec. 2011	
Verificat Checked	Expert Cheie Key Expert	A. Troiano	dec. 2011	

SUBCONTRACTANT / SUBCONTRACTOR

Aprobat Approved	Responsabil Subconsultant Subconsultant Responsible	A. Stanciu - Dinulescu		
Întocmit Elaborated	Proiectant Designer	V. Gradin		

Reabilitarea liniei de cale ferata Braşov - Simeria, parte componentă a coridorului IV Pan European, pentru circulația trenurilor cu viteză maximă de 160 km/h,
Tronsoanel: Braşov - Sighișoara
Rehabilitation of the railway line Braşov - Simeria, component Part of the IV Pan-European Corridor, for the trains circulation with maximum speed of 160 km/h,
Section: Braşov - Sighișoara

Proiect/Project
2004/RO/16/P/PA/003

Faza / Phase:

Denumire desen / Drawing Title :

DETALII PLACĂ ANCORATĂ / ANCHORED PLATE DETAILS

Codificare / Codification System	Scara / Scale 1:20, 1:10	LOT / LOT	Nr. / No 01 / 01
E A 5 1	0 1	E	0 0

Q C C T 0 0 0 X 0 2 0 0