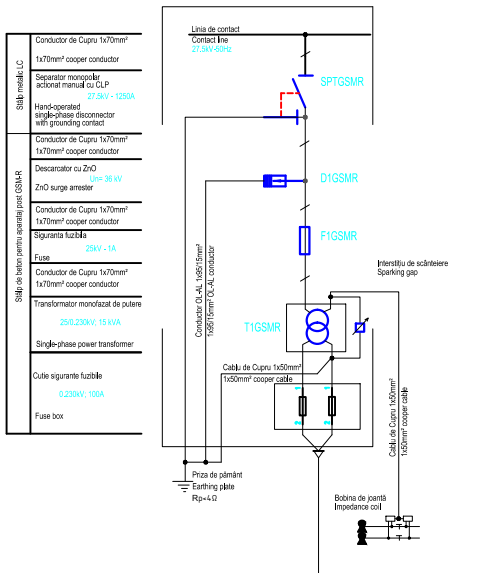


POST DE TRANSFORMARE GSM-R - 15kVA/27,5kV/230kV
15kVA-2.230/230kV - GSM-R TRANSFORMER POST



SITE 2: BRASOV bis	173+300	2 trasformer posts
SITE 6: MAIERUS	200+000	2 trasformer posts
SITE 8: APATA-ORMENIS	211+00	2 trasformer posts
SITE 12: HOMPROD-CATA	234+500	2 trasformer posts
SITE 14: PALOS	Near Palos	2 trasformer posts
SITE 15a: Tunnel BEIA	At the entrance of the tunnel BEIA	4 trasformer posts
SITE 16a: Tunnel ARCHITA 1	At the entrance of the tunnel Archita 1	4 trasformer posts
SITE 17a: Tunnel ARCHITA 2	At the entrance of the tunnel Archita 2	4 trasformer posts
SITE 19: FELEAG	262+000	2 trasformer posts
SITE 20a: Tunnel MURENI	At the entrance of the tunnel Mureni	4 trasformer posts

7.	Cutie de sigurante Box fuse -230V/ca-100A		1 pcs
6.	Bobina de protectie Protection coil		1 pcs
5.	Interstițiu de scântieiere Sparking gap		1 pcs
4.	Transformator de putere, 250/230kV 15kVA-250/230kV, Power transformer	T1GSMR	1 pcs
3.	Siguranță fuzibilă 25kV-2A 25kV-2A,fuse	F1GSMR	1 pcs
2.	Descărcător cu ZnO,36kV-10kA ZnO surge arrester, 36kV-10kA	D1GSMR	1 pcs
1.	Separator monopolar,act. man. cu CLP Hand-operated disconnector, 25kV-1250A	SPTGSMR	1 pcs
REF / ITEM	DENUMIRE REFERINTA / ITEM DESIGNATION	REFERINTA DWG / DWG REFERENCE	CANTITATE / QUANTITY

LISTA DE COMPONENTA -PTCED/ PTCED-ITEM LIST

D					
C					
B					
A					
Indice	Data	Modificare	Proiectant	Aprobat	Aprobat CFR
Indice	Data	Modificare	Designer	Approved Consultant	Approved CFR

GUVERNUL ROMANIEI
ROMANIAN GOVERNMENT

PROIECT FINANȚAT DE UNIUNEA EUROPEANĂ
EUROPEAN UNION FINANCED PROJECT

CFR

C.N.C.F. "C.F.R." - S.A.

CLIENT / CLIENT

GRUPUL FERROVIEI DELLO STATO
GRUPUL FERROVIEI DELLO STATO
Joint Venture leader

OBERMEYER
FERROVIE + INFRASTRUTTURE

TECNIC
Consulting Engineers

CONSULTANT / CONSULTANT

Aprobat	Self project	R. Liuzza	11.2011	
Approved	Coordinator			
Aprobat	Coordonator	C. Gambelli	11.2011	
Approved	Section 1			
Verificat	Expert Verifier	G. Buffarini	11.2011	
Checked	Checking Expert			

SUBCONTRACTANT / SUBCONTRACTOR

Aprobat	Responsabil Subcontractant	A.Stanciu - Dinulescu	11.2011	
Approved	Subcontractor Responsible			
Intocmit	Project Designer	M. Prioreanu	11.2011	
Elaborat	Designer			

Reabilitarea liniei de cale ferată Braşov - Simeria, parte componentă a coridorului IV Pan European, pentru circulația trenurilor cu viteză maximă de 160 km/h,
Tronsonul : Braşov - Sighişoara
Rehabilitation of the railway line Braşov - Simeria, component Part of the IV Pan-European Corridor, for the trains circulation with maximum speed of 160 km/h,
Section : Braşov - Sighişoara

Proiect/Project
2004/RO/16/PA/003

Faza / Phase:
P.Th. / T.D.

Denumire desen / Drawing Title :
POST DE TRANSFORMARE 15kVA-27,5/0,230kV GSM-R
15kVA-27.5/0.230kV-TRANSFORMER POST - GSM-R

Codificare / Codification System

Scara / Scale
1:1

LOT / LOT

Nr. / No
01 / 01

E A 5 1 0 1 C 0 0 D X E G 0 0 1 0 0 0 3 0