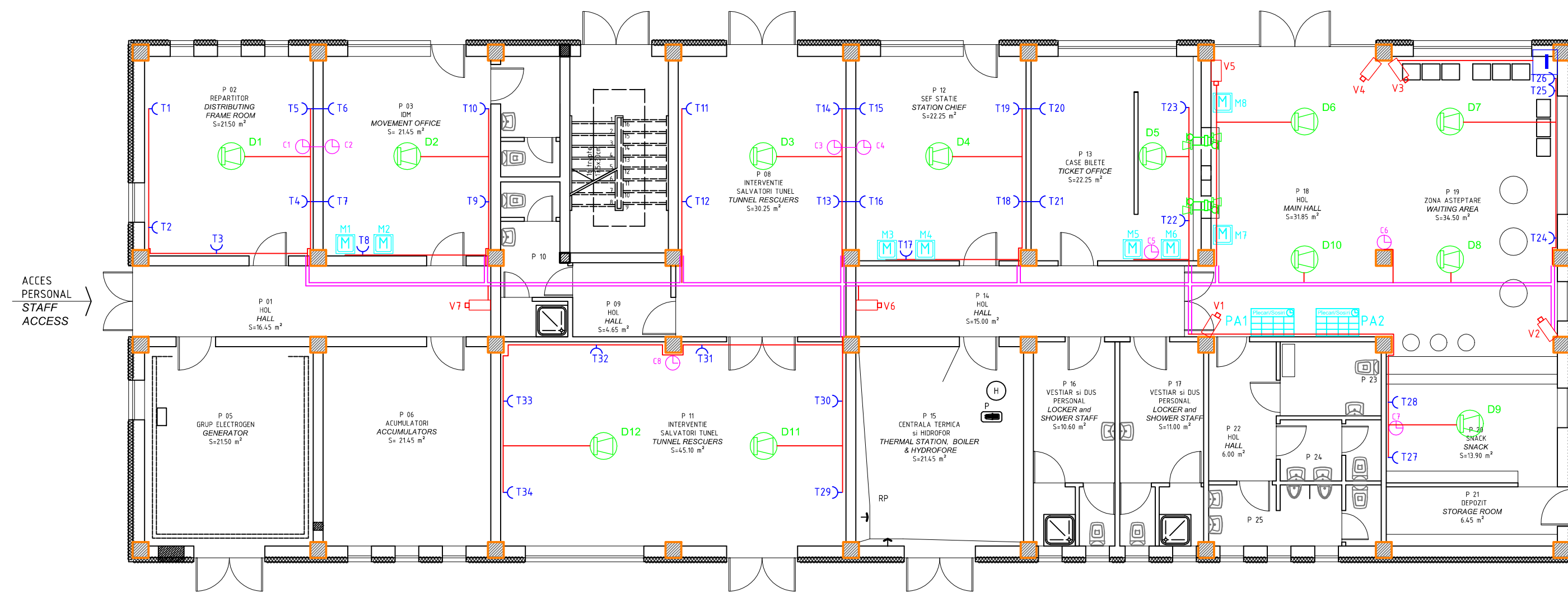
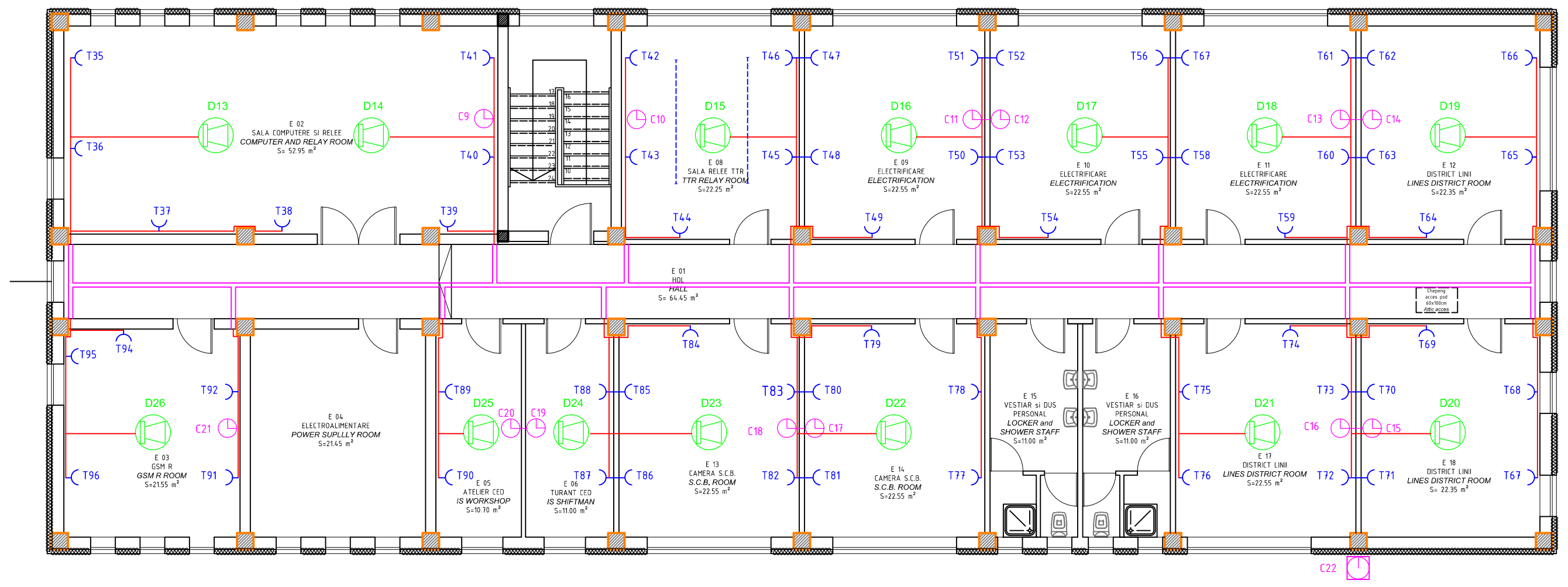


**PLAN PARTER
GROUND FLOOR PLAN**



**PLAN ETAJ
FIRST FLOOR PLAN**



**LEGENDA
LEGEND**

- Difuzor montat in plafonul fals
Loudspeaker mounted in the false ceiling
- Ceas de interior montat pe perete
Clock for inside mounted on the wall
- Ceas de exterior montat pe fatada
Clock for outside mounted on the facade
- Priza tip RJ-45 dubla
Double RJ-45 socket installed on the wall
- Monitor LCD montat pe perete
LCD monitor mounted on the wall
- Panou afisaj LCD sosiri/plecari suspendat sub plafonul fals
LCD display arrivals and departurs suspended under false ceiling
- Cameră video pentru supraveghere
Video cam for video surveillance
- Punct de informare pentru public calator
Information kiosk
- Interfon duplex cu microfoane si difuzoare
Duplex interfon with microphones and loudspeakers
- Canal de cable
Cable's support (metalic or plastic)

D					
C					
B					
A					
Indice	Data	Modificare Modification/Revision	Proiectant Designer	Aprobat Consultant Approved Consultant	Aprobat CFR Approved CFR

GUVERNUL ROMANIEI
ROMANIAN GOVERNMENT

PROIECT FINANȚAT DE UNIUNEA EUROPEANĂ
EUROPEAN UNION FINANCED PROJECT

C.N.C.F. "C.F.R." - S.A.

CLIENT / CLIENT

CONSULTANT / CONSULTANT			Data Date	Semnătură Signature
Aprobat Approved	Șef proiect Project manager	R. Liuzza	08.2011	
Aprobat Approved	Coordonator Secțiune 1 Section 1 Coordinator	C. Gambelli	08.2011	
Verificat Checked	Expert Cheie Key Expert	Pino Amodio	08.2011	

SUBCONTRACTANT / SUBCONTRACTOR			Data Date	Semnătură Signature
Aprobat Approved	Responsabil Subcontractant Subcontractor Responsible	A.Stanciu - Dinulescu	08.2011	
Intocmit Elaborated	Proiectant Designer	Gabriela Trifan	08.2011	

Reabilitarea liniei de cale ferata Braşov - Simeria, parte componentă a coridorului IV Pan European, pentru circulația trenurilor cu viteză maximă de 160 km/h,
Tronsoanel : Braşov - Sighişoara
 Rehabilitation of the railway line Braşov - Simeria, component Part of the IV Pan-European Corridor, for the trains circulation with maximum speed of 160 km/h,
Section : Braşov - Sighişoara

Project/Project
2004/RO/16/P/PA/003
Faza / Phase:
P.Th. / T.D.

Denumire desen / Drawing Title :
Plan cladire - Amplasarea echipamentelor Tc
Statia RACOS - RACOS Station
Building Layout - Location of Tc equipment

Codificare / Codification System	Scara / Scale	LOT / LOT	Nr. / No 01 / 01
EA51 01 C 11 PB TC 06 0 4 001 0			