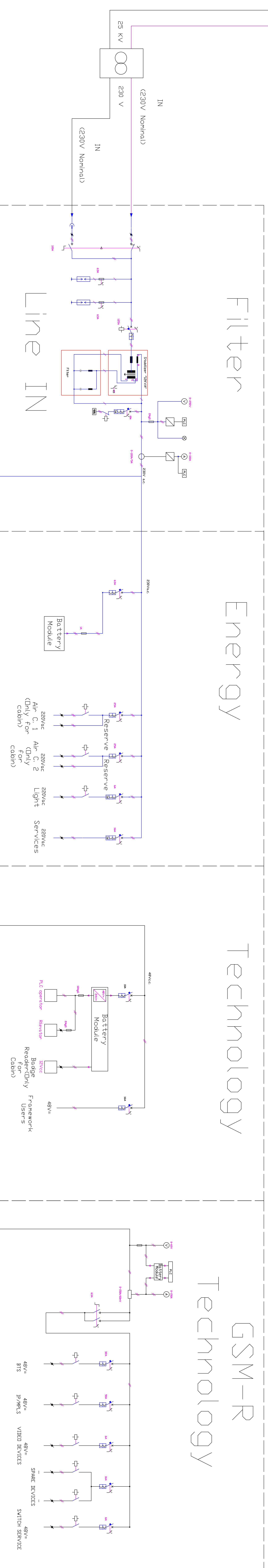


Cabin Power Supply Typological / Tipologie alimentare shelter

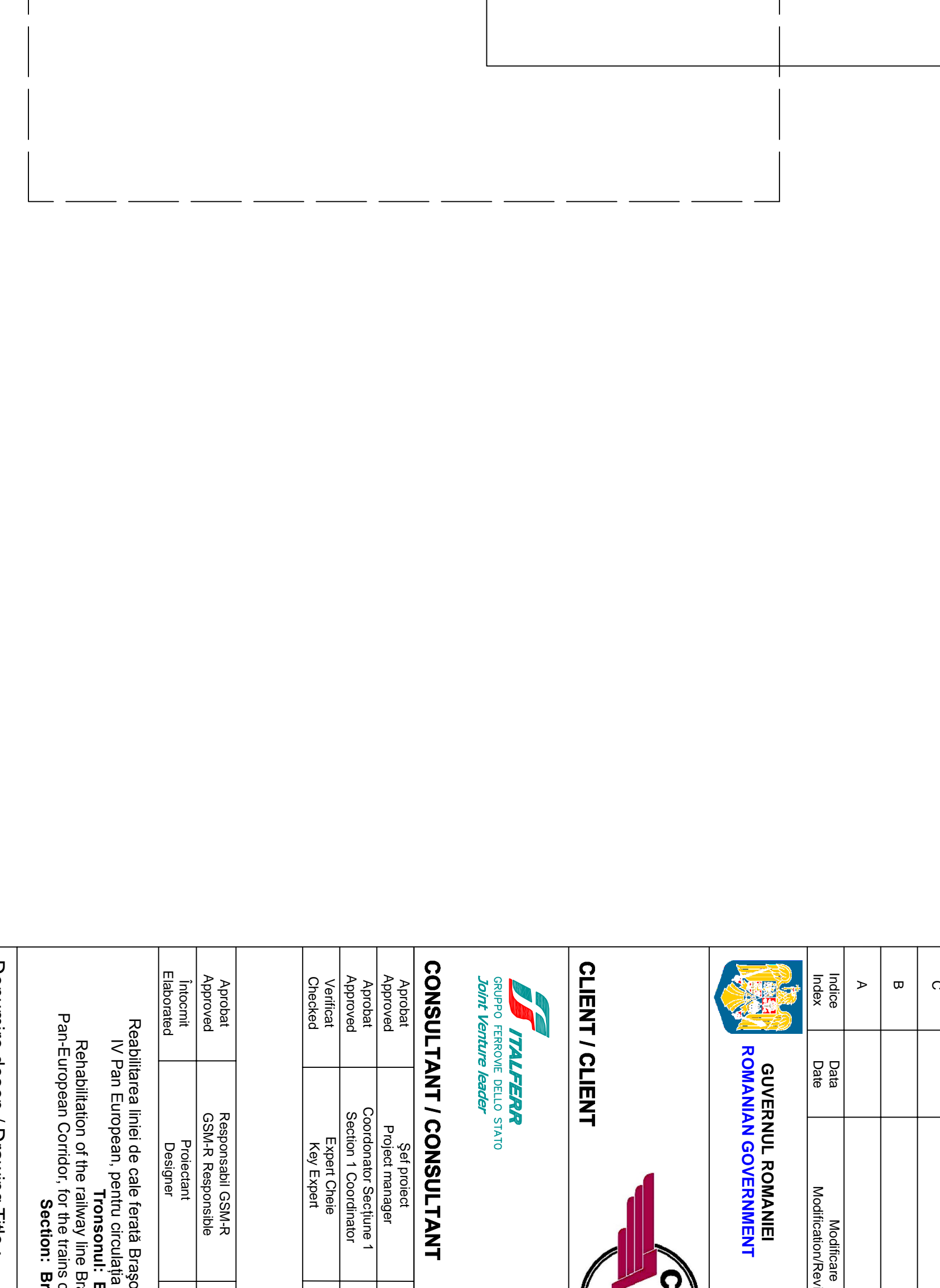
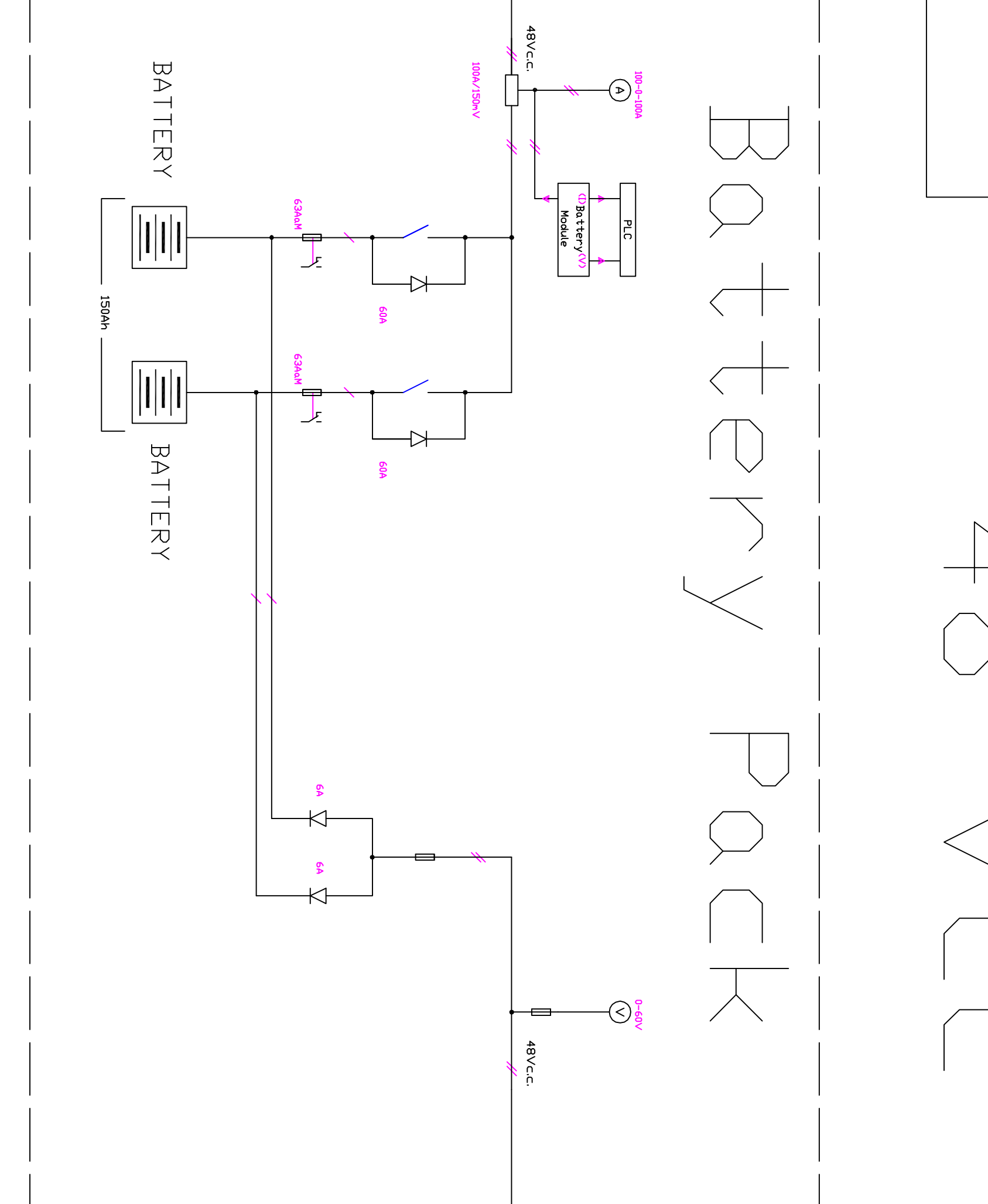
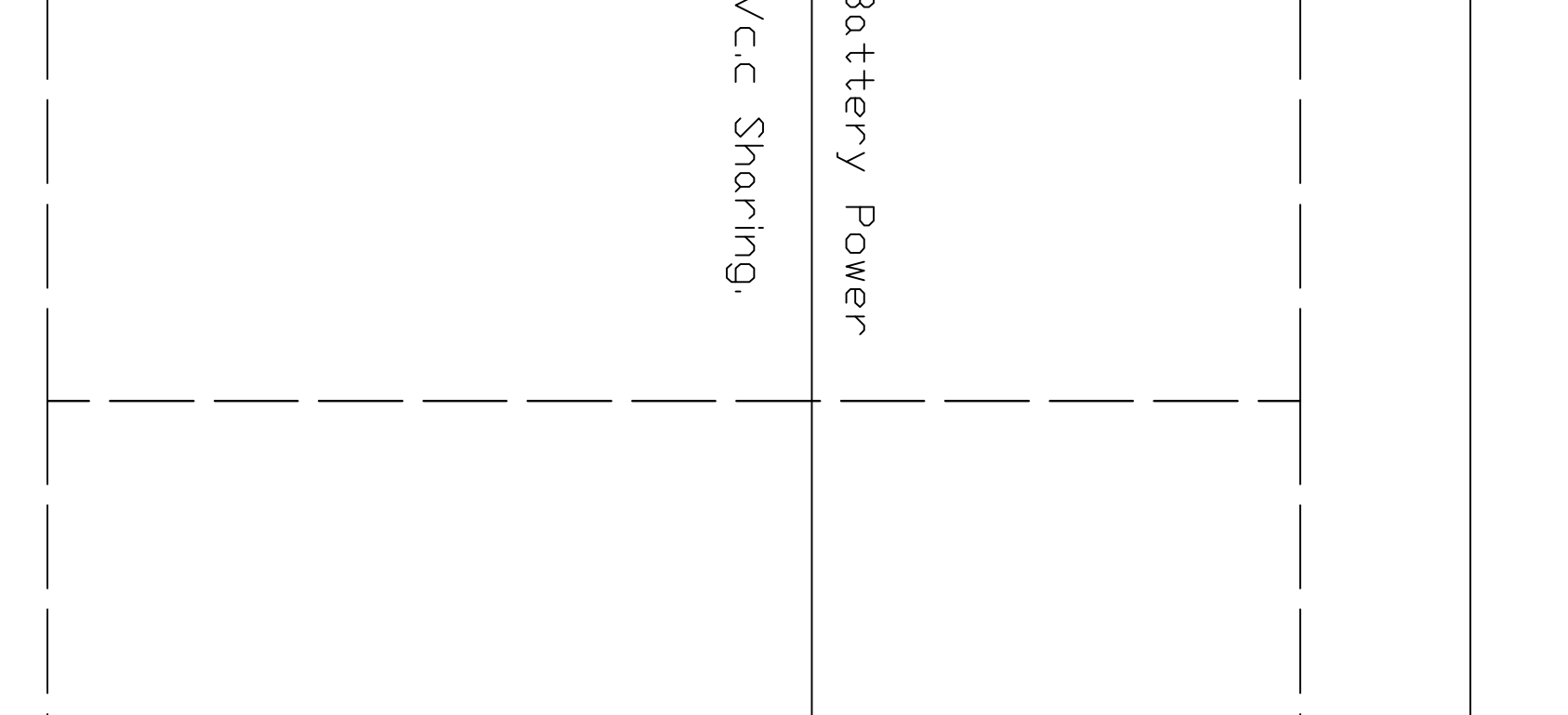
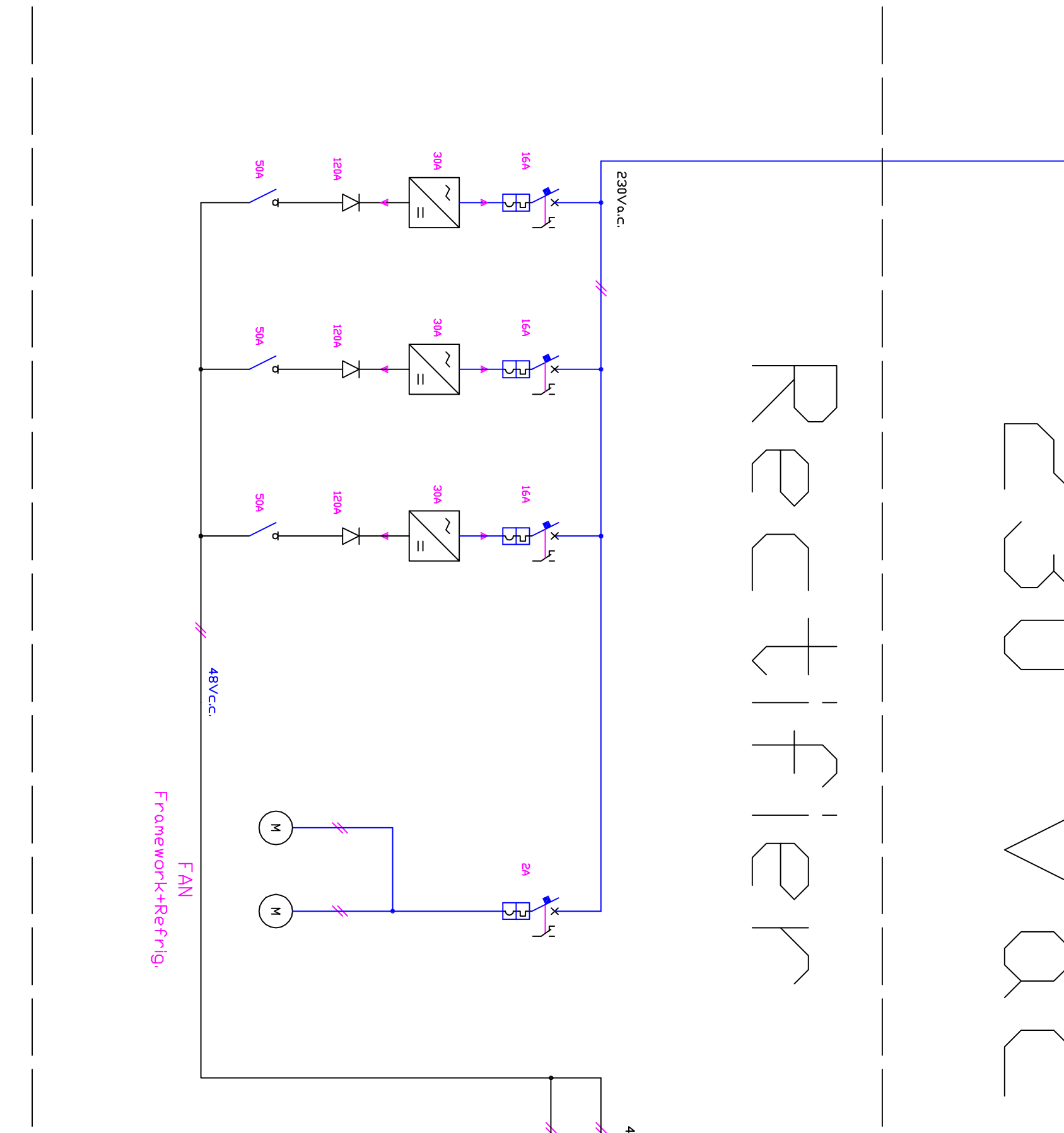
Over Head
Contact Line 2
/Lini de contact 2
25 kV - 50 Hz

Over Head
Contact Line 1
/Lini de contact 1
25 kV - 50 Hz



Legend/Legenda

	Electric Surge /Supratensiune		Programmable Logical Controller
	Stabilizer /Stabilizator		Voltmeter
	Filter /Filtru		Ammeter /Ampermetru
	Inductor		Commutator
	Transducer		Diode
	Four Module		Disconnecter
	Capacitor		Rectifier Module
	Resistor		Battery
	Bipolar Switch		Extruded heat Sink
	Fuse Bag		Pole Contactor
	Bipolar		



D								
C								
B								
A								
Index	Date	Modificarea	Proiectant	Approved Consultant	Approved CRF			
		Modificari/Revisiuni	Designer	Approved Consultant	Approved CRF			

GUVERNUL ROMANIEI / ROMANIAN GOVERNMENT
PROIECT FINANȚAT DE UNIUNEA EUROPEANĂ / FINANCED BY EUROPEAN UNION

CLIENT / CLIENT
CFR
C.N.C.F. "CFR" - S.A.

CONSULTANT / CONSULTANT
OBERMEYER
PALNENI - BERGHEA GIARDI
TECNIC
Consulting Engineers

Approved	Responsible GSM-R Designer	L. Redino	16-11-2011	
Approved	GSM-R Responsible Designer	G. Ciomperiza	14-11-2011	
Approved	Project manager	R. Lutzza	30-11-2011	
Approved	Coordinator Supervisor	C. Ghimbieli	30-11-2011	
Verified	Expert Case	F. Amadio	23-11-2011	
Checked	Key Expert			

Reabilitarea liniei de cablu ferat Bișniț - Simleu, parte componentă a condițiilor IV Pan European, pentru circulația trenurilor cu viteză maximă de 160 km/h.
Rehabilitation of the railway line Bișniț - Simleu, component Part of the IV Pan-European Corridor, for the train circulation with maximum speed of 160 km/h.
Section: Bișniț - Simleu

Proiect/Project: 2042K01/07/2010
Faza / Phase: P-11h, /11D.

Denumire desen / Drawing Title: GSM-R cablu n power supply si ngr e line de aggram
DI agrama monofli ar de alimentare shel ter GSM-R

Codificare / Codification System: Schem System LOT /LOT

EA511 011 C 00 0X SE 00 1 4 004 0

Nota: Pentru tunelurile Drmens si Homorod va fi furnizata sursa de energie direct prin tunelul de siguranta
Note: For Drmens and Homorod tunnels will be provided a power supply directly by safety tunnel.