

Se interzice copierea, difuzarea, imprimarea sau utilizarea in alte scopuri, fara permisiunea AREX LIDER COMPANY ca proprietar al desenului.
This drawing is forbidden to be copied, lent or used in other purposes than those previously approved by AREX LIDER COMPANY as its owner.

In cazul in care temperatura in timpul lucrului este scaduta, se vor folosi cimenturile cu rezistenta initiala mare, R si aditivi acceleratori, iar in cazul temperaturii pe timp cald, cimenturile cu rezistenta initiala uzuala, N si aditivi intarzierii (conf. NE 012/2-2010 si tabelul 2 din SR EN 197-1:2002).
When the temperature during the casting is low, cements with high initial resistance, R and accelerating additives shall be used and when it is cold during warm weather, cements with common initial resistance, N and delaying additives shall be used (according to the norm NE 012/2-2010 and table 2 for the SR EN197-1:2002).

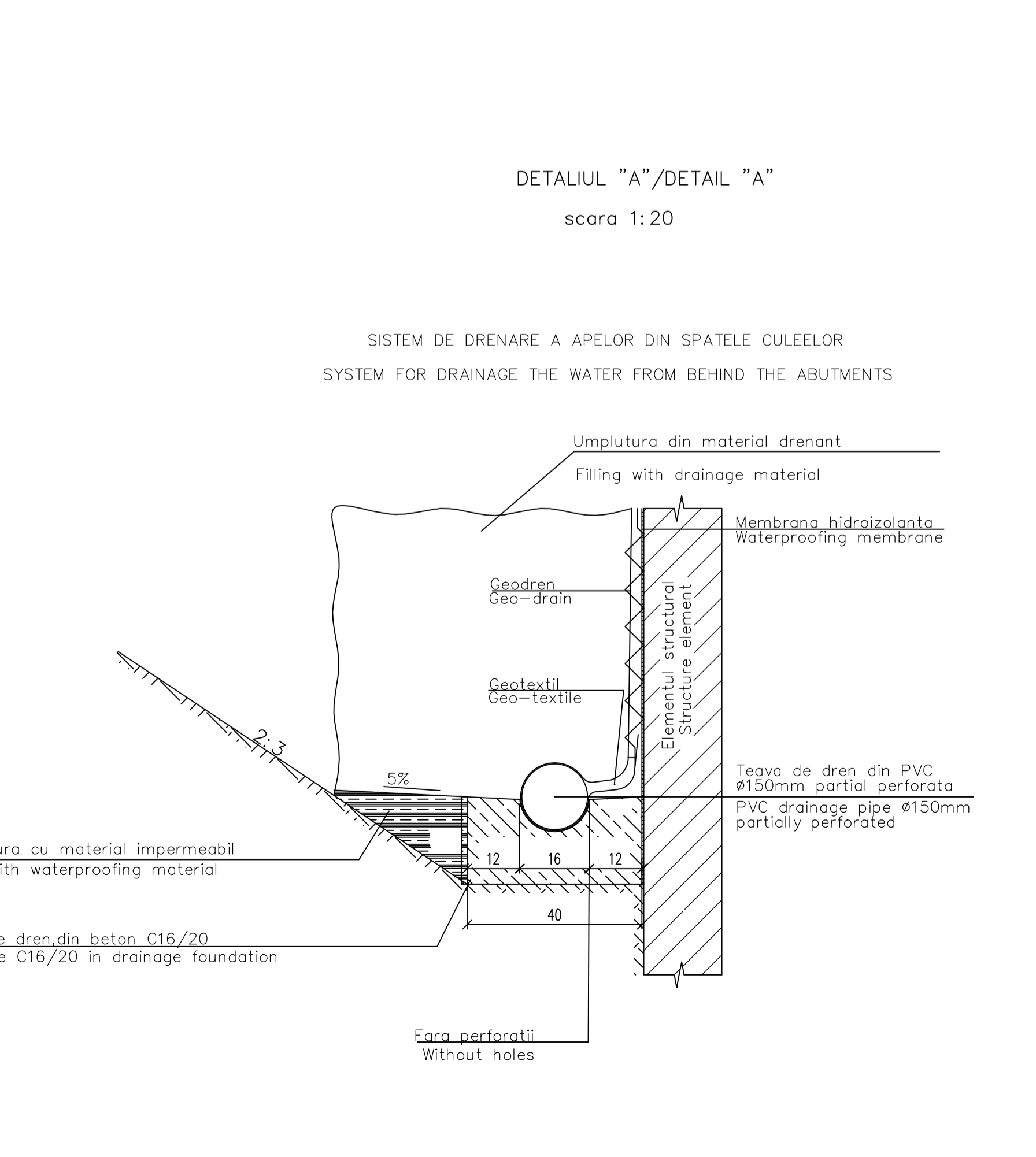
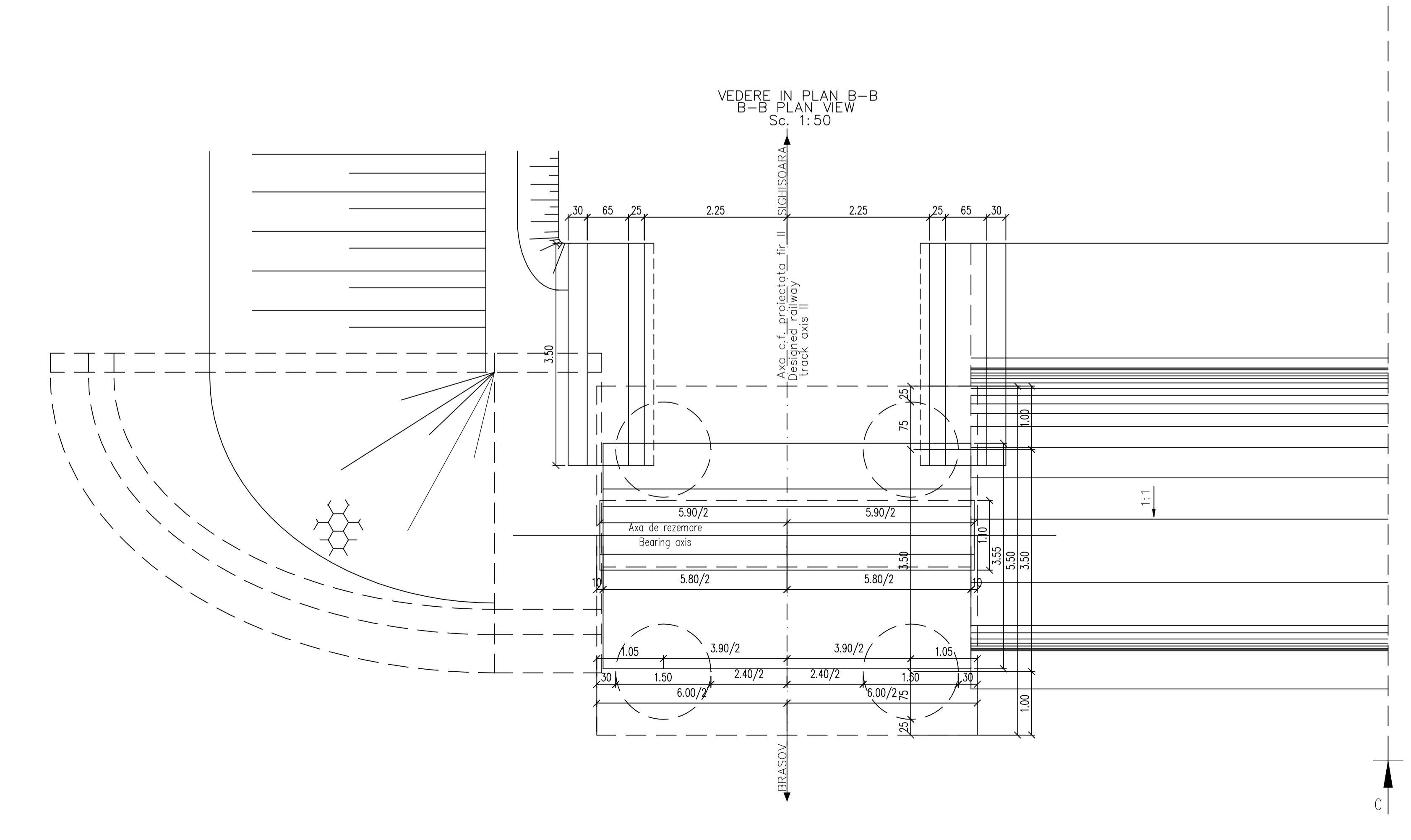
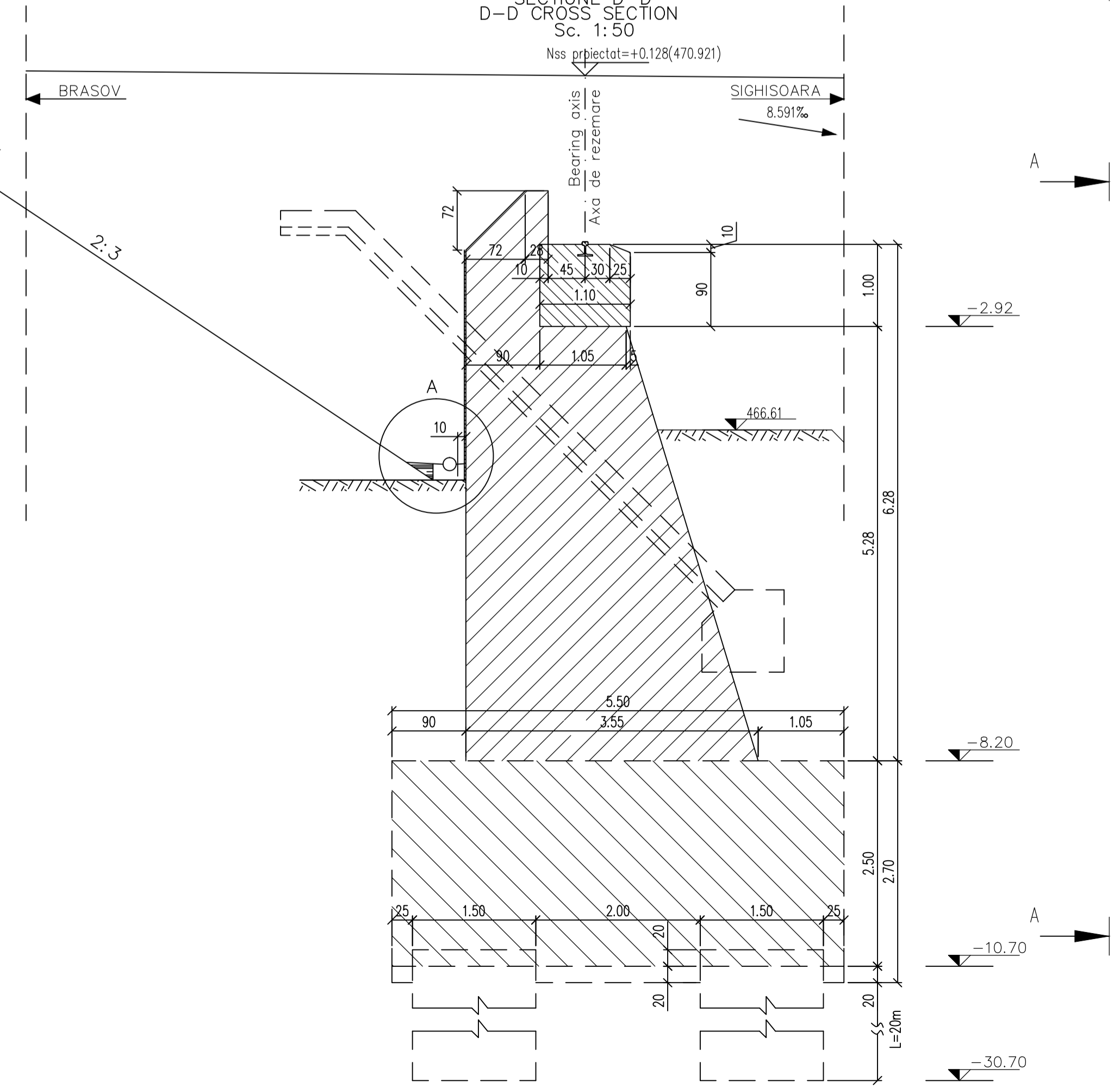
ATENȚIE / ATTENTION
Aprovizionarea aparatelor de rezem se va face inaintea executarii cuzinetilor si a banchetelor acestora. In cazul in care inaltimea aparatelor de rezem aprovizionate difera fata de cea considerata in proiect se vor modifica inaltimele pe rezem corespunzator cu noile aparate.
The bearing blocks shall be supplied before building the bearings and their seats. In case the height of the supplied bearing blocks differs from that given in the project, the heights on the seats shall be adjusted so as to comply with the new devices.

NOTA
1. Prezentul plan s-a intocmit in conformitate cu dispozitia generala.
2. Executia partilor superioare ale cuzinetilor, amplasate deasupra banchetelor cuzinetilor, se va face numai dupa procurarea aparatelor de rezem. Nivelele superioare ale cuzinetilor se vor stabili dupa procurarea aparatelor de rezem, in functie de inaltimea fiecarei tip de aparat.
3. La executie se vor respecta cu strictete prevederile din "Normativ pentru producerea betonului", indicativ NE 012/1-2007 si "Normativ pentru producerea betonului in beton, beton armat si beton precomprimat. Partea 2: Executarea lucrarilor din beton", indicativ NE 012/2-2010, iar verificarea calitatii lucrarilor si receptionarea lor se va face conform normativului C56-1985.
4. Constructia se incadreaza in categoria B de importanta. Constructii de importanta deosebita, modelul 1 for quality ensuring according to HG 766/97.
5. Podul corespunde la convoaiele de calat UIC (LM71,SW/2).
6. Corectia abisii se va realiza conform proiect aparari.

NOTE:
1. This plan has been drawn up according to the general layout.
2. The upper parts of the bearing placed over the bearing seat shall be built only after the procurement of the bearing blocks. The upper level of the bearings shall be established after the procurement of the bearing blocks depending on the height of the each bearing block type.
3. The execution will strictly comply with the provisions of "Normative for concrete production NE 012/1-2007 and "Practice code for the concrete production and works execution, reinforced and pre-stressed concrete - Part 2: The execution of concrete works". NE 012/2-2010, and the quality and the reception of the works shall be made according to Norm C 56-1985.
4. The construction is classified in the B category of importance. Special importance constructions, model 1 for quality ensuring according to HG 766/97.
5. Bridge conveys calculation corresponds to UIC (LM71,SW/2).
6. the correction of the river bed will be made according to the consolidation project.

LEGENDA BETOANELOR/CONCRETE LIST

	Beton armat in elementele prefabricate Reinforced concrete in the prefabricated elements C35/45-CEM II/A-S 32,5-(XC4+XF3+XA2)-A/C=0,50-Dmax22-CI 0,20
	Beton simplu in fundatia elementelor prefabricate, in fundatia arilor si in fundatia putului Plain concrete in the prefabricated elements, wing foundation and pit foundation C25/30-CEM II/A-S 32,5(XF1)-A/C=0,50-Dmax32-CI 0,20
	Beton simplu de panta si in pinte Plain concrete for slope and in the corbel C 25/30-CEM II/A-S 32,5-(XF3)-A/C=0,55-Dmax16-CI 0,20



DTALIUL 'a','b'/'a','b' DETAIL scara 1:20

CLIENT / CLIENT
C.N.C.F. "C.F.R." - S.A.

CONSULTANT / CONSULTANT
AREX LIDER COMPANY

SUBCONTRACTANT / SUBCONTRACTOR
Secu Andrei Razvan

Denumire desen / Drawing Title
INTERVAL / SECTION APATA - RACOS
POD / BRIDGE Km 220+170.690 L=15,00m
PLAN COFRAJ CULEE BRASOV -POD FIR II /
BRASOV ABUTMENTS FORMWORK PLANE -TRACK II BRIDGE

Codificare / Codification System
Scara / Scale: 1:50 / 1:20 / 1:5
LOT / LOT: 01 / 01
Nr. / No: 01 / 01