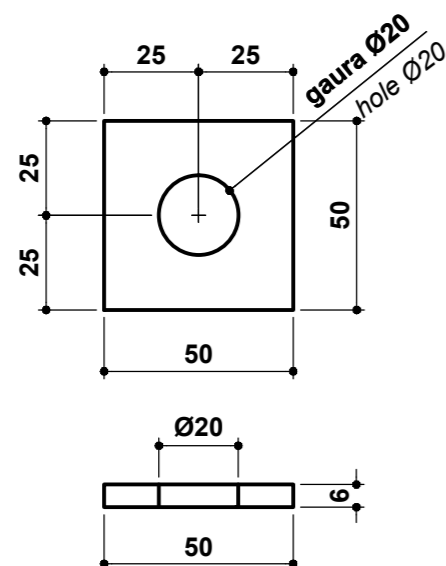
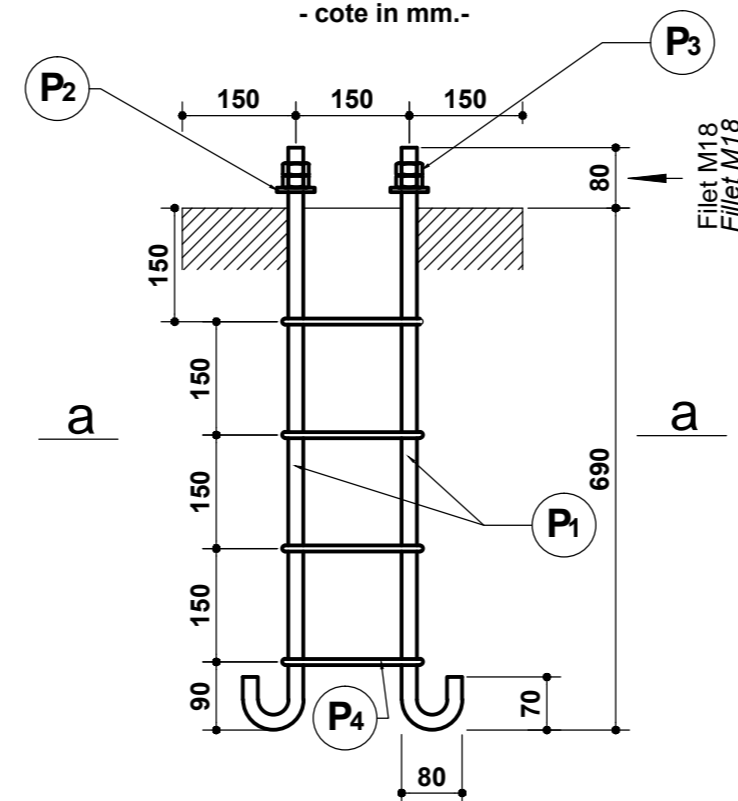


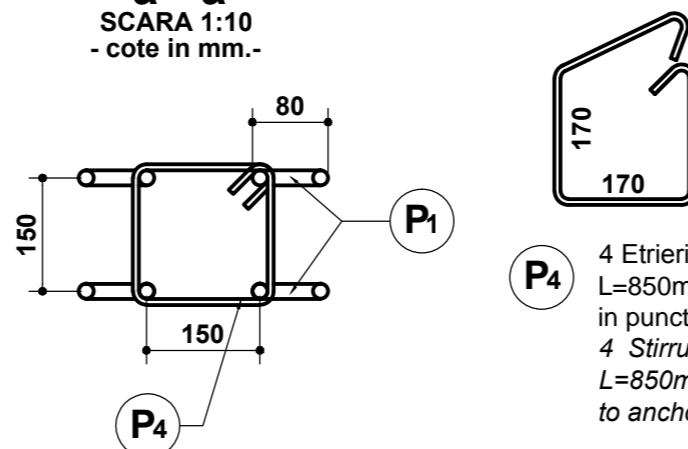
**P<sub>2</sub> SAIBA 6x50-50  
COLAR PLATE 6x50-50**  
SCARA 1:2  
- cote in mm.-



**DETALII CARCASA BULOANE  
ANCHOR CASING DETAILS**  
SCARA 1:10  
- cote in mm.-



**a - a**  
SCARA 1:10  
- cote in mm.-



**P<sub>4</sub>** 4 Etrieri  $\text{\O}8$ - OB37  
L=850mm sudati  
in puncte de buloane M18  
4 Stirrups  $\text{\O}8$ - OB37  
L=850mm point welded  
to anchor bolts M18

EXTRAS LAMINATE / ROLLED STEEL TABLE						
POZITIA/ POSITION	DENUMIREA / LABEL	DIMENSIUNE / DIMENSION	BUC / PCS.	GREUTATE / WEIGHT		
				KG/ML	KG/BUC	KG/ELEM
P1	M18	0.9	4	2	1.8	7.2
P2	6 X 50	0.05	4	2.355	0.12	0.47
P3	M18		8		0.05	0.4
P4	$\text{\Phi}8$	0.85	4	0.395	0.34	1.36
TOTAL						9.43
ELECTROZI 6%						0.57
TOTAL KG/BUC FUNDATIE						10

MATERIALE / MATERIALS :  
BETON SIMPLU/ CONCRETE :  
C12/15 - P4 - T3 - IIA - SR32.5 ,  
LAMINATE / ROLLED STEEL :  
OL37 / S235J2G3;  
OTEL BETON/ REINFORCEMENT :OB37;

NOTA: Acest plan se va corela cu planul de instalatii electrice si cu planul de dispozitie generala peroane.  
This plan will be correlated with the electrical instalations plan and the general layout platform plan.

D					
C					
B					
A					
Indice Index	Data Date	Modificare Modification/Revision	Proiectant Designer	Aprobat Consultant Approved Consultant	Aprobat CFR Approved CFR



GUVERNUL ROMANIEI  
ROMANIAN GOVERNMENT

PROIECT FINANȚAT DE UNIUNEA EUROPEANĂ  
EUROPEAN UNION FINANCED PROJECT



C.N.C.F. "C.F.R." - S.A.

CLIENT / CLIENT



CONSULTANT / CONSULTANT

Aprobat Approved	Șef proiect Project manager	R. Liuzza	Data Date	Semnătură Signature
Aprobat Approved	Coordonator Secțiune 1 Section 1 Coordinator	C. Gambelli	12.2011	
Verificat Checked	Verificator Verifier	Giuseppe Fioravanti	12.2011	

SUBCONTRACTANT / SUBCONTRACTOR

Aprobat Approved	Responsabil Subconsultant Subconsultant Responsible	A. Stanciu - Dinulescu	Data Date	Semnătură Signature
Intocmit Elaborated	Proiectant Designer	Georgiana Georgescu	12.2011	

Reabilitarea liniei de cale ferata Braşov - Simeria, parte componentă a coridorului IV Pan European, pentru circulația trenurilor cu viteză maximă de 160 km/h,  
Tronsonul : Braşov - Sighişoara  
Rehabilitation of the railway line Braşov - Simeria, component Part of the IV Pan-European Corridor, for the trains circulation with maximum speed of 160 km/h,  
Section : Braşov - Sighişoara

Project/Project  
2004/RO/16/P/PA/003

Faza / Phase:  
D.E. / E.D.

Denumire desen / Drawing Title :

FUNDATIE LAMPADAR PERON  
PLATFORM  
LANTERN FBEARING

Codificare / Codification System

Scara / Scale  
1 : 20

LOT / LOT

Nr. / No  
01 / 01

E A 5 1 0 1 E 0 0 B C C C 0 0 0 2 0 0 3 0