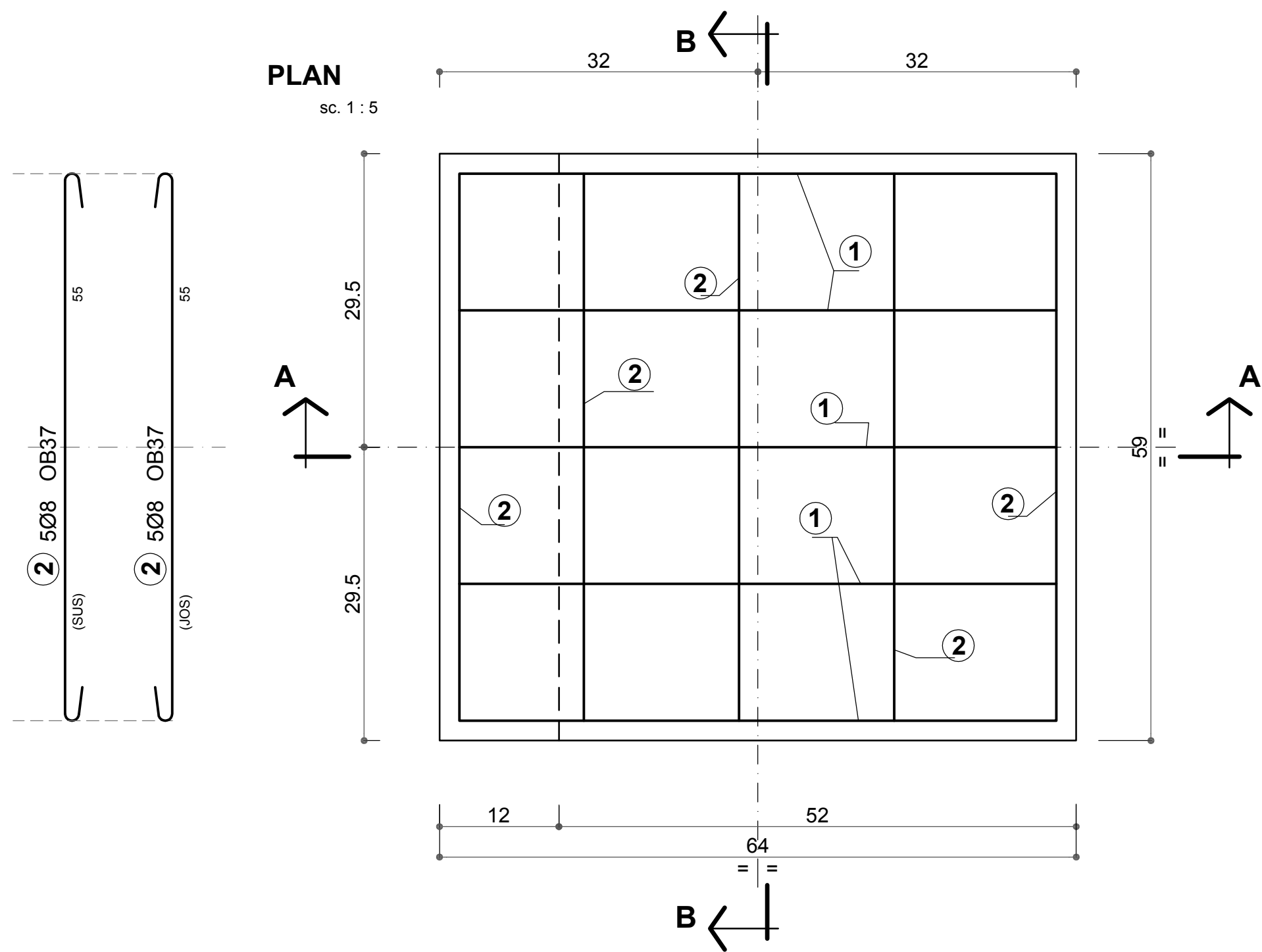


PLACA tip 1 CONTRASINA de BETON ARMAT - 64x59x14 cm
PRECAST PLATE type 1 REINFORCED CONCRETE COUNTER-RAIL - 64x59x14 cm



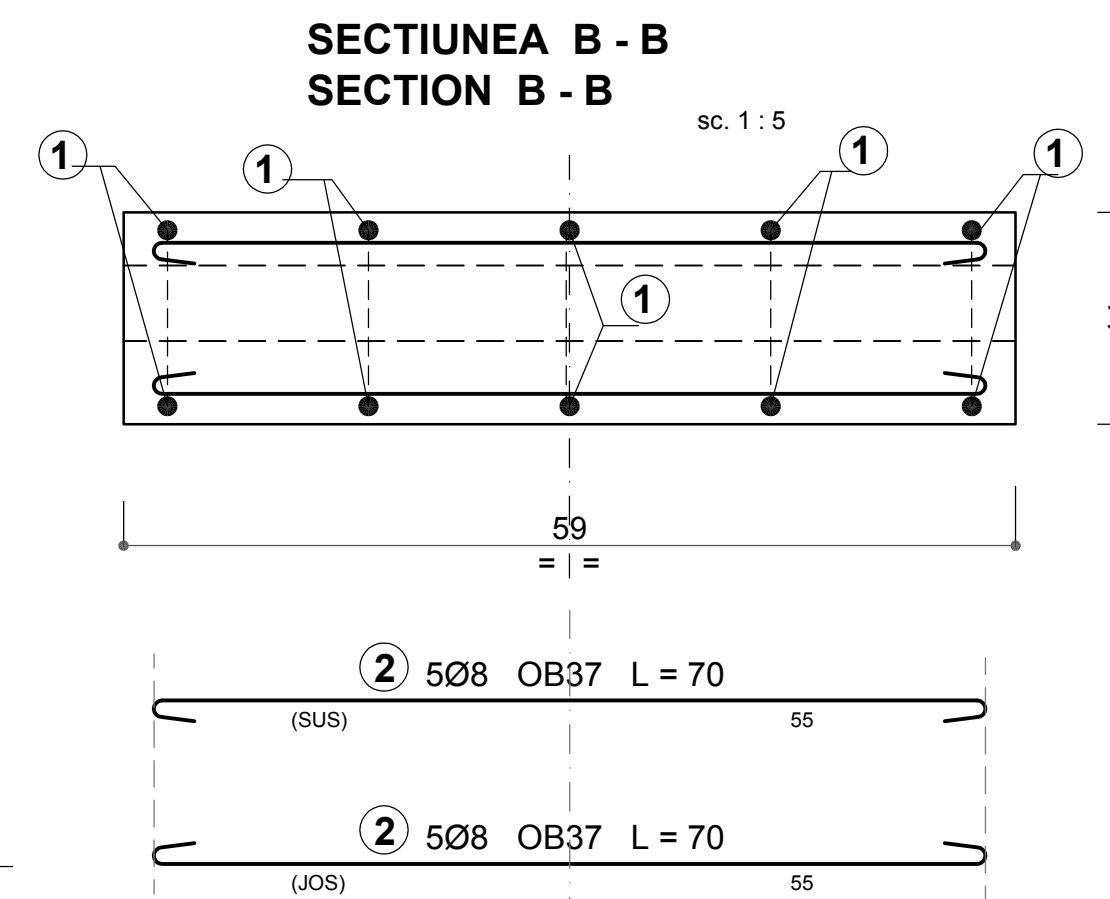
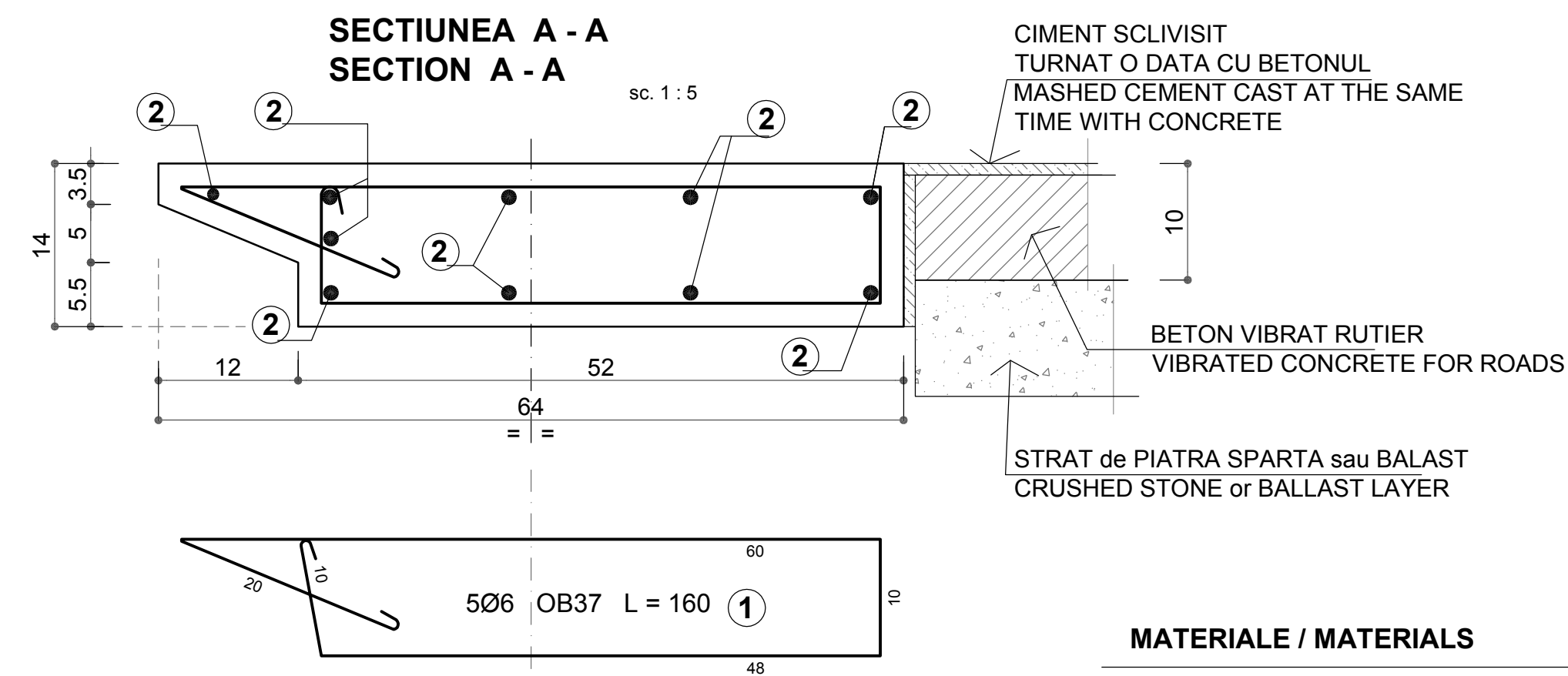
CARACTERISTICI PREFABRICATE
PREFABRICATED CHARACTERISTICS

TIP PREFABRICAT PREFAB.ELEM.TYPE	VOLUM BETON Bc22.5 CONCRETE VOL. Bc22.5 - m ³ -	MASA ELEMENT ELEMENT MASS	COFRAJ SHUTTERING - m ² -	MARCA OTEL STEEL MARK - kg.-	TOTAL ARMATURA REINFORCEMENT - TOTAL
1	0.052 m ³	130 kg	0.72	OB37	5.0
TOTAL 50 buc. TOTAL 50 pcs.	2.60 m³	6.50 t	36.0	250.0	250.0

TABLOU ARMARE
REINFORCEMENT TABLE

ELEM. ELEMENT	MARCA MARK	Ø.	NR. BUC. No.of PCS.	LUNG. BARA BAR LENGHT - m -	LUNGIMI / DIAM. LENGHTS / Ø.		
					Ø 6	Ø 8	Ø 10
PLACA PREF.tip 1 CONTRASINA B.A. -1 buc.-	1	6	5	1.60	8.0	7.0	0.0
	2	8	10	0.70		7.0	
LUNGIME / DIAMETRE					8.0	7.0	0.0
GREUTATE / m. / DIAMETRE					0.222	0.395	0.617
GREUTATE / DIAMETRE					1.8	2.8	0.0
TOTAL (rot.) kg. :					2.0	3.0	
TOTAL GENERAL (OB37) kg. :					5.0		

* BARELE DE ARMATURA SUNT CALCULATE PENTRU O SINGURA PLACA PREFABRICATA
 THE REINFORCING BARS ARE CALCULATED FOR A SINGLE ONE PRECAST PLATE.



MATERIALE / MATERIALS

- BETON VIBRAT cu agregat din piatra sparta
 VIBRATED CONCRETE with crushed stone aggregate
C18/22.5 (Bc22.5) CEM II/A-S 32.5N ; sort 0-16; A/C : 0.5; T3
- ARMATURA / REINFORCEMENT : **OB37**
- ACOPERIRE / COVERING : **4 cm**

NOTA

- CONTRASINELE DE BETON ARMAT SE ASEAZA PE TRAVERSE, SPATIILE DINTRE TRAVERSE SE NIVELEAZA PE 10 cm ADANCIME DE LA N.S.T. CU BALAST
- TRAVERSELE POT FI DE LEMN SAU DE BETON ARMAT
- PLACILE TIP 1 POT AVEA 14 cm GROSIME SI, IN ACEST CAZ, SE INGROASA TRAVERSA CU 2 cm

NOTE

- THE REINFORCED CONCRETE GUARD RAIL WILL BE PLACED ON SLEEPERS AND THE SLEEPERS WILL BE LEVELLED WITH BALLAST FOR 10 cm DEPTH FROM S.U.L.
- THE SLEEPERS CAN BE MADE OF WOOD OR REINFORCED CONCRETE
- THE PLATES TYPE 1 CAN BE 14 cm THICK AND IN THIS CASE THE SLEEPERS WILL BE 2 cm THICKER.

Indice Index	Data Date	Modificare Modification/Revision	Proiectant Designer	Aprobat Consultant Approved Consultant	Aprobat CFR Approved CFR
D					
C					
B					
A					



C.N.C.F. "C.F.R." - S.A.

CLIENT / CLIENT



CONSULTANT / CONSULTANT

Aprobat Approved	Şef proiect Project manager	R. Liuzza	Data Date	Semnătură Signature
Aprobat Approved	Coordonator Sectiune 1 Section 1 Coordinator	C. Gambelli	12.2011	<i>[Signature]</i>
Verificat Checked	Verificator Verifier	Giuseppe Fioravanti	12.2011	<i>[Signature]</i>

SUBCONTRACTANT / SUBCONTRACTOR

Aprobat Approved	Responsabil Subconsultant Subconsultant Responsible	A.Stanciu - Dinulescu	Data Date	Semnătură Signature
Întocmit Elaborated	Proiectant Designer	Georgescu Toma Cristian	12.2011	<i>[Signature]</i>

Reabilitarea liniei de cale ferata Braşov - Simeria, parte componentă a coridorului IV Pan European, pentru circulaţia trenurilor cu viteză maximă de 160 km/h,
Tronsonul : Braşov - Sighişoara
 Rehabilitation of the railway line Braşov - Simeria, component Part of the IV Pan-European Corridor, for the trains circulation with maximum speed of 160 km/h,
Section : Braşov - Sighişoara

Project/Project
 2004/RO/16/P/PA/003
 Faza / Phase:
 D.E. / E.D.

Denumire desen / Drawing Title :
 SUBSTATIE TRACTIUNE - CONSTRUCTII EXTERIOARE - TRACTION SUBSTATION - OUTDOOR CONSTRUCTION

PLACA CONTRASINA PREFABRICATA DE BETON ARMAT tip 1 - 64x59x14 cm
PRECAST COUNTER-RAIL REINFORCED CONCRETE PLATE type 1 - 64x59x14 cm

Codificare / Codification System	Scara / Scale	LOT / LOT	Nr. / No
	1:5		01 / 01

E A 5 1 0 1 E 0 0 B Y A C 0 0 0 4 0 0 6 0