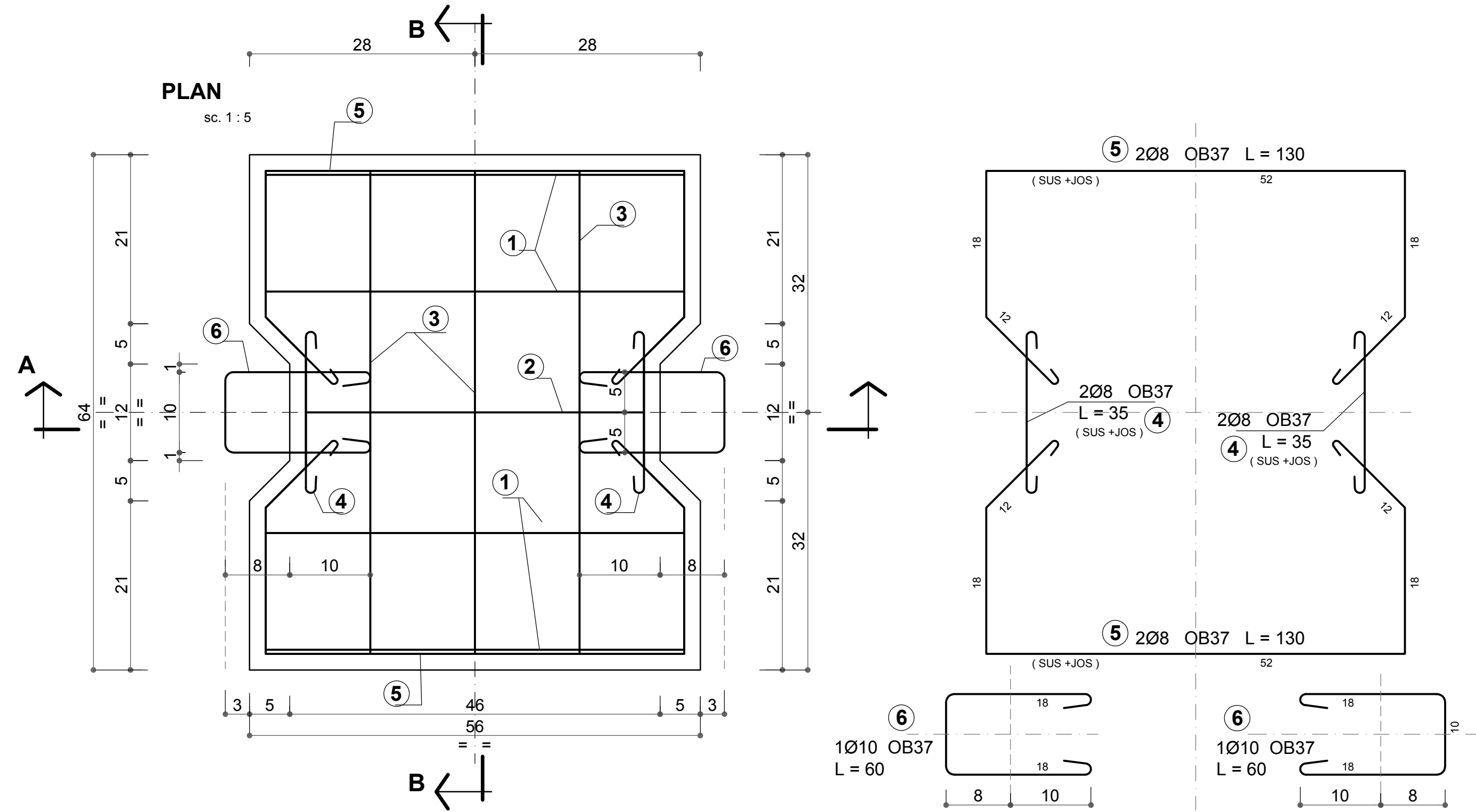


PLACA tip 5 CONTRASINA de BETON ARMAT - 64x56x14 cm
PRECAST PLATE type 5 REINFORCED CONCRETE COUNTER-RAIL - 64x56x14 cm

- 2 buc. / 2 pcs.-



CARACTERISTICI PREFABRICATE
PREFABRICATED CHARACTERISTICS

TIP PREFABRICAT PREFAB.ELEM.TYPE	VOLUM BETON Bc22.5 CONCRETE VOL. Bc22.5 - m ³ -	MASA ELEMENT ELEMENT MASS	COFRAJ SHUTTERING - m ² -	MARCA OTEL STEEL MARK - kg.- OB37	TOTAL ARMATURA REINFORCEMENT - TOTAL
5	0.048 m³	120 kg	0.59	7.0	7.0
TOTAL 2 buc. TOTAL 2 pcs.	0.096 m³	500 kg	1.18	14.0	14.0

MATERIALE / MATERIALS

- BETON VIBRAT cu agregat din piatra sparta
VIBRATED CONCRETE with crushed stone aggregate
C18/22.5 (Bc22.5) CEM II/A-S 32.5N ; sort 0-16; A/C : 0.65; T3
- ARMATURA / REINFORCEMENT : **OB37**
- ACOPERIRE / COVERING : **4 cm**

Indice Index	Data Date	Modificare Modification/Revision	Proiectant Designer	Aprobat Consultant Approved Consultant	Aprobat CFR Approved CFR



CONSULTANT / CONSULTANT			Data Date	Semnatura Signature
Aprobat Approved	Şef proiect Project manager	R. Liuzza	12.2011	<i>[Signature]</i>
Aprobat Approved	Coordonator Sectiune 1 Section 1 Coordinator	C. Gambelli	12.2011	<i>[Signature]</i>
Verificat Checked	Verificator Verifier	Giuseppe Fioravanti	12.2011	<i>[Signature]</i>

SUBCONTRACTANT / SUBCONTRACTOR			Data Date	Semnatura Signature
Aprobat Approved	Responsabil Subconsultant Subconsultant Responsible	A.Stanciu - Dinulescu	12.2011	<i>[Signature]</i>
Intocmit Elaborated	Proiectant Designer	Georgescu Toma Cristian	12.2011	<i>[Signature]</i>

Reabilitarea liniei de cale ferata Braşov - Simeria, parte componentă a coridorului IV Pan European, pentru circulaţia trenurilor cu viteză maximă de 160 km/h,
Tronsonul : Braşov - Sighişoara
 Rehabilitation of the railway line Braşov - Simeria, component Part of the IV Pan-European Corridor, for the trains circulation with maximum speed of 160 km/h,
Section : Braşov - Sighişoara

Denumire desen / Drawing Title :
 SUBSTATIE TRACTIUNE - CONSTRUCTII EXTERIOARE - TRACTION SUBSTATION - OUTDOOR CONSTRUCTION

PLACA CONTRASINA PREFABRICATA DE BETON ARMAT tip 5 - 64x56x14 cm
PRECAST COUNTER-RAIL REINFORCED CONCRETE PLATE type 5 - 64x56x14 cm

Codificare / Codification System	Scara / Scale 1:5	LOT / LOT	Nr. / No 01 / 01
----------------------------------	----------------------	-----------	---------------------

E A 5 1 0 1 E 0 0 B Y A C 0 0 0 4 0 1 0 0

TABLOU ARMARE
REINFORCEMENT TABLE

ELEM. ELEMENT	MARCA MARK	Ø.	NR. BUC. No. of PCS.	LUNG. BARA BAR LENGHT m.	LUNGIMI / DIAM. LENGHTS / Ø.		
					OB37		
					Ø 6	Ø 8	Ø 10
PLACA PREF. tip 5 CONTRASINA B.A. -1	1	6	4	1.35	5.4		
	2	6	1	1.15	1.2		
	3	8	6	0.75		4.5	
	4	8	4	0.35		1.4	
	5	8	4	1.30		5.2	
	6	10	2	0.60			1.2
LUNGIME / DIAMETRE					6.6	11.1	1.2
GREUTATE / m. / DIAMETRE					0.222	0.395	0.617
GREUTATE / DIAMETRE					1.5	4.4	0.7
TOTAL (rot.) kg. :					1.5	4.5	0.9
TOTAL GENERAL (OB37) kg. :					7.0		

* BARELE DE ARMATURA SUNT CALCULATE PENTRU O SINGURA PLACA PREFABRICATA
 THE REINFORCING BARS ARE CALCULATED FOR A SINGLE ONE PRECAST PLATE.