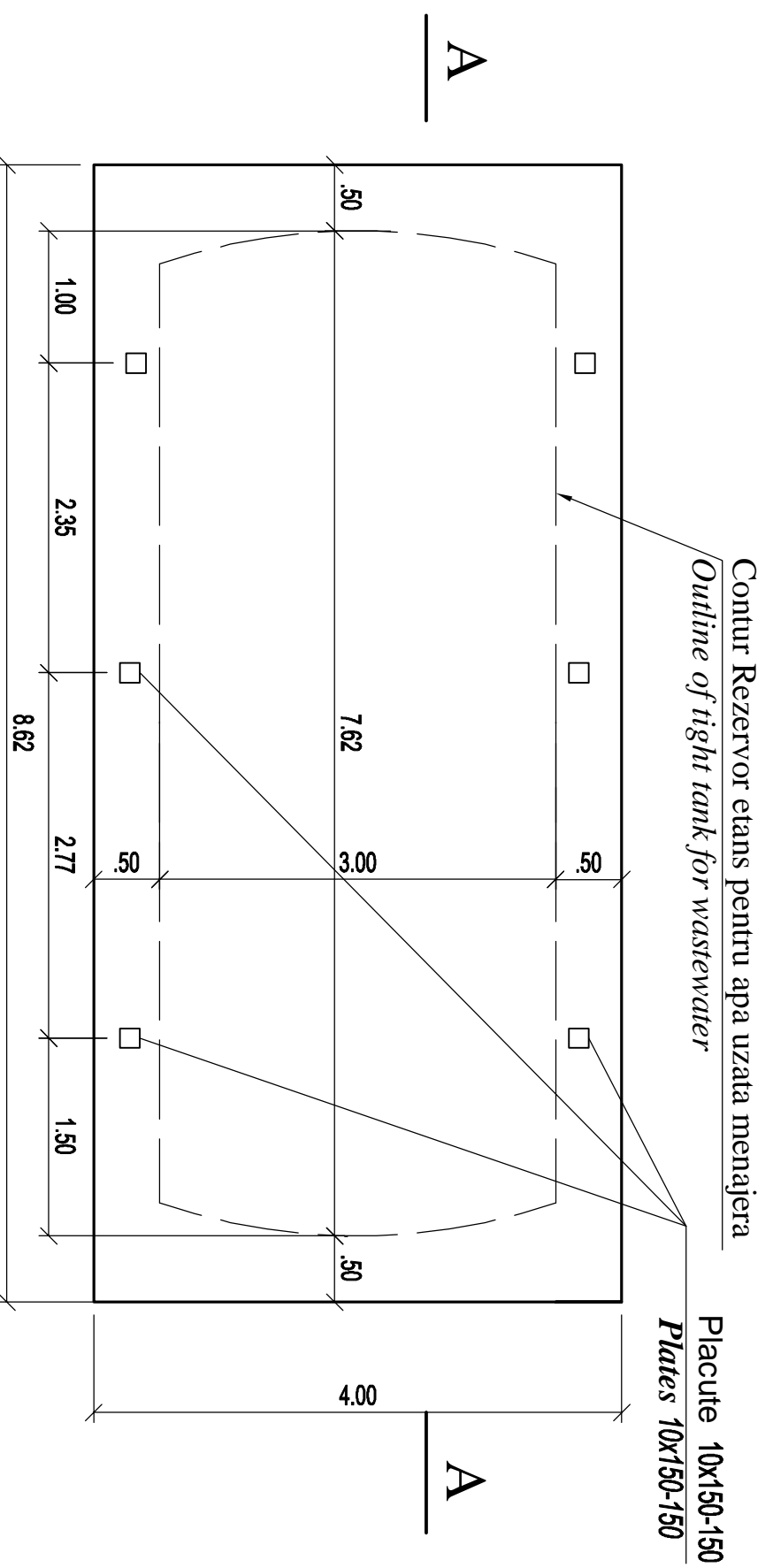


## Plan Platforma - Platform Plan

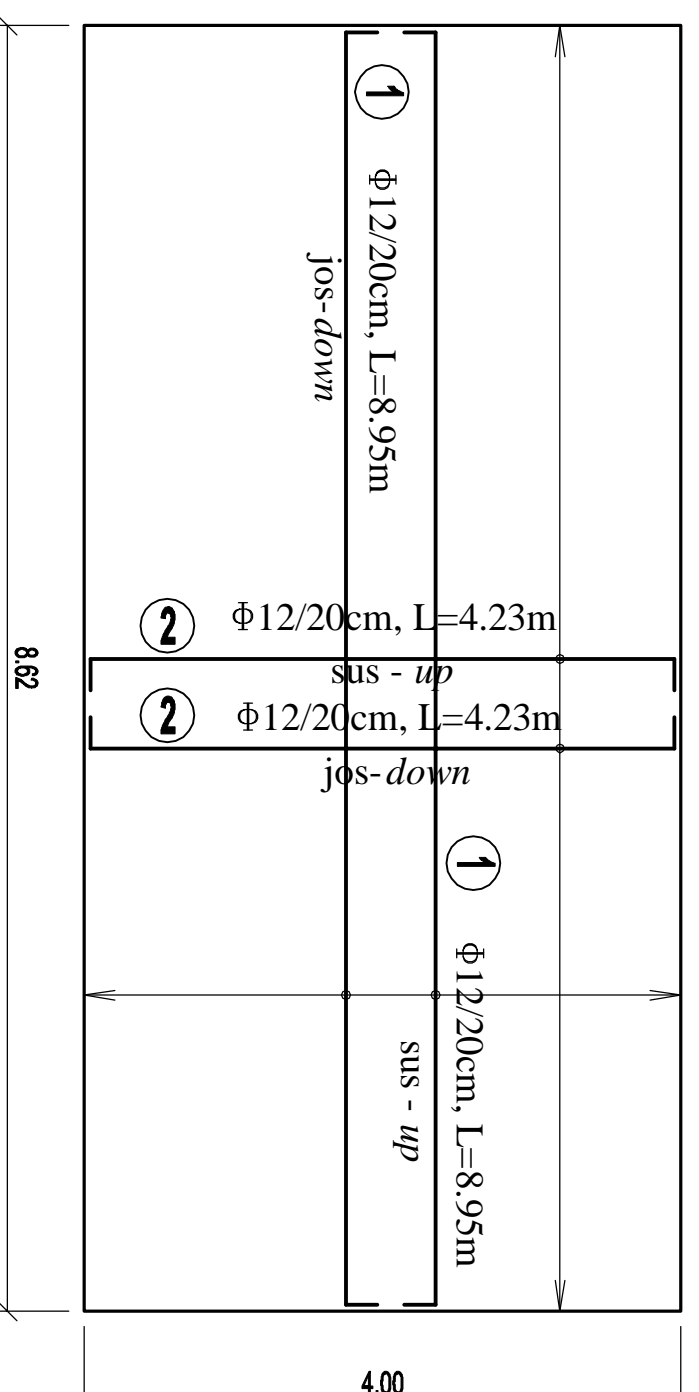
### Sc. 1:50



## Plan armare platforma

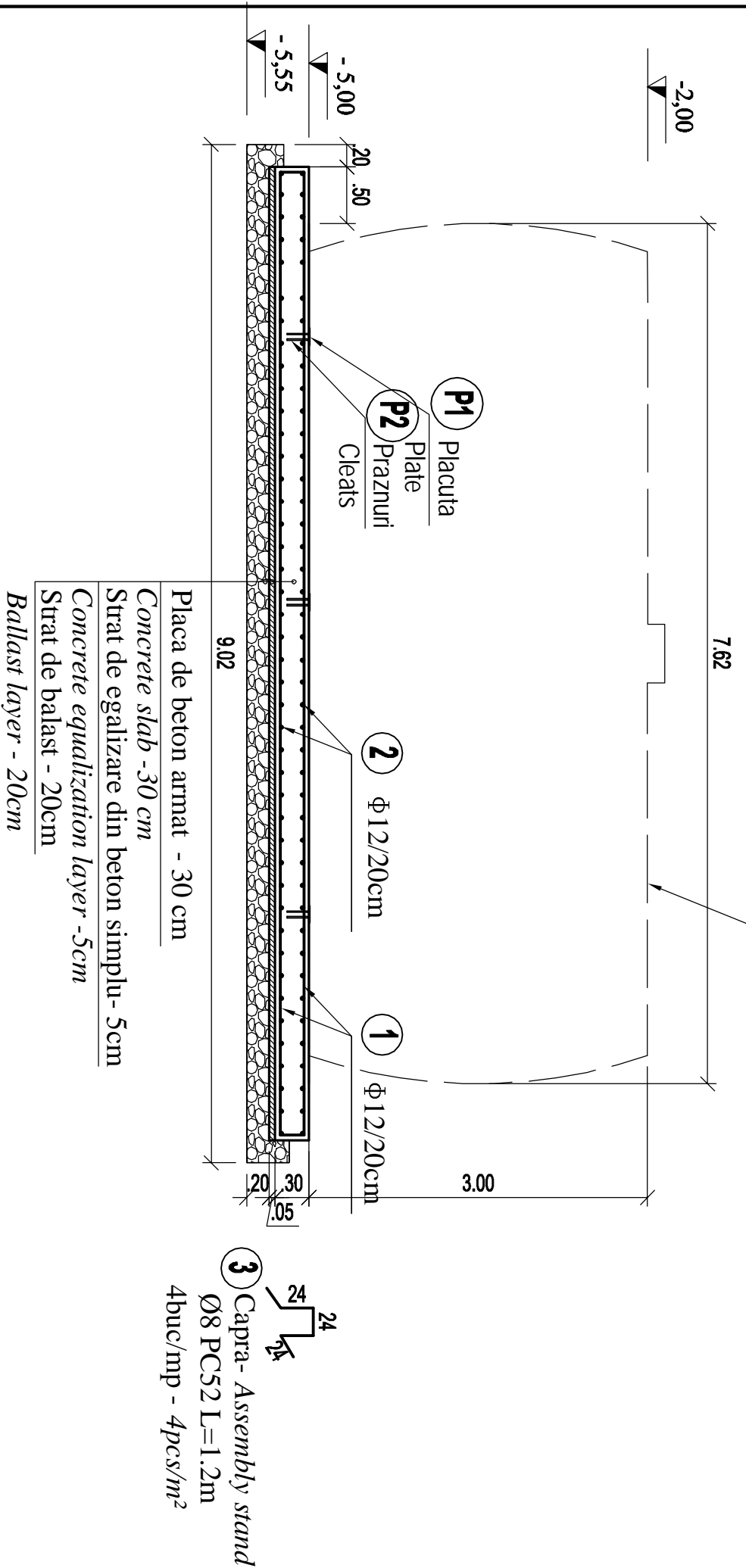
### Platform reinforcing Plan

### Sc. 1:50



## Sectiunea A - A - A Section

### Sc. 1:50



## EXTRAS LAMINATE - BILL OF ROLLED SECTION

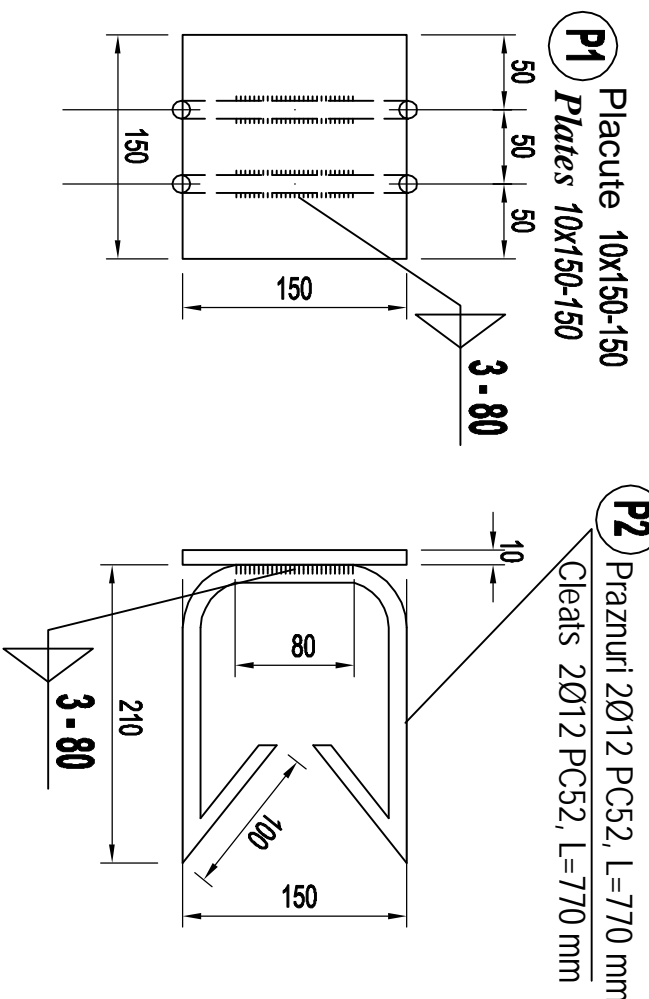
### CONECTII METALICE INGLOBATE IN BETON - METALLIC ELEMENTS IN CONCRETE

EL. BUCI	POZITIA	SECTIUNEA (mm)	LUNGIMEA (mm)	CALITATE OTEL	NR. BUCI	Kg/m	Kg/buc	Kg/poz
PLACUTA INGLOBATA IN BETON	P1	101 x 150	150	S235JDG3	1	11.78	1.77	1.77
	P2	Ø12	770	S355JDG3	2	0.89	0.68	1.37
TOTAL 1							(Kg)	3.13
ELECTROZI ~ 3%							(Kg)	0.09
TOTAL 2- nr. 1BUC.							(Kg)	3.23
TOTAL GENERAL : 6 BUC.							(Kg)	19.4

## Placute inglobate in platformele de b.a.

### Plates embedded in concrete platforms

### Sc. 1:10



## EXTRAS ARMATURA PLATFORMA - BILL OF REINFORCEMENT FOR CONCRETE PLATFORM

Marca	Φ	buc	lung (m)	Φ8	Φ12
1	12	42	8.95		375.90
2	12	88	4.33		381.04
3	8	139	1.20	186.90	756.94
		Total nr/Φ		186.90	756.94
		Kg/Φ		0.395	0.898
		TOTAL Kg		65.89	672.16

Cotarea armarii in "cm" :  
Cotarea confectionii metalice in "mm"  
Reinforcement dimensions in "cm" :  
Dimensions of metallic elements in "mm"

± 0.00 = NSS proiectat / Superior level of the railway track

**MATERIALE**  
BETON SIMPLU: C 6/7.5  
BETON ARMAT : C12/15  
OTEL BETON : PC52  
LAMINATE : S235JDG3 (OL37.2n)  
Acoperirea cu beton a armaturilor de rezistență : c = 4.5 cm.  
**MATERIALS**  
CONCRETE : C 6/7.5  
REINFORCED CONCRETE : C12/15  
REINFORCEMENT : PC52  
ROLLED STEEL : S235JDG3 (OL37.2n)  
ROLLED STEEL : S235JDG3 (OL37.2n)  
Concrete covering of the main reinforcing bars : c = 4.5 cm.

Index	Data	Modificare	Proiectant	Proiectant	Proiectant	Proiectant
A						
B						
C						
D						

GUVERNUL ROMANIEI  
ROMANIAN GOVERNMENT  
PROIECT FINANȚAT DE UNIUNEA EUROPEANĂ  
EUROPEAN UNION FINANCED PROJECT

C.N.C.F. "C.F.R." - S.A.



CLIENT / CLIENT

**TRASSER**  
Scot Wilson  
OBERMEYER  
PLANNEN + BERATEN GmbH  
TECNIC  
Consulting Engineers

### CONSULTANT / CONSULTANT

Approved	Project manager	R. Lutzza	Date	12.2011	Semnatura
Approved	Coordonator Sectiune 1	C. Gambelli	Date	12.2011	
Approved	Section 1 Coordinator	Giuseppe Fioravanti	Date	12.2011	
Checked	Verifier				

### SUBCONTRACTANT / SUBCONTRACTOR

Approved	Responsabil Subcontractant	A. Stancu - Dinulescu	Date	12.2011	Semnatura
Approved	Subcontractant Responsible	Andreea Stancu <td>Date <td>12.2011 <td></td> </td></td>	Date <td>12.2011 <td></td> </td>	12.2011 <td></td>	
Elaborat	Designer				

Reabilitarea liniei de cale ferata Brasov - Simieria, parte componentă a coridorului IV Pan European, pentru circulația trenurilor cu viteză maximă de 160 km/h.  
Tronsoanel : Brasov - Sighisoara  
Rehabilitation of the railway line Brasov - Simieria, component Part of the IV Pan-European Corridor, for the trains circulation with maximum speed of 160 km/h.  
Section : Brasov - Sighisoara

Denumire desen / Drawing Title :

PLATFORMA BETON PENTRU SUSTINERE REZERVOR APA UZATA MENAJERA  
CONCRETE PLATFORM SUPPORT FOR DOMESTIC SEWAGE TANK

Coeficientare / Codification System

E	A	S	1	0	1	E	0	0	B	B	C	C	0	0	0	X	0	0	6	1
---	---	---	---	---	---	---	---	---	---	---	---	---	---	---	---	---	---	---	---	---