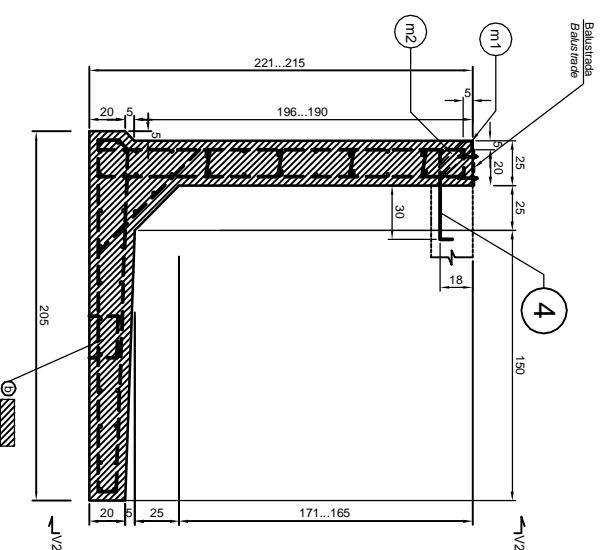
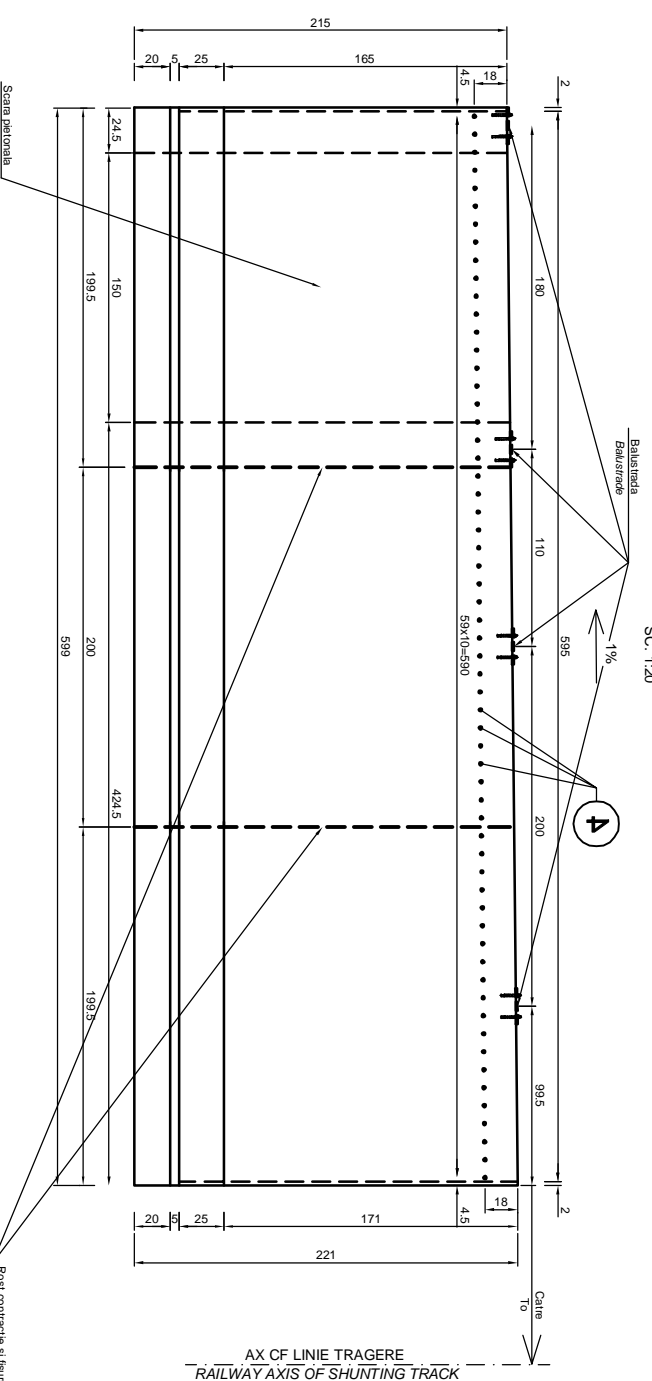


SECTIUNEA 3-3 DIN BETON ARMAT MONOLIT - COFRAJ
MONOLITH REINFORCED CONCRETE SECTION 3-3 - ENCASUREMENT

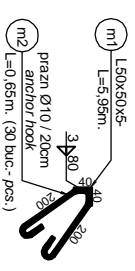
SC. 1:20



VEDERE V2 - V2
V2 - V2 VIEW
SC. 1:20



SC. 1:10 cotel dimensions in mm



m1 - L50x50x5 - 1buc. x 5.95m. x 3.77kg/m. = 23.10kg
m2 - Ø10 OB37 - 30buc. x 0.65m. = 19.50m. x 0.617kg/m. = 12.4kg.
OTEL/STEEL : S235J2G3 (Q137) TOTAL = 35.5kg.

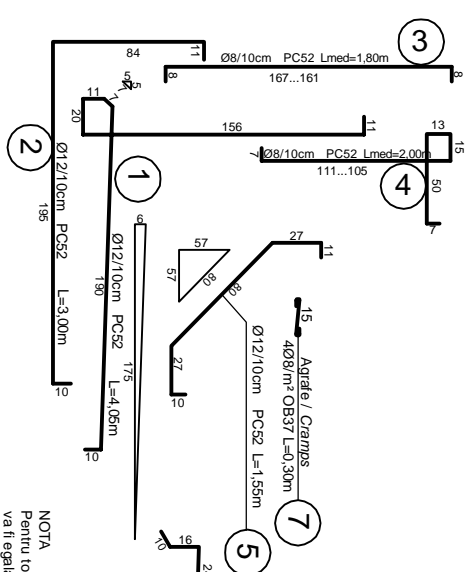
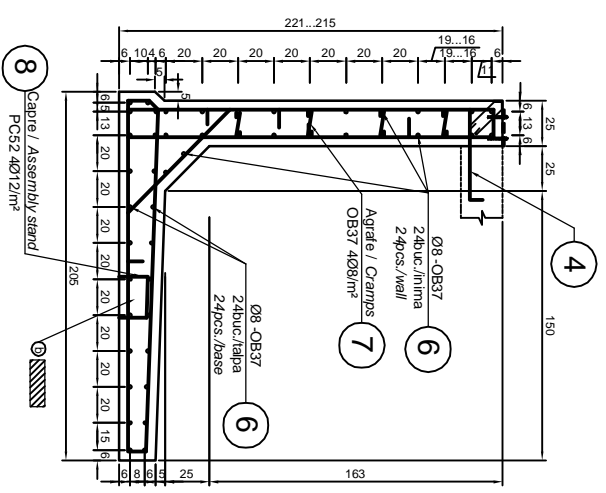
EXTRAS ARMATURA BILL OF REINFORCEMENT

Marca	Ø	Lungimea Bar length	Nr. Baze No. pos.	Lungimi pe diametre / Lengths on diameters	Ø8	Ø8	Ø12
1	12	4.05	60				243.00
2	12	3.00	60				180.00
3	8	1.80	60			108.00	
4	8	2.00	60			120.00	
5	12	1.55	60				93.00
6	8	5.90	48			283.20	
7	8	0.30	48			14.40	
8	12	0.75	48				36.00
Lungimi totale pe Ø				297.60		228.00	552.00
Greutate pe ml.				0.385		0.395	0.888
Greutate totale pe Ø				117.60		90.10	490.20
GREUTATE TOTALA Kg						580.30	

- ⊗ BETON ARMAT vibrat : C 25/30 -P4-T3-1/A 32.5/0...16
- ▨ OTEL BETON : OB37-PC52
- ▨ LAMINATE : S235J2G3 (Q137)
- ⊗ REINFORCED CONCRETE, vibrat : C 25/30 -P4-T3-1/A 32.5/0...16
- ⊗ REINFORCEMENT : OB37-PC52
- ▨ ROLLED STEEL : S235J2G3 (Q137)

SECTIUNEA 3-3 DIN BETON ARMAT MONOLIT - ARMARE
MONOLITH REINFORCED CONCRETE SECTION 3-3 - REINFORCING

SC. 1:20



NOTA
Pentru toate armaturile, raza donului de indoire
va fi egala cu 3d
NOTE
For all reinforcements, the radius of mandrel for
bending is equal to 3d

D					
C					
B					
A					
TRACIA	Data	Modificarea/Revisiunea	Dezignat	Approbat Consultant	Approbat CRF
<p>GUVERNUL ROMANIEI PROIECT FINANȚAT DE UNIUNEA EUROPEANĂ A ROMANIAN GOVERNMENT EUROPEAN UNION FINANCED PROJECT</p>					

CLIENT / CLIENT

C.N.C.F. "CFR" - S.A.

CONSULTANT / CONSULTANT

OBBERMEYER
PLANET + SERVICE GROUP
TECNIC
Consulting Engineers

Approbat	Self project	Date	Signature
Approbat	Project manager	12.2011	
Verificat	Coordinator Site/Section 1	12.2011	
Verificat	Site/Section manager	12.2011	
Verificat	Verifier	12.2011	

Approbat	Responsabil Subcontractant	Date	Signature
Verificat	Director	12.2011	
Verificat	Subcontractant Representative	12.2011	

REABILITAREA INELULUI DE CALA FARA BRAGOV - SIMERIA, PARTEA COMPONENTA 3 A CONDUCTIVULUI
11 / Part European, proiectat de la unuobiu
Tonsorial : Brasov - Sighisora
Rehabilitation of the railway line Brasov - Simeria, component Part of the 11 / Part-European
Conductor, for the train circulation with maximum speed of 160 km/h.
Section : Brasov - Sighisora

Denumire desen / Drawing Title :
ELEMENT DE CAPAT MONOLIT RAMPA - COFRAJ SI ARMARE - "SUSV"
CAST IN PLACE END PIECE ELEMENT FOR LOADING LEDGE
- FORMWORK AND REINFORCEMENT DETAILS - "UP"

Codificare / Codification System

Scale / Scale 1:20

UNITURE

Nr. / No 01/15

12A2(630X94)=0.37m²