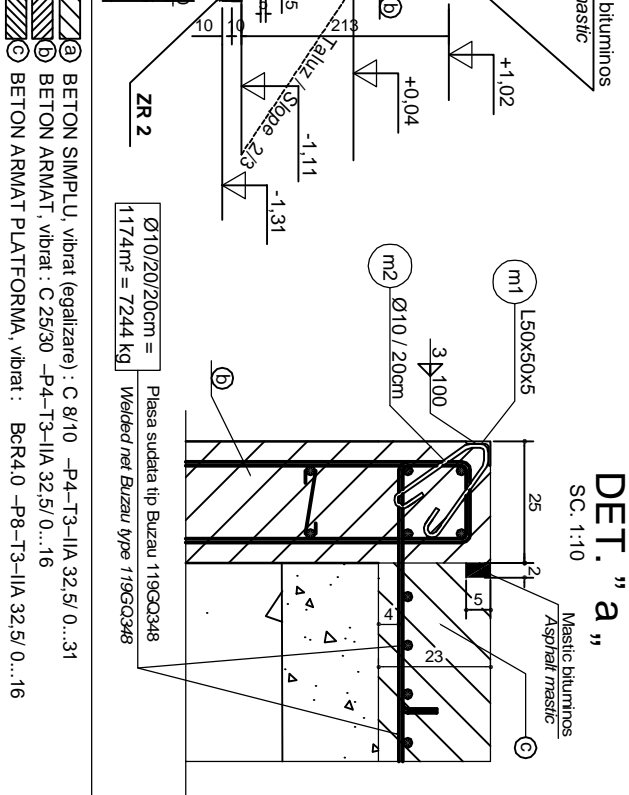
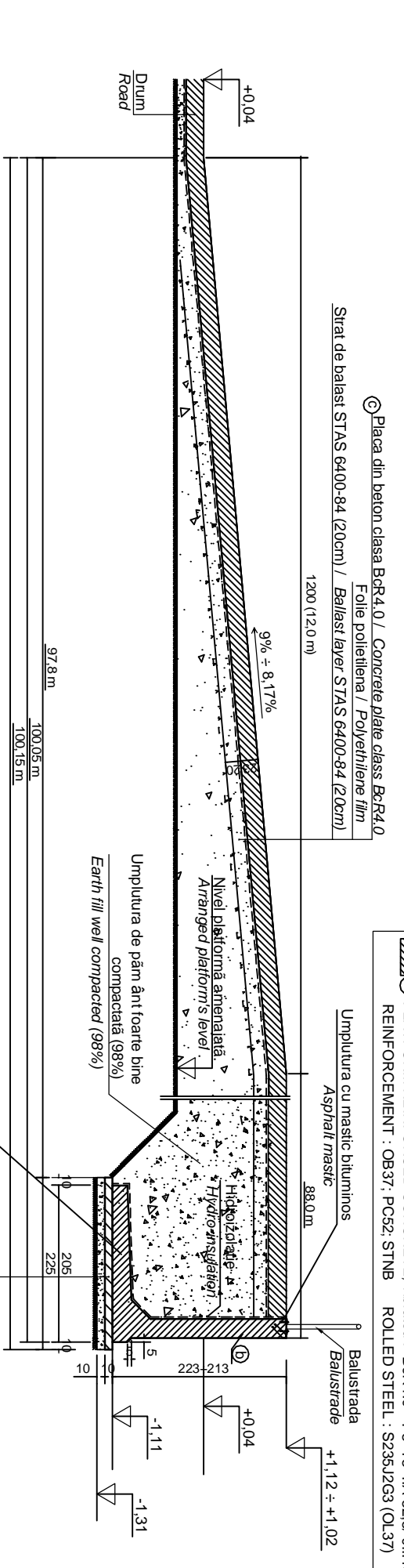


A - A (cotele dimensions in cm) SC. 1:50



DET. "a" SC. 1:10

B - B (cotele dimensions in cm) SC. 1:50



- ① PLAIN CONCRETE, vibrated (leveling) : C 8/10 -P4-T3-IIA 32.5/0...31
- ② REINFORCED CONCRETE, vibrated : C 25/30 -P4-T3-IIA 32.5/0...16
- ③ PLATFORM REINFORCED CONCRETE, vibrated : BcR4.0 -P8-T3-IIA 32.5/0...16
- ④ REINFORCEMENT : OB37; PC52; STNB ROLLED STEEL : S235J2G3 (QL37)
- ⑤ BETON SIMPLU, vibrat (egalizare) : C 8/10 -P4-T3-IIA 32.5/0...31
- ⑥ BETON ARMAT, vibrat : C 25/30 -P4-T3-IIA 32.5/0...16
- ⑦ BETON ARMAT PLATFORMA, vibrat : BcR4.0 -P8-T3-IIA 32.5/0...16
- ⑧ OTEL BETON : OB37; PC52; STNB LAMINATE : S235J2G3 (QL37)



ELEMENT DE CAPAT MONOLIT CAST IN PLACE END PIECE ELEMENT

Index	Date	Modification	Proiectant	Approved Consultant	Approved CFR
D					
C					
B					
A					

GUVERNUL ROMANIEI  
ROMANIAN GOVERNMENT

PROIECT FINANȚAT DE UNIUNEA EUROPEANĂ  
EUROPEAN UNION FINANCED PROJECT

CFR

C.N.C.F. "C.F.R." - S.A.

Consultant / Consultant	Set proiect	Project manager	Date	Semnatura
GRUPUL FERROVIAR DELLO SIVIO TALFER WILSON	Set proiect	R. Luzzi	12.2011	
OBERMEYER FLAMEN + BERATUNG GmbH	Coordonator Sectiune I	C. Gambelli	12.2011	
	Verificat	Giuseppe Fioravanti	12.2011	

Subcontractant / Subcontractor	Responsabil Subcontractant	Project Designer	Date	Semnatura
	A. Stanclu - Dinulescu	Popescu Remus Dan	12.2011	
	Elaborat		12.2011	

Reabilitarea liniei de cale ferata Brasov - Simeria, parte componenta a a coridorului IV Pan European, pentru circulatia trenurilor cu viteza maxima a de 160 km/h.

Tronsoani : Brasov - Sighisoara

Rehabilitation of the railway line Brasov - Simeria, component Part of the IV Pan-European Corridor, for the trains circulation with maximum speed of 160 km/h.

Section : Brasov - Sighisoara

Faza / Phase: D.E. / E.D.

RAMPA - SECTIUNI CARACTERISTICE - "STANGA"  
LOADING LEDGE - REPRESENTATIVE SECTIONS - "LEFT"

Scale / Scale: 1:50

UT/UT

Nr./No: 01/01

3A4(630x297)=0.19m<sup>2</sup>