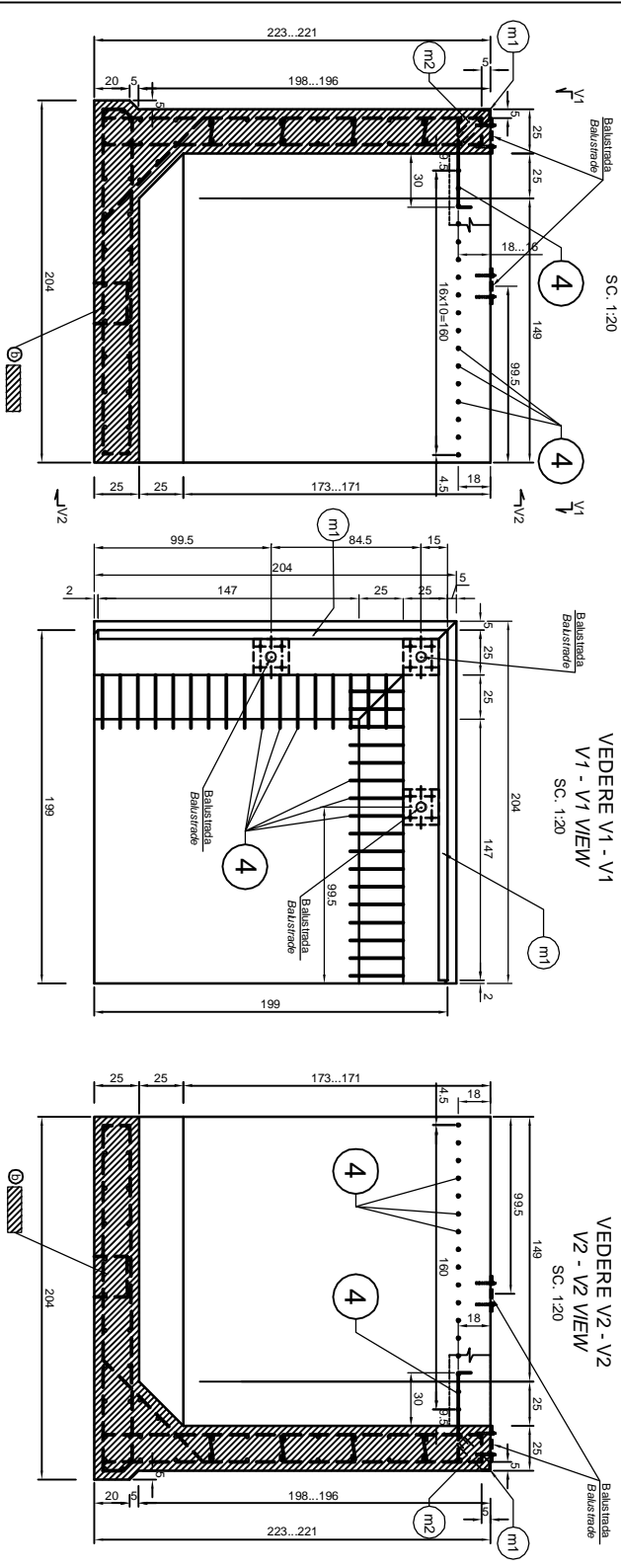


**COFRAU ELEMENT DE COLT MONOLIT ZRC-LINE
SHUTTER OF CAST-IN-PLACE CONCRETE
CORNER ELEMENT ZRC- RAILWAY LINE**

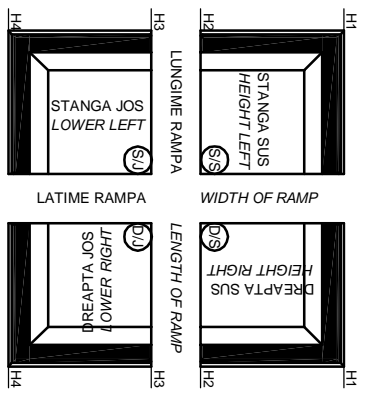


SC. 1:10 cold dimensions in mm

m1 - L50x50x5-
L=1.97m.
prazni Ø10 / 20cm
ancher / hook
L=0.65m. (10 buc. - pcs.)

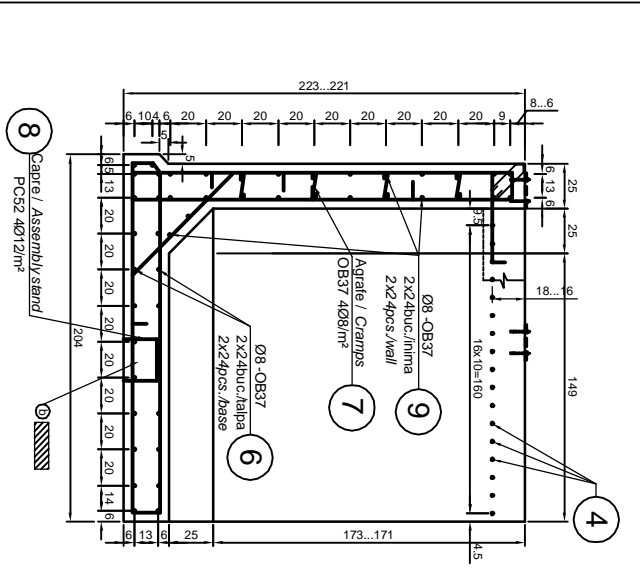
2buc. x 1.97m. x 3.77kg/m = 15.30kg.
m2 - Ø10 OBR37 - 20buc. x 0.65m. = 13.00m. x 0.617kg/m. = 8.34kg.
OTEL / STEEL : S235J2G3 (QL37) TOTAL = 23.6kg.

SCHEMA DE DISPUNERE A
ELEMENTELOR DE COLT DIN
BETON ARMAT MONOLIT
(in planşa este desenaat elementul de
colt "stanga sus")
THE SCHEME FOR
EMPLACING THE CORNER
ELEMENTS MADE OUT
MONOLITH REINFORCED
CONCRETE (in the drawing, the
corner element is in height left corner
of the plan).



⊗ BETON ARMAT - vibrat :
C 25/30 - P4 - T3 - IIA - 32.5 / 0...16
OTEL BETON : OBR37 - PC52
LAMINATE : S235J2G3 (QL37)
⊙ REINFORCED CONCRETE, vibrated :
C 25/30 - P4 - T3 - IIA - 32.5 / 0...16
REINFORCEMENT : OBR37 - PC52
ROLLED STEEL : S235J2G3 (QL37)

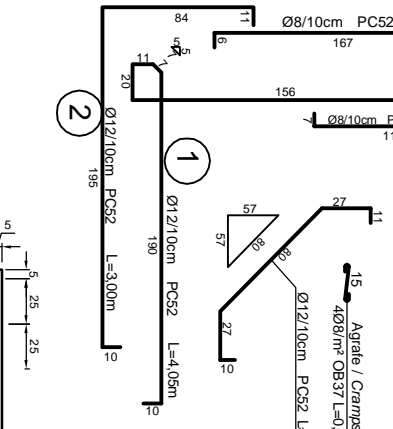
**ARMARE ELEMENT DE COLT MONOLIT ZRC-LINE
REINFORCING CAST-IN-PLACE
CORNER ELEMENT ZRC- RAILWAY LINE**



Este desenaat elementul de colt
"stanga sus"
It is drawn the corner element
in height left corner of the plan

EXTRAS ARMATURA BILL OF REINFORCEMENT

Marca	Ø	Lungimea unei bare Bar length No. pcs.	Nr. Bare Ø8	Lungimi pe diametre / Lengths on diameters Ø8	Ø12
1	12	4.05	34		137.70
2	12	3.00	34		102.00
3	8	1.80	34		61.20
4	8	2.00	34		68.00
5	12	1.55	30		46.50
6	8	1.85	48		93.60
7	8	0.30	32		9.60
8	12	0.75	16		12.00
9	8	1.70	48		91.20
10	8	0.75	10		7.50
11	12	2.10	4		8.40
Lungimi totale pe Ø				201.90	306.60
Greutati pe ml.				0.395	0.888
GREUTATE TOTALA KG.				79.80	272.30



NOTA
Pentru toate armaturile, raza de curbură de îndoire
va fi egala cu 3d
NOTE
For all reinforcements, the radius of mandrel for
bending is equal to 3d

CLIENT / CLIENT	CFR ROMANIAN GOVERNMENT	C.N.C.F. - S.A.
CONSULTANT / CONSULTANT	OBBERMEYER Flumen + servicii GmbH	TECNIC Consulting Engineers
SUBCONTRACTANT / SUBCONTRACTOR	A. Simbidiu - Dniulescu	Popescu Ramis Dan
APROBAT / APPROVED	R. Luiza	12.2011
VERIFICAT / CHECKED	C. Gimbelli	12.2011
VERIFICAT / CHECKED	Giuseppe Fioravanti	12.2011

GOVERNUL ROMANIEI
ROMANIAN GOVERNMENT

PROIECT FINANȚAT DE UNIUNEA EUROPEANĂ A
EUROPEAN UNION FINANCED PROJECT

CONSULTANT / CONSULTANT

OBBERMEYER
Flumen + servicii GmbH

TECNIC
Consulting Engineers

SUBCONTRACTANT / SUBCONTRACTOR

A. Simbidiu - Dniulescu

Popescu Ramis Dan

APROBAT / APPROVED

R. Luiza

12.2011

VERIFICAT / CHECKED

C. Gimbelli

12.2011

VERIFICAT / CHECKED

Giuseppe Fioravanti

12.2011

REABILITAREA LINEI DE CALĂ FĂRĂ BRAGOV - SIMEA, PĂRTEA COMPONENTĂ A 3A CONFIDENȚIALĂ
REABILITATION OF THE RAILWAY LINE BRAGOV - SIMEA, COMPONENT PART OF THE IV / Pan-European
CONFIDENCE FOR THE LINE CIRCULATION WITH MAXIMUM SPEED OF 160 km/h.
Section : Brasov - Sighisora

Proiect/Project
2004/RO16/PA/003
Faza / Phase
DE / ED.

Denumire desen / Drawing Title :

ELEMENT DE COLT MONOLIT PENTRU RAMPĂ TIP ZRC-LINE
CORNER ELEMENT FOR LOADING EDGE
ZRC-RAILWAY LINE TYPE - FORMWORK AND REINFORCEMENT DETAILS

Scale / Scară : 1:20

Urmas / Next : 1

Codificare / Codification System : E A S I 0 1 E 0 0 B C A C 0 0 0 0 0 0 3 1