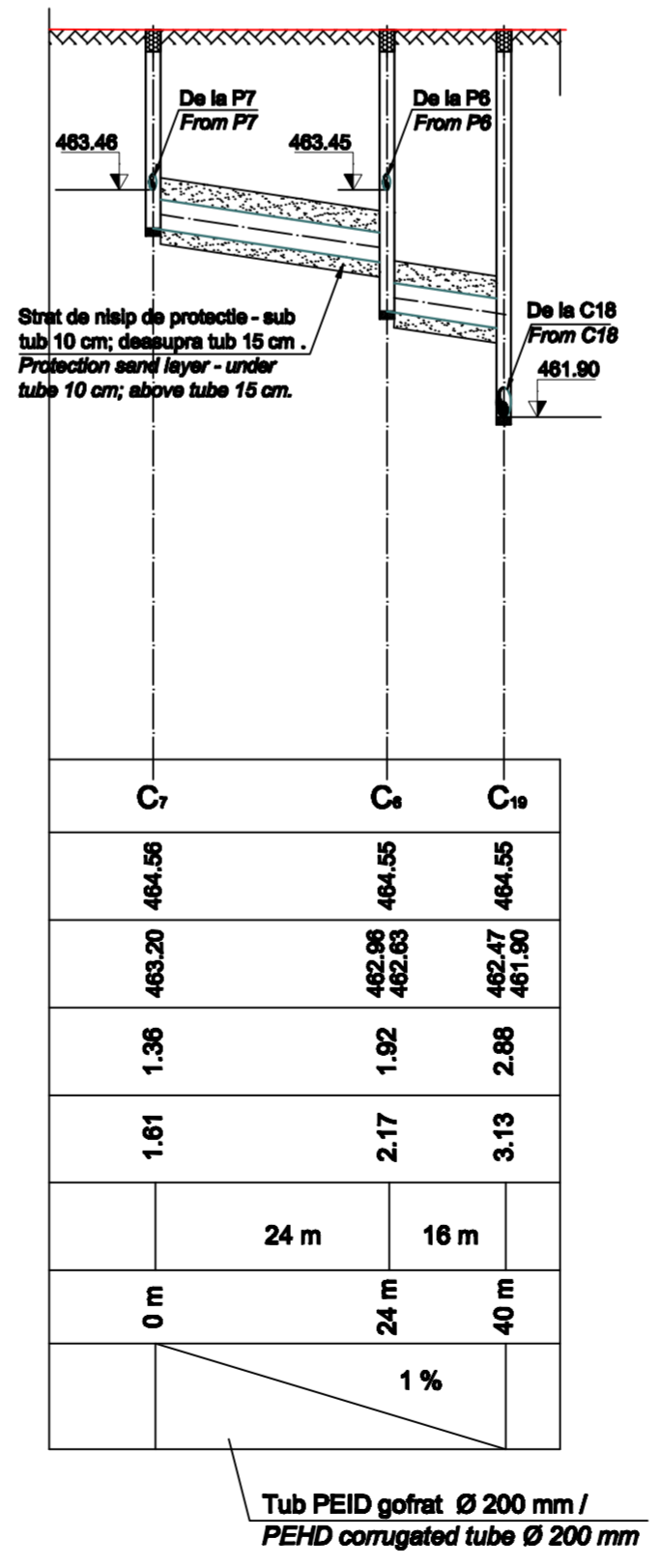
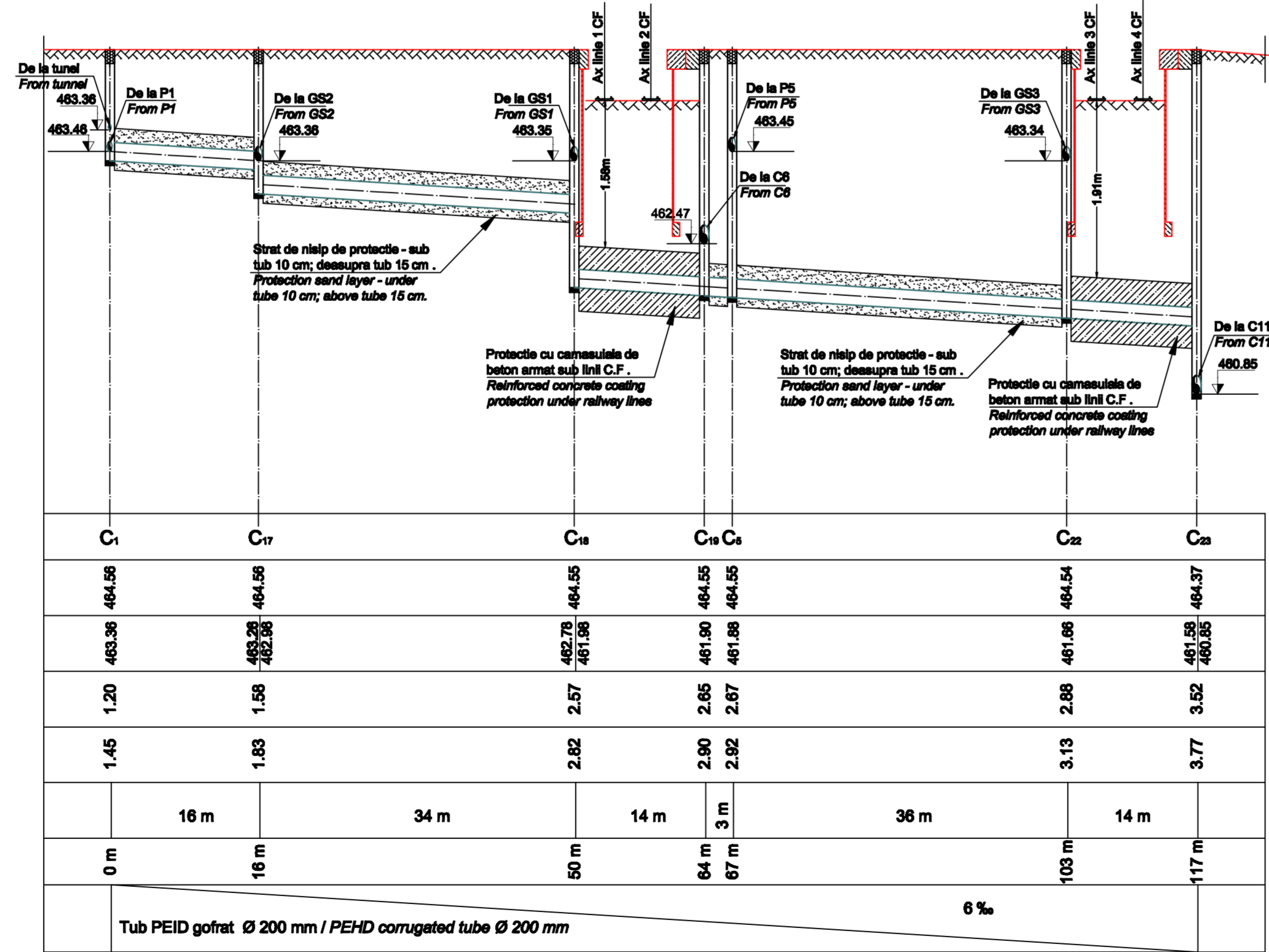
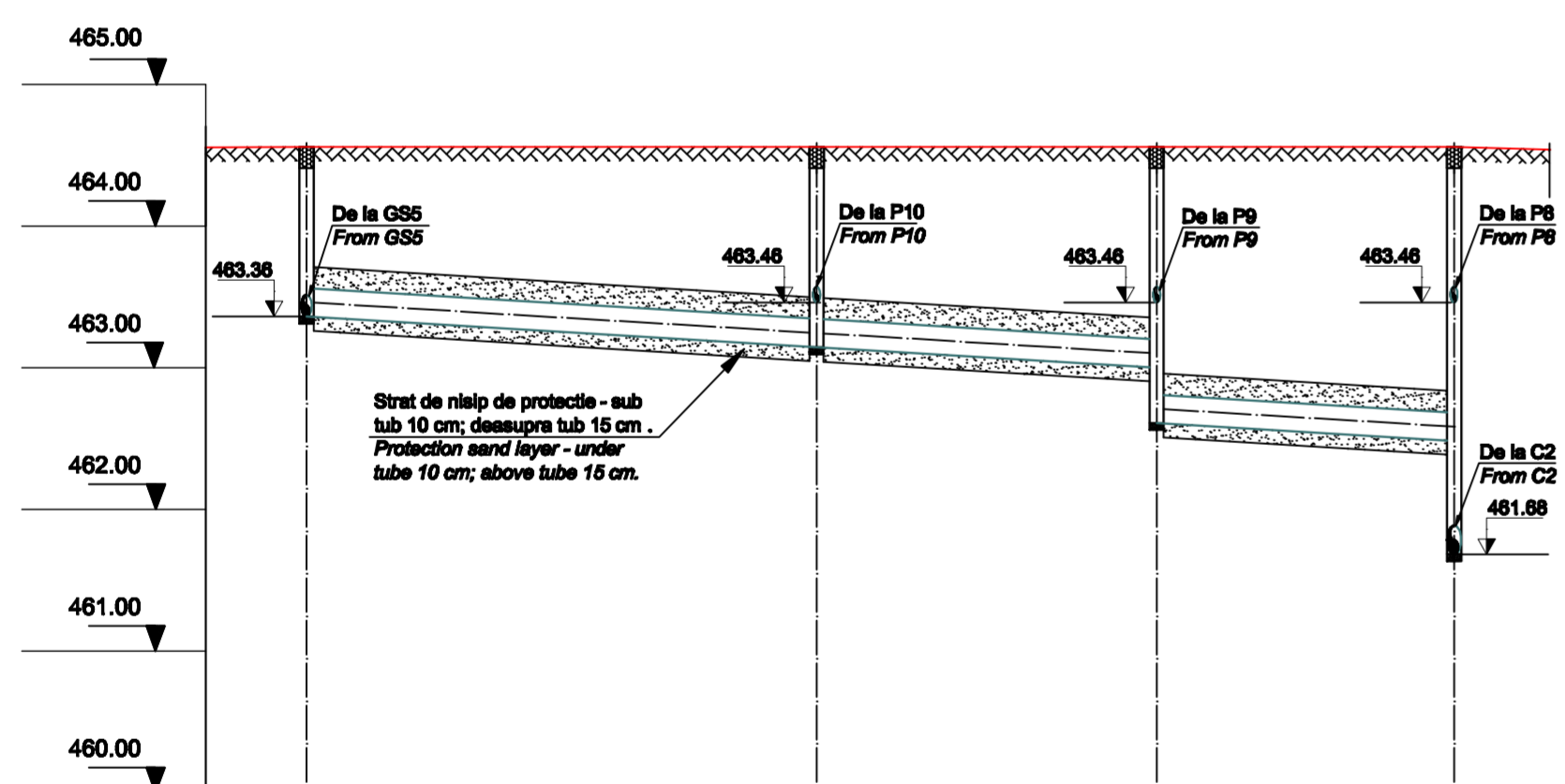


DENUMIRE CAMIN / INSPECTION CHAMBER NUMBER	C4	C5	C6	C7	C8	C9	C10	C11	C12	C13	C14	C15	C16 SNG	C17	
COTA TEREN AMENAJAT(CAPACITY LEVEL OF ARRANGED GROUND(COVER)	464.56	464.56	464.56	464.56	464.56	464.56	464.56	464.38	464.38	464.37	464.37	464.37	464.37	464.37	
COTA RADIER CAMIN/ INVERT LEVEL OF CHAMBER	463.36	463.21	463.50	463.78	464.08	464.36	464.64	464.92	465.20	465.48	465.76	466.04	466.32	466.60	
ADANCIME CAMIN/ CHAMBER DEPTH	1.20	1.76	2.00	2.80	2.88	2.00	3.03	3.03	3.17	3.31	3.31	3.32	2.54	2.82	
ADANCIME SAPATURA/ DIGGING DEPTH	1.45	2.01	3.05	3.13	3.05	3.28	3.28	3.42	3.56	3.77	3.77	3.77	2.70	2.87	
LUNGIME TRONSON/ SECTION LENGTH		24 m	24 m	14 m	14 m	38 m	24 m	24 m	24 m	36 m	18 m	4 m	5 m		
DISTANTE CUMULATE/ ACCUMULATED DISTANCES	0 m	24 m	48 m	62 m	76 m	114 m	138 m	162 m	186 m	186 m	210 m	210 m	215 m	220 m	
DIMENSIONE - MATERIAL TUB CANALIZARE / DIMENSION-MATERIAL OF SEWER TUBE	PANTA TUB/ TUBE SLOPE Tub PEID gofrat Ø 200 mm / PEHD corrugated tube Ø 200 mm											6 %		1 %	

DENUMIRE CAMIN / INSPECTION CHAMBER NUMBER	C15	C16	C17	C18
COTA TEREN AMENAJAT(CAPACITY LEVEL OF ARRANGED GROUND(COVER)	464.39	464.39	464.39	464.39
COTA RADIER CAMIN/ INVERT LEVEL OF CHAMBER	463.19	462.97	463.26	463.55
ADANCIME CAMIN/ CHAMBER DEPTH	1.20	1.62	1.87	2.80
ADANCIME SAPATURA/ DIGGING DEPTH	1.45	1.87	2.22	3.05
LUNGIME TRONSON/ SECTION LENGTH	36 m	24 m	21 m	81 m
DISTANTE CUMULATE/ ACCUMULATED DISTANCES	0 m	36 m	60 m	61 m
DIMENSIONE - MATERIAL TUB CANALIZARE / DIMENSION-MATERIAL OF SEWER TUBE	PANTA TUB/ TUBE SLOPE Tub PEID gofrat Ø 200 mm / PEHD corrugated tube Ø 200 mm			

NOTA :  
 \* Prezenta plan se va consulta impreuna cu urmatoarele planse :  
 EA51-01-C-17-L8-IS-01-0-2-011-1, EA51-01-C-17-L8-IS-01-0-2-011-1.  
 \* Legenda se va consulta in planul EA51-01-C-17-L8-IS-01-0-2-011-1.  
 NOTE :  
 \* The present drawing will be consulted with together plans :  
 EA51-01-C-17-L8-IS-01-0-2-011-1, EA51-01-C-17-L8-IS-01-0-2-011-1.  
 \* The legend will be consulted in the plan no. EA51-01-C-17-L8-IS-01-0-2-011-1.



DENUMIRE CAMIN / INSPECTION CHAMBER NUMBER	C19	C20	C21	C22
COTA TEREN AMENAJAT(CAPACITY LEVEL OF ARRANGED GROUND(COVER)	464.56	464.56	464.56	464.56
COTA RADIER CAMIN/ INVERT LEVEL OF CHAMBER	463.36	463.14	463.00	462.45
ADANCIME CAMIN/ CHAMBER DEPTH	1.20	1.42	1.95	2.80
ADANCIME SAPATURA/ DIGGING DEPTH	1.45	1.67	2.20	3.13
LUNGIME TRONSON/ SECTION LENGTH		36 m	24 m	21 m
DISTANTE CUMULATE/ ACCUMULATED DISTANCES	0 m	36 m	60 m	81 m
DIMENSIONE - MATERIAL TUB CANALIZARE / DIMENSION-MATERIAL OF SEWER TUBE	PANTA TUB/ TUBE SLOPE Tub PEID gofrat Ø 200 mm / PEHD corrugated tube Ø 200 mm			

DENUMIRE CAMIN / INSPECTION CHAMBER NUMBER	C1	C17	C18	C19	C20	C21
COTA TEREN AMENAJAT(CAPACITY LEVEL OF ARRANGED GROUND(COVER)	464.56	464.56	464.56	464.56	464.56	464.56
COTA RADIER CAMIN/ INVERT LEVEL OF CHAMBER	463.36	463.20	463.50	463.78	464.08	464.36
ADANCIME CAMIN/ CHAMBER DEPTH	1.20	1.56	2.07	2.85	2.88	3.02
ADANCIME SAPATURA/ DIGGING DEPTH	1.45	1.83	2.82	2.80	3.13	3.77
LUNGIME TRONSON/ SECTION LENGTH		16 m	34 m	14 m	36 m	14 m
DISTANTE CUMULATE/ ACCUMULATED DISTANCES	0 m	16 m	50 m	64 m	67 m	103 m
DIMENSIONE - MATERIAL TUB CANALIZARE / DIMENSION-MATERIAL OF SEWER TUBE	PANTA TUB/ TUBE SLOPE Tub PEID gofrat Ø 200 mm / PEHD corrugated tube Ø 200 mm					

DENUMIRE CAMIN / INSPECTION CHAMBER NUMBER	C7	C8	C9
COTA TEREN AMENAJAT(CAPACITY LEVEL OF ARRANGED GROUND(COVER)	464.56	464.56	464.56
COTA RADIER CAMIN/ INVERT LEVEL OF CHAMBER	463.36	462.83	462.47
ADANCIME CAMIN/ CHAMBER DEPTH	1.20	1.62	2.80
ADANCIME SAPATURA/ DIGGING DEPTH	1.45	1.87	3.13
LUNGIME TRONSON/ SECTION LENGTH	24 m	16 m	40 m
DISTANTE CUMULATE/ ACCUMULATED DISTANCES	0 m	24 m	40 m
DIMENSIONE - MATERIAL TUB CANALIZARE / DIMENSION-MATERIAL OF SEWER TUBE	PANTA TUB/ TUBE SLOPE Tub PEID gofrat Ø 200 mm / PEHD corrugated tube Ø 200 mm		

EXECUTAREA LUCRARILOR DE MONTAJ A RETELOR DE ALIMENTARE CU APA POTABILA, CANALIZARE APA UZATA MENAJERA SI PLUVIALA SE VA FACE CU RESPECTAREA PRESCRIPTIILOR DIN CAIETELE DE SARCINI SPECIFICE ACESTOR TIPURI DE LUCRARI.

THE EXECUTION OF THE FIXING WORKS FOR POTABLE WATER SUPPLY, DOMESTIC WASTEWATER AND RAINWATER NETWORKS WILL BE CARRIED OUT ACCORDING TO THE PROVISIONS OF THE TECHNICAL SPECIFICATIONS THAT ARE INTENDED FOR THIS TYPE OF WORKS.

\* CATEGORIA DE IMPORTANTA: NORMALA, CALITATEA LUCRARILOR ASIGURANDU-SE DUPA MODELUL 3.  
 \* IMPORTANTA CATEGORIEI: NORMALA, CALITATEA LUCRARILOR ASIGURANDU-SE DUPA MODELUL 3.  
 \* CANTITATEA DE CALITATE A EXIGENTELOR ESSENTIALE BITE: (DIN II.G. 925/9)  
 \* THE QUALITY REQUIREMENT FOR ESSENTIAL DEMANDS IS: (DIN II.G. 925/9)

D					
C					
B					
A					
Index	Date	Modificari/Revisii	Proiectant	Aprobat Consilier	Aprobat CFR
		GVERNUL ROMANIEI / ROMANIAN GOVERNMENT		PROIECT FINANAT DE UNIUNEA EUROPEANA / EUROPEAN UNION FINANCED PROJECT	
		G.N.C.F. "C.F.R." - S.A.			
CLIENT / CLIENT		ITALFERR		OBERMEYER	
		GRUPUL FERROVIEI DELLO STATO / Joint Venture leader		PLANEN + BERATEN GmbH	
CONSULTANT / CONSULTANT		TECNIC		Consulting Engineers	
Aprobat	Dez. 2011	Dez. 2011	R. Licza	Dez. 2011	
Aprobat	Dez. 2011	Dez. 2011	C. Gambell	Dez. 2011	
Verificat	Dez. 2011	Dez. 2011	Gheorghe Floravari	Dez. 2011	
SUBCONTRACTANT / SUBCONTRACTOR		A.Stancu - Dinulescu		Duta Florian	
Aprobat	Dez. 2011	Dez. 2011		Dez. 2011	
Reabilitarea liniei de cale ferata Brasov - Simeria, parte componenta a coridorului IV Pan European, pentru circulatia trenurilor cu viteza maxima de 160 km/h, Tronsoanel: Brasov - Slighioara		Reabilitarea liniei de cale ferata Brasov - Simeria, parte componenta a coridorului IV Pan-European Corridor, for the trains circulation with maximum speed of 160 km/h, Section : Brasov - Slighioara		Project/Project 2004/RO16/PA003	
Denumire desen / Drawing Title :		Statie CF Racos. Retele externe de alimentare cu apa potabila, canalizare ape uzata menajera si pluviala. Profile longitudinale la retea de canalizare pluviala. Racos Railway Station. Water supply, domestic wastewater and rainwater sewerage networks. Longitudinal profiles for rainwater sewerage network.		Faza / Phase: D.E./E.D.	
Codificare / Codification System		Scara / Scale: 1:500		Lot / LOT: 1:00	
E A 5 1		0 1		E 1 1	
F 9		I 9		0 0	
S 1		0 4		0	