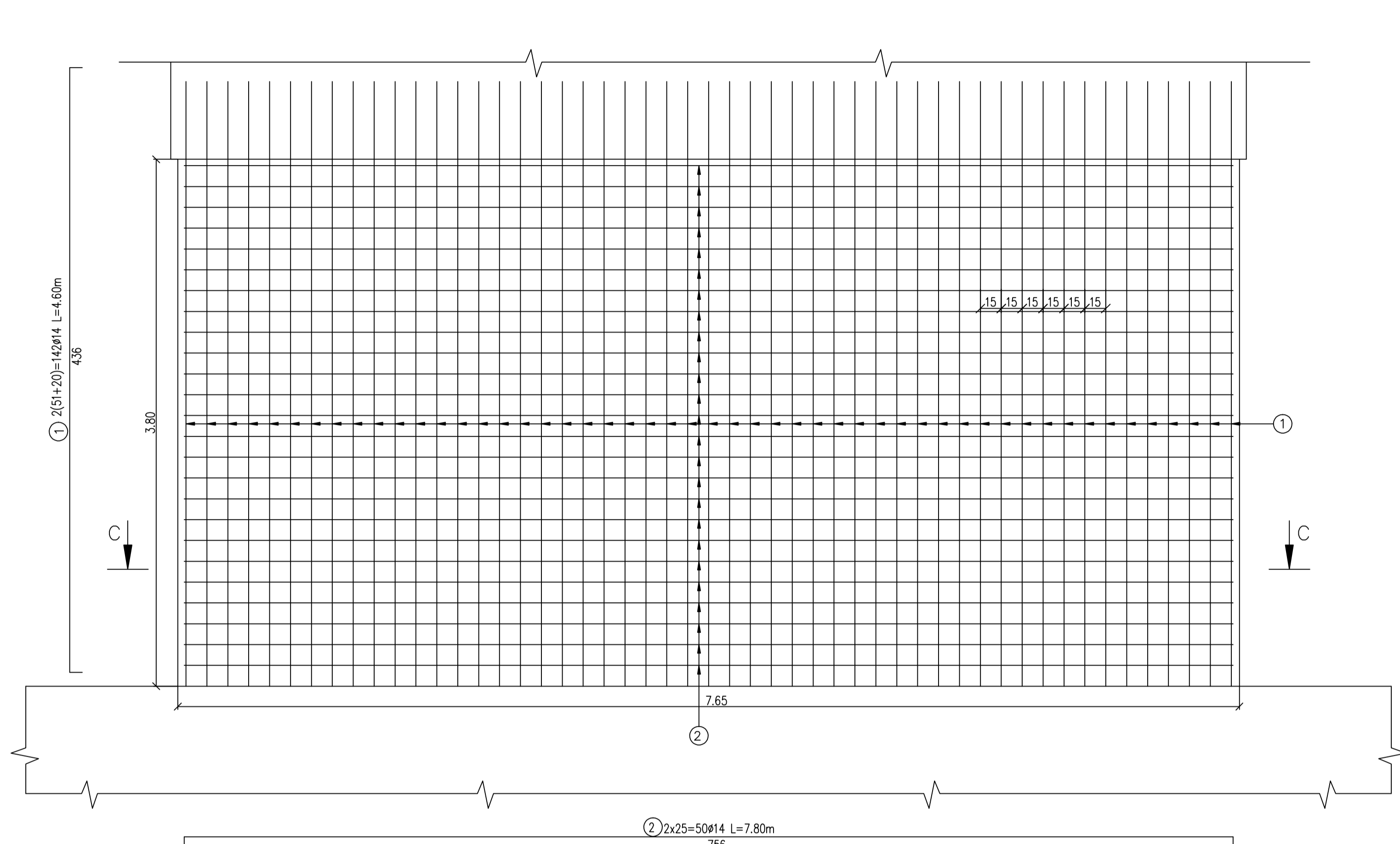
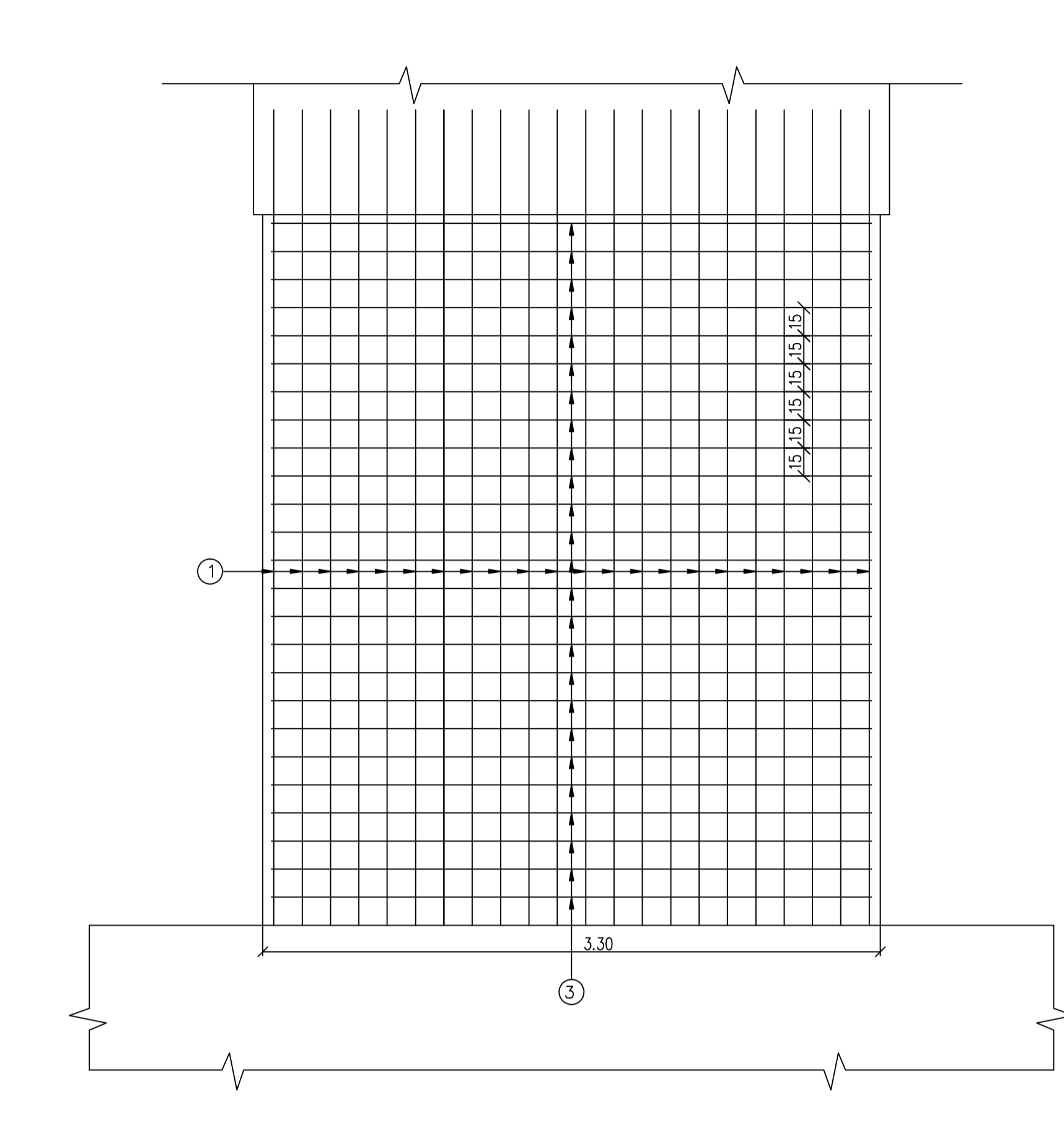


ARMAREA ELEVATIEI / REINFORCEMENT OF THE ELEVATION

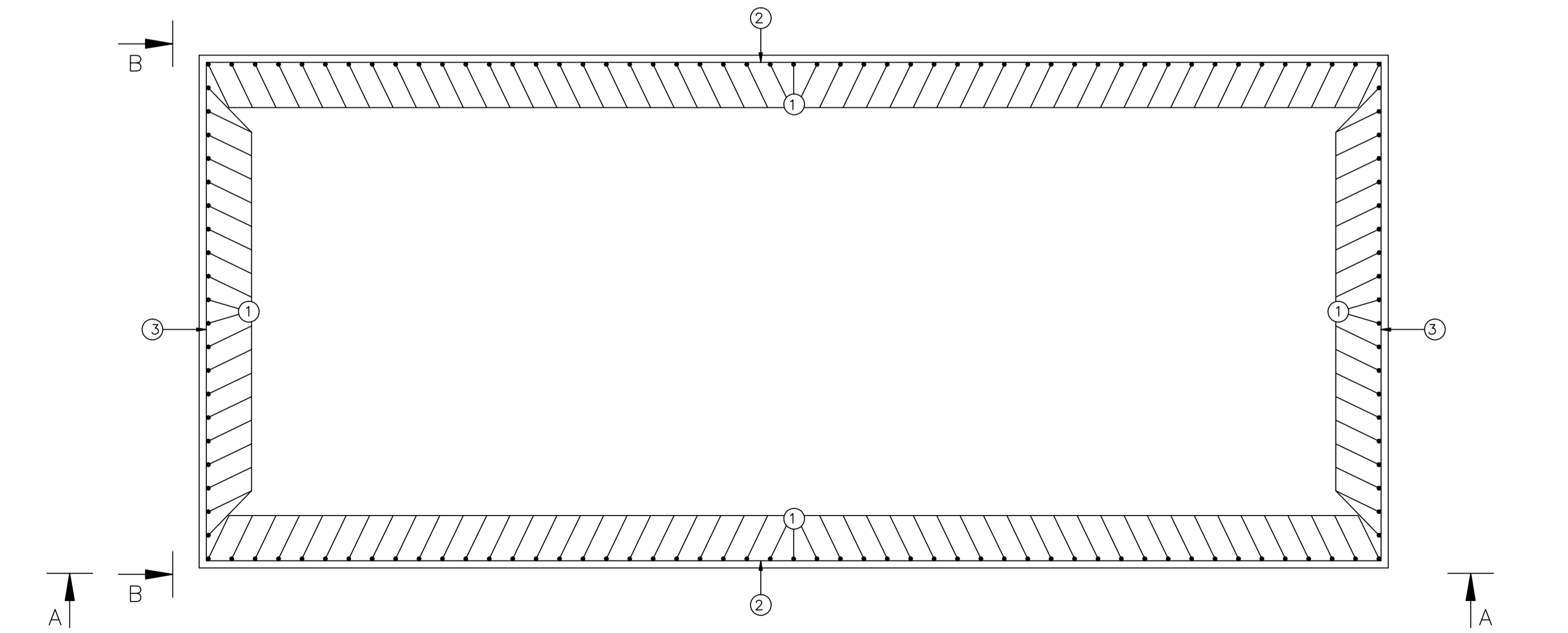
VEDERE A-A / A-A VIEW



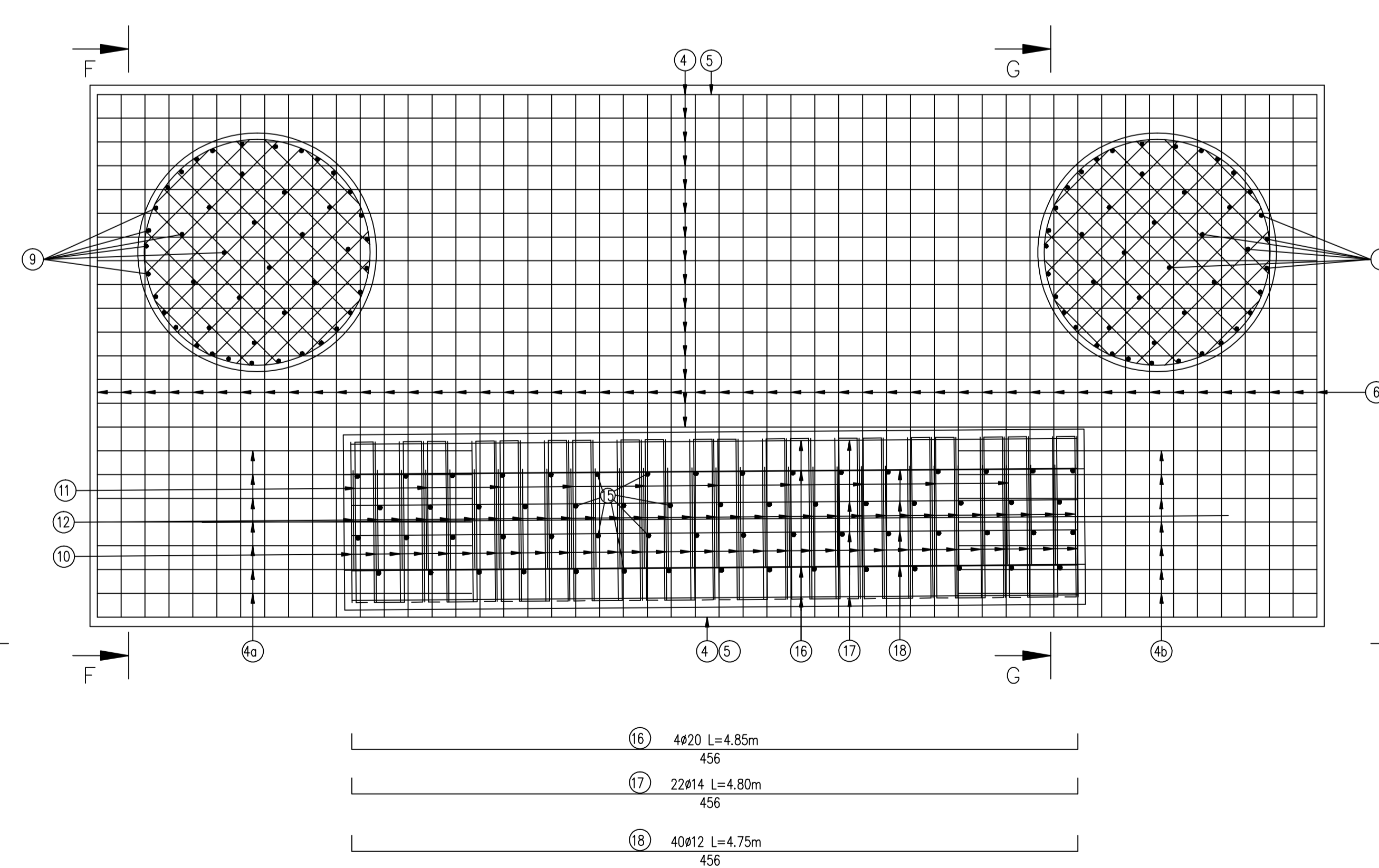
VEDERE B-B / B-B VIEW



VEDERE IN PLAN C-C / C-C VIEW

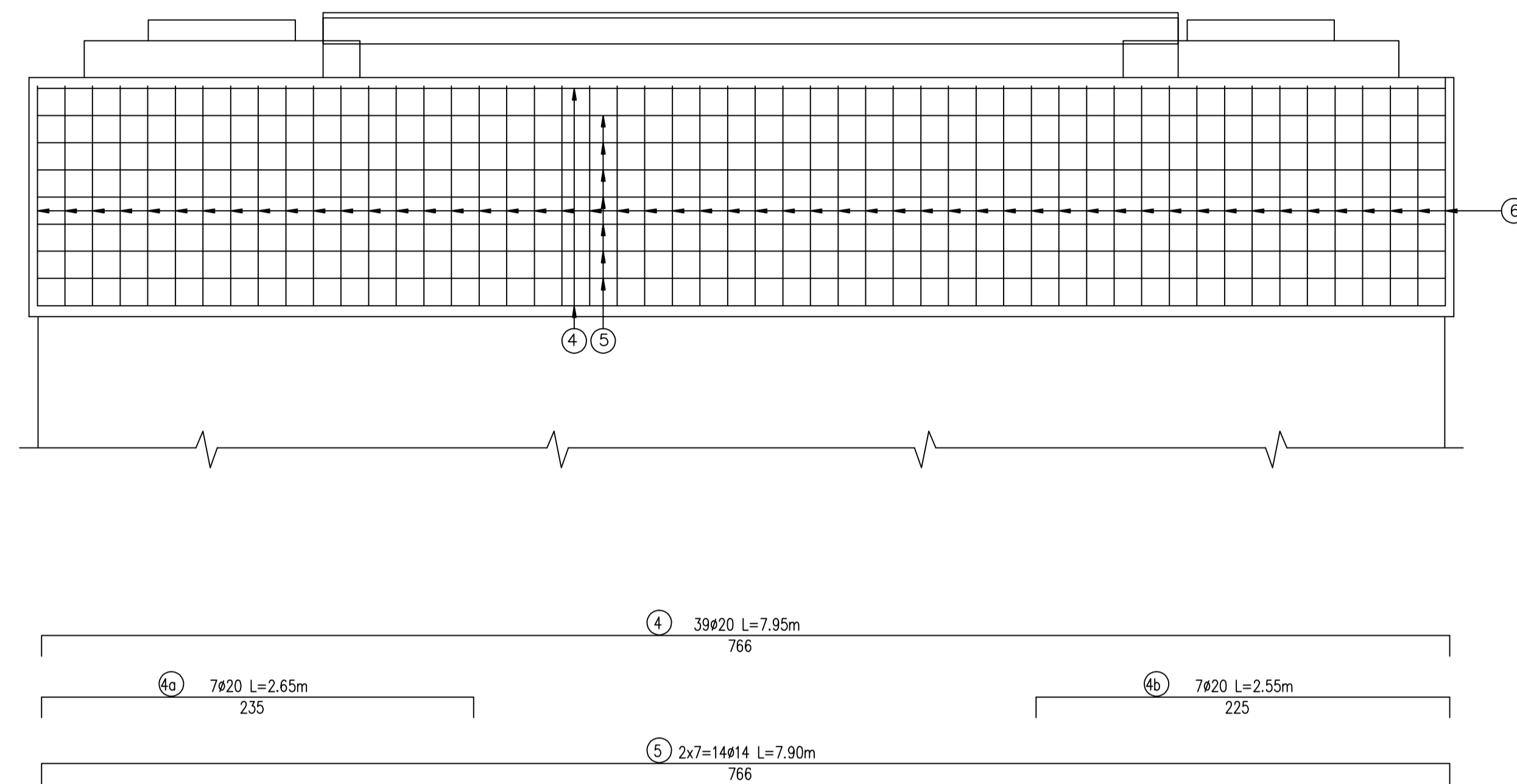


VEDERE IN PLAN E-E / E-E PLAN VIEW

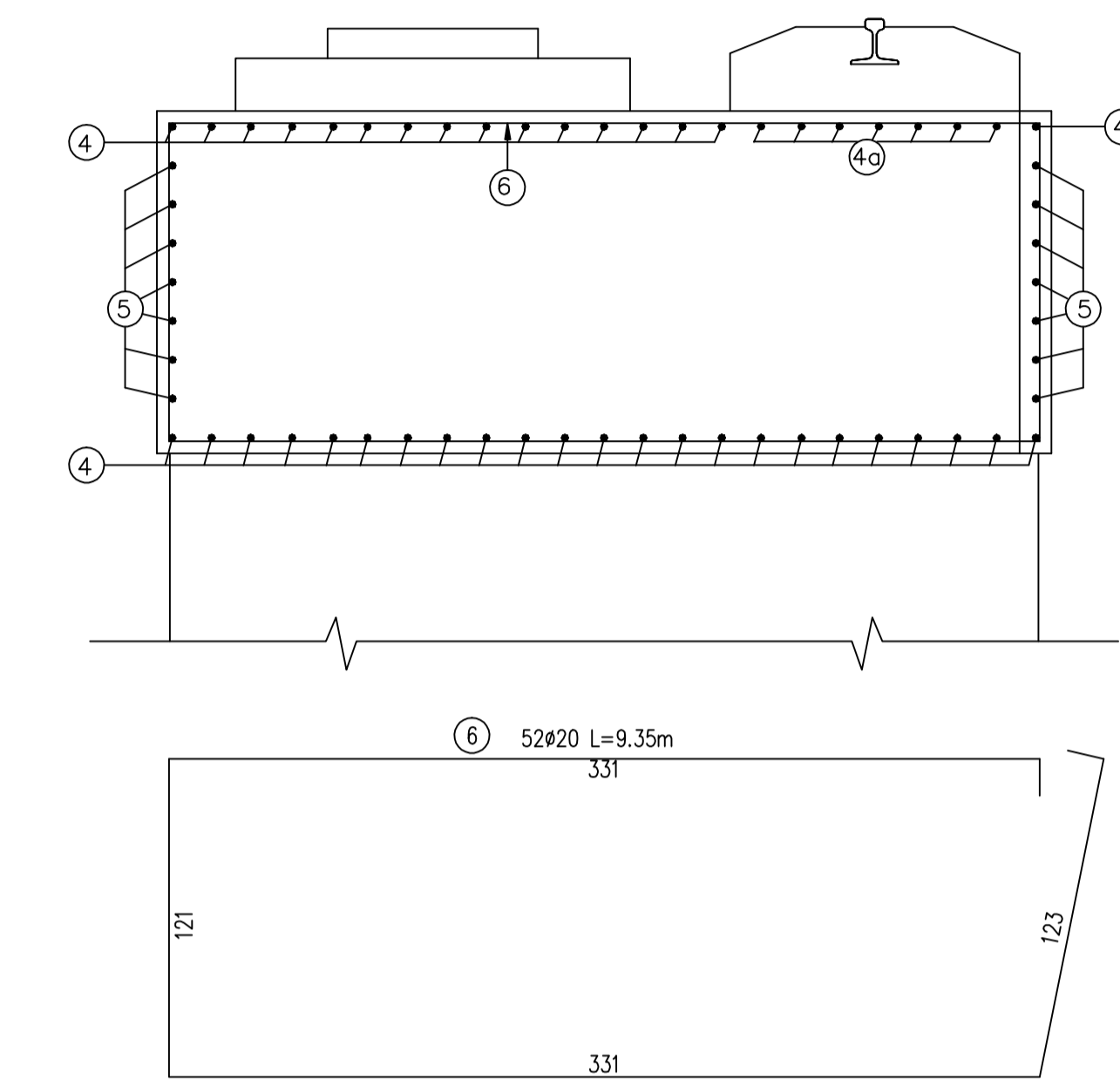


ARMAREA CUZINETILOR SI A BANCHETEI CUZINETILOR / REINFORCEMENT OF THE CUSHION AND SEAT

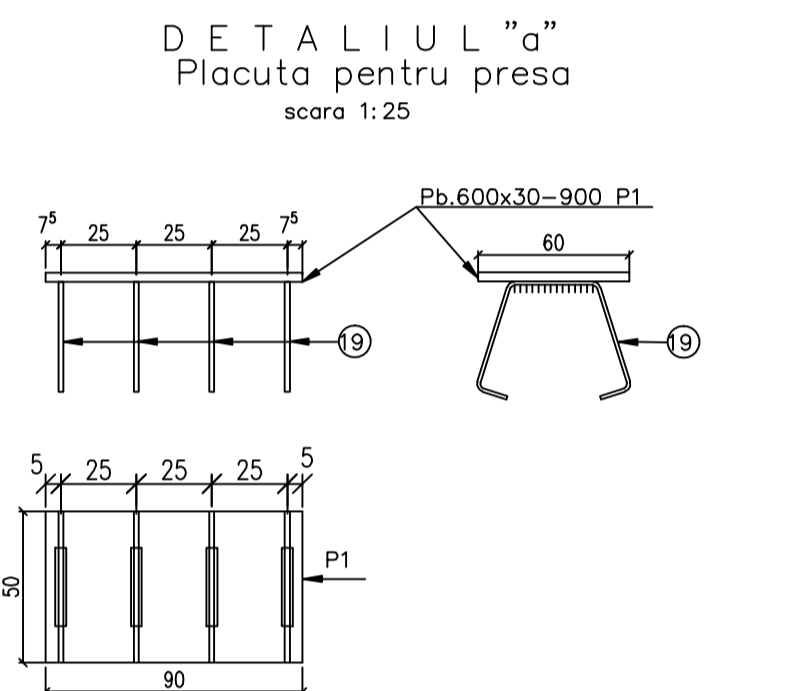
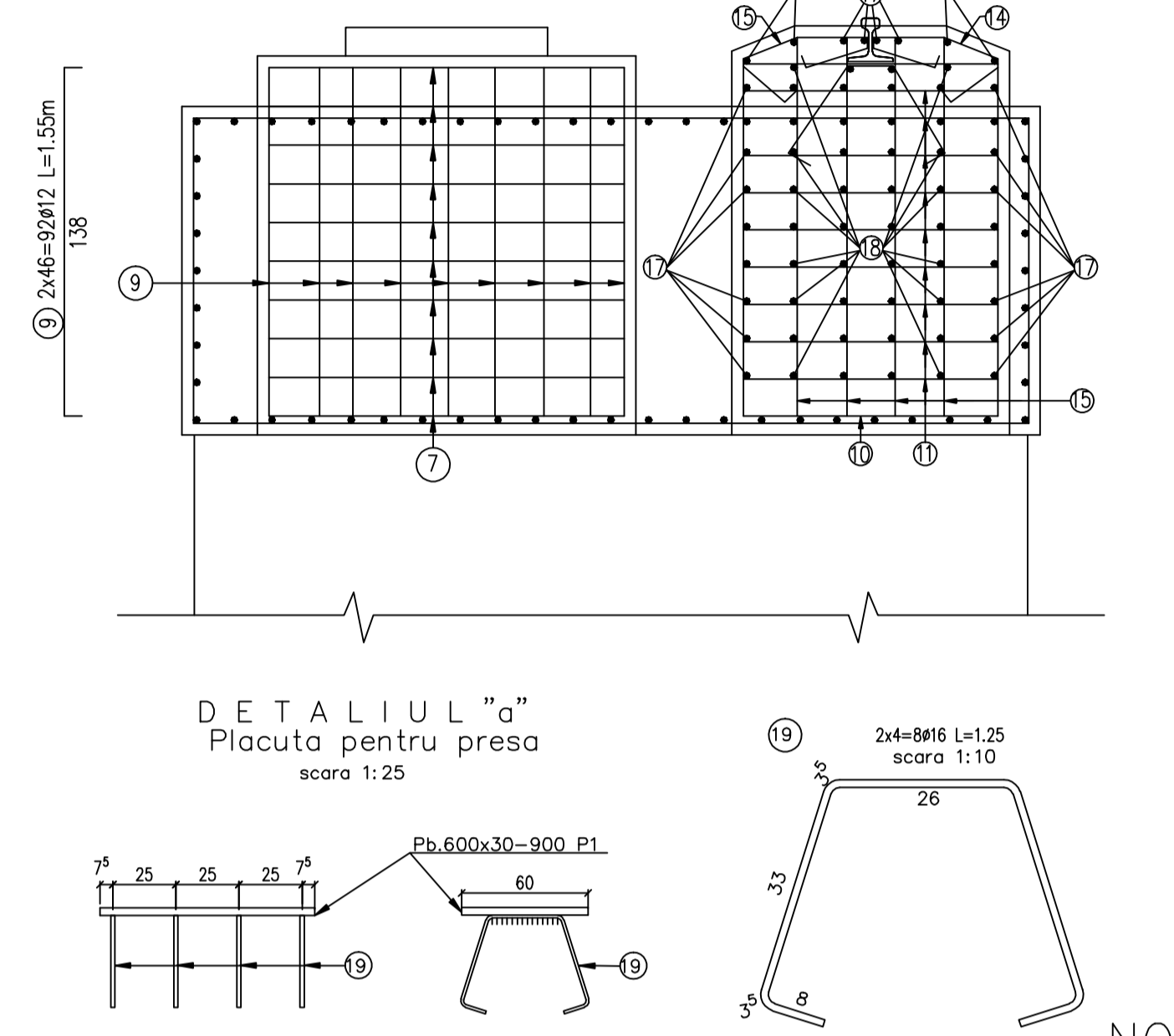
VEDERE D-D / D-D VIEW



SECTIUNE F-F / F-F SECTION



SECTIUNE G-G / G-G SECTION



PLACUTE PENTRU PRESE

Dimensiuni materiale/Unit	Buc.	Section/Long. mm/m	Section/Section mm/m	Section/Section mm/m	Section/Section mm/m
P1 Placuta Placuta	1	600x30	900	141.30	127.17
Total sortul					128
Sudura 2%					3
TOTAL kg					135

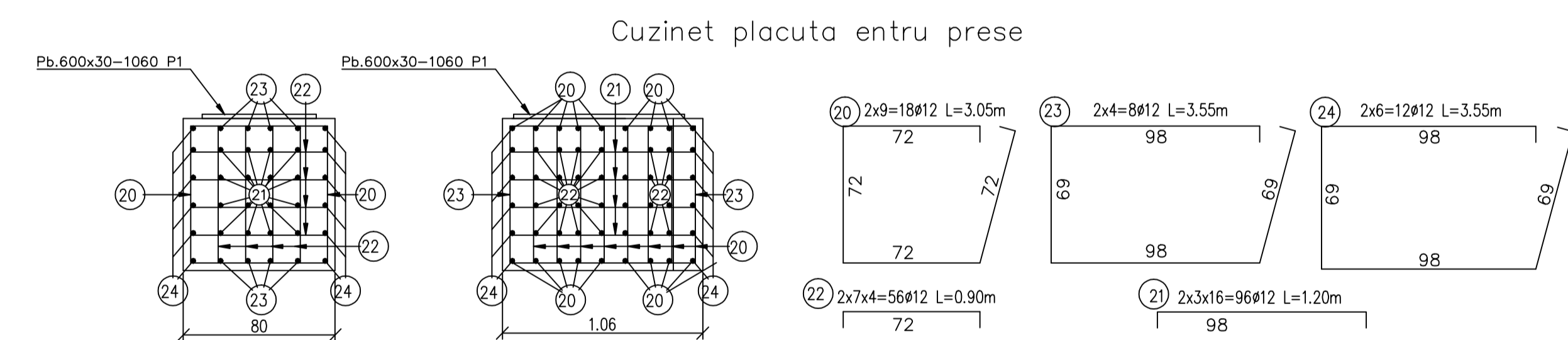
NOTA

Pentru mentinerea pozitiei corecte in timpul betonarii, se vor monta distantiere minim 4buc./m². Distantierele trebuie legate cu sarma de carcasa de armatura.

NOTA

In order to maintain the correct position during concreting, minimum 4pcs./m² distance pieces shall be mounted. The distance pieces shall be connected to the reinforcing framework, using wire.

Se interzice copierea, difuzarea, imprumutarea sau utilizarea in alte scopuri, fara permisiunea Alex Lider Company ca proprietar al desenului. This drawing is forbidden to be copied, lent or used in other purposes than those previously approved by Alex Lider Company as its owner.



EXTRAS DE ARMATURA PENTRU O PILA / REINFORCEMENT FOR ONE PIER

Marca	Diametru	Lung./buc. [m]	Nr. buc.	S355				
				Ø10	Ø12	Ø14	Ø16	Ø20
1	14	4.60	142			653.20		
2	14	7.90	50			390.00		
3	14	4.55	50			227.50		
4	20	7.95	39					310.05
4a	20	2.65	7					18.55
4b	20	2.55	7					17.85
5	14	7.90	14			110.60		
6	20	9.35	52					486.20
7	12	5.20	20		104.00			
8	12	28.50	20		570.00			
9	12	1.55	92		142.60			
10	10	4.95	31	153.45				
11	10	4.65	90	418.50				
12	12	1.20	31		37.20			
13	10	1.20	31		37.20			
14	10	1.25	31		38.75			
15	10	1.65	62		102.30			
16	20	4.85	4					19.40
17	14	4.80	22			105.60		
18	12	4.75	40		190.00			
19	16	1.25	8				10.00	
20	12	3.05	18		54.90			
21	12	1.20	96		115.20			
22	12	0.90	56		50.40			
23	12	3.55	8		28.40			
24	12	3.55	12		42.60			
Lungimi totale pe diametre (m)				750.20	1335.30	1486.90	10.00	852.05
Masa pe metru liniar (kg/m)				0.617	0.888	1.208	1.578	2.466
Masa pe diametre (kg)				462.53	1185.50	1796.79	15.78	2101.28
Masa pe tip otel (kg)					3445.00			2118.00
Masa totala culee (kg)							5565.00	
Pierderi 5%							278.25	
Masa totala culee (kg)							5850.00	

EXTRAS DE ARMATURA PENTRU O PLASA

Marca	Diametru	Buc. / asmezie	Lungime PE	Lungime/Ø
				S355
				Ø12
a	12	4	0.70	2.80
b	12	4	1.15	4.60
c	12	4	1.35	5.40
d	12	4	1.50	6.00
e	12	4	1.60	6.40
e	12	2	1.65	3.30
LUNGIMI PE DIAMETRU (m)				28.5

Beton: - C25/30 in elevatiile culeilor
 Concrete: - C35/45 in elevatiile abutment
 Armatura: - S355, PCS2
 Reinforcement: - min. 4cm expunere in aer/air exposed
 Strat de acoperire: - min. 4cm expunere in aer/air exposed
 Concrete cover

D					
C					
B					
A					
Index	Date	Modificari	Proiectant	Approbat	Approbat CFR
		Modification/Revizii	Designer	Approved/Consultant	Approved CFR
GUVERNUL ROMANIEI ROMANIAN GOVERNMENT		PROIECT FINANAT DE UNIUNEA EUROPEANA EUROPEAN UNION FINANCED PROJECT		C.N.C.F. "C.F.R." - S.A.	
CLIENT / CLIENT				CONSULTANT / CONSULTANT	
CONSULTANT / CONSULTANT		Date Date		Semnatura / Signature	
Approved / Approved		R. Luiza		03.2012	
Approved / Approved		C. Gambell		03.2012	
Verified / Checked		V. Kallidromalis		03.2012	
SUBCONTRACTANT / SUBCONTRACTOR		A. Dinulescu Stancu		03.2012	
Approved / Approved		Tolan Cliftan		03.2012	
Incomplet / Elaborat		Tolan Cliftan		03.2012	
Reabilitarea liniei de cale ferata Brasov - Simeria, parte componenta a cordoanelor IV Pan European, pentru circula pe transportor cu viteza maxima de 160 km/h, Tronsoane : Brasov - Sibghisiera Rehabilitation of the railway line Brasov - Simeria, component Part of the IV Pan-European Corridor, for the trains circulation with maximum speed of 160 km/h, Section : Brasov - Sibghisiera					
Denumire desen / Drawing Title : Statio/Station Racoa Viaduct Km 226+782.028 - D=2X355.00m+80.00m+55.00m+11.70m+2x18.00m PLAN ARMARE PILA 4 PIER 4 REINFORCEMENT PLAN					
Codificare / Codification System		Scara / Scale 1:25		Nr. / No 01/01	
E	A	5	1	E	1
B	C	P	V	0	2
1	2	1	2	0	2
0	1	2	1	2	0