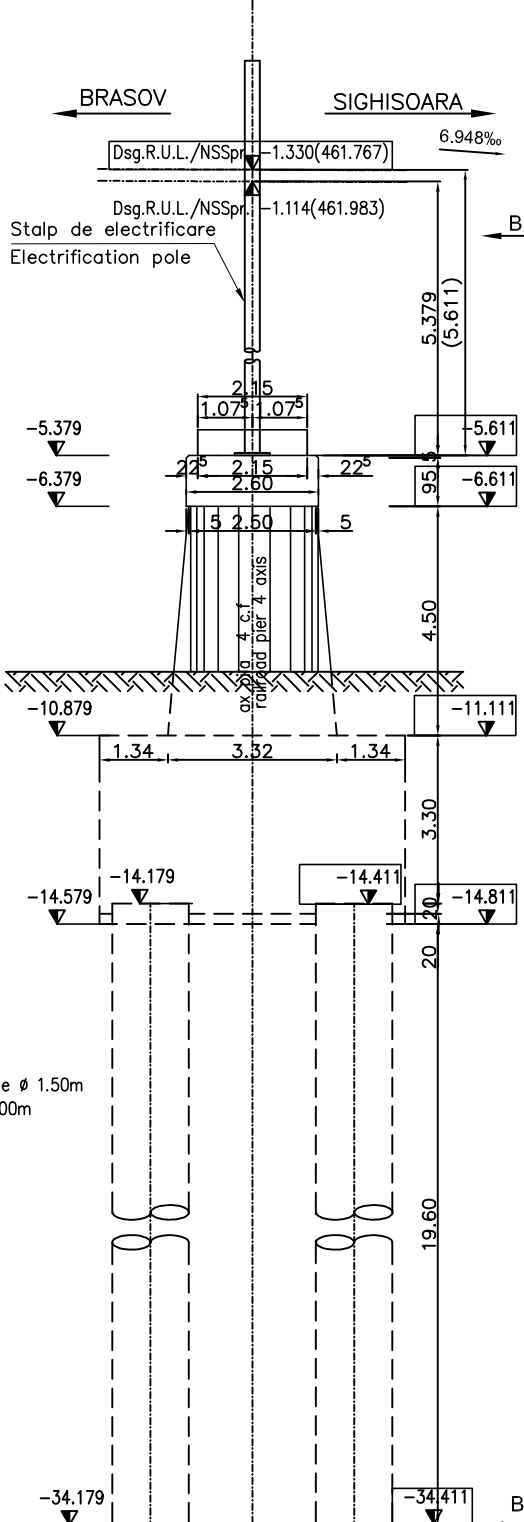
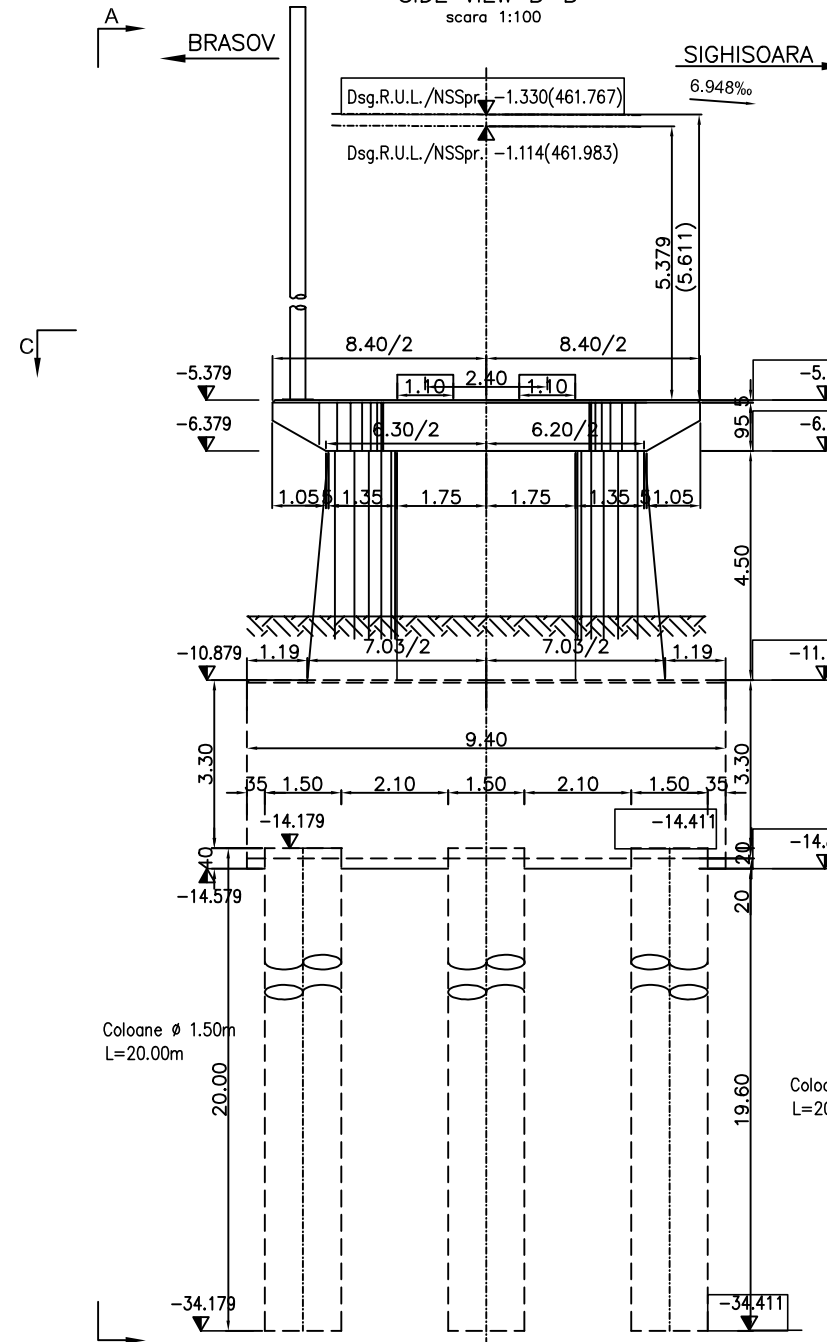


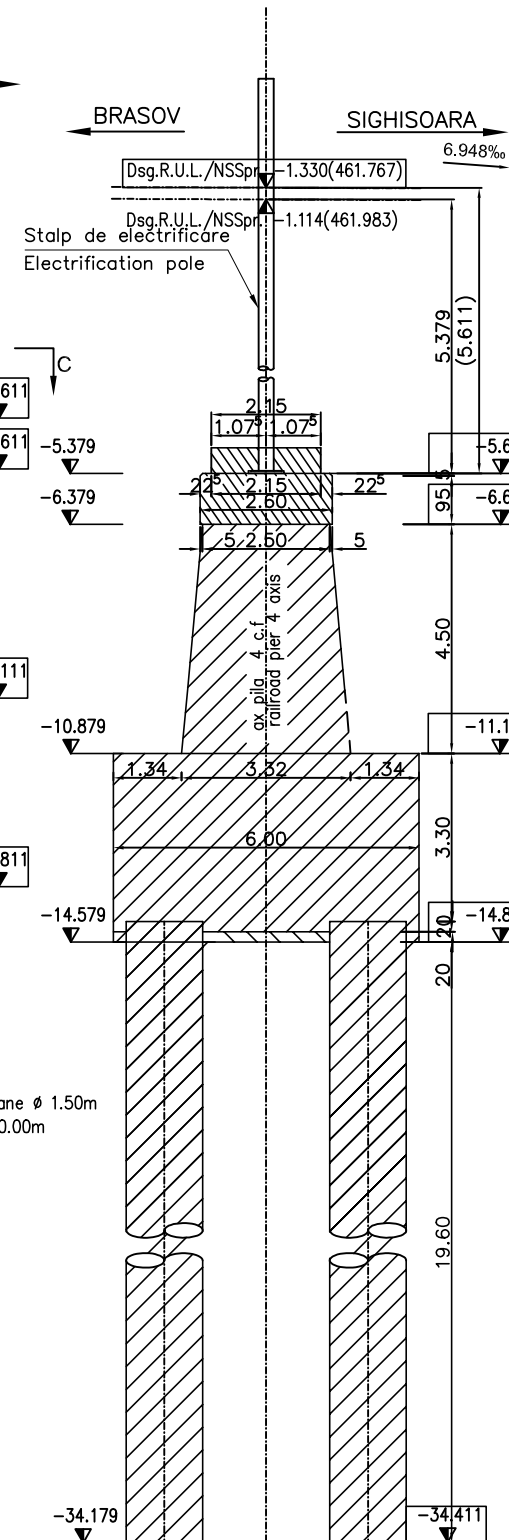
ELEVATIE A-A  
ELEVATION A-A  
scara 1:100



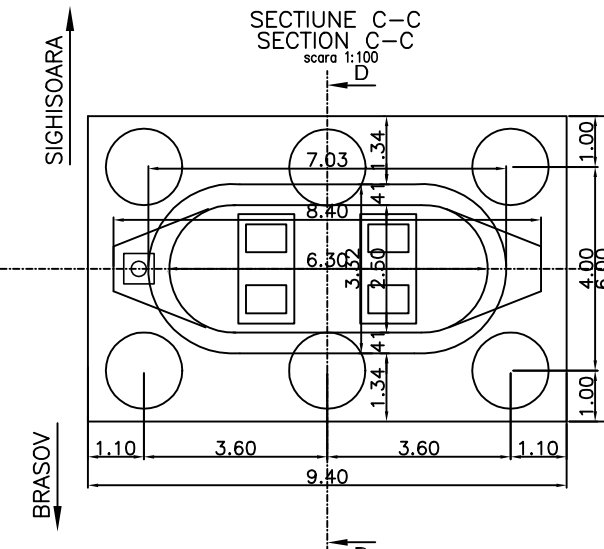
VEDERE LATERALA B-B  
SIDE VIEW B-B  
scara 1:100



SECTIUNE D-D  
SECTION D-D  
scara 1:100



SECTIUNE C-C  
SECTION C-C  
scara 1:100



NOTA:  
1. Prezentul plan s-a intocmit in conformitate cu dispozitia generala  
2. La executie se vor respecta cu strictete prevederile NORMATIVULUI NE 012/2-2010 Cod de practica pentru executarea lucrarilor din beton, beton armat si beton precomprimat-(partea I -beton si beton armat).  
3. Verificarea calitatii constructiei si receptionarea lucrarilor ascunse se vor face conform Normativului C 56-85.  
4. Convoitul de calcul pentru infrastructura este UIC (LM71 si SW/2).

NOTE:  
1. This plan has been drawn up according to the general disposition.  
2. During the works the provisions in NORM 012/2-2010: Practice Code for concrete, reinforced concrete and pre-stressed concrete walls (part 1 -concrete and reinforced concrete).  
3. The works quality checking and their acceptance shall be made according to Norm C56-1985.  
4. The infrastructure complies with the calculation convoy UIC (LM71 si SW/2).

ATENTIE/ATTENTION  
Aprovizionarea aparatelor de reazem se va face inaintea executarii cuzinetilor si a banchetei acestora. In cazul in care inaltimea aparatelor de reazem aprovizionate difera fata de cea considerata in proiect se vor modifica inaltimele pe reazem corespunzator cu noile aparate.  
The bearing blocks shall be supplied before building the bearings and their seats. In case the height of the supplied bearing blocks differs from that given in the project, the heights on the seats shall be adjusted so as to comply with the new devices.

ATENTIE/ATTENTION  
Cotele din paranteza apartin pilei 5 de pe linia II.  
The rates of bracket maintained to pier 5 of railway II.

LEGENDA BETOANELOR/CONCRETE LIST

- Beton armat în cuzineta si in bancheta cuzinetilor  
Reinforced concrete in the cushions and cushions bench  
C 35/45-CEM I/A-S 52,5-(XC4+XF3+XA2)-A/C=0,50-D<sub>max</sub>16-CI 0,20
- Beton armat in fundati indirecte(coloane si radiere) si in elevati:  
Plain concrete in abutments foundations:  
C 25/30-CEM H i/A-S 42,5-(XC4+XF3)-A/C=0,50-D<sub>max</sub>32-CI 0,20
- Beton de egalizare  
Concrete in the protection layer of the waterproofing  
C 25/30-CEM i/A-S 32,5-(XF3)-A/C=0,55-D<sub>max</sub>16-CI 0,20

In cazul in care temperatura in timpul turnarii este scazuta, se vor folosi cimenturile cu rezistenta initiala mare, R si aditivi acceleratori, iar in cazul turnarii pe timp cald, cimenturile cu rezistenta initiala uzuala, N si aditivi intarziatori (conf.NE 012/2-2010 si tabelului 2 din SR EN 197-1:2002)  
When the temperature during the casting is low, cements with high initial resistance, R and accelerating additives shall be used and when it is cast during warm weather, cements with common initial resistance, N and delaying additives shall be used (according the norm NE 012/2-2010 and table 2 for the SR EN 197-1: 2002).

This drawing is forbidden to be copied, lent or used in other purposes than those previously approved by ARES Lider Company as its owner.  
Se interzice copierea, difuzarea, imprumutarea sau utilizarea in alte scopuri, fara permisiunea ARES Lider Company ca proprietar al desenului.

D					
C					
B					
A	12.2011	Revizua 1 1 Revision	Dinu Andreea		
Indice Index	Data Date	Modificare Modification/Revision	Proiectant Designer	Aprobat Consultat Approved Consultant	Aprobat CFR Approved CFR

GUVERNUL ROMANIEI ROMANIAN GOVERNMENT PROIECT FINANȚAT DE UNIUNEA EUROPEANĂ EUROPEAN UNION FINANCED PROJECT

C.N.C.F. "C.F.R." - S.A.  
CLIENT / CLIENT

GRUPPO FERROVIE DELLO STATO  
Joint Venture leader  
CONSULTANT / CONSULTANT

CONSULTANT / CONSULTANT			Data Date	Semnatura Signature
Aprobat Approved	Șef proiect Project manager	\pxqc:R. Liuzza		---
Aprobat Approved	Coordonator Sectiune 1 Section 1 Coordinator	\pxqc:C. Gambelli		---
Verificat Checked	Expert Cheie Checking Expert	V.Kallidromitis		---

SUBCONTRACTANT / SUBCONTRACTOR				
Aprobat Approved	\pxqc:Responsabil Subconsultant Subconsultant Responsible	\pxqc:A. Dinulescu Stanciu	11.2011	---
Intocmit Elaborated	Proiectant Designer	Dinu Andreea	11.2011	

Reabilitarea liniei de cale ferata Braşov - Simeria, parte componentă a coridorului IV Pan-European, pentru circulația trenurilor cu viteză maximă de 160 km/h,  
Rehabilitation of the railway line Braşov - Simeria, component Part of the IV Pan-European Corridor, for the trains circulation with maximum speed of 160 km/h,  
Section : Braşov - Sighişoara  
Tronsonul : Braşov - Sighişoara  
Project/Project  
2004/RO/16/P/PA/003  
Faza / Phase:  
P.Th. / T.D.

Denumire desen / Drawing Title:  
INTERVAL / SECTION RACOS-CATA  
VIADUCT L=413.70m km 232+366.738/PLAN COFRAJ PILA 4 SI PILA 5 LINIA II  
VIADUCT L=413.70m km 232+366.738/PIER 4 AND 5 FORMWORK PLAN RAILWAY II

Codificare / Codification System	Scara / Scale 1:100	LOT / LOT	/No 01/01
E A 5 1	0 1	E	1 2
B B	P V	0 2	3 2
0 0 7	1		