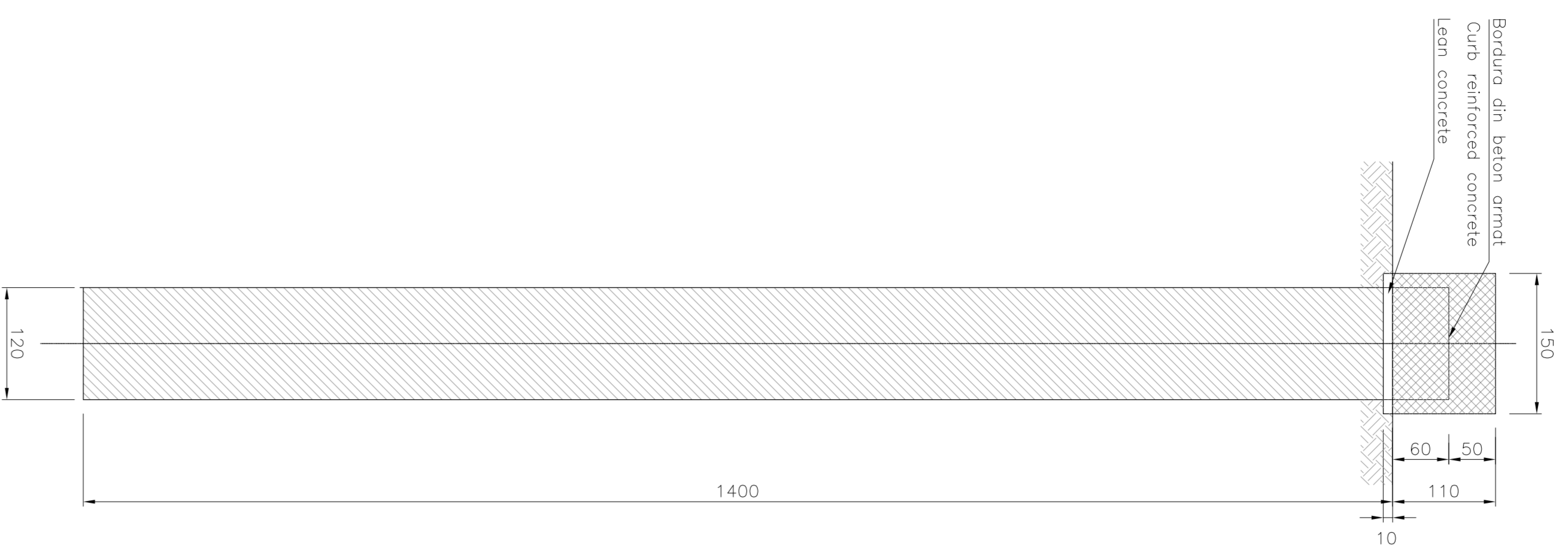
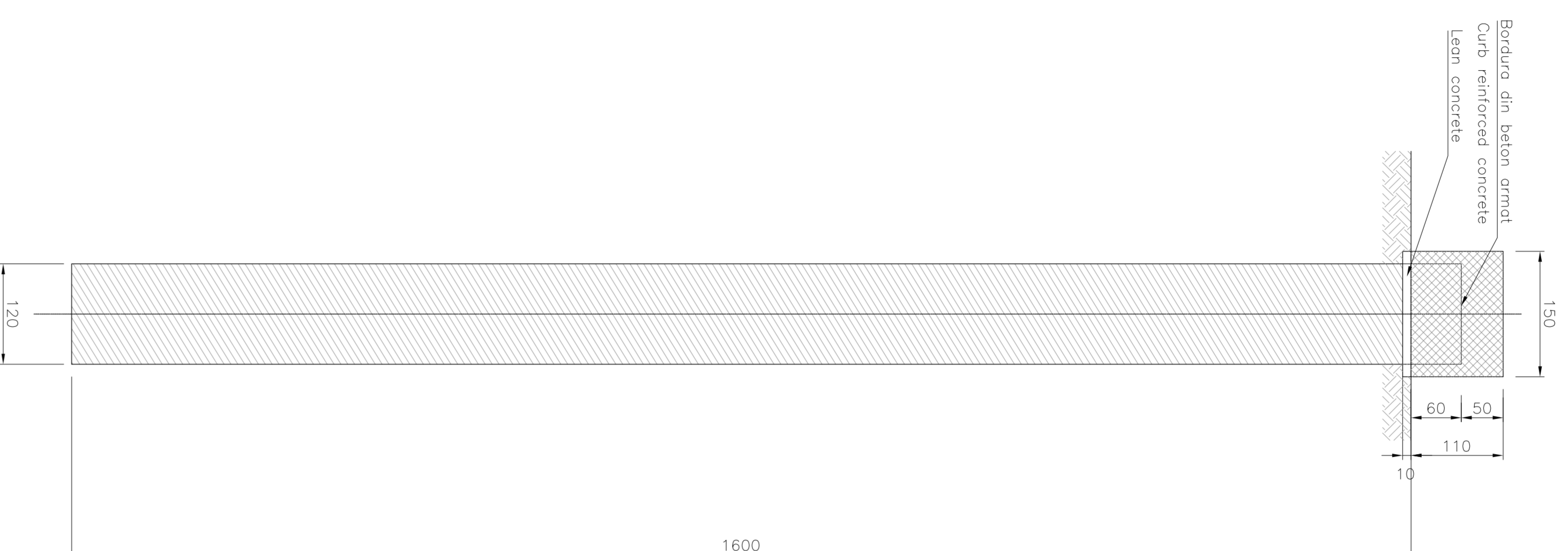


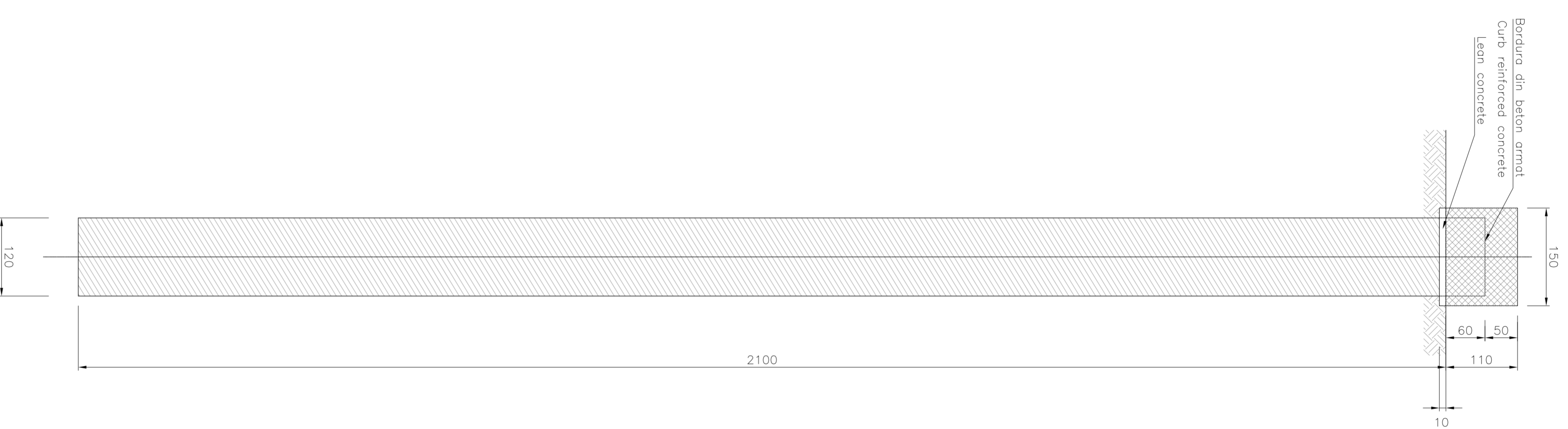
PILES WALL/PILA
 ø1200/1.30m
 H=15.00m Scale/Scale 1:50



PILES WALL/PILA
 ø1200/1.30m
 H=17.00m Scale/Scale 1:50



PILES WALL/PILA
 ø1200/1.30m
 H=22.00m Scale/Scale 1:50



PILES WALL/PILA
 ø1200/1.30m
 H=25.00m Scale/Scale 1:50



PILES WALL/PILA
 ø1200/1.30m
 H=28.00m Scale/Scale 1:50



MATERIAL TABLE	
CONCRETE BELL	
-	Type 12, MPa
-	Water/cement ratio ≤ 0.50
-	Minimum structural class S4/S5
-	Class of chloride content: C1 0.20
-	ø max aggregate = 22.4 mm
CONCRETE OILBR	
-	Type 12, MPa
-	Water/cement ratio ≤ 0.50
-	Minimum structural class S4/S5
-	Class of chloride content: C1 0.20
-	ø max aggregate = 22.4 mm
REINFORCING STEEL	
-	BLDG: covered by establishment
-	Weldable
LEAN CONCRETE	
-	Type 1
-	ick >=12 MPa
-	Cement type CEM I/V

Index	DATA	Titlu/Descriere	Proiectant	Aprobat/Comenzat	Amplasat/CFR
A	DATE	Mobilizare			
B		Montare/Executie			
C					

CLIENT / CLIENT
CFR
 C.N.C.F. "C.F.R." - S.A.

CONSULTANT / CONSULTANT
OBERMEYER
TECNIC
 Consulting Engineers

Approved	Projectant	Check	Date	Signature
	R. Lutz			
	C. Gimbili			
	C. Gimbili			
	C. Gimbili			

SUBCONSULTANT / SUBCONSULTANT
 Approved: _____
 Subcontract Responsible: _____

Reabilitarea liniei de cale ferată Buzov - Simleu, partea componentă a coridorului IV Pan European, Secțiunea 1 Buzov - Sighișoara marșanta de 180 km.
 Rehabilitation of the railway line Buzov - Simleu, component Part of the IV Pan-European Corridor for the trials circulation with maximum speed of 180 km/h.
 Section 1 Buzov - Sighișoara

HOMOROD TUNNEL
 Tunelul este din beton armat cu înălțime variabilă în funcție de condițiile de teren.
 The tunnel is made of reinforced concrete with variable height depending on the terrain conditions.

Confidence / Confidența Sistem	Sursa Sistem	LOT	Nr. / No							
E A S I	0 1	C	1 2	B Z	G A	0 4	0	0	0 0 1	0