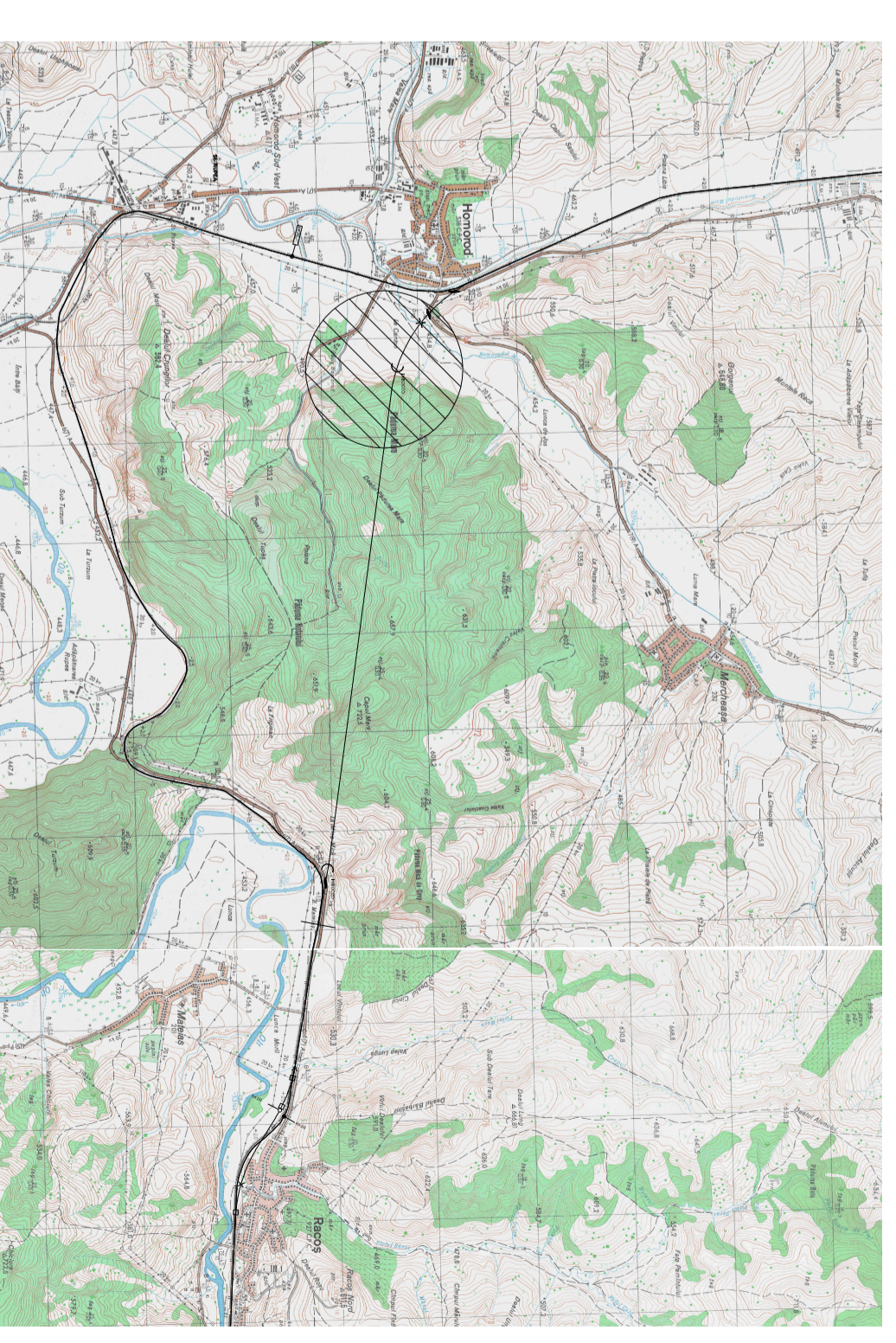
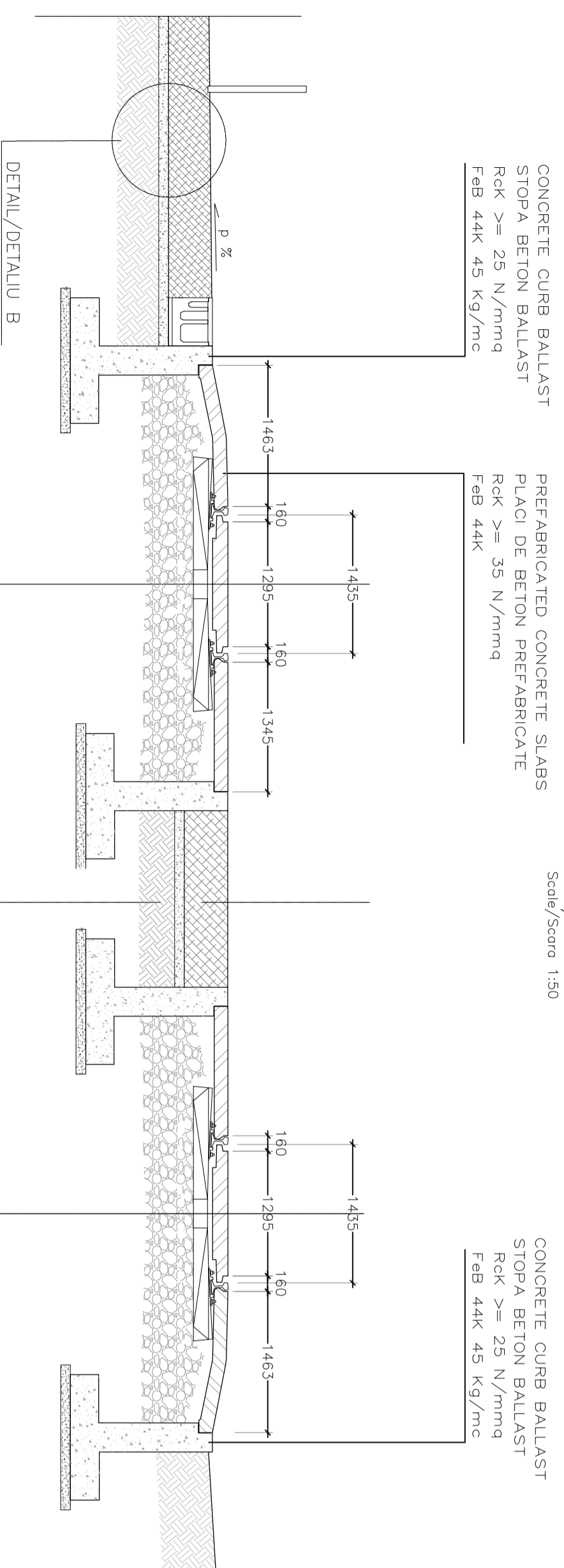


PLAN
Scale/Scara 1:1000

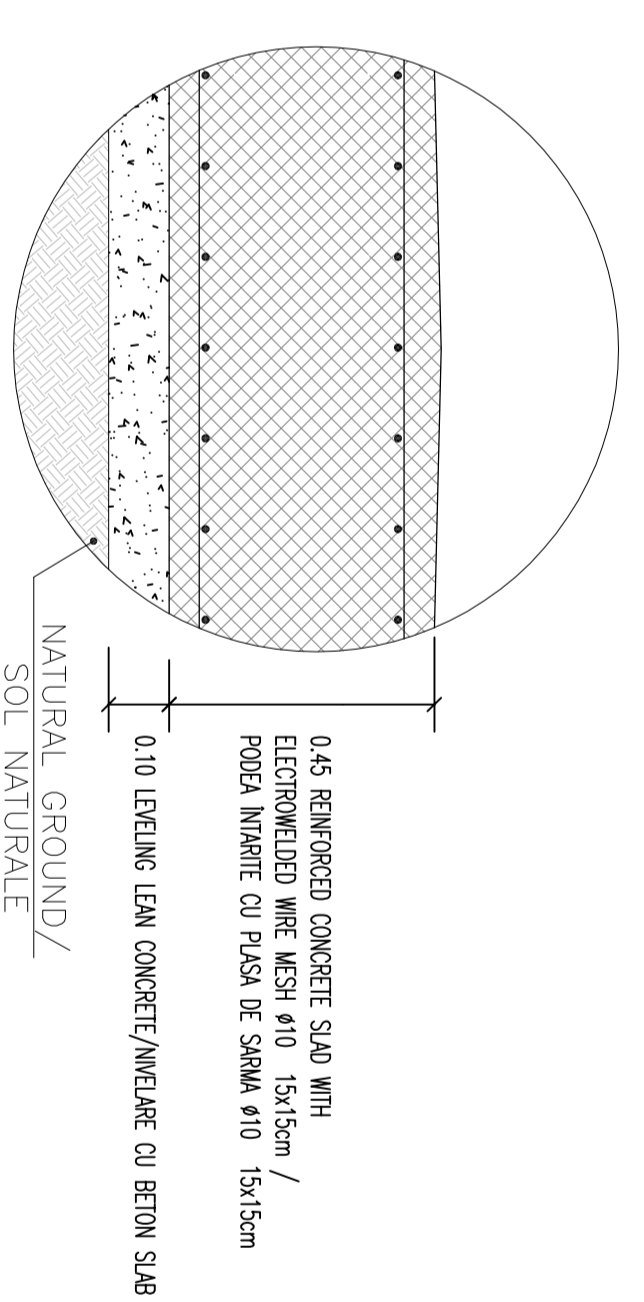


TUNNEL PORTAL BIMODAL VEHICLE / TUNEL PORTAL BIMODALE VEHICULULUI
DETAIL/DETALIU "A"

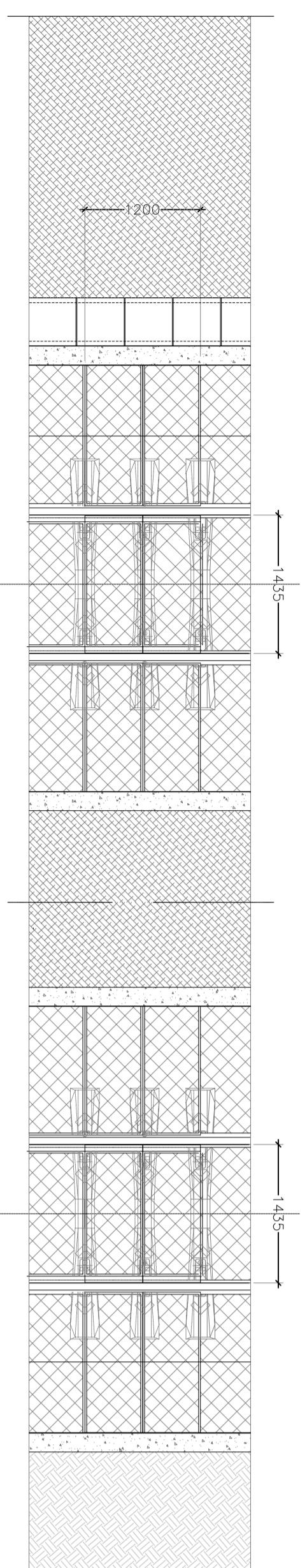
SECTION / SECTIUNEA
Scale/Scara 1:50



DETAIL/DETALIU "B"



PLAN
Scale/Scara 1:50



Index	Date	Modification	Projectant	Approved	Approved
A					
B					
C					
D					

CONTRACTOR / CONSULTANT	Project manager	Date	Signature
APPROVED	R. Lizza		
APPROVED	C. Gambelli		
APPROVED	C. Gambelli		
APPROVED	C. Gambelli		
APPROVED	C. Gambelli		
APPROVED	C. Gambelli		

CLIENT / CLIENT	Projectant	Approved
CFR		
C.N.C.F. "C.F.R." - S.A.		

CONSULTANT / CONSULTANT

SUBCONSULTANT / SUBCONSULTANT
 Responsabil Subconsultant
 Responsabil Subconsultant
 Responsabil Subconsultant
 Responsabil Subconsultant
 Responsabil Subconsultant
 Responsabil Subconsultant

Realizarea liniei de cale ferată Braşov - Simeria parte componentă a coridorului IV Pan European, pe traseul de 160 km.
 Sectione 1 Braşov - Sighişoara
 Pan-European Corridor, for the trains circulation with maximum speed of 160 km/h.
 Section 1 Braşov - Sighisara

Project/Project
 Faza / Phase:
 P.Th. / T.D.

Denumire desen / Drawing Title:
TUNNEL HOMOROD / TUNEL HOMOROD
 HOMOROD ENTRANCE
 ZONA NSRP/RE HOMOROD

Codificare / Codification System
E A S 1 0 1 C 1 2 T S G N 0 2 0 0 0 7 0

Scale / Scara
 Variat / Various

Lot

Nr. / Nr