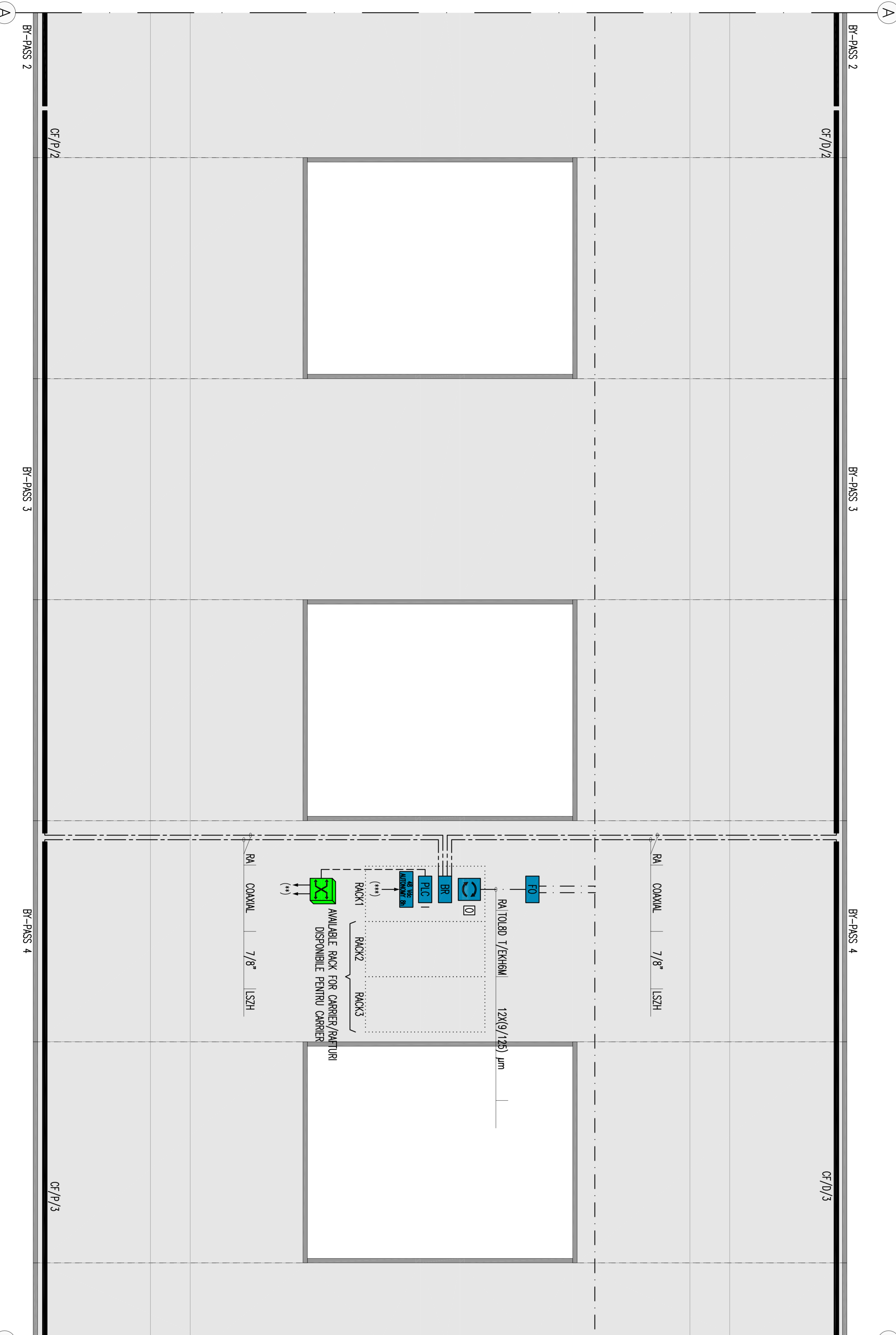
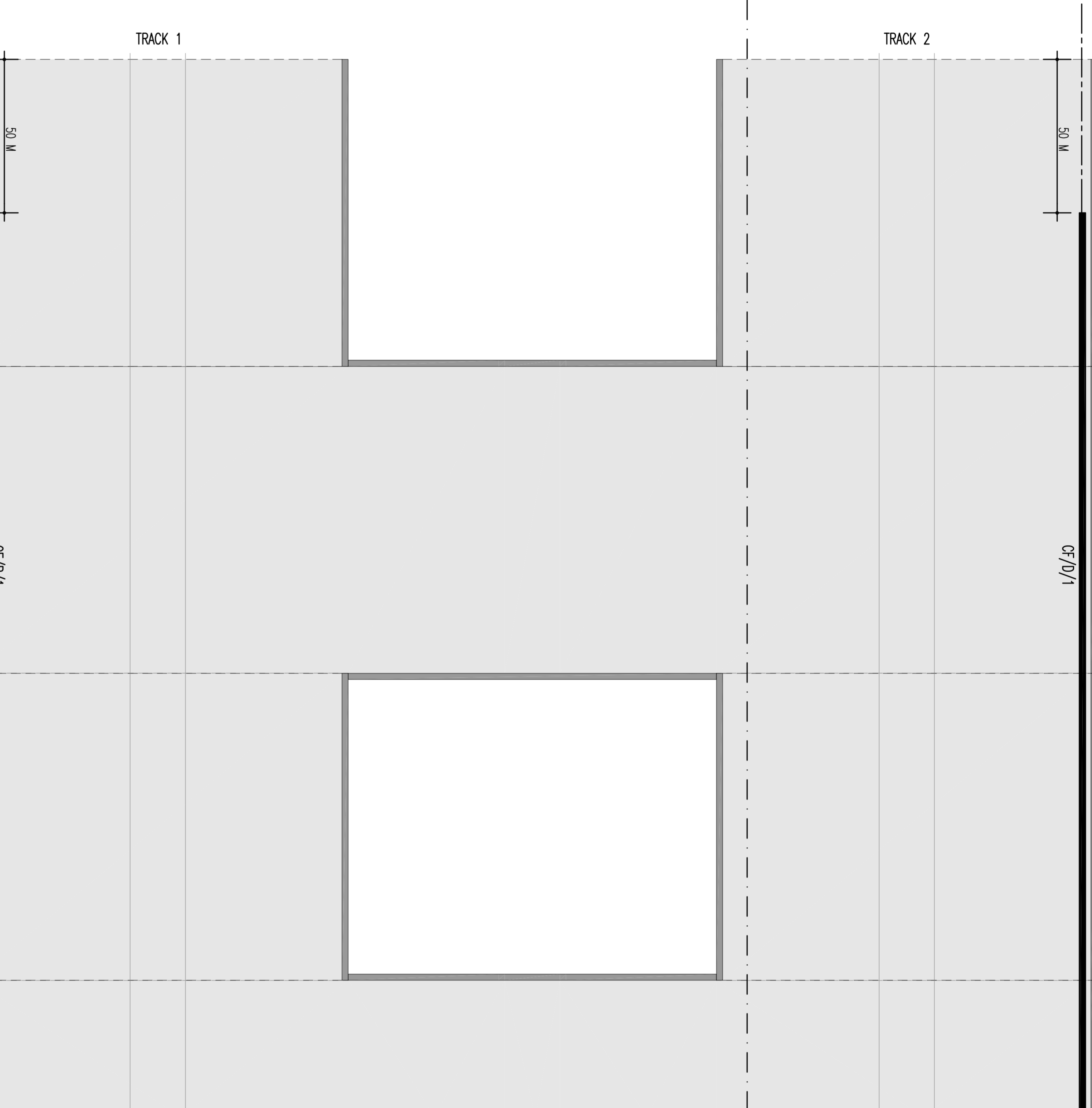
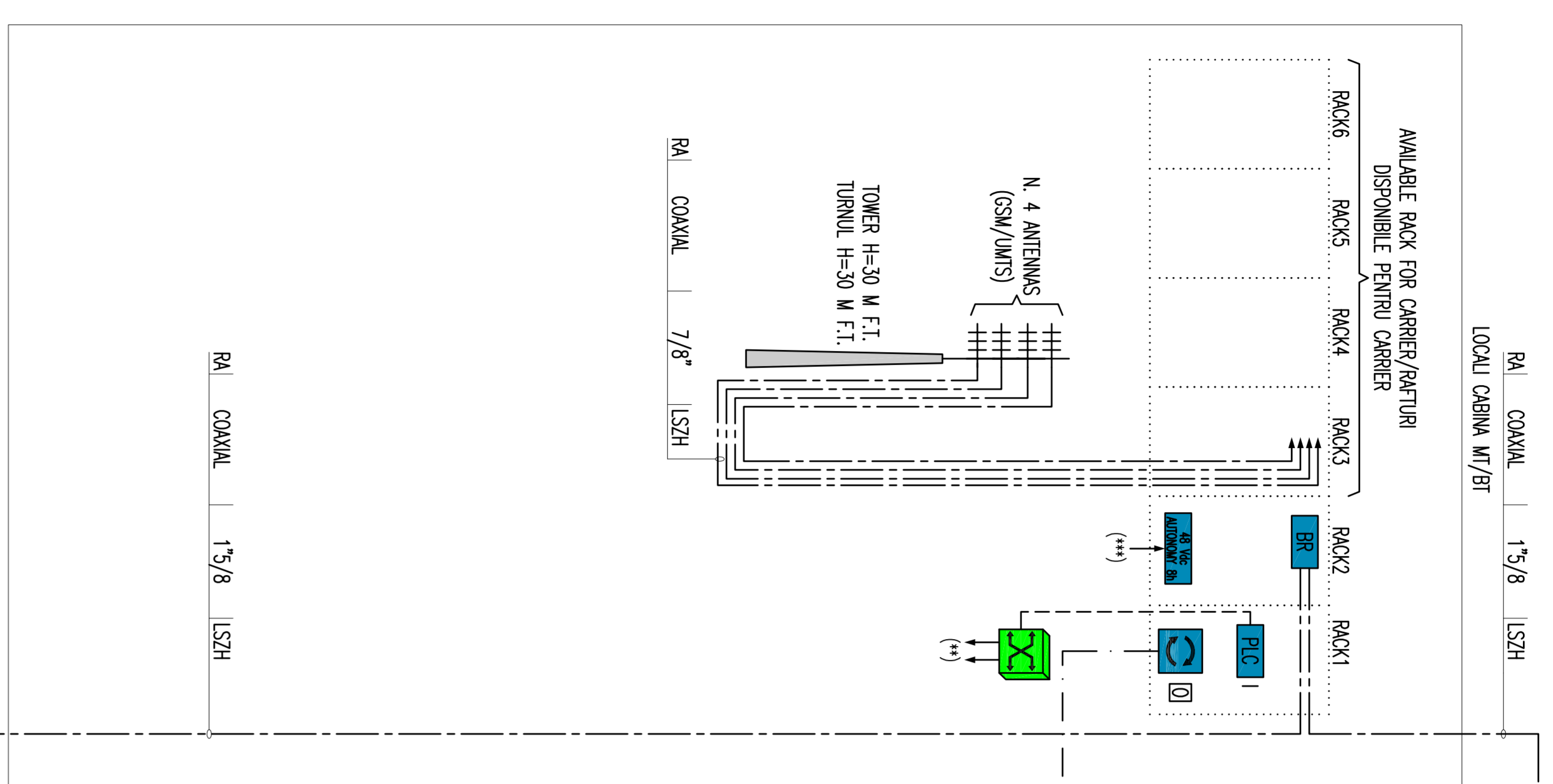


SAFE AREA/ZONA SIGURA



POSITION EQUIPMENTS LEGEND/
LEGENDA POZITIA EQUIPAMENTE

---/P/E SAFE AREA/ZONA SIGURA
---/D/ RACK Z/PASIA 2
---/P/ RACK 1/PASIA 1
---/1/ PROGRESSIVE NUMBERING/PROGRESSIVE NUMEROTAREA

RADIO SYSTEM SYMBOLS
SISTEMUL RADIO SIMBOLURI

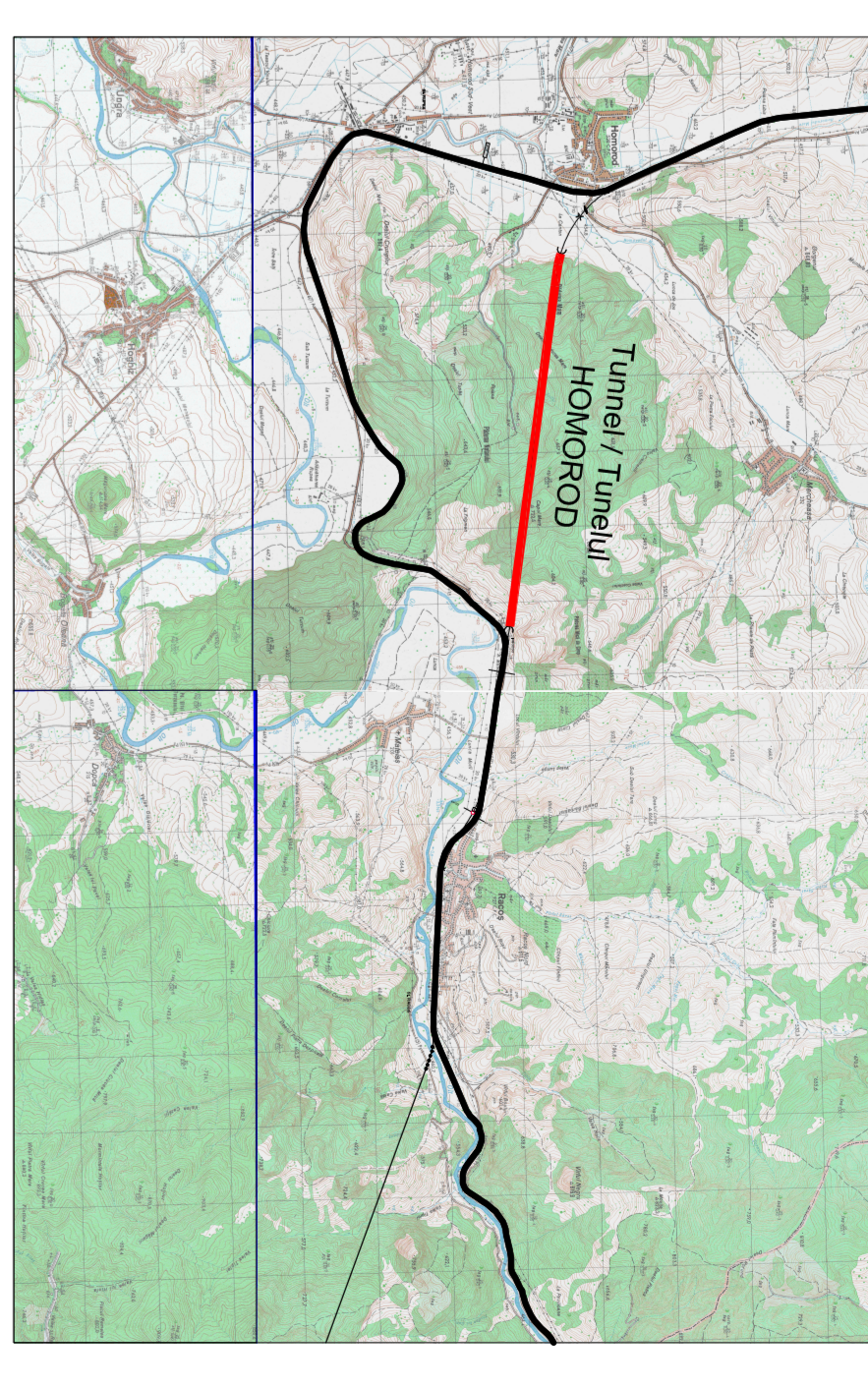
- RETICULATED COMMUNICATION NETWORK SIGNALING FIBER OPTIC
- FIBER OPTIC CABLE FOR RADIO SYSTEMS/CABLU OPTIC FIBRA OPTIC PENTRU SISTEME RADIO
- COAXIAL CABLE FOR RADIO SYSTEMS/CABLU COAXIAL PENTRU SISTEME RADIO
- ETHERNET NETWORK ON CABLE DRAIN OFF/ETHERNET PE CABLU CANI 6 UTP
- RAINWATER CABLE SLOT 15/8 CABLU RAINWATER SLOT 15/8
- UMS/CSM ANTENNAS/ANTENE UMS/CSM
- DEVICES OF SIGNAL DIFFUSION ON CABLE ROUTING(BRANCHED CSM)
- DISPOSITIVE DE DEZVALUIREA PE SIGNAL CABLE POINT
- FIBER OPTIC BOX LEADS/CASETA DUCHE FIBRA OPTICA
- PROGRAMABLE LOGIC CONTROLLERS (PLC)
- PROGRAMABILIZATORI LOGICI (PLC)
- POWER STATION 48 Vdc/STATION DE PUTERE 48 Vdc
- POWER SYSTEM PATCH/PASIV SYSTEM PATCH
- CABLU UTP CANI 6/CABLU UTP CANI 6
- FIBER OPTIC CABLE (MULTIMODE AND/OR SINGLEMODE)/CABLU DE FIBRA OPTIC (MULTIMODAL/UNIMODAL SI SINGLEMODE)
- ACTIVE EQUIPMENT/ANTENE ACTIVE
- SWITCH NODE/SWITCH NODE
- GENERAL SWITCH/SWITCH GENERAL
- SWITCH OF CROSSROADS/SWITCH DE INTERSECIE

ELECTRIC CABLES INDICATORS/
INDICATORI DE CABLURI ELECTRICE

- WV MEDIUM VOLTAGE/DEBITAJE TENSIE MIE
- BI(V) LOW VOLTAGE/DEBITAJE TENSIE (1) = 1000 V, (2) = 600 V, (3) 400/230 V
- PE PROTECTIVE CONDUCTOR/CABLU DE PROTECTIE
- FE DATA NETWORK/RETEA DE REZERVATA
- BO DATA NETWORK/RETEA DE REZERVATA
- CA ANTENNAS-ACCESS CONTROL/ANTENNAE-ACCESUL CONTROL
- RI FIRE DETECTOR/DE DETECTARE A INCENDIULUI
- NO; TV; NOC; RAOO CSAL



GENERAL PLAN / PLANUL GENERAL



CLIENT / CLIENT		 C.N.C.F. "C.F.R." - S.A.	
CONSULTANT / CONSULTANT		 Sasoft	
CONSULTANT / CONSULTANT		 OBERMEYER	
CONSULTANT / SUBCONSULTANT		 TECNIC	
Realizata la data de 15.05.2019. Seamana, partea componenta a contractului IV Part European, per Sectiunea I Biserica - Sigetia.			
Realizata la data de 15.05.2019. Seamana, partea componenta a contractului IV Part European, per Sectiunea I Biserica - Sigetia.			
Danuntire desen / Drawing Title : TUNEL/TUNELUL HOMOROD			
Raducomunicatiile sistemului de semnalizare		Proiect/Proiect	
Date / Date		15.05.2019	
Scara / Scale		1:07	
Confidanta / Confidential System		N/A	