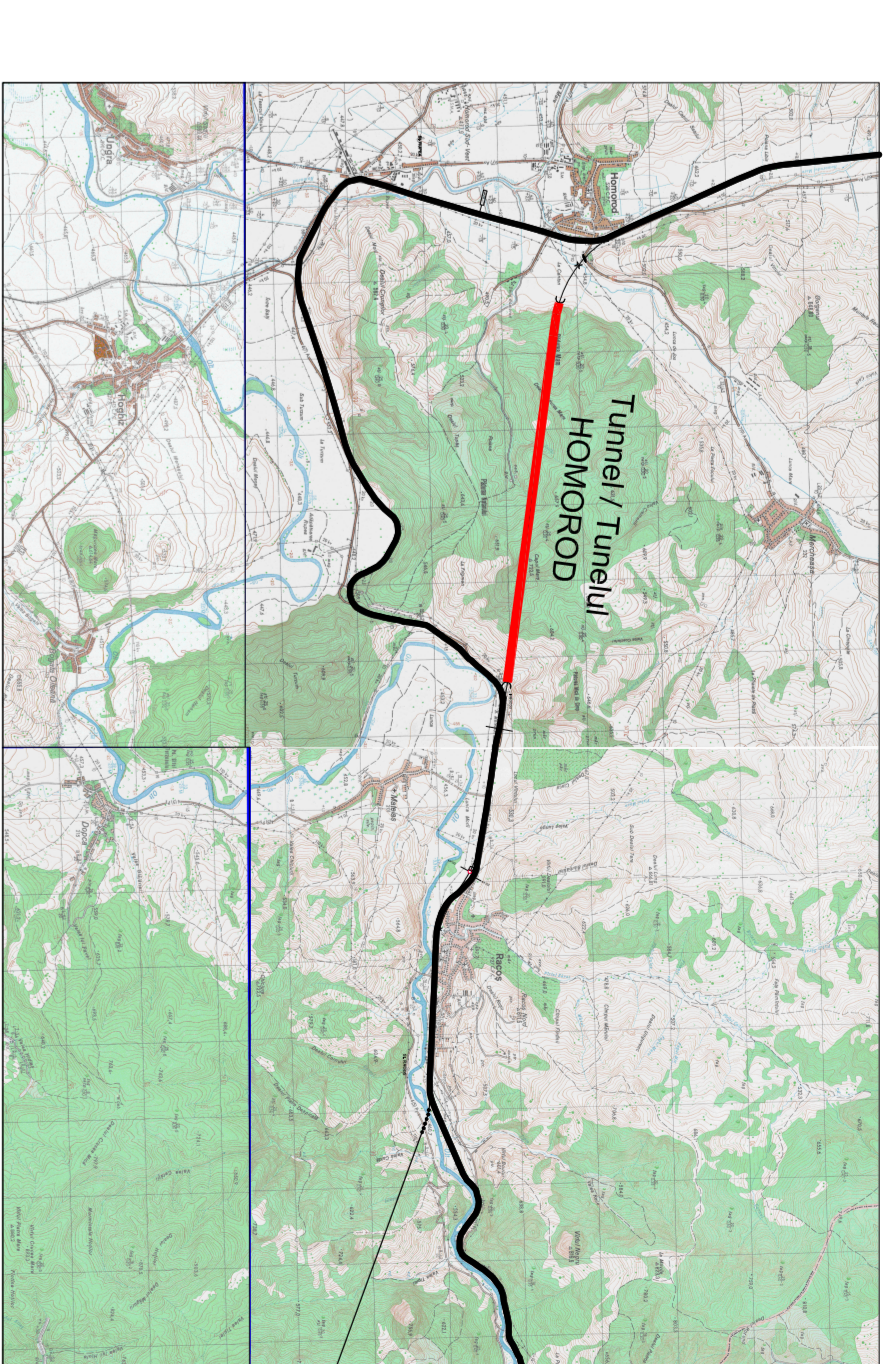
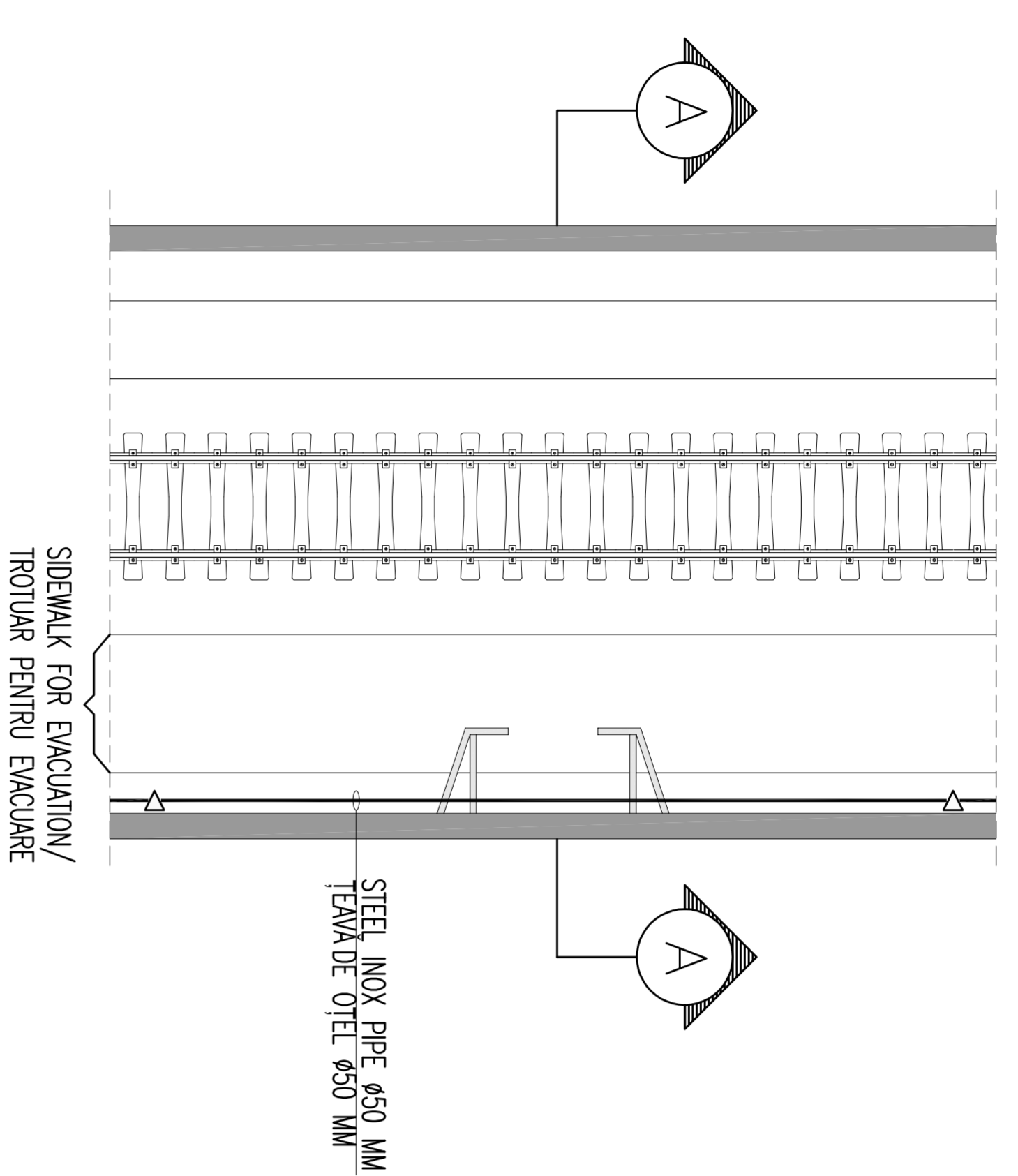


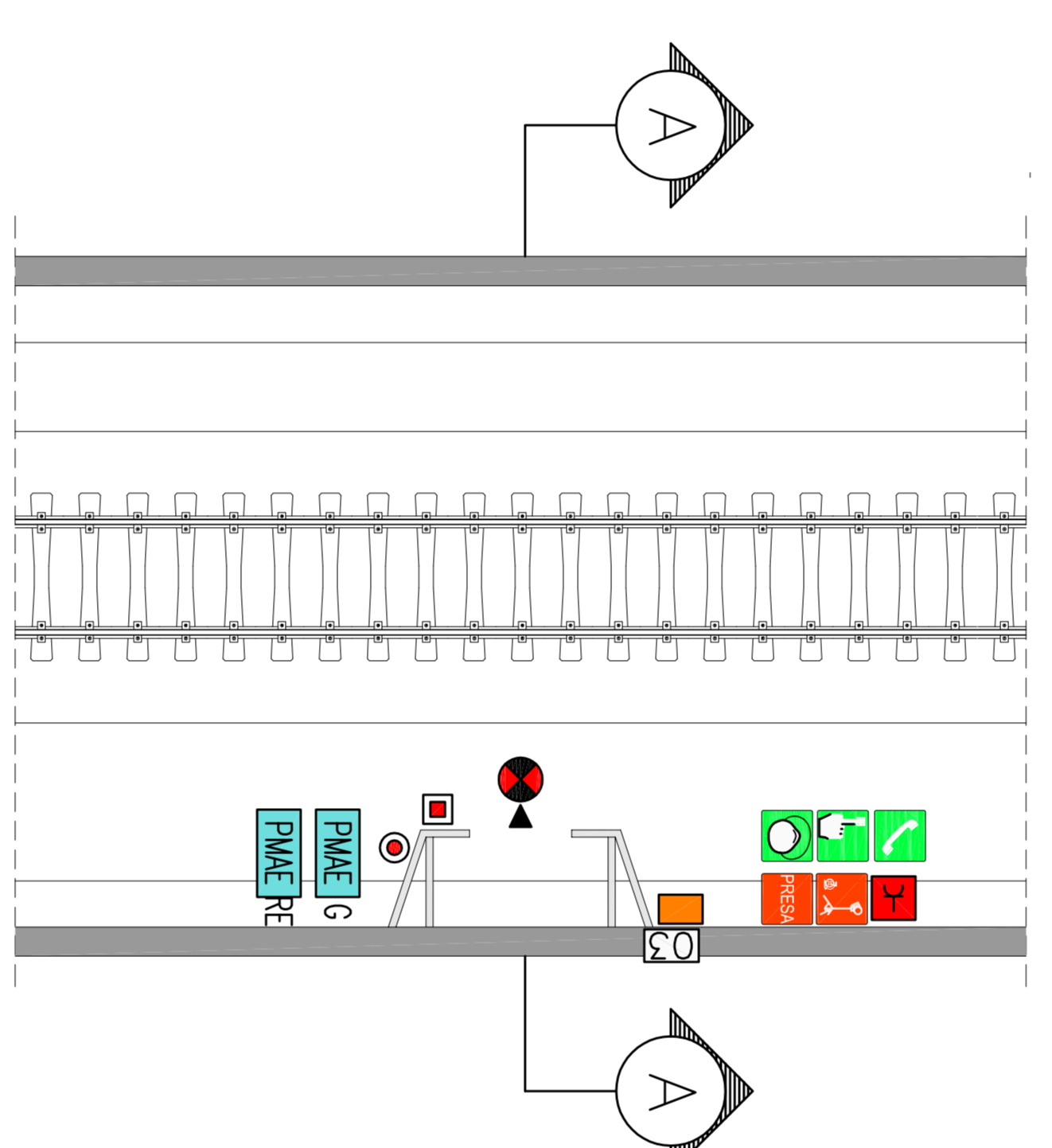
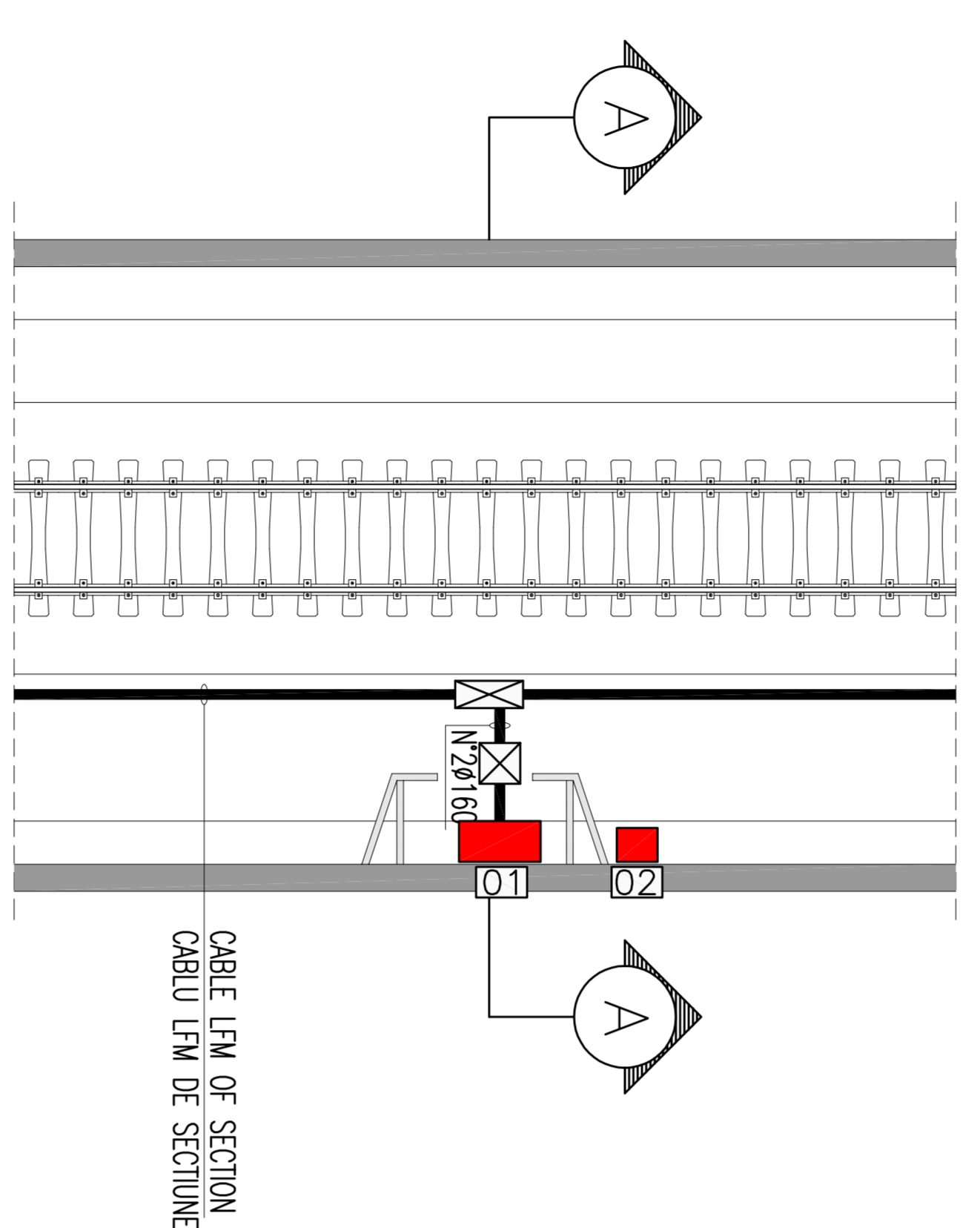
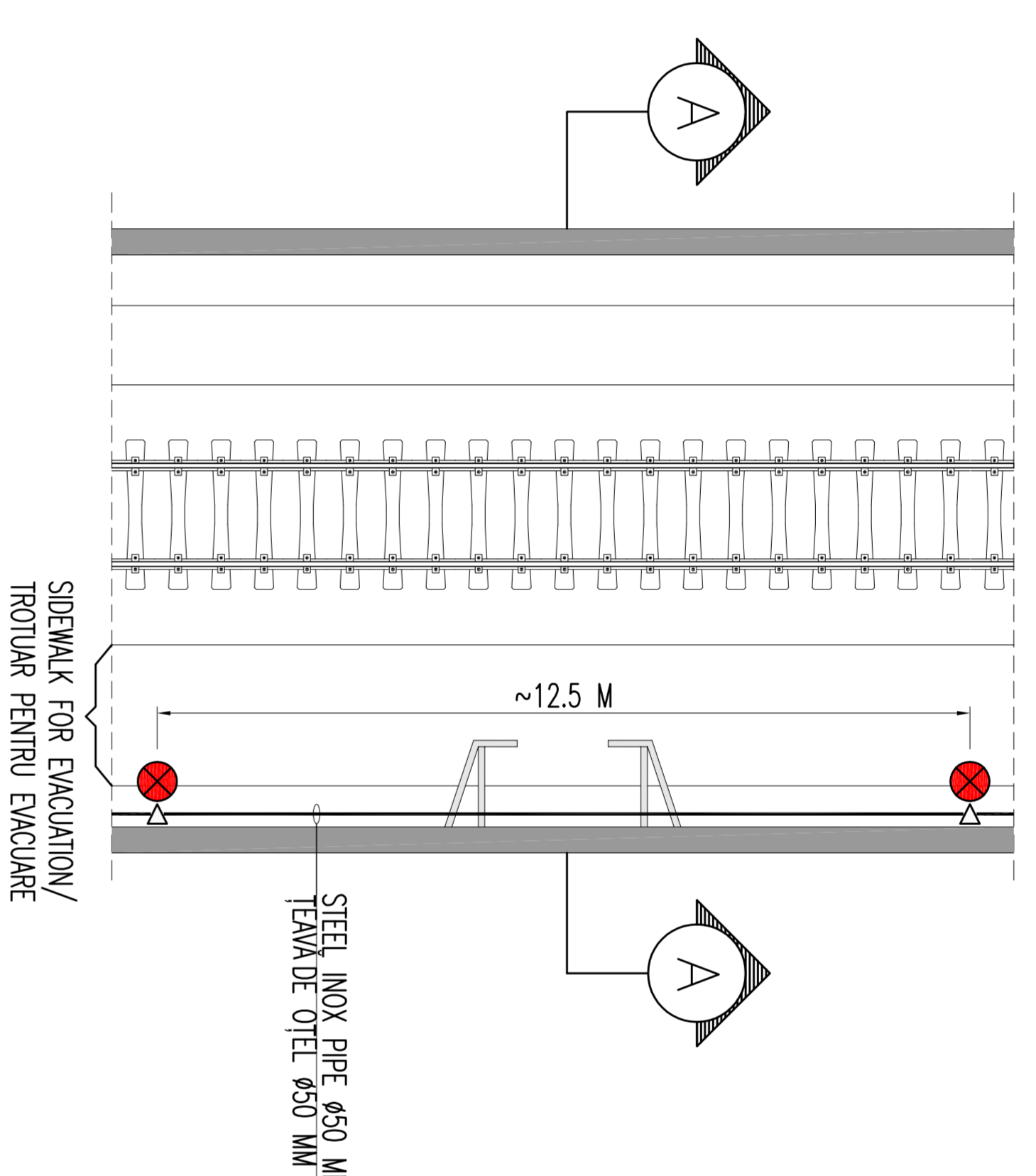
GENERAL PLAN / PLANUL GENERAL



PLANT WITH ELECTRICAL AND DUCTS EQUIPMENTS/
PLANTE CU ECHIPAMENTE ELECTRICE ŞI CONDUCTE



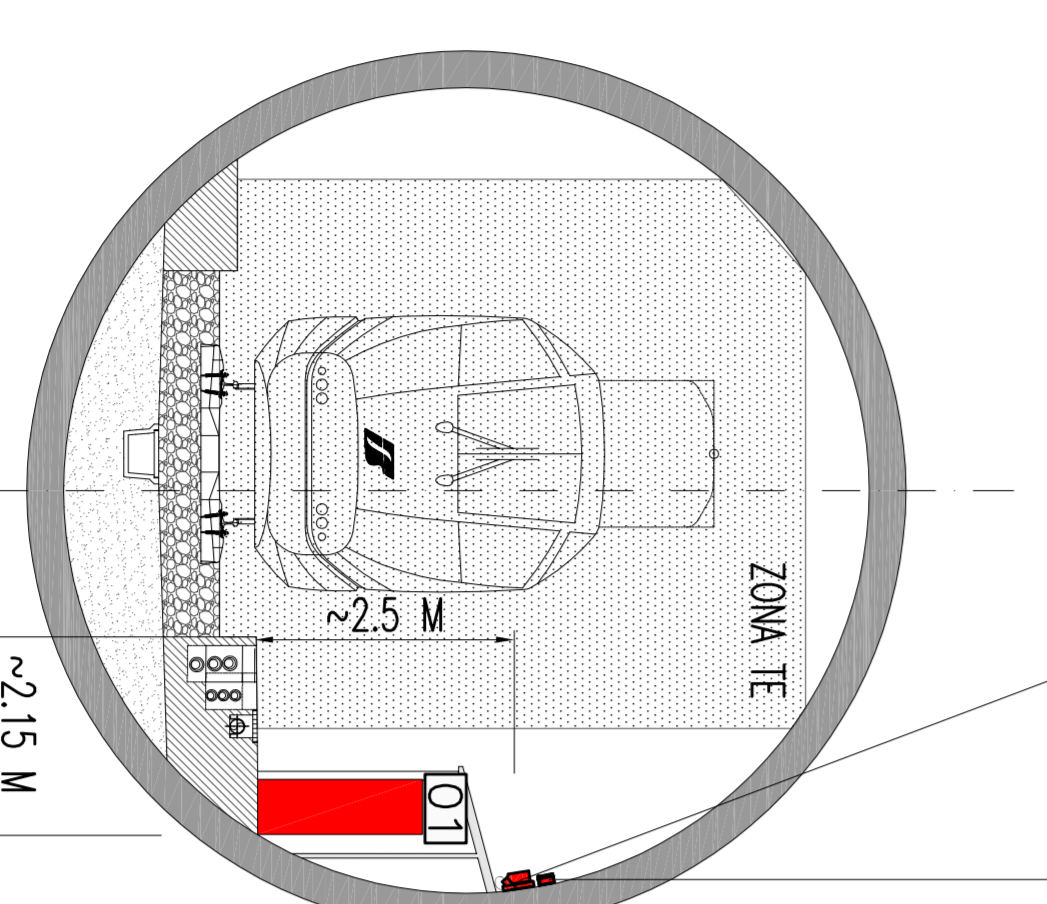
PLANT WITH LFM SYSTEMS/
PLANTE CU SISTEME LFM



SECTION A-A/SECŢIUNE A-A

LIGHTING FIXTURE WITH LAMP 1x18W FOR EMERGENCY LIGHTING IN TUNNEL/
Corpuri de iluminat cu lampă pentru iluminat 1x18W de urgenţă în tunelul

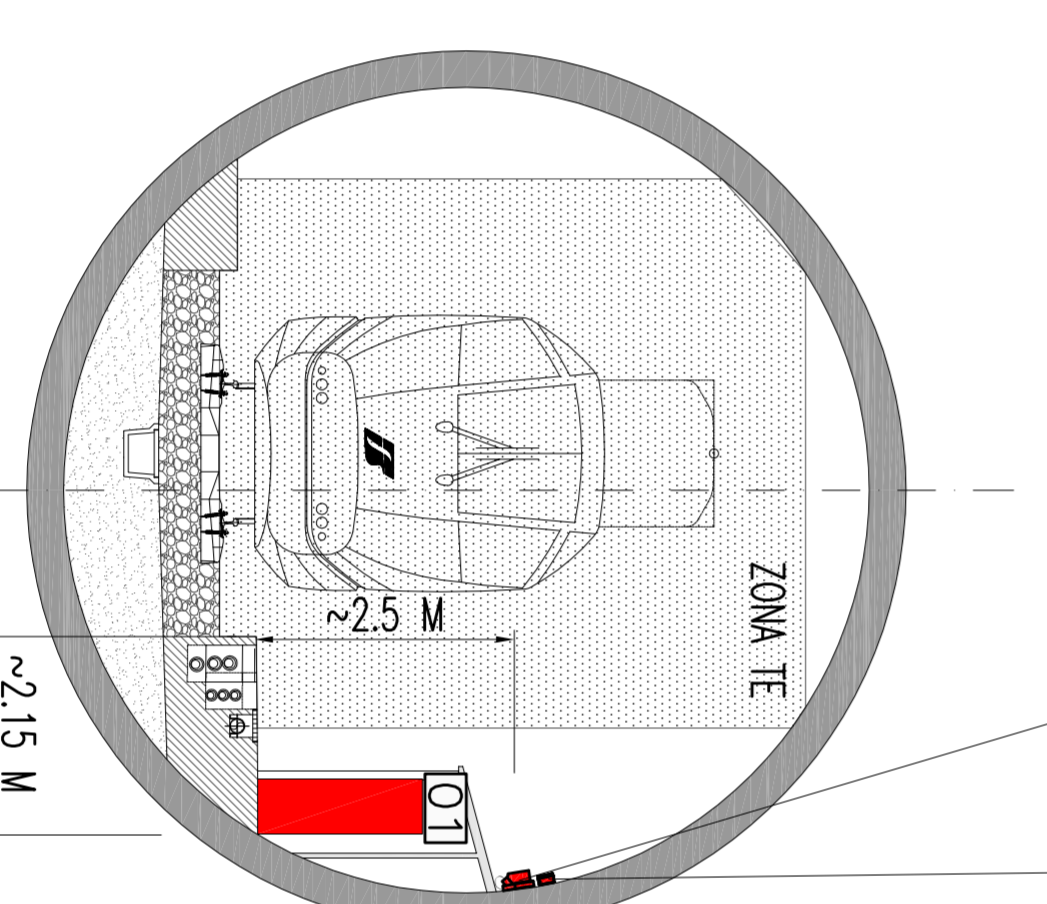
BOX TYPE "B"
BOX TYPE "B"



SECTION A-A/SECŢIUNE A-A

LIGHTING FIXTURE WITH LAMP 1x18W FOR EMERGENCY LIGHTING IN TUNNEL/
Corpuri de iluminat cu lampă pentru iluminat 1x18W de urgenţă în tunelul

BOX TYPE "B"
BOX TYPE "B"



EQUIPMENT LEGEND/UTILAJE LEGENDA

021	PANEL OF SECTION GAT/DOOR DE SECŢIUNE GAT
022	HANDS FREE BEING AMPLIFIED
023	COLUMNS/COLOANE TELUS

SYMBOLS LEGEND/LEGENDA SIMBOLURI

☒	POZITIONARE FIABILE TYPE FLOOR RECESSED/POZIȚIONARE ÎNSTRĂBUT EMI
⚡	WELL/LINE
⚡	PERTELE ASCUNDE/PERTELE ASCUNDEA
🔧	PERIPHERAL DEVICE/PERIFERĂ DESCOPERITIV MAC
🔧	E - EMERGENCY LIGHT BATTERY/LUMINĂ LUMINA BĂTUTULUI
🔧	G - GENERAL LIGHTING LAMP/LUMINĂ GENERAL LUMPA
🔧	R - LAMPS OF REFERENCE BRASS-NICHE/LAMP DE REFERINȚĂ BRASS-NIȘA
🔧	NZ SOCKETS 230 V FOR FIRE BROCADE/NȚ PRIZE 230 V PENTRU PORNIRE PULSANTE CON LAMPADA SPA
🔧	PULSANTE CON LAMPADA SPA IN NIȘAȘII
🔧	LIGHT FIXTURES 1x18 W EMERGENCY LIGHTING/PROGRAME DE LUMINA 1x18 W
🔧	LUMINĂ DE URGENȚĂ
🔧	LIGHT FIXTURES 1x18 W REFERENCE LIGHTING/PROGRAME DE LUMINA 1x18 W
🔧	LUMINĂ DE REFERINȚĂ
🔧	LIGHT FIXTURES 1x18 W GENERAL LIGHTING/PROGRAME DE LUMINA 1x18 W
🔧	LUMINĂ GENERAL
🔧	JUNCTION BOX TYPE A/JUNCTION BOX TYPE A
🔧	JUNCTION BOX TYPE B/JUNCTION BOX TYPE B
🔧	EMERGENCY EXIT SIGN/INSCHERE ESCAPE DE URGENȚĂ
🔧	EMERGENCY TELEPHONE SIGN/INSCHERE TELEFON DE URGENȚĂ
🔧	FILTER MASKS SIGN/INSCHERE MASĂ FILTRU
🔧	BUTTON EMERGENCY LIGHTS SIGN/INSCHERE URGENȚĂ BĂTUT LUMINI
🔧	HERBANT SIGN/INSCHERE HERBANT
🔧	HERBANT SIGN/INSCHERE HERBANT
🔧	ELECTRICAL PLUG TO RESCUE TEAMS/PRIZĂ ELECTRICAL PENTRU A SALVA URGENȚĂ
🔧	EMERGENCY EQUIPMENT TO RESCUE TEAMS/ECHIPAMENT DE URGENȚĂ PENTRU A SALVA
🔧	ON/OFF ALARM POINT WITH BUZZER/ANUNȚUL ACTIVARE- OPRIȚĂ ALARMA CU BUZZER
🔧	ACCESS CONTROL AND INTRUSION DETECTION UNIT/CENTRAL DE CONTROL
🔧	ACCESS SI DE DETECTIE A INTRUZIUNILOR
🔧	DUAL TECHNOLOGY DETECTOR/DETECTORE DUAL TECHNOLOGIE
🔧	SMOKE DOOR DETECTOR/DETECTORE SMOKE
🔧	SMOKE DETECTION SENSOR/DETECTORE FUM SENSOR
🔧	CENTRAL LOCAL TECHNICAL FIRE DETECTION-BRASS-NICHE/CENTRAL LOCAL DE DETECTIE A INCENDIULUI-BRASS-NIȘA
🔧	SPEAKER HORN WITH POWER P=10 W/PUZZOR HORN CU PUTERE P=10
🔧	TELEPHONE COLUMN TELUS/TELEFON CULOANE TELUS

CLIENT / CLIENT
C.N.C.F. "C.F.R." - S.A.

CONSULTANT / CONSULTANT
R. LUZZI
C. GEMELLI
P. ANDRÈ

SUBCONSULTANT / SUBCONSULTANT

GOVERNUL ROMÂNIEI
PROIECT FINANȚAT DE UNIUNEA EUROPEANĂ
PRIN INTERMEDIUL MECANISMULUI DE FINANȚARE EUROPEANĂ

CONDUCĂTOR DE PROIECT / PROJECT/PROIECT
2022/57/2022
P.11. / T.1.

CLIENT / CLIENT
C.N.C.F. "C.F.R." - S.A.

CONSULTANT / CONSULTANT
R. LUZZI
C. GEMELLI
P. ANDRÈ

SUBCONSULTANT / SUBCONSULTANT

CONDUCĂTOR DE PROIECT / PROJECT/PROIECT
2022/57/2022
P.11. / T.1.

CONDUCĂTOR DE PROIECT / PROJECT/PROIECT
2022/57/2022
P.11. / T.1.

D									
C									
B									
A									
0									

Condusator / Conducator System

Scale / Scală

1:07

1/2

E A S I 0 1 C 1 2 L X T S 2 0 6 6 0 1 4 0