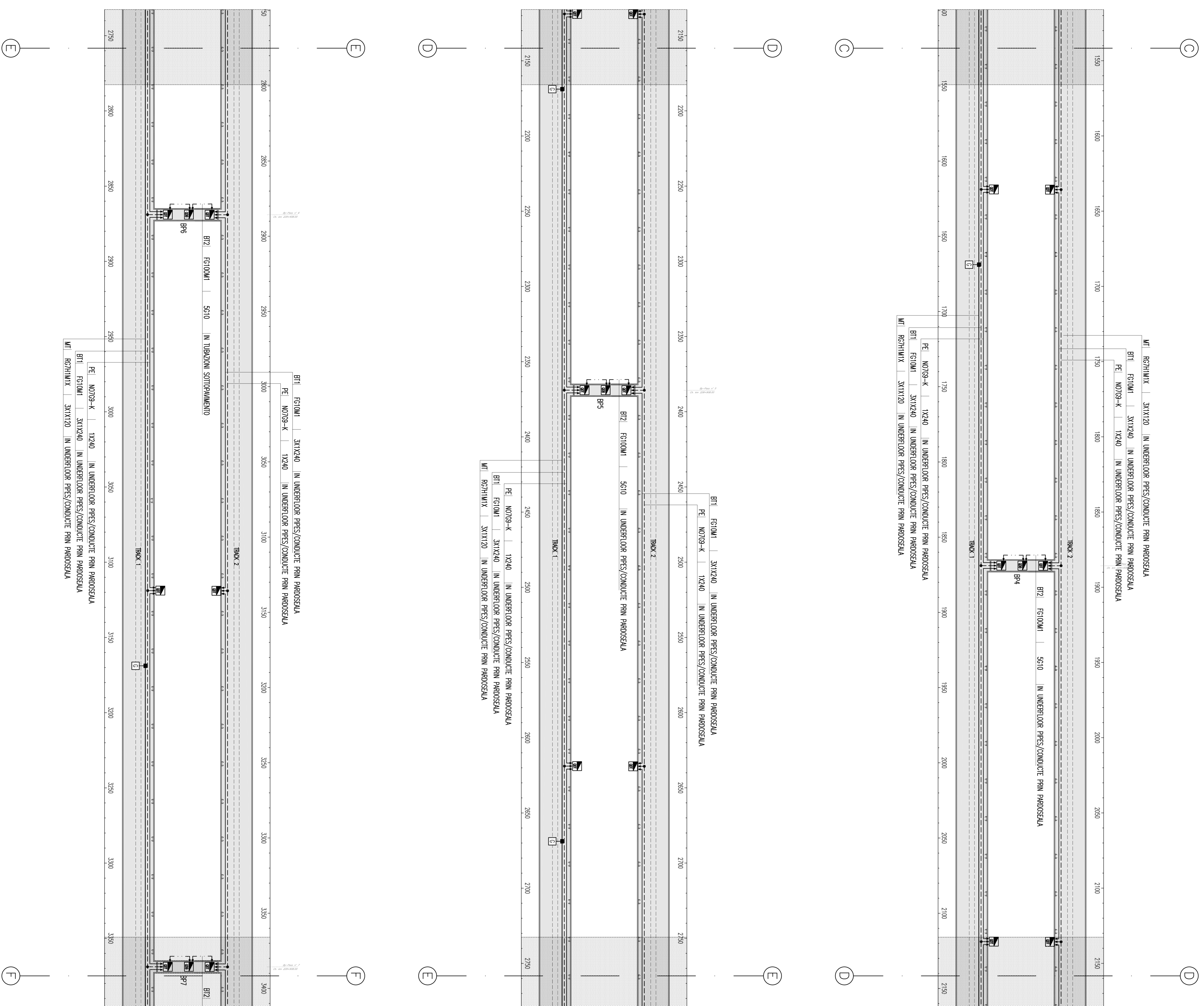
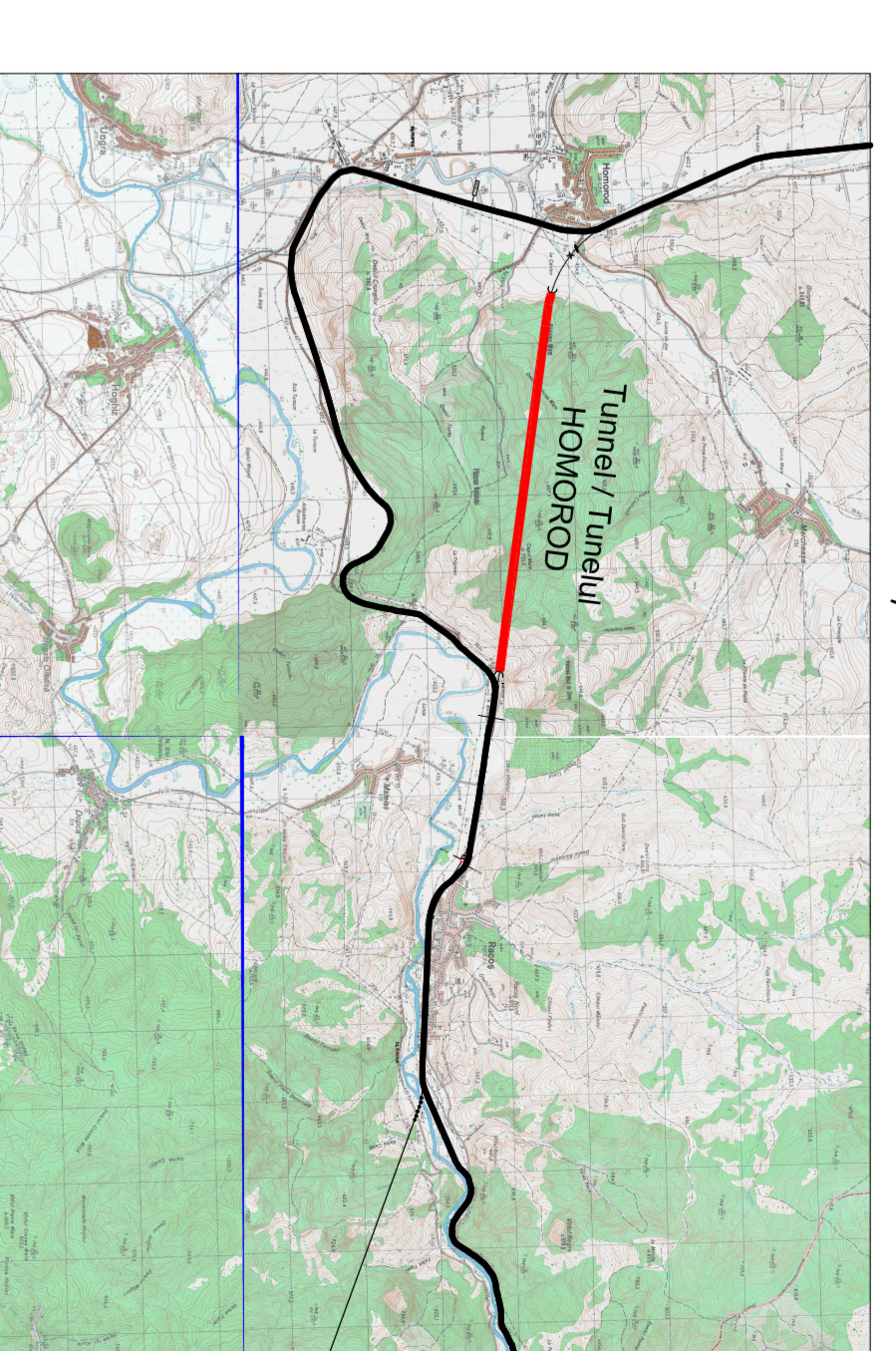


GENERAL PLAN / PLANUL GENERAL

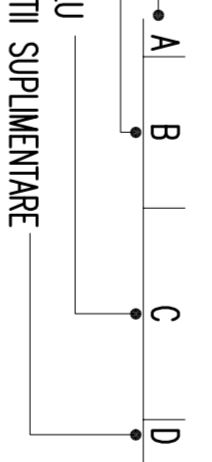


	LOW VOLTAGE NETWORK/REȚEA DE JOASA TENSIUNE (BT1), 1000 V
	SECURITY LEAD NETWORK/REȚEA CONDUCE DE SECURITATE
	MEDIUM VOLTAGE NETWORK/REȚEA DE MARE TENSIUNE (MT) 20 kV

	ELECTRICAL PANEL/CABU ELECTRICE
	ELECTRICAL PANEL SECTION/CABU ELECTRICE SECTION
	ELECTRICAL PANEL BY-PASS/CABU ELECTRICE BY-PASS
	MARKER FOR JUNCTION CABLE/MARKER PENTRU JUNCTION CABU

INDICATOR CABLE/INDICATOR CABLE

A	SISTEM/SISTEM
B	CONDUCTOR OF PROTECTION/CONDUCE DE PROTECTIE
C	CONDUCTOR OF PROTECTION/CONDUCE DE PROTECTIE
D	ADDITIONAL INFORMATION/INFORMAȚII SUPPLEMENTARE



NOTE:  
- AREA SHOWN IN THE NEXT / PREVIOUS SHEET  
- ZONA PREZENTATA IN PACHEȚUL URMATOR / ANTERIORA

<b>GOVERNUL ROMÂNIEI</b>	<b>C.N.C.F. "C.F.R." - S.A.</b>	
<b>ROMANIA GOVERNMENT</b>		
<b>PROIECT FINANȚAT DE UNIUNEA EUROPEANĂ</b>		
<b>SPONSOR FINANȚAT DE UNIUNEA EUROPEANĂ</b>		

<b>CLIENT / CLIENT</b>			
<b>CONSULTANT / CONSULTANT</b>			

Approved by: Project manager / Ing. Stelian Bălan	Approved by: Section Chief / C. Gheorghiu	Date 2023/07/26
Checked by: Tunnel Engineer Ing. Andrei	Checked by: Section Chief / C. Gheorghiu	Date 2023/07/26
Drawn by: Designer Ing. Andrei	Approved by: Section Chief / C. Gheorghiu	Date 2023/07/26

**DESCRIPTION / DESKRIBȚIE**  
Realizatiia trasei de cablu rețea Bogșor - Sârnela, parte componentă a conturului IV Pan European, pe Secțiunea I Bogșor - Sârnela.

**REVISIONS / MODIFICĂRI**  
Revizuit de: P. Andoș  
Data: 2023/07/26

**APPROVED / APROBAT**  
Stelian Bălan

**DATE**  
Scale: 1:100

EA	5	1	C	1	2	L	X	T	S	2	0	6	9	1	7	0
----	---	---	---	---	---	---	---	---	---	---	---	---	---	---	---	---