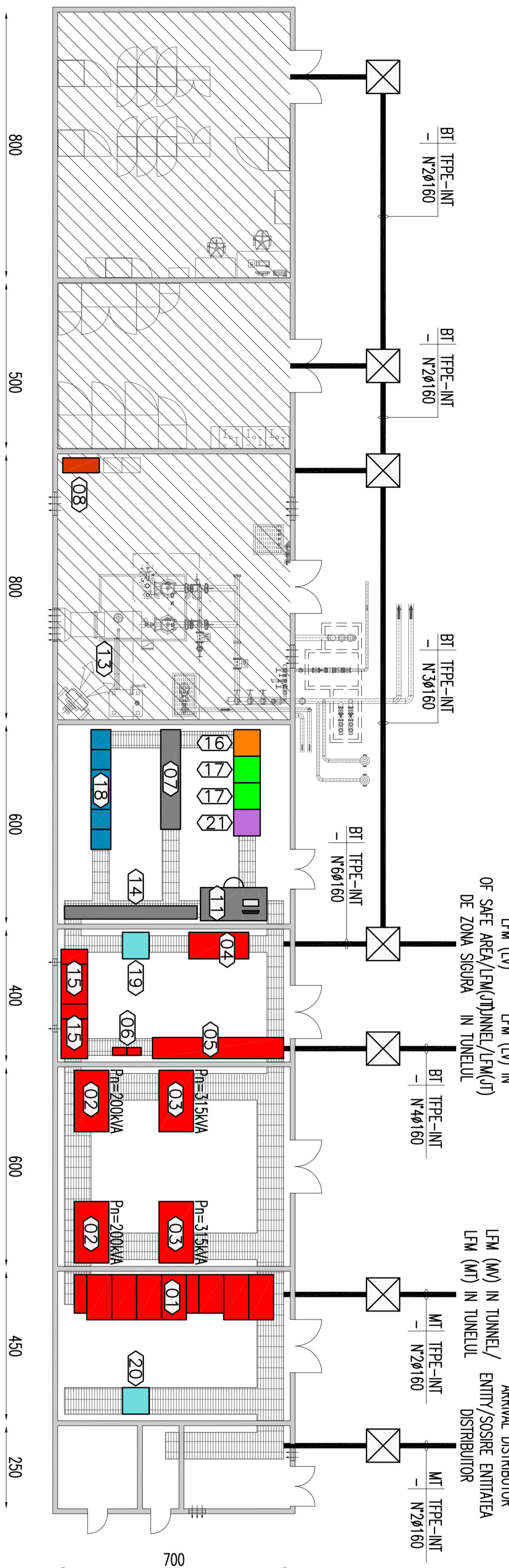
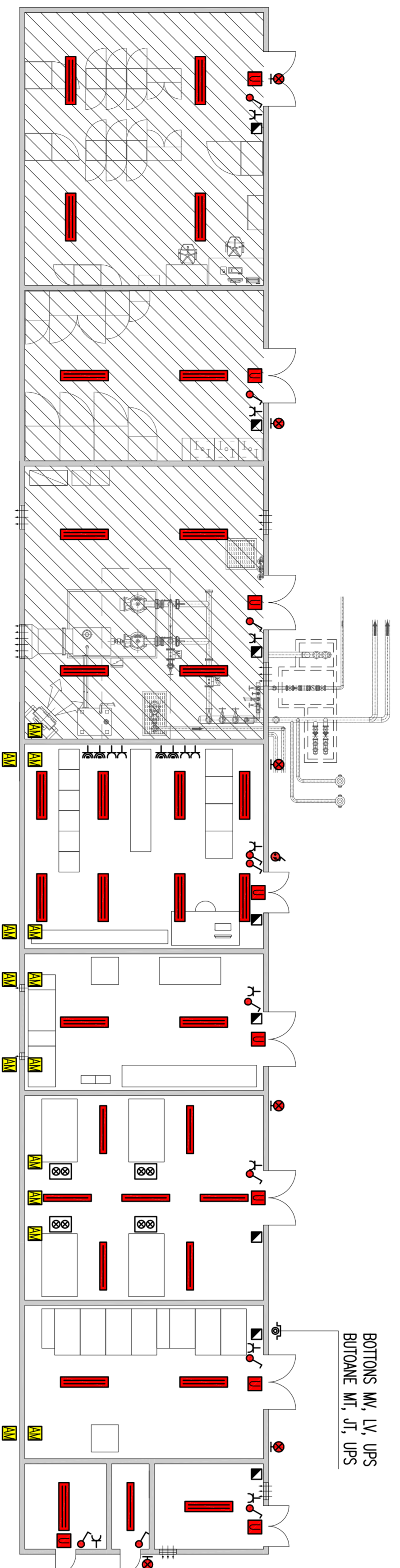


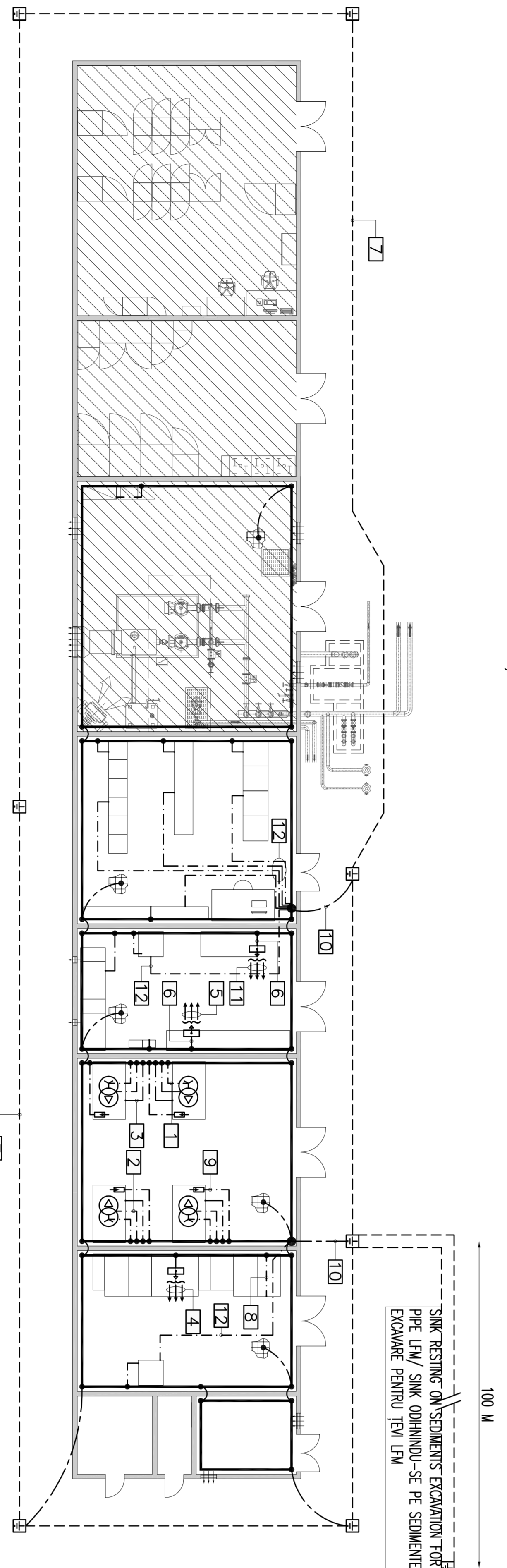
DISPOSAL OF ELECTRICAL EQUIPMENTS AND DUCTWORK/
DISPOZITIE ECHIPAMENTE ELECTRICE SI CONDUCTIE



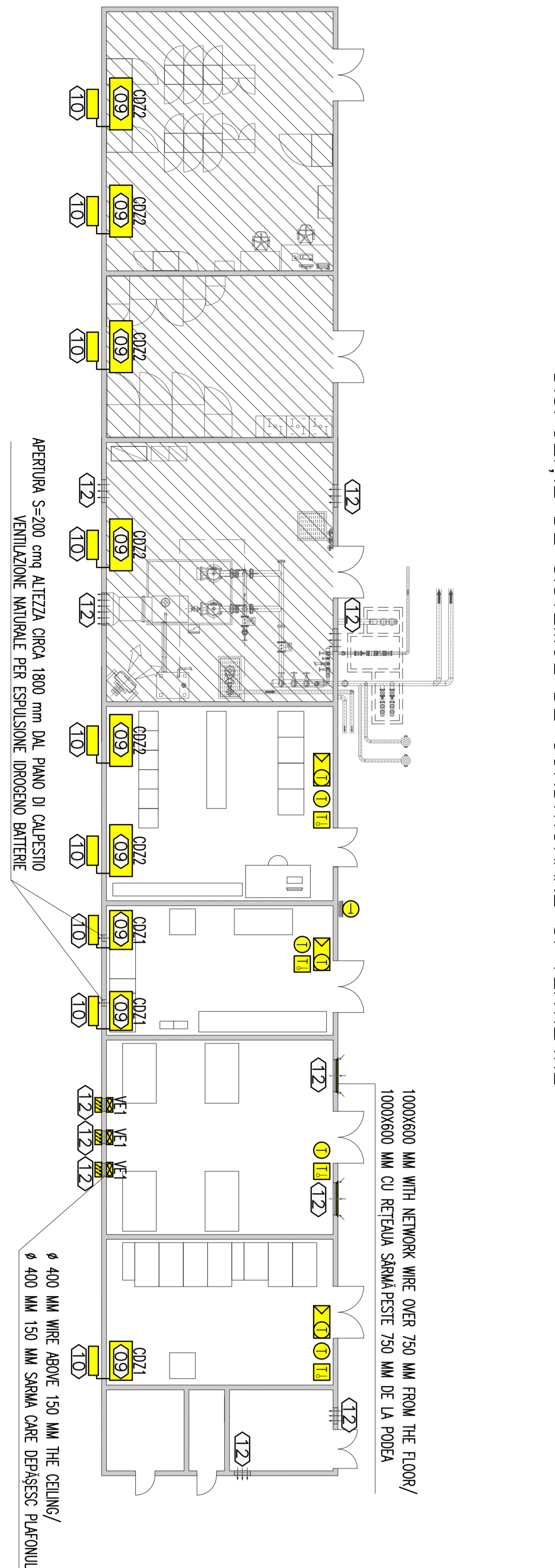
DISPOSAL OF LIGHTING DRIVING FORCE SYSTEMS/
DISPOZITIE DE SISTEMUL DE LUMINA FORTA MOTRICE



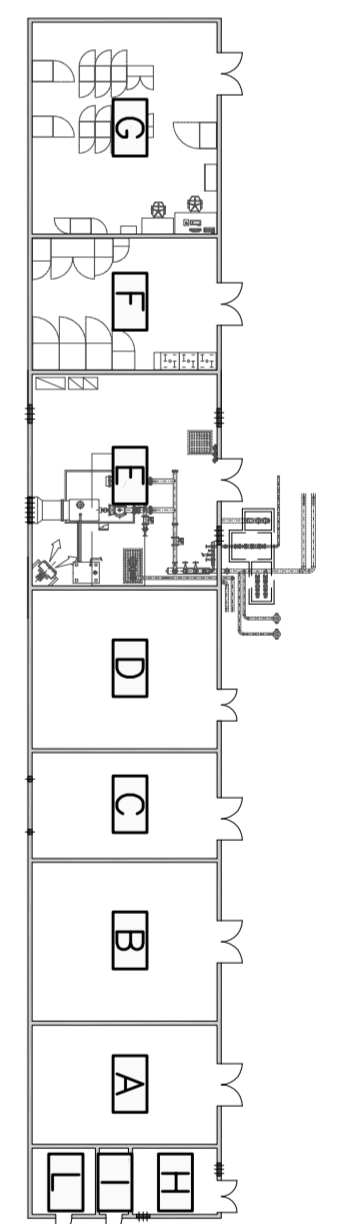
DISPOSAL OF GROUNDING SYSTEM/
DISPOZITIE DE SISTEM PAVANT



DISPOSAL OF CONDITIONING AND VENTILATION SYSTEMS/
DISPOZITIE DE SISTEMUL DE CONDITONARE SI VENTILATIE



CABIN LOCAL LEGEND/LEGENDA LOCAL CABINA

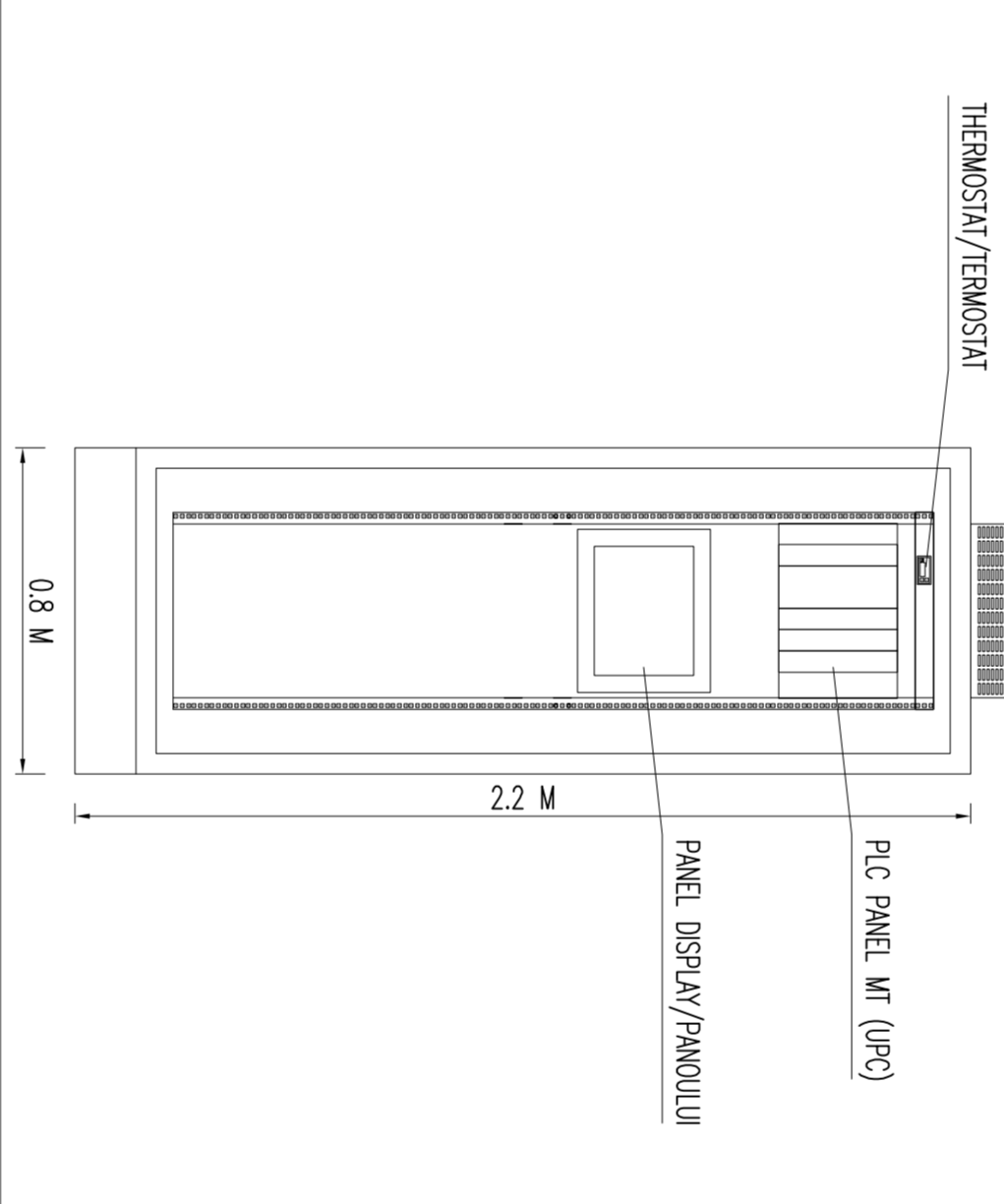


- LA MW LOCAL/LOCAL MT
- LB TRANSFORMERS LOCAL/LOCAL TRANSFORMATOR
- LC LV LOCAL/LOCAL JT
- LD TELECOMMUNICATIONS LOCAL/LOCAL TELECOMUNICATII
- LE PREVENTION FIRE LOCAL/LOCAL LA TOR
- LF CONTROL EQUIPMENTS LOCAL/LOCAL ECHIPAMENTE
- LG EQUIPMENTS LOCAL/LOCAL ECHIPAMENTE
- LH POWER ENTRY LOCAL/LOCAL ENTRATA FORNITOR
- LI MEASURES LOCAL/LOCAL MASURE
- LJ WAREHOUSE LOCAL/LOCAL DEPOZIT

Indicator cable ducts/cablu indicator

- A - LEGEND NETWORKS / LEGENDA RETELE
- B - NETWORKS / REZELE
- C - LEGEND EQUIPMENT / CHEIE DE INSTALARE
- D - SETA NUMBER / NUMARUL SETURII
- E - NUMBER AND DIMENSIONS (mm) / NUMARUL DIMENSIUNII (mm)

CABINET RACK 19" WITH FRONT-END EQUIPMENT LFM
CABINET RACK 19" ECHIPAMENTE AUTOMATIZARE Q.M.T



EQUIPMENTS LEGEND/LEGENDA ECHIPAMENTE

- (C01) MEDIUM VOLTAGE/MEDIA TENSIUNE Q.M.T
- (C02) TRANSFORMER M/F BT 20KV/1KV
- (C03) TRANSFORMER M/F BT 20KV/0.4KV
- (C04) SPT AREA PANEL/CABLU DE ZONA SCURT (C04)
- (C05) LOW VOLTAGE PANEL/CABLU DE ZONA TENSIE (Q.M.T)
- (C06) POWER FACTOR CORRECTION/CABLU DE FACTOR Q.M.F
- (C07) CABINET FOR SYSTEM GSM-R, GSM, SIP/L
- (C08) FIRE PUMP PANEL/CABLU POMPARE DE INCENDIU(Q.M)
- (C09) OUTER UNIT OF AIR CONDITIONING/UNITATEA EXTERIOARA DE CLIMATIZARE
- (C10) OPERATOR'S STATION/STARE DE OPERARE
- (C11) OPENING FOR HEAVILY/DESCHISURE PENTRU REZERVUA
- (C12) ELECTRIC HEATER/AN/PAVA TERMO-ELECTRICE
- (C13) EQUIPMENTS SIS AND CABLE ECHIPAMENTE SIS SI CABINET CABLU UPS
- (C14) CABINET RACK 19" EQUIPMENTS FIRE EMERGENCY TELEPHONE AND DATA NETWORK
- (C15) OPERATORS/CABINET RACK 19" CONVERTOR OPTIC-COPTIC SI ECHIPAMENTE REZEA FAX
- (C16) CABINET RACK 19" WITH FRONT-END EQUIPMENTS
- (C17) CABINET RACK 19" WITH FRONT-END EQUIPMENTS
- (C18) CABINET RACK 19" WITH FRONT-END EQUIPMENTS
- (C19) CABINET RACK 19" WITH FRONT-END EQUIPMENTS
- (C20) CABINET RACK 19" WITH FRONT-END EQUIPMENTS
- (C21) CABINET RACK 19" WITH FRONT-END EQUIPMENTS

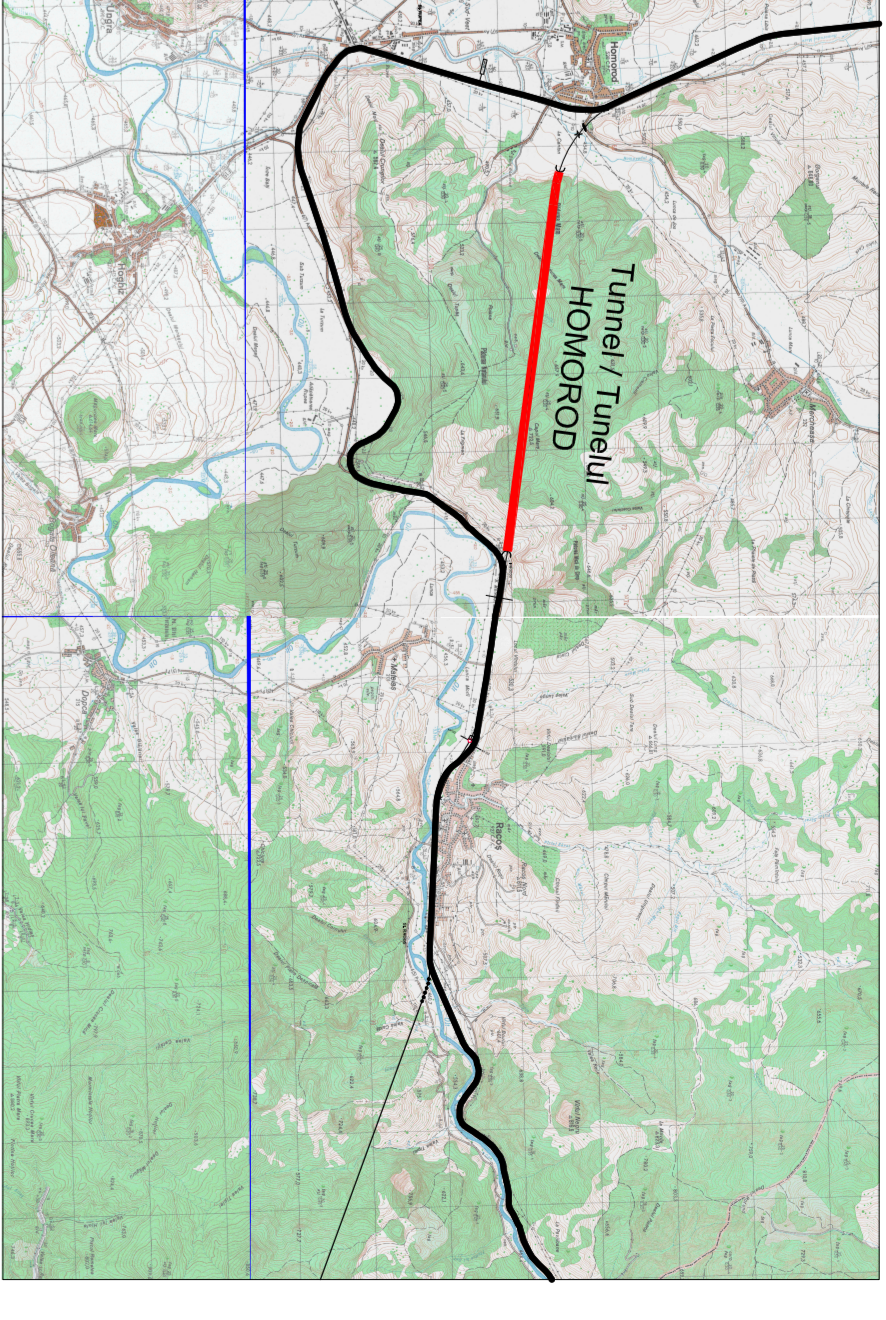
LEGENDA SIMBOLII
IMPIANTUL LFM IN CABINA

- 1 POLE SWITCH/POLE SWITCH
- 2 RITTON TO ACCESS SERVICE WITH SAFETY GASS
- 3 RITTON PENTRU SERVICIU ACCES CU SIGURANTA SUBSTANTA
- 4 CABLE SOCKET 10/16 A WITH PROTECTION LEAD NETWORK STANARD
- 5 PROTA C04L10/16 CU PLUMB DE PROTECTIE (STANARD DE RETEA)
- 6 CABLE SOCKET P20 UNIVERSAL 16 A WITH PROTECTION CONDUCTOR
- 7 (CONDUCTOR NETWORK RESISTOR)
- 8 PROTA P20 CABLE UNIVERSAL 16 A CU CONDUCTOR DE PROTECTIE (CONDUCTORUL REZEA RESISTIV)
- 9 DRIVING FORCE SOCKETS PANEL/CABLU PRIZEL DE FORTA MOTRICE (MT 3PH+NT 16 A + NT 1PH+NT 16 A)
- 10 LUMINANCE DEVICE WITH UNDER FLUORESCENT LAMPS FOR WORKING SURFACE - 1x26 W
- 11 DISPOZITIV DE LUMINAT CU LAMPURI FLUORESCENTE LAMPE PENTRU SUPRATA DE MUNCA - 1x26 W
- 12 LUMINANCE DEVICE WITH UNDER FLUORESCENT LAMPS FOR WORKING SURFACE - 2x26 W
- 13 DISPOZITIV DE LUMINAT CU LAMPURI FLUORESCENTE LAMPE PENTRU SUPRATA DE MUNCA - 2x26 W
- 14 LUMINANCE DEVICE WITH COMPACT FLUORESCENT LAMPUR WALL MOUNT-1x18 W
- 15 DISPOZITIV DE LUMINARE CU FLUORESCENTE COMPACTE LAMPUR MONTATE DE PERETE-1x18 W
- 16 APPARATUS SINCE FOR SIGNAL OUTPUT OF SAFETY WITH PROTOFORM
- 17 APPARAT SINCE PENTRU SIGNALUL DE SIGURANTA CU PROTOFORM
- 18 STATE SIGNAL OF TRANSFORMER/SIGNAL SINA DE PROTECTIE
- 19 THERMIGHT
- 20 WALL WITH VENTHOLE IN CLS 1000x1000 MM/PERE CU VENTHOLE IN CLS 1000x1000 MM
- 21 POINT POWER PLANT MECHANICAL UTILITIES (VENTILATION, AIR CONDITIONING, HEATERS)
- 22 (SINO) TO RECOVER WING INCLINED TO VERTICAL INSTALLATION/PERE DE RECUPERARE UNGHIIUARI AERI INSTALAREA VERTICALA
- 23 AIR EXTRACTOR/EXTRACTOR DE AER
- 24 TEMPERATURE PROBE/SOALA DE TEMPERATURA
- 25 EXTERNAL TEMPERATURE PROBE/SOALA DE TEMPERATURA EXTERNA
- 26 THERMOSIST/TENSIOSTAT
- 27 CONDENSER REGULATOR WITH INCORPORATED PROBE/REGULATOR CONDENSATOR CU PROBE INCORPORATE
- 28 PRESSURIZED DAMPER/AMORTISOR PRESURIZATE

INDICATORS LEGEND TO GROUND CONNECTIONS/
LEGENDA INDICATORII AI CONEXIUNII SOL

- 1 GROUND CONNECTION OF NEUTRAL (CENTER TRANSFORMERS STRAP) WITH CABLE YELLOW-GREEN NOTOR-K-0 = 35 MM²
- 2 CONDUCTIVE SOL NEUTRE (CENTRA TRANSFORMATORUL STRAP) CU CABLU GALBEN-VERDE NOTOR-K-0 = 35 MM²
- 3 GROUND CONNECTION OF THE CHASSIS OF TRANSFORMER CABLE YELLOW-GREEN NOTOR-K-5 = 35 MM²/CONDUCTIE SOL DE CAROSIA CABLU GALBEN-VERDE NOTOR-K-5 = 35 MM²
- 4 CABLE CABLE-TERRE NOTOR-K-5 = 35 MM²
- 5 GROUND CONNECTION OF THE BOX OR GRID TRANSFORMER PROTECTION WITH CABLE YELLOW-GREEN NOTOR-K-5 = 35 MM²/CONDUCTIE SOL DE PROTECTIE CABLU GALBEN-VERDE NOTOR-K-5 = 35 MM²
- 6 GROUND CONNECTION OF SCREEN CABLE W/ CABLE YELLOW-GREEN NOTOR-K-5 = 35 MM²/CONDUCTIE SOL DE ECRAN CABLU W/ CABLU GALBEN-VERDE NOTOR-K-5 = 35 MM²
- 7 GROUND CONNECTION OF PROTECT PENNUL UTILITARI CABLU ALUMINATE JT CONDUCTIE SOL PAVANT DE PER-COLECTOR DE LV CABLU/CONDUCTIE SOL PAVANT DE PER-COLECTOR DE LV CABLU
- 8 GROUND CONNECTION OF BAR-COLECTOR OF LV PANEL/CONDUCTIE SOL PAVANT DE PER-COLECTOR DE LV PAVANT
- 9 GROUND CONNECTION OF BAR-COLECTOR OF LV PANEL/CONDUCTIE SOL PAVANT DE PER-COLECTOR DE LV PAVANT
- 10 GROUND CONNECTION OF BAR-COLECTOR OF LV PANEL/CONDUCTIE SOL PAVANT DE PER-COLECTOR DE LV PAVANT
- 11 GROUND CONNECTION OF BAR-COLECTOR OF LV PANEL/CONDUCTIE SOL PAVANT DE PER-COLECTOR DE LV PAVANT
- 12 GROUND CONNECTION OF BAR-COLECTOR OF LV PANEL/CONDUCTIE SOL PAVANT DE PER-COLECTOR DE LV PAVANT

GENERAL PLAN / PLANUL GENERAL



COLORS LEGEND/COLOR CHEIE

- LIGHT DRIVING FORCE SYSTEM/SISTEMUL DE LUMINA FORTA MOTRICE(LFM)
- SUPERVISION SYSTEM/SISTEMUL DE SUPERVEZARE (LSP)
- EMERGENCY TELEPHONE AND SIGNAL DISTRIBUTION SYSTEM/SISTEM DE TELEFON DE URGENTA SI DISTRIBUTIE DE SINAL (EAL DS)
- INTERNAL ACCESS CONTROL AND VIDEO SURVEILLANCE SYSTEM/SISTEMUL DE ERGENTA SI SUPERVEZARE
- FIRE DETECTION SYSTEM/SISTEMUL DE DETECTIE INCENDIU
- GSM/GPRS ROAD SYSTEM/SISTEMUL DE ROADA GSM/GPRS
- THE PROTECTION SYSTEM/SISTEMUL DE INCENDIU
- VENTILATION SYSTEM/SISTEMUL DE VENTILATIE
- EMERGENCY DATA NETWORK SYSTEM/SISTEMUL DE RETEA DE DATE DE URGENTA

NOTES

- LOCAL HIGH NET H = 3 M
- THE LINKS BETWEEN THE VARIOUS CABIN EQUIPMENT WILL BE REALIZED THROUGH FLOOR BARRIERS RUN AT 200 MM FROM THE WALLS AND COVERED WITH CHECKED PLATE 8 MM THICK
- IN THE WALLS CROSSINGS THE FEASIBLE RD 120 WILL BE GUARANTEED BY THE BARRIERS
- ALL BARRIERS HAVE A HEIGHT OF 800 MM ABOVE THE FLOOR
- CONDUCTORS FOR ELECTRICAL SYSTEMS OF DIFFERENT CATEGORY (M.F. BT, SP) INSIDE OF THE BARRIERS, WILL BE NECESSARY SEPARATED BY SEPARATORS
- NOTE:
 - PEREET DEPARTOROR REI20
 - LOCAL HIGH NET H = 3 M
 - LEATURI INTRE DIVERSE ECHIPAMENTE SE VA FACE PENTRU PEREETI PEREETI DE LA 200 MM DE PE PEREETI SI ACOPERITE CU PLACI DE 8 MM GROSALE IN CARBURI
 - PUNCTIUA DE TRECERE A PEREETILOR 120 VA BURETALA DE TREI SA FIE GARANTATA DE BURETILE FCC
 - TOATE SAHABO ALAMINE BARRIERS DE 800 MM DEASUPRA POCOLE
 - CONDUCTORII DE SISTEME ELECTRICE DIN CATEGORIA DIFERITE (M.F. BT, SP) IN INTERIORUL VIZIUNII VA FI NECESSAR SEPARATE SEPARATE

CLIENT / CLIENT

CONSULTANT / CONSULTANT

GOVERNUL ROMANIEI
ROMANIA DEVELOPMENT PROJECT

PROIECT FINANAT DE UNIUNEA EUROPEANA
EUROPEAN UNION DEVELOPMENT PROJECT

C.N.C.F.R. - S.A.

OBERMAYER

TECNIC

CLIENT / CLIENT

CONSULTANT / CONSULTANT

GOVERNUL ROMANIEI
ROMANIA DEVELOPMENT PROJECT

PROIECT FINANAT DE UNIUNEA EUROPEANA
EUROPEAN UNION DEVELOPMENT PROJECT

C.N.C.F.R. - S.A.

OBERMAYER

TECNIC

PROIECT FINANAT DE UNIUNEA EUROPEANA
EUROPEAN UNION DEVELOPMENT PROJECT

C.N.C.F.R. - S.A.

OBERMAYER

TECNIC