

MEDICAL CARE BUILDING LOCAL LEGEND/  
LEGENDA LOCALE CLADIRE DE SANATAIE

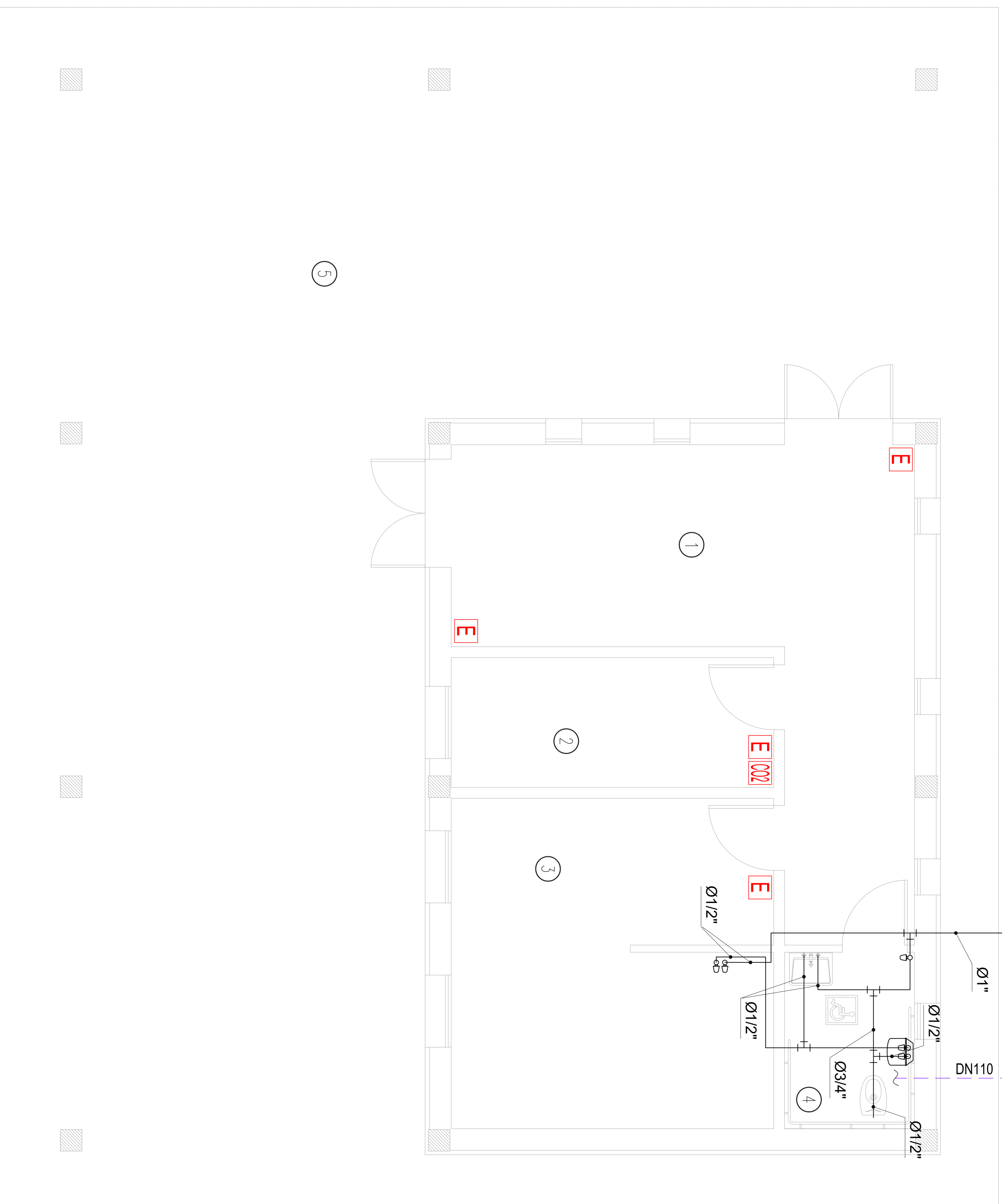
LOCAL	DESCRIPTION/DESCRIERE
1	WAITING - LOCAL LOCALE IN AȘTEPTARE
2	LOCAL
3	SURGERY CHIRURGIE
4	W.C.
5	ARCADE/PORTIC

FROM THE MAIN SUPPLY OF DRINKING WATER/  
DIN PRINCIPALA SURSA DE APA POTABILA

WELL WITH VALVE/BINE CU SUPAPA  
INTERNAL DIMENSIONS/DIMENSIUNI INTERNE 40x40x40 cm

To the sewer system MAIN COLLECTION/  
LA SISTEMULUI DRENAJ DE COLECTARE PRINCIPALE

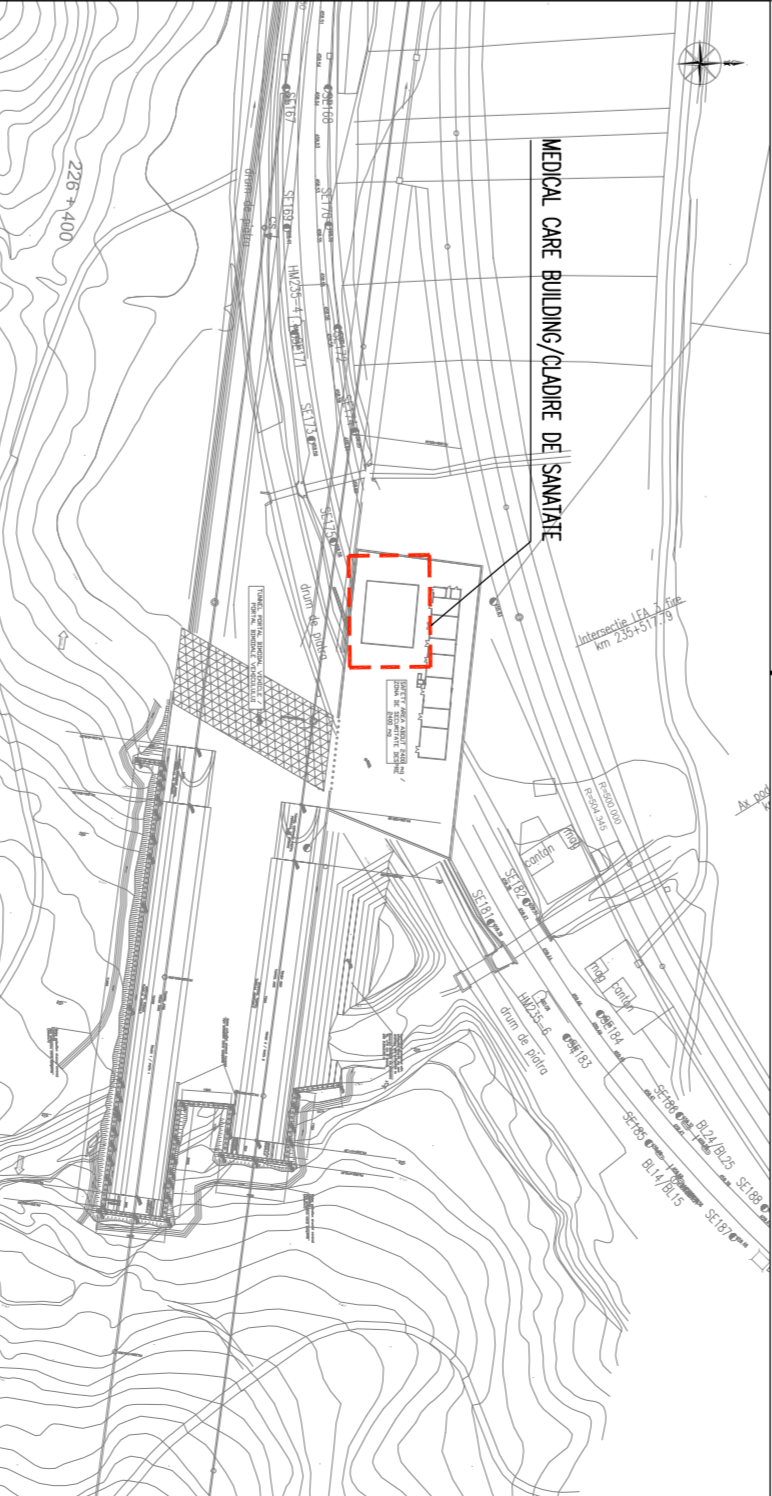
SIPHON WELL INTERNAL  
DIMENSIONS 60x60x60 cm  
TRAP WELL DIMENSIUNI  
INTERNE 60x60x60 cm



SYMBOL LEGEND/LEGENDA SIMBOLURI

SYMBOL/ SIMBOLURI	DESCRIPTION/DESCRIERE
	HOT WATER PIPING IN GALVANIZED STEEL, HOLE IN CEILING
	COLD WATER PIPING IN GALVANIZED STEEL, HOLE IN CEILING
	HOT WATER PIPING IN DUCT, ZINC-PLATE INSIDE IN-DUCT
	COLD WATER PIPING IN DUCT, ZINC-PLATE INSIDE IN-DUCT
	VALVE/SUPAPA
	DOOR
	WINDOW
	SIPHON WELL
	TRAP WELL
	ELECTRICAL WIRING

KEY MAP/HARTA CHEIE



THICKNESS INSULATION STEEL PIPE/GROSIMEA IZOLATIEI TUB OTEL

TEMPERATURE RANGE (°C)	MINIMUM THICKNESS (mm)	MAXIMUM THICKNESS (mm)
20 - 100	10	12
100 - 200	12	15
200 - 300	15	20
300 - 400	20	25
400 - 500	25	30
500 - 600	30	35
600 - 700	35	40
700 - 800	40	45
800 - 900	45	50
900 - 1000	50	55

CLIENT / CLIENT: CFR, C.N.C.F. "C.F.R." - S.A.

CONSULTANT / CONSULTANT: S&S, OBERMEYER, TECHN

PROIECT FINANȚAT DE UNIUNEA EUROPEANA  
ROMANIA ROMANIAN GOVERNMENT

Reabilitarea râului din calea ferată Buzăvi - Sanata, partea componentă a coridorului IV Pan European, pe Secțiunea I Buzăvi - Săguneu

Rehabilitation of the railway from Buzăvi - Sanata, component part of the IV Pan-European Corridor, for the tubes section with maximum speed of 160 km/h.

Secțiunea I Buzăvi - Săguneu

Scale: 1:250

E	A	5	1	0	1	C	1	2	L	X	T	S	2	0	7	8	0	0	6	0
---	---	---	---	---	---	---	---	---	---	---	---	---	---	---	---	---	---	---	---	---