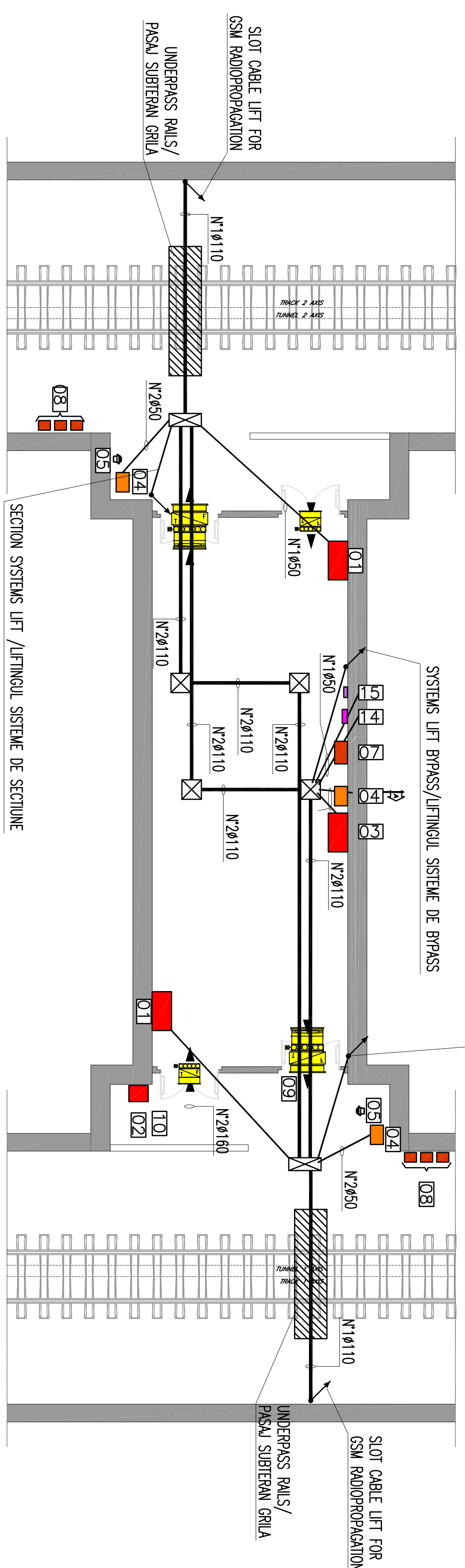
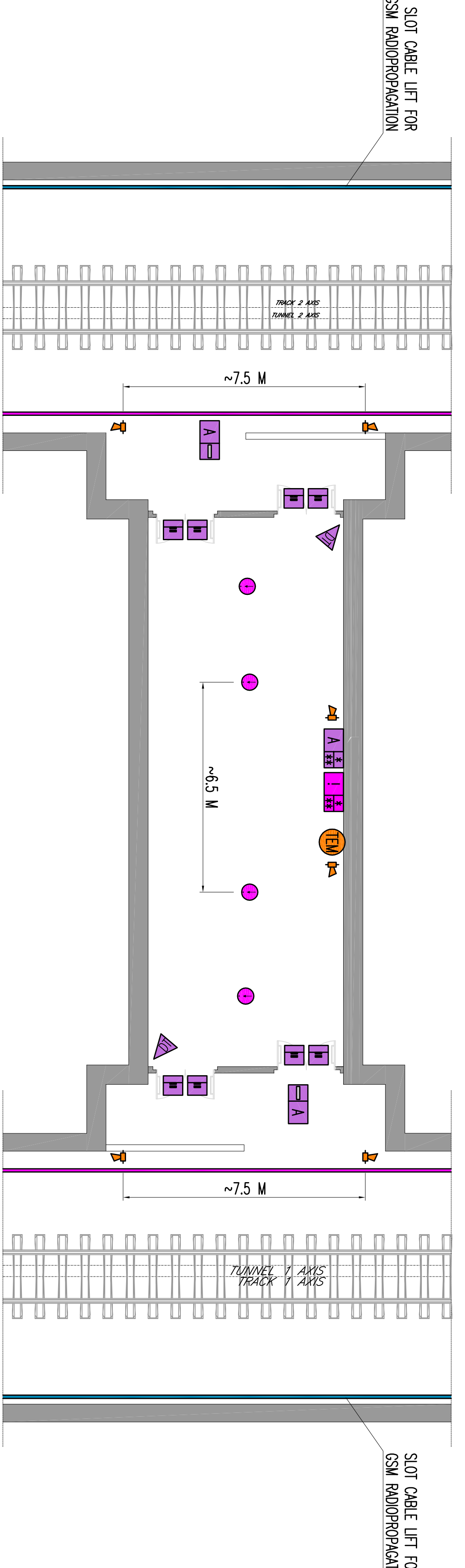


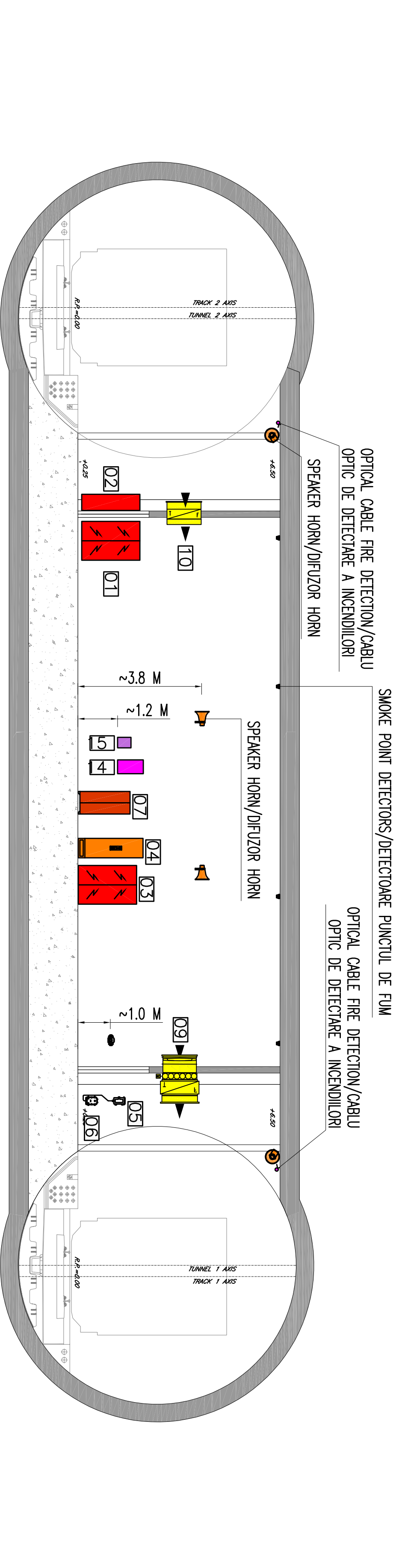
BY-PASS TYPOLOGICAL/TIPOLOGIC



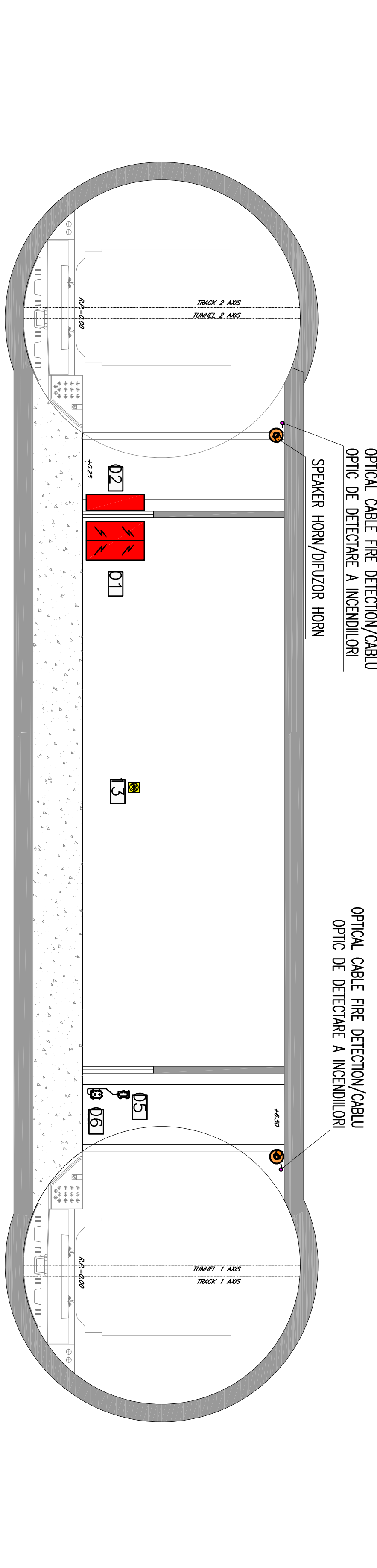
PLANT WITH ELECTRICAL AND DUCTS EQUIPMENTS/ PLANTE CU ECHIPAMENTE ELECTRICE SI CONDUCTE



PLANT WITH TT AND SECURITY SYSTEMS/PLANTE CU SISTEME TT SI SECURITATE

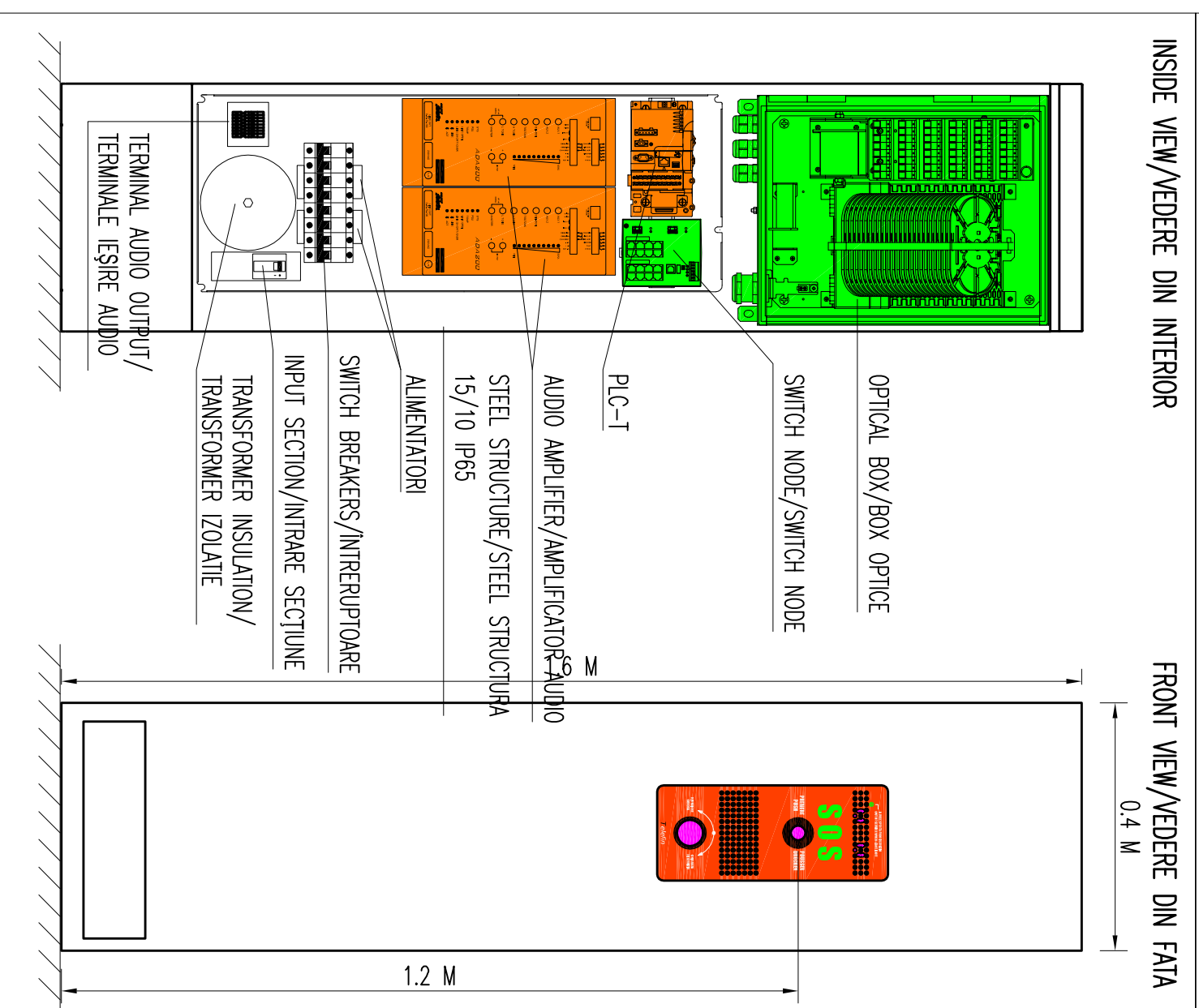


SECTION A-A WITH TT AND SECURITY SYSTEMS/SECTIUNE A-A CU SISTEME TT SI SECURITATE



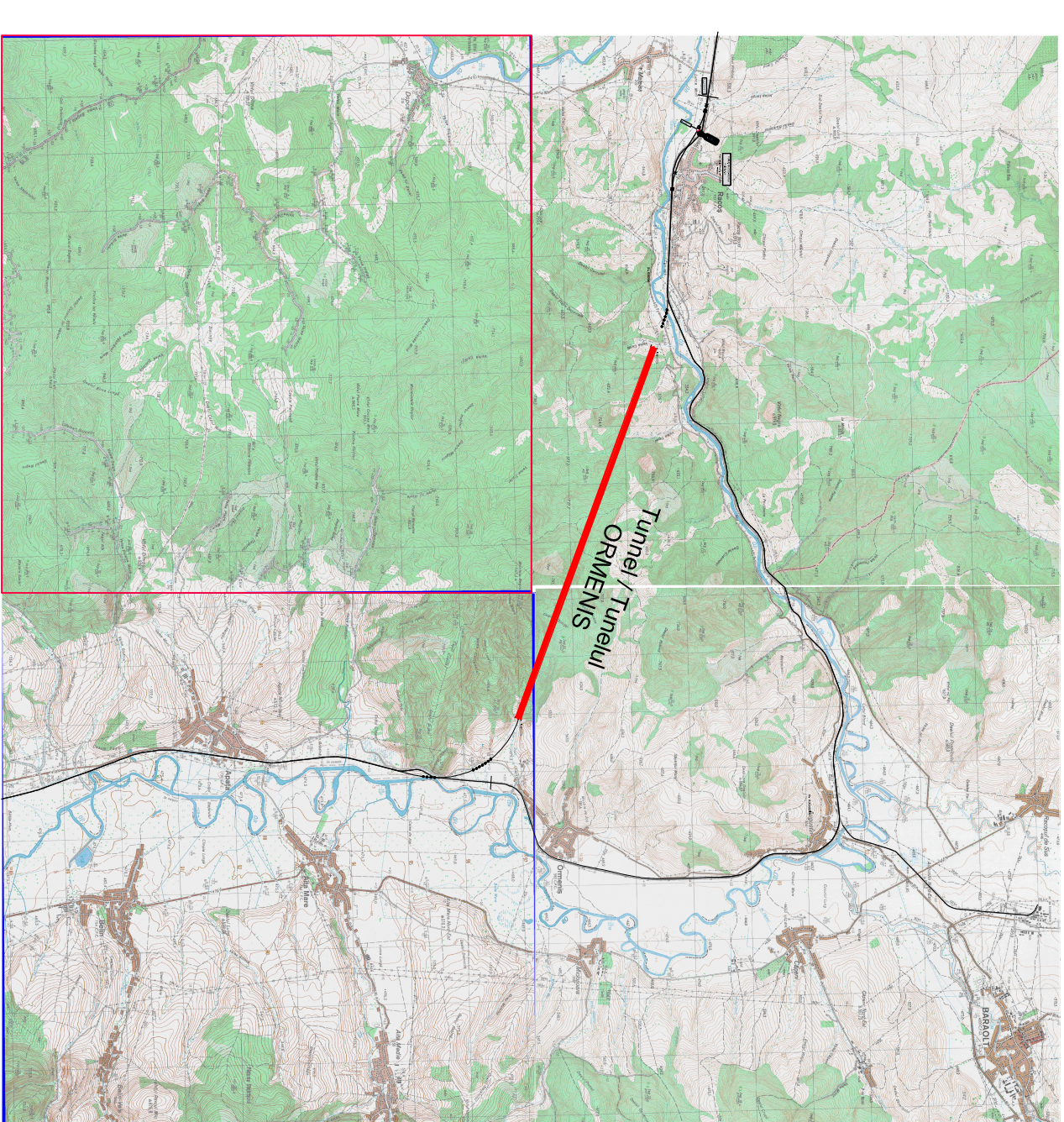
SECTION B-B WITH TT AND SECURITY SYSTEMS/SECTIUNE B-B CU SISTEME TT SI SECURITATE

COLOANE DETAILED/COLOANE DETALIU

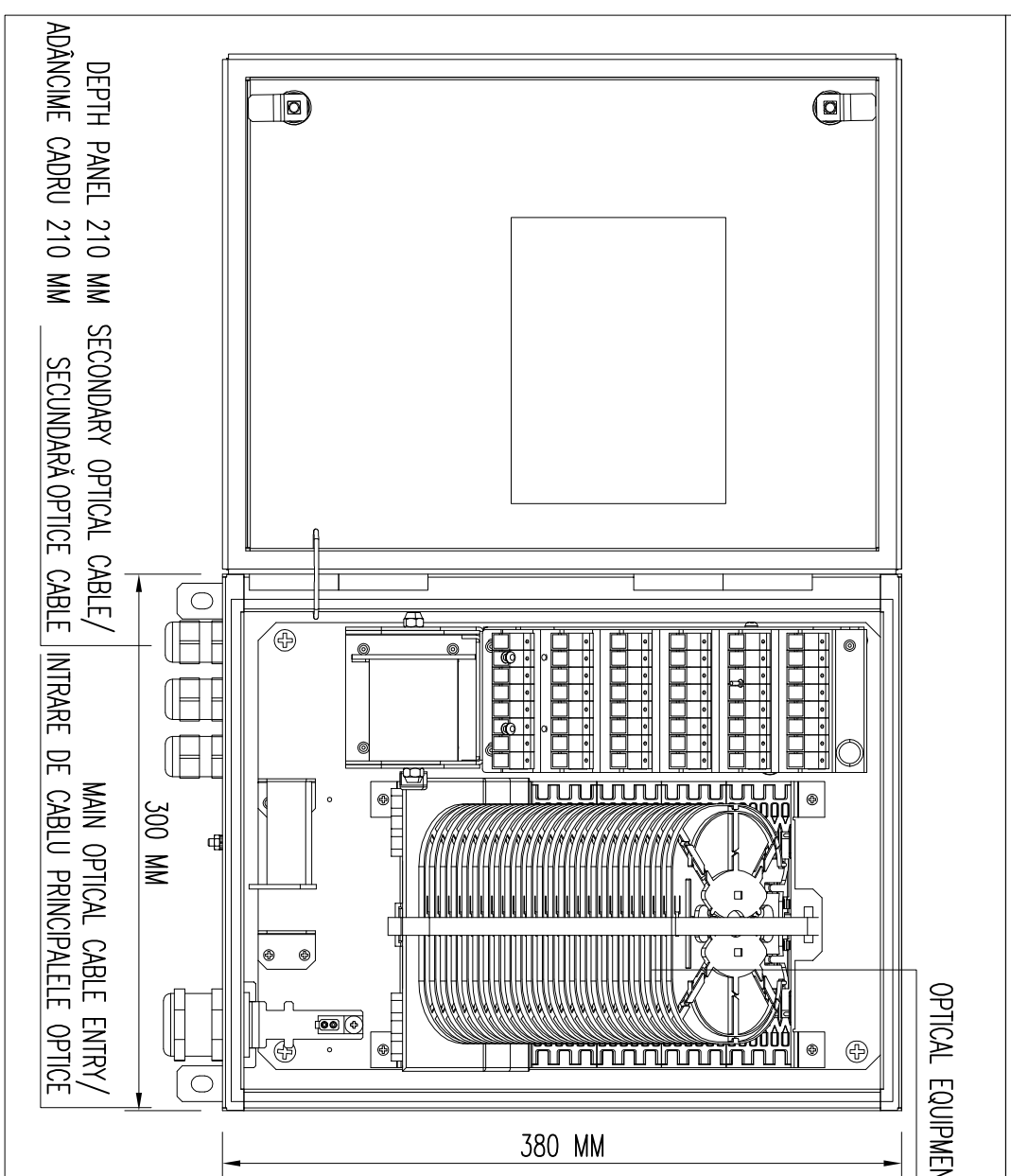


EQUIPMENT LEGEND/UTILAJE LEGENDA	
010	PANEL OF SECTION 040/04000 OF SECTION 040
020	CABINET FOR CABLE REEL/AOLA REEL CABINET
030	COLUMNS/COLOANE TEL/D/S
040	TELEPHONE COLUMN TEL/D/TELEFON COLOANA TEL/D/S
050	TELEPHONE ST/TELEFON ST/S
060	BOX F.S. 3/10 / CASEA F.S. 3/10
070	CABINET CONTAINING THE EQUIPMENT/CABINET CONTIN ECHIPAMENTE FOR HYDRA/HIDRANT
080	VENTILATION-PRESSURE BY-PASS/VENTILATIE-PRESIUNE BY-PASS: - AIR POWER GRID/GARA AER - AUTOMATIC DAMPER CONTROL/AUTOMATIC AMONITIZOR CONTROLUL VANILOR - MAIN FAN/VENTILATOR SAU - VENTILATION ADJUSTMENT-PRESSURE BY-PASS/CONTROLUL DE PRESIUNE AL VANILOR - FIRE DAMPER FOR AMONITIZOR - AUTOMATIC DAMPER CONTROL/AUTOMATIC AMONITIZOR CONTROLUL VANILOR - MAIN FAN/VENTILATOR SAU
090	SPACE PREPARATION FOR LUMS-CSU SYSTEMS/PREGATIRE SPAIU PENTRU SISTEMUL LUMS-CSU
100	SPACE PREPARATION FOR LUMS-CSU SYSTEMS/PREGATIRE SPAIU PENTRU SISTEMUL LUMS-CSU
110	SPACE PREPARATION FOR LUMS-CSU SYSTEMS/PREGATIRE SPAIU PENTRU SISTEMUL LUMS-CSU
120	SPACE PREPARATION FOR LUMS-CSU SYSTEMS/PREGATIRE SPAIU PENTRU SISTEMUL LUMS-CSU
130	CENTRAL FIRE DETECTION/CENTRAL DE DETECTARE A INCENDIULUI
140	CENTRAL ACCESS CONTROL AND INTRUSION DETECTION
150	CENTRAL CONTROL ACCESS SI DE DETECTARE A INTRUZIUNILOR

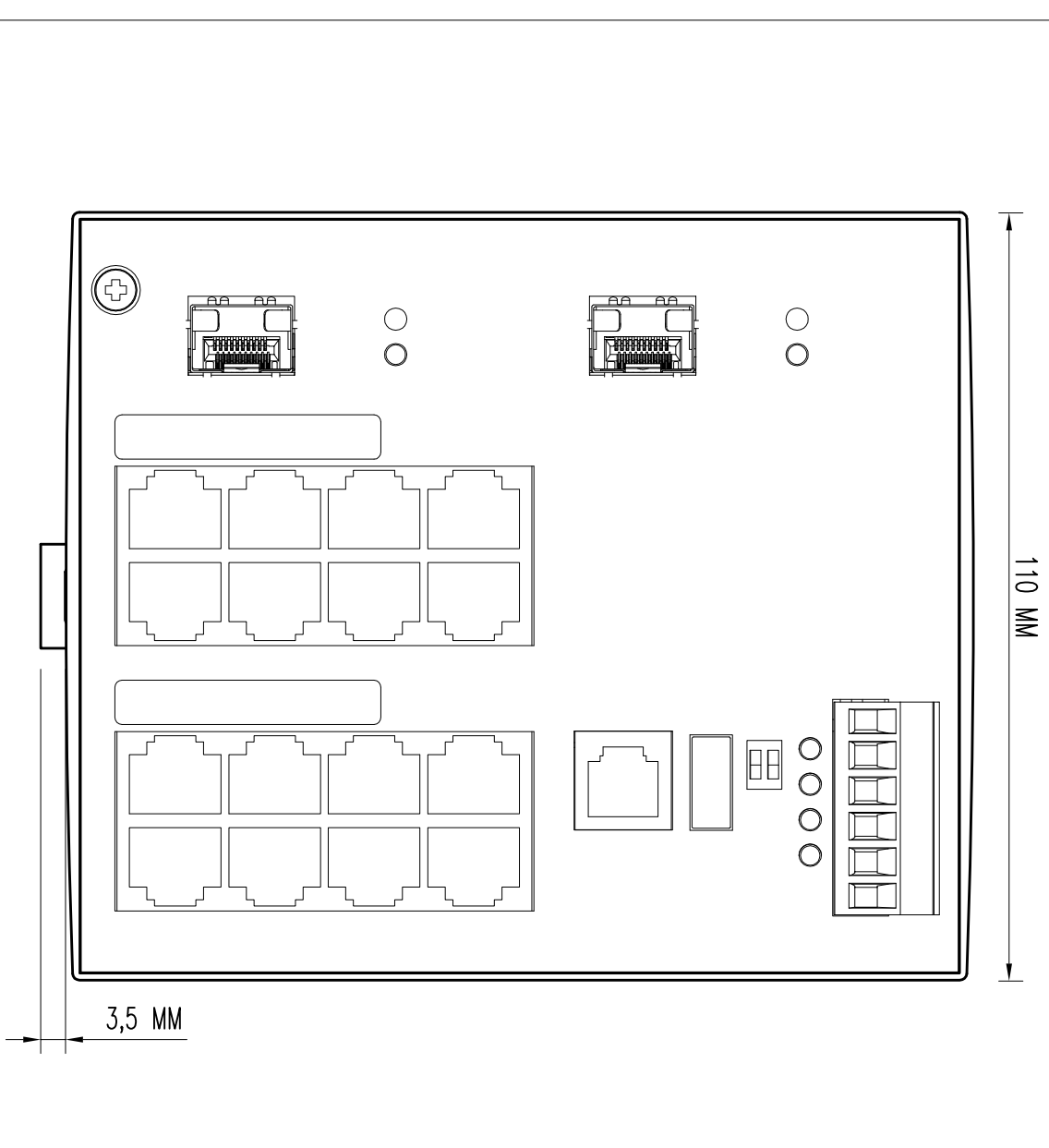
GENERAL PLAN / PLANUL GENERAL



OPTICAL BOX DETAILED/BOXOPTICE DETALIU



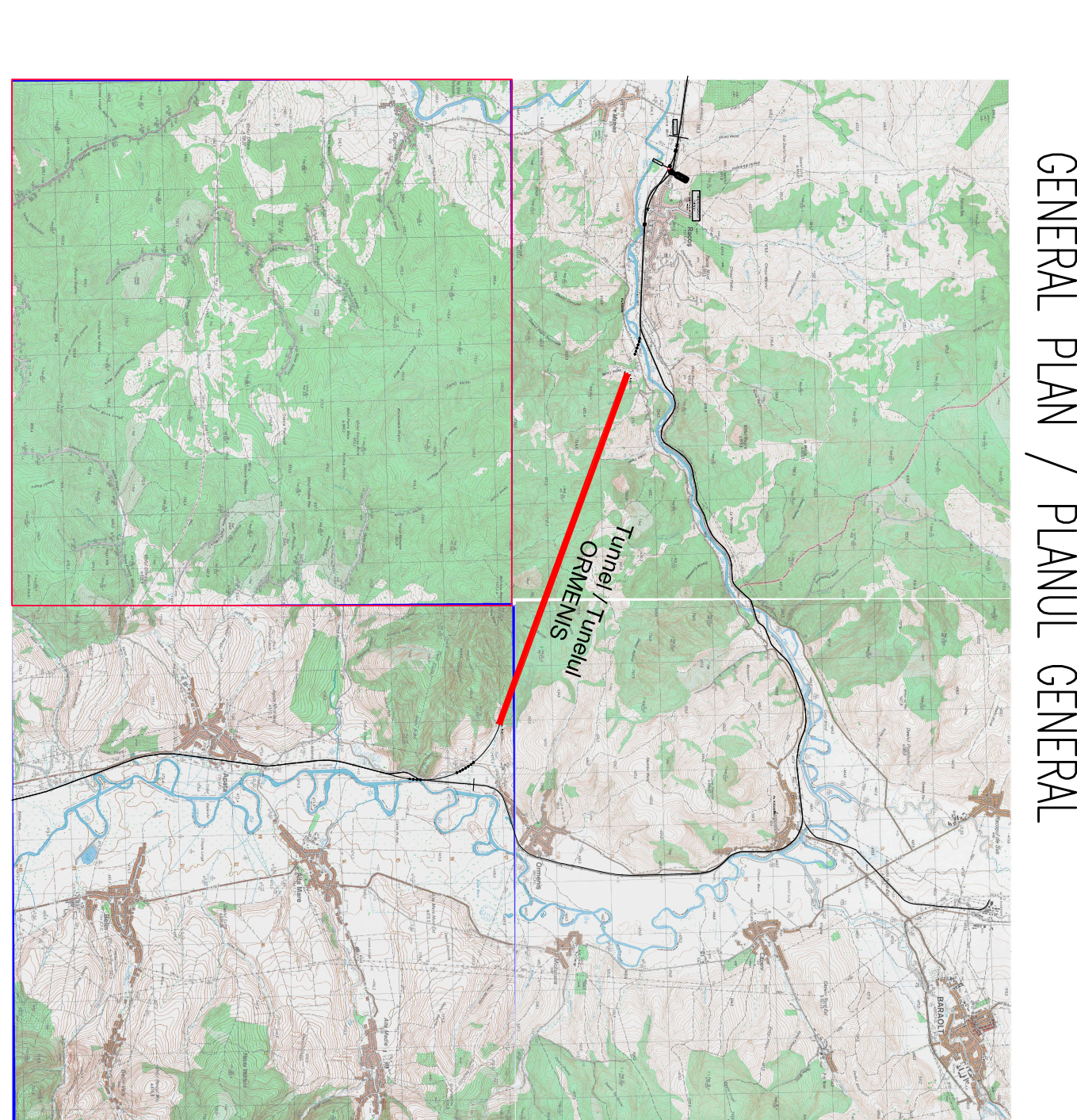
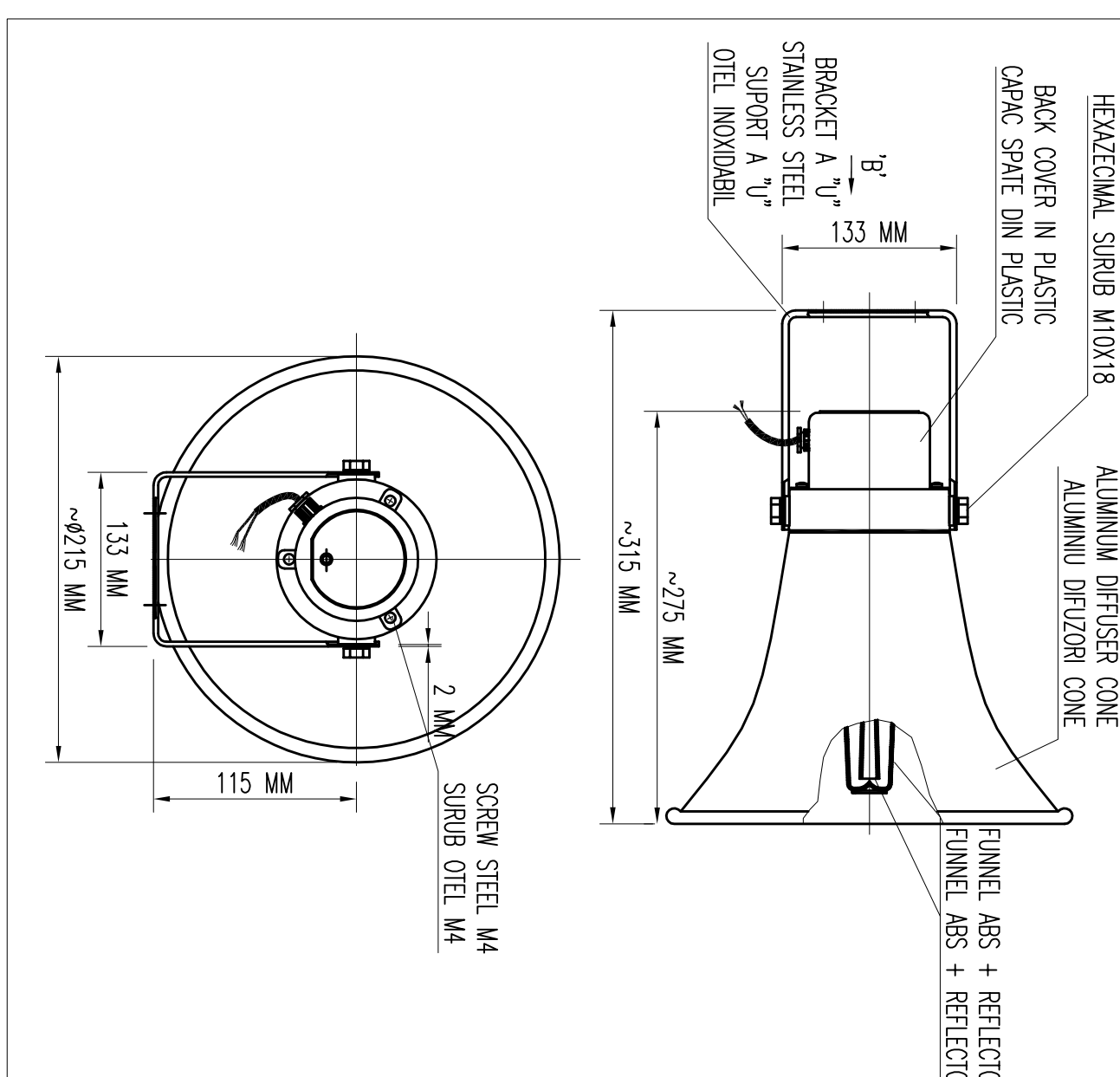
PARTICULAR SWITCH NODE/PARTICULARE SWITCH NODE WITH 16 DOORS R145/CU 16 USI R145



SYMBOLS LEGEND/LEGENDA SIMBOLURI

SYMBOLS LEGEND/LEGENDA SIMBOLURI	
□	POZITIONARE FIECARE PINE FLOOR RECESSED/PERFORIN POZITIONEA INOASTRUL EMI
⊗	PENTRU ASCENSOR/PENTRU ASCENSORII
⊕	PENTRU DESCENSOR/PENTRU DESCENSORII
⊖	EMERGENCY LIGHT BOTTOM/UMS/N LUMINA BOTUNULUI
⊙	GENERAL LIGHTING LUMPS/LUMINI GENERAL LUMPI
⊚	LUMS OF REFERENCE BYPASS-INC/DAWI DE REFERINTA BYPASS-INC/N2 SOCKETS 200 V FOR FIRE BROADER/N2 PRIZE 200 V PENTRU PORNIREA PULSANTIE CON LAMPARA SPAI IN INCHEIURI
⊛	LIGHT FIXTURES 1X18 W EMERGENCY LIGHTING/PROGRAM DE LUMINA 1X18 W LUMINI DE URGENȚA
⊜	LIGHT FIXTURES 1X18 W REFERENCE LIGHTING/PROGRAM DE LUMINA 1X18 W LUMINI DE REFERINTA
⊝	LIGHT FIXTURES 1X18 W GENERAL LIGHTING/PROGRAM DE LUMINA 1X18 W LUMINI GENERAL
⊞	JUNCTION BOX THE A/JUNCTION BOX THE A
⊟	JUNCTION BOX THE B/JUNCTION BOX THE B
⊠	EMERGENCY EXIT SIGN/INSCRIERE ESIPE DE URGENȚA
⊡	EMERGENCY TELEPHONE SIGN/INSCRIERE TELEFON DE URGENȚA
⊢	FILTER MASKS SIGN/INSCRIERE MASTI FILTRU
⊣	BOTTOM EMERGENCY LIGHTS SIGN/INSCRIERE LUMENI BOTUN LUMINI
⊤	EMERGENCY SIGN/INSCRIERE HIDRANT
⊥	ELECTRICAL PLUG TO RESOLVE PROVA ELECTRICAL PENTRU A SAUA
⊦	EMERGENCY EQUIPMENT TO RESOLVE TEMAS/ECHIPAMENT DE URGENȚA PENTRU A SAUA
⊧	ON/OFF ALARM POINT WITH BARGE/PUNCTUL ACTIVAREA- OPTICAL ALARMA CU BARGE
⊨	ACCESS CONTROL AND INTRUSION DETECTION LUMI/CENTRAL DE CONTROLUL ACCES SI DE DETECTARE A INTRUZIUNILOR
⊩	DUAL TECHNOLOGY DETECTORS/DETECTORE DUAL TECHNOLOGIE
⊪	SMOKE DETECTION SENSOR/DETECTIE FUM SENSOR
⊫	STATE DOOR DETECTOR/DETECTIE STAI USA
⊬	CENTRAL LOCAL TECHNICAL FIRE DETECTION-BYPASS-INC/CENTRAL LOCAL DE DETECTARE A INCENDIULUI-BYPASS-DE INC
⊭	SPEAKER HORN WITH POWER P=10 W/DIFUZOR HORN CU PUTERE P=10
⊮	TELEPHONE COLUMN TEL/D/TELEFON COLOANA TEL/D/S

PARTICULAR AUDIO SPEAKER HORN PARTICULARE DIFUZOR HORN



**CLIENT / CLIENT**  
**C.N.C.F. "C.F.R." - S.A.**

**CONSULTANT / CONSULTANT**  
**TECHNIC**

**GOVERNUL ROMANIEI**  
**ROMANIA GOVERNMENT**

**PROIECT FINANȚAT DE UNIUNEA EUROPEANĂ**  
**EUROPEAN UNION FINANCED PROJECT**

**CONSULTANT / SUBCONSULTANT**

**PROIECT/PROIECT**  
**CONSTRUCȚIA SI SECURITATEA**  
**P.171 / T.5**

**DATE**  
 Date: 10.07.2010  
 Scale: 1:100  
 Drawing: 1/17

**CONDITII / CONDITIONS**  
 Sistem de Securitate