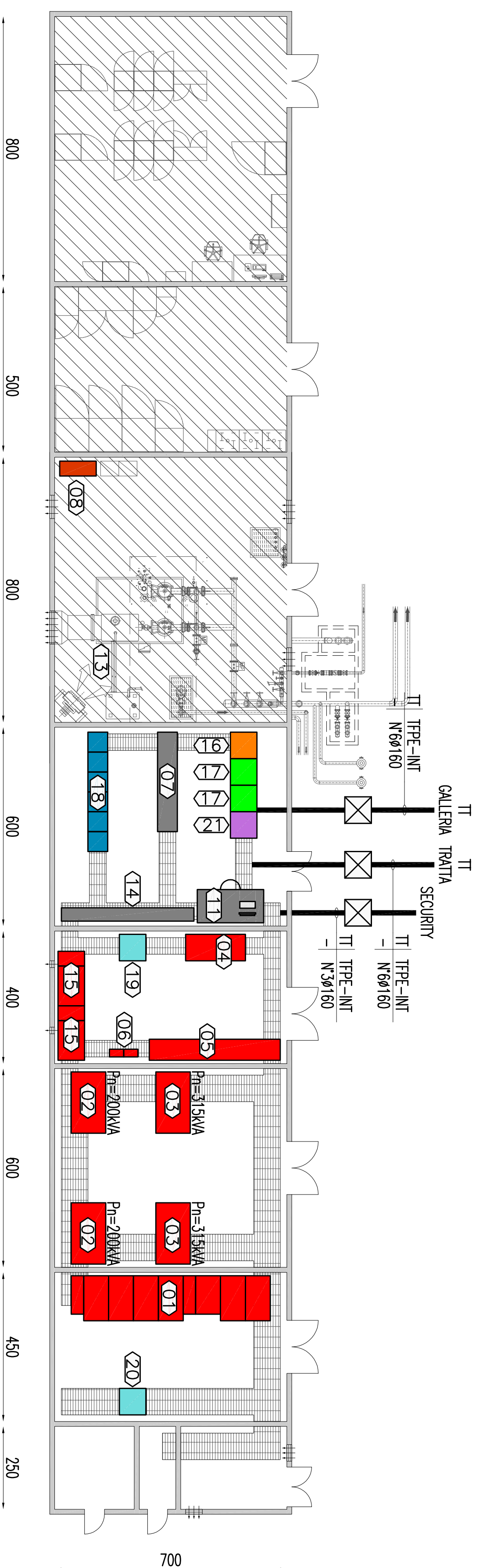
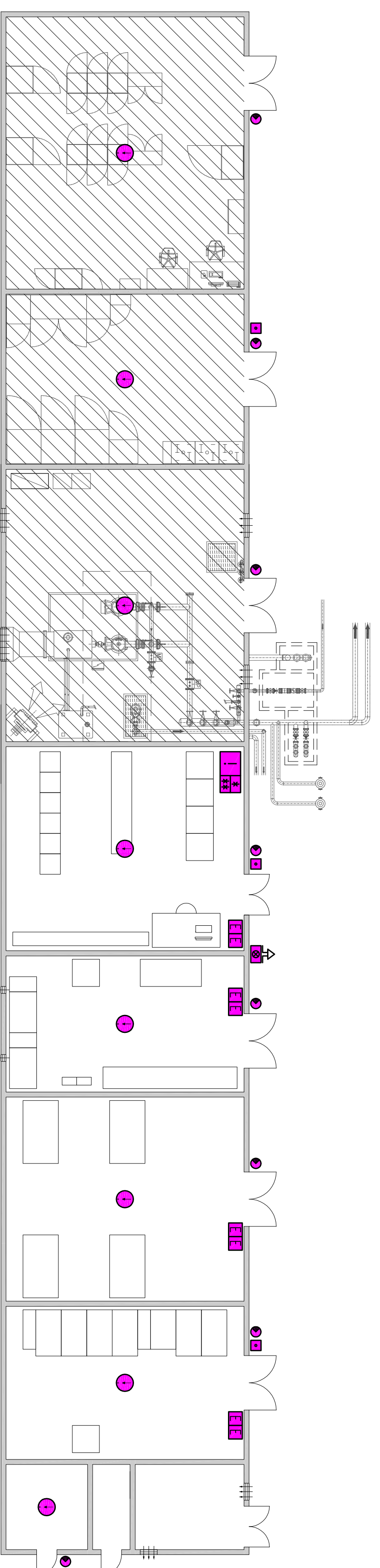


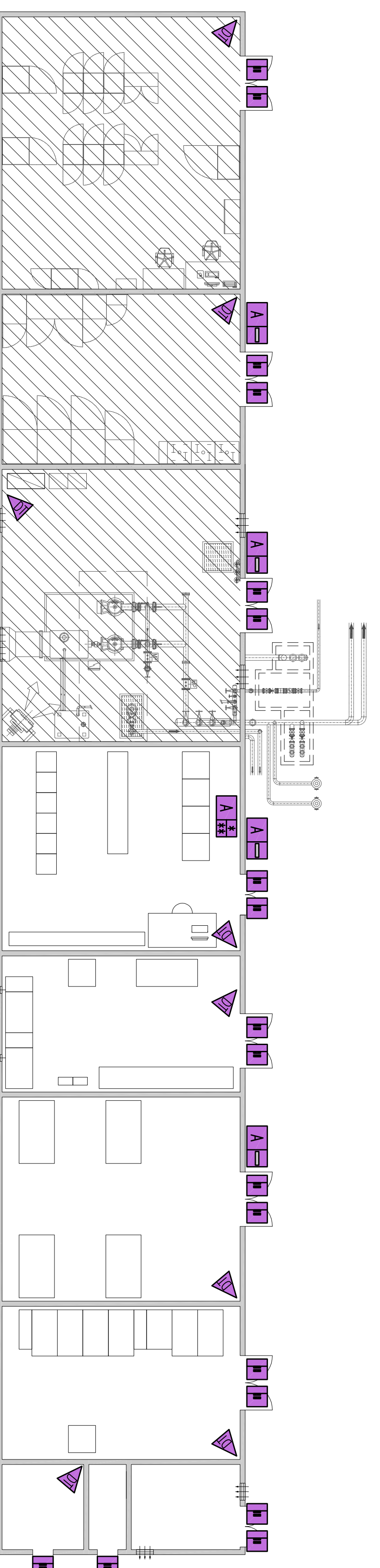
DISPOSAL OF ELECTRICAL EQUIPMENTS AND DUCTWORK/
DISPOZITIE ECHIPAMENTE ELECTRICE SI CONDUCE



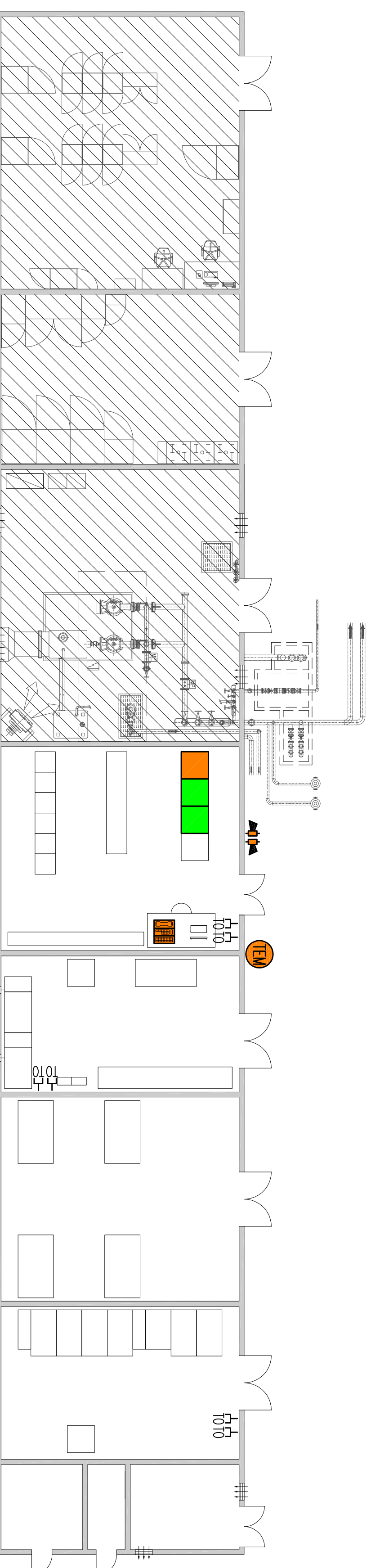
DISPOSAL OF FIRE DETECTION SYSTEM/
DISPOZITIE DE SISTEMUL SE DETECTIE INCENDIU



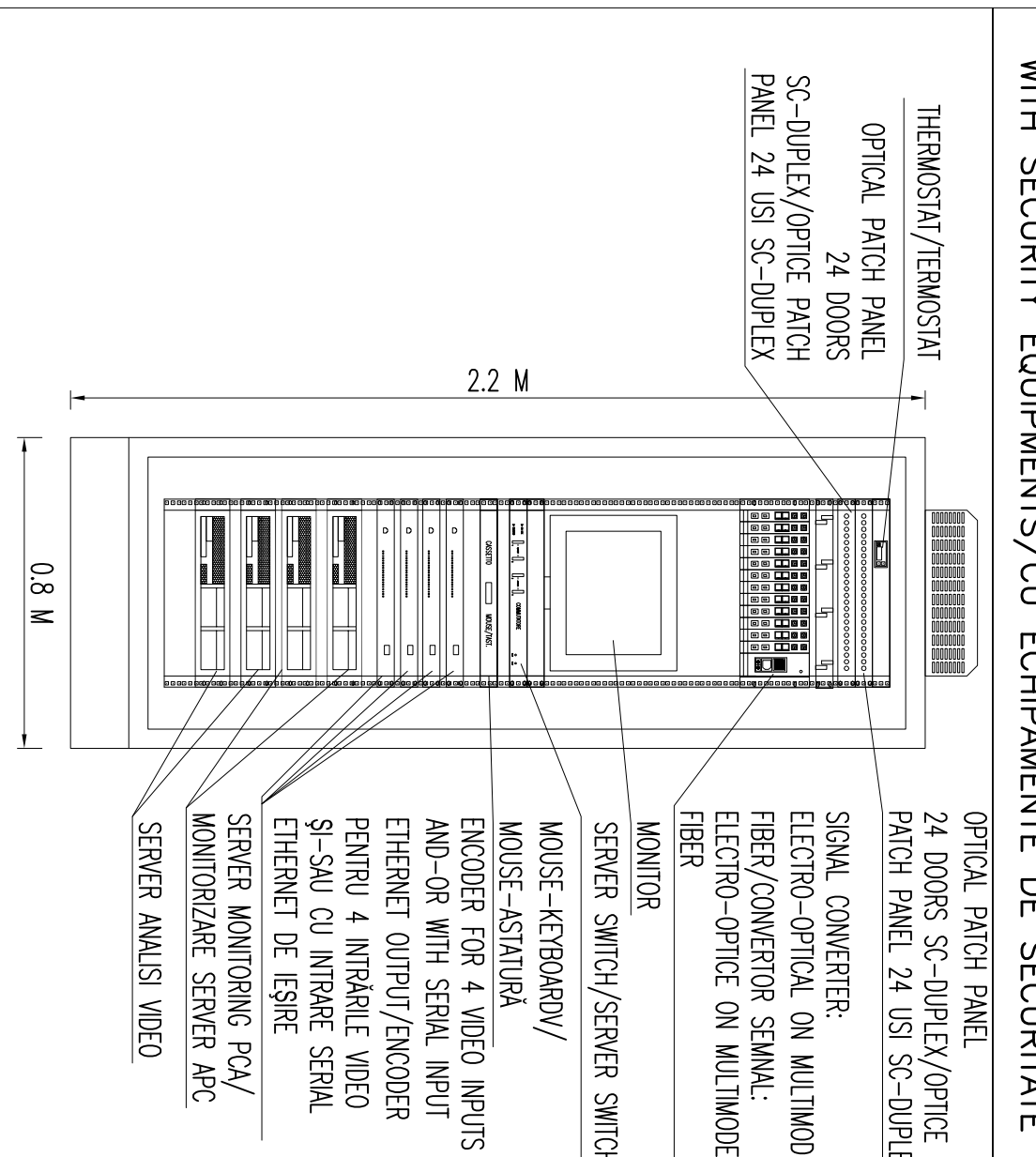
DISPOSAL OF ANTINFUSION AND ACCESS CONTROL SYSTEMS/
DISPOZITIE DE SISTEMUL DE ERRACTIE SI CONTROL ACCES



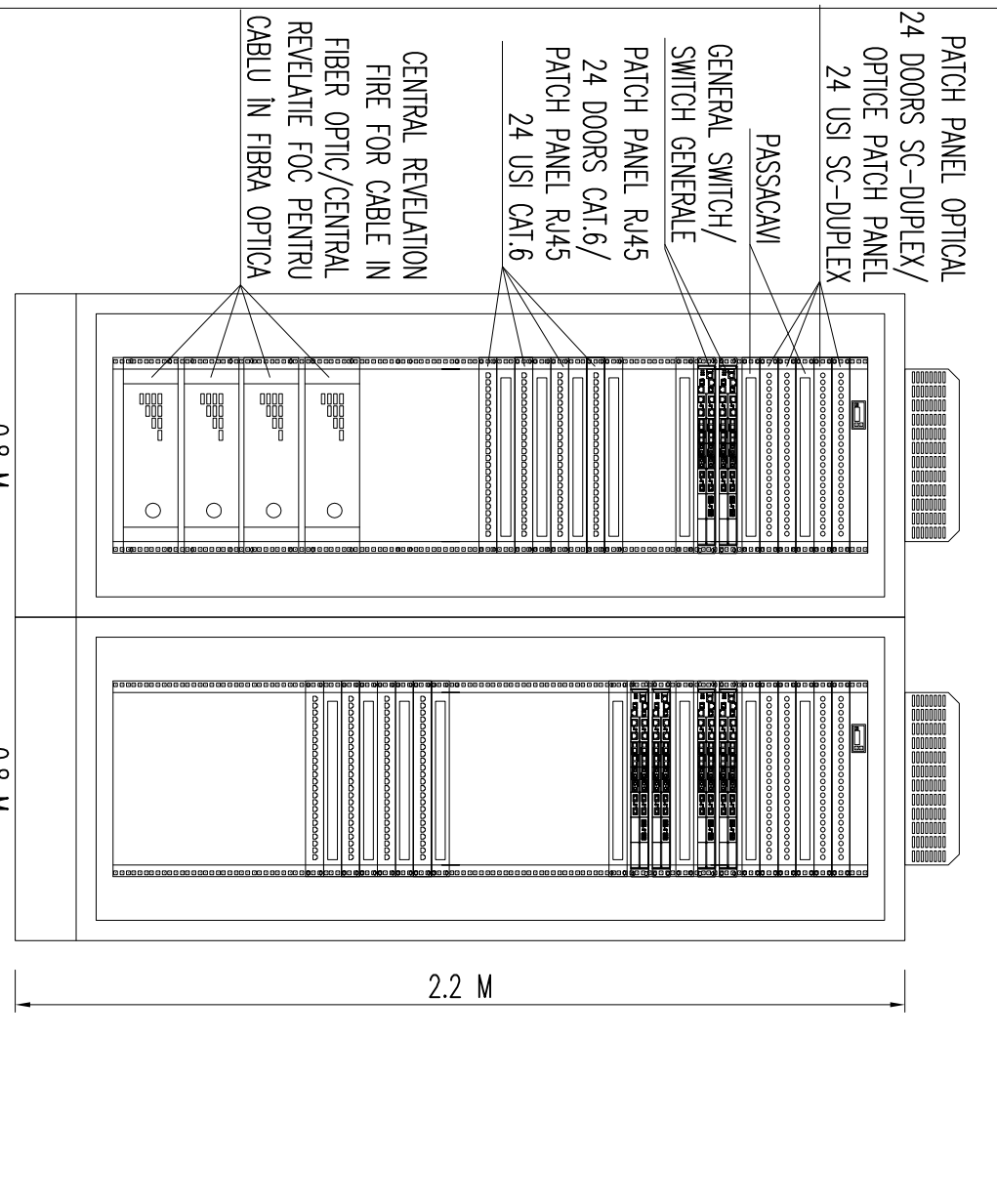
DISPOSAL OF EMERGENCY DATA NETWORK, EMERGENCY TELEPHONE AND SOUND DIFFUSION SYSTEMS/
DISPOZITIE DE SISTEMUL DE RETEA DE URGENTA, TELEFON DE URGENTA SI DIFUZARE DE SUNET



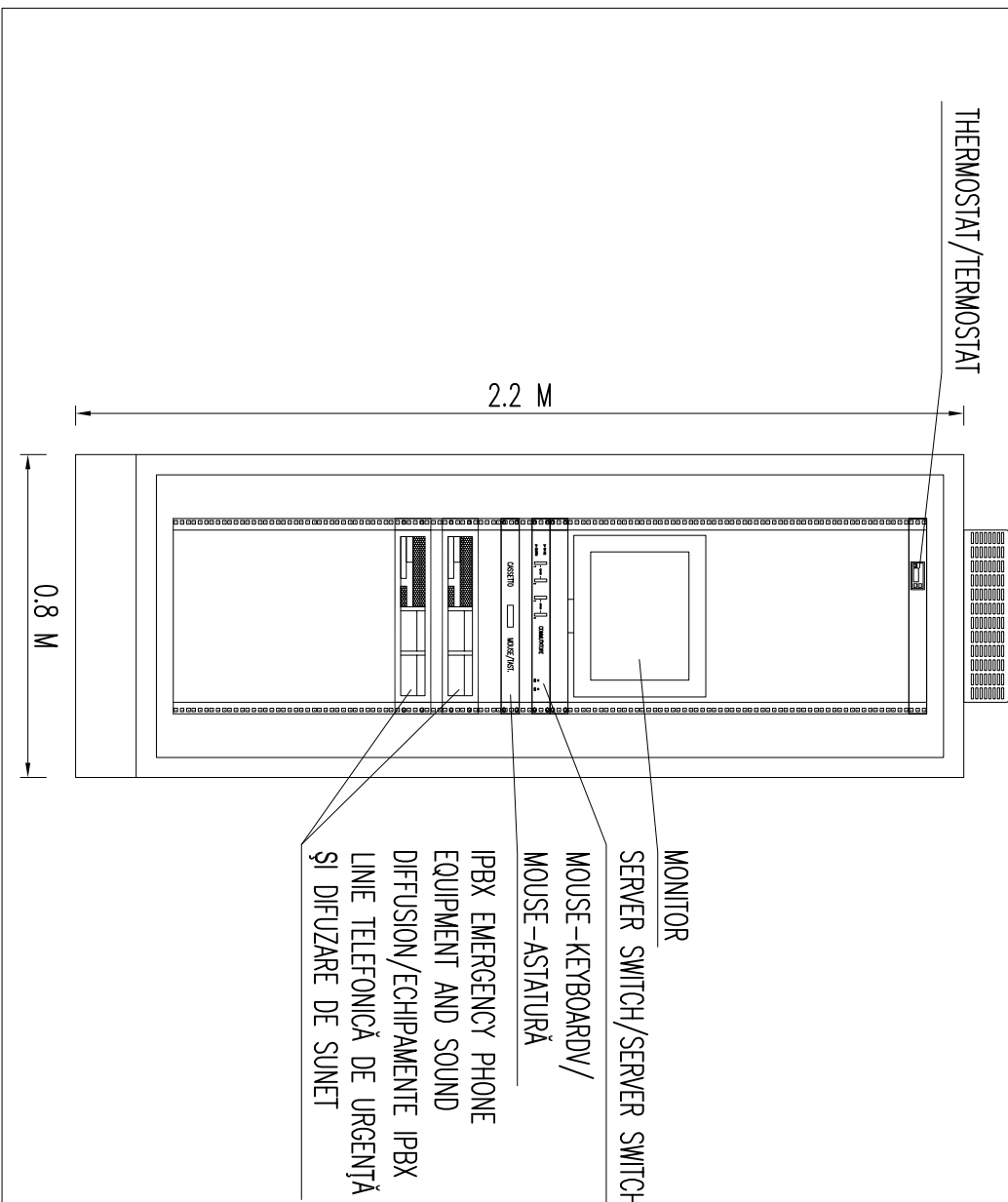
CABINET RACK 19' / CABINET RACK19'



CABINET RACK 19' / CABINET RACK19'
OPTICAL CUPPER PATCH AND DATA NETWORK EQUIPMENT/
PATCH OPTICE-CUPRU SI ECHIPAMENTE DE RETEA DE DATE



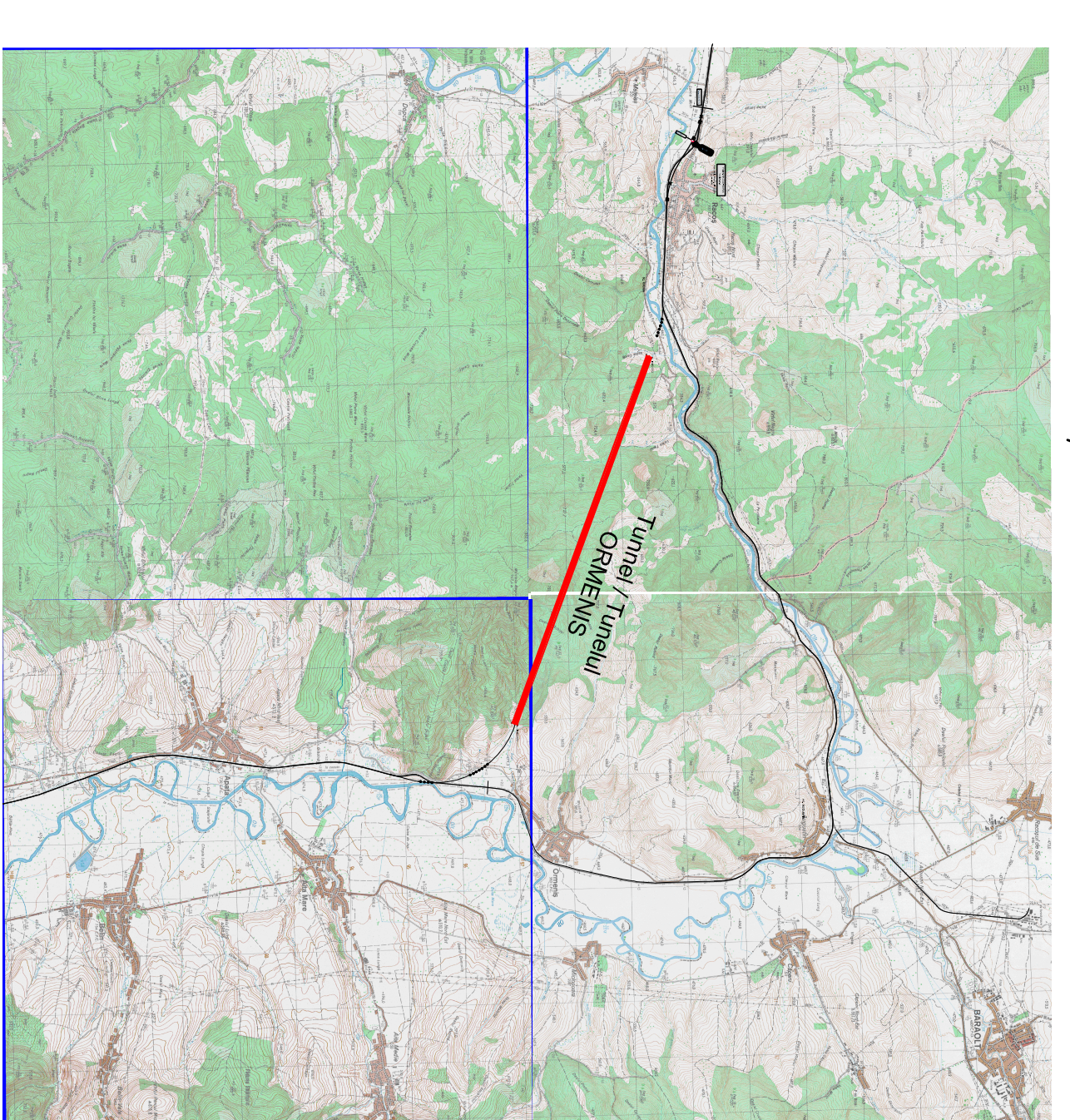
CABINET RACK 19' / CABINET RACK19'
IPBX EMERGENCY PHONE EQUIPMENT AND SOUND DIFFUSION/
ECHIPAMENTE IPBX LINE TELEFONICA DE URGENTA SI DIFUZARE
DE SUNET



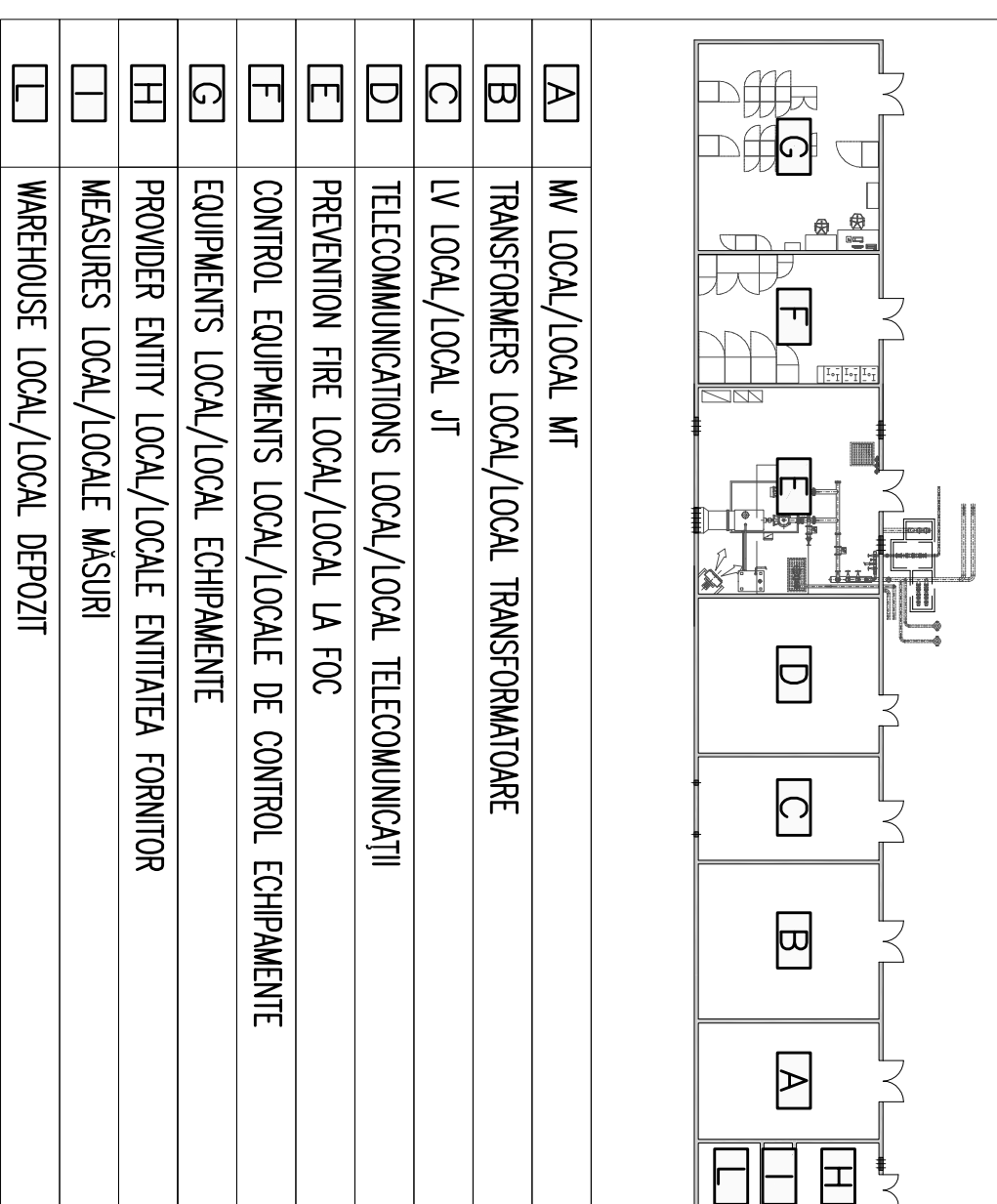
EQUIPMENTS LEGEND / LEGENDA ECHIPAMENTE

- (10) MEDIUM VOLTAGE/AEREA TENSIUNE 0.1kV
- (11) TRANSFORMER W/ BT 20kV/0.4kV
- (12) SPT AREA PANEL/CABINUT DE ZONA SCURT (CSP)
- (13) LOW VOLTAGE PANEL/CABINUT DE JOASA TENSIUNE (LJBT)
- (14) POWER FACTOR CORRECTION/CABINUT DE FACTOR COS FI
- (15) CABINET FOR SYSTEM CSM - R, SH, SW, SW
- (16) INDOOR UNIT OF AIR CONDITIONING/UNITATE INTERIOARA IN PANELOUL CLIMATIZARE
- (17) OPERATOR'S STATION/STANIE DE OPERATORIAL
- (18) ELECTRIC HEATER /AN/VAZ TERM. ELECTRIC
- (19) EQUIPMENTS SIS AND CABE CABINET/ECHIPAMENTE SIS SI CABINET CABLU
- (20) UPS
- (21) CABINET RACK 19' EQUIPMENTS PER EMERGENCY TELEPHONE AND SOUND DIFFUSION/CABINET RACK 19' ECHIPAMENTE PER TELEFON DE URGENTA SI DIFUZARE DE SUNET
- (22) CABINET RACK 19' OPTICAL CONVERTER-COPPER AND DATA NETWORK EQUIPMENTS/CABINET RACK 19' CONVERTOR OPTICE-CUPRU SI ECHIPAMENTE RETEA DATA
- (23) CABINET RACK 19' WITH RADIO LINES/CSM EQUIPMENTS
- (24) CABINET RACK 19' WITH RADIO LINES/CSM EQUIPMENTS
- (25) CABINET RACK 19' WITH RADIO LINES/CSM EQUIPMENTS
- (26) CABINET RACK 19' WITH RADIO LINES/CSM EQUIPMENTS
- (27) CABINET RACK 19' WITH RADIO LINES/CSM EQUIPMENTS
- (28) CABINET RACK 19' WITH RADIO LINES/CSM EQUIPMENTS
- (29) CABINET RACK 19' WITH RADIO LINES/CSM EQUIPMENTS
- (30) CABINET RACK 19' WITH RADIO LINES/CSM EQUIPMENTS
- (31) CABINET RACK 19' WITH RADIO LINES/CSM EQUIPMENTS
- (32) CABINET RACK 19' WITH RADIO LINES/CSM EQUIPMENTS
- (33) CABINET RACK 19' WITH RADIO LINES/CSM EQUIPMENTS
- (34) CABINET RACK 19' WITH RADIO LINES/CSM EQUIPMENTS
- (35) CABINET RACK 19' WITH RADIO LINES/CSM EQUIPMENTS
- (36) CABINET RACK 19' WITH RADIO LINES/CSM EQUIPMENTS
- (37) CABINET RACK 19' WITH RADIO LINES/CSM EQUIPMENTS
- (38) CABINET RACK 19' WITH RADIO LINES/CSM EQUIPMENTS
- (39) CABINET RACK 19' WITH RADIO LINES/CSM EQUIPMENTS
- (40) CABINET RACK 19' WITH RADIO LINES/CSM EQUIPMENTS
- (41) CABINET RACK 19' WITH RADIO LINES/CSM EQUIPMENTS
- (42) CABINET RACK 19' WITH RADIO LINES/CSM EQUIPMENTS
- (43) CABINET RACK 19' WITH RADIO LINES/CSM EQUIPMENTS
- (44) CABINET RACK 19' WITH RADIO LINES/CSM EQUIPMENTS
- (45) CABINET RACK 19' WITH RADIO LINES/CSM EQUIPMENTS
- (46) CABINET RACK 19' WITH RADIO LINES/CSM EQUIPMENTS
- (47) CABINET RACK 19' WITH RADIO LINES/CSM EQUIPMENTS
- (48) CABINET RACK 19' WITH RADIO LINES/CSM EQUIPMENTS
- (49) CABINET RACK 19' WITH RADIO LINES/CSM EQUIPMENTS
- (50) CABINET RACK 19' WITH RADIO LINES/CSM EQUIPMENTS
- (51) CABINET RACK 19' WITH RADIO LINES/CSM EQUIPMENTS
- (52) CABINET RACK 19' WITH RADIO LINES/CSM EQUIPMENTS
- (53) CABINET RACK 19' WITH RADIO LINES/CSM EQUIPMENTS
- (54) CABINET RACK 19' WITH RADIO LINES/CSM EQUIPMENTS
- (55) CABINET RACK 19' WITH RADIO LINES/CSM EQUIPMENTS
- (56) CABINET RACK 19' WITH RADIO LINES/CSM EQUIPMENTS
- (57) CABINET RACK 19' WITH RADIO LINES/CSM EQUIPMENTS
- (58) CABINET RACK 19' WITH RADIO LINES/CSM EQUIPMENTS
- (59) CABINET RACK 19' WITH RADIO LINES/CSM EQUIPMENTS
- (60) CABINET RACK 19' WITH RADIO LINES/CSM EQUIPMENTS
- (61) CABINET RACK 19' WITH RADIO LINES/CSM EQUIPMENTS
- (62) CABINET RACK 19' WITH RADIO LINES/CSM EQUIPMENTS
- (63) CABINET RACK 19' WITH RADIO LINES/CSM EQUIPMENTS
- (64) CABINET RACK 19' WITH RADIO LINES/CSM EQUIPMENTS
- (65) CABINET RACK 19' WITH RADIO LINES/CSM EQUIPMENTS
- (66) CABINET RACK 19' WITH RADIO LINES/CSM EQUIPMENTS
- (67) CABINET RACK 19' WITH RADIO LINES/CSM EQUIPMENTS
- (68) CABINET RACK 19' WITH RADIO LINES/CSM EQUIPMENTS
- (69) CABINET RACK 19' WITH RADIO LINES/CSM EQUIPMENTS
- (70) CABINET RACK 19' WITH RADIO LINES/CSM EQUIPMENTS
- (71) CABINET RACK 19' WITH RADIO LINES/CSM EQUIPMENTS
- (72) CABINET RACK 19' WITH RADIO LINES/CSM EQUIPMENTS
- (73) CABINET RACK 19' WITH RADIO LINES/CSM EQUIPMENTS
- (74) CABINET RACK 19' WITH RADIO LINES/CSM EQUIPMENTS
- (75) CABINET RACK 19' WITH RADIO LINES/CSM EQUIPMENTS
- (76) CABINET RACK 19' WITH RADIO LINES/CSM EQUIPMENTS
- (77) CABINET RACK 19' WITH RADIO LINES/CSM EQUIPMENTS
- (78) CABINET RACK 19' WITH RADIO LINES/CSM EQUIPMENTS
- (79) CABINET RACK 19' WITH RADIO LINES/CSM EQUIPMENTS
- (80) CABINET RACK 19' WITH RADIO LINES/CSM EQUIPMENTS
- (81) CABINET RACK 19' WITH RADIO LINES/CSM EQUIPMENTS
- (82) CABINET RACK 19' WITH RADIO LINES/CSM EQUIPMENTS
- (83) CABINET RACK 19' WITH RADIO LINES/CSM EQUIPMENTS
- (84) CABINET RACK 19' WITH RADIO LINES/CSM EQUIPMENTS
- (85) CABINET RACK 19' WITH RADIO LINES/CSM EQUIPMENTS
- (86) CABINET RACK 19' WITH RADIO LINES/CSM EQUIPMENTS
- (87) CABINET RACK 19' WITH RADIO LINES/CSM EQUIPMENTS
- (88) CABINET RACK 19' WITH RADIO LINES/CSM EQUIPMENTS
- (89) CABINET RACK 19' WITH RADIO LINES/CSM EQUIPMENTS
- (90) CABINET RACK 19' WITH RADIO LINES/CSM EQUIPMENTS
- (91) CABINET RACK 19' WITH RADIO LINES/CSM EQUIPMENTS
- (92) CABINET RACK 19' WITH RADIO LINES/CSM EQUIPMENTS
- (93) CABINET RACK 19' WITH RADIO LINES/CSM EQUIPMENTS
- (94) CABINET RACK 19' WITH RADIO LINES/CSM EQUIPMENTS
- (95) CABINET RACK 19' WITH RADIO LINES/CSM EQUIPMENTS
- (96) CABINET RACK 19' WITH RADIO LINES/CSM EQUIPMENTS
- (97) CABINET RACK 19' WITH RADIO LINES/CSM EQUIPMENTS
- (98) CABINET RACK 19' WITH RADIO LINES/CSM EQUIPMENTS
- (99) CABINET RACK 19' WITH RADIO LINES/CSM EQUIPMENTS
- (100) CABINET RACK 19' WITH RADIO LINES/CSM EQUIPMENTS

GENERAL PLAN / PLANUL GENERAL



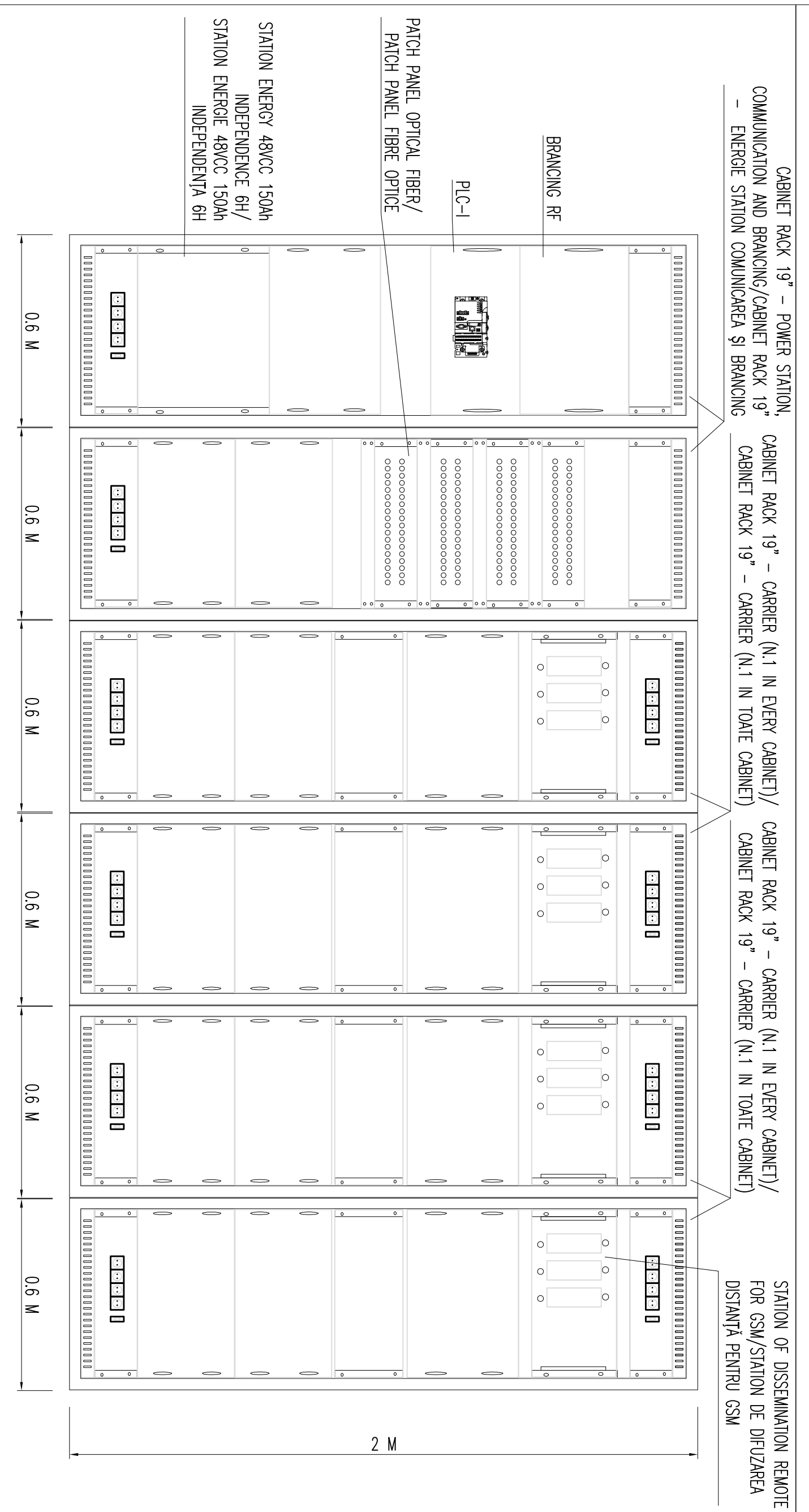
CABIN LOCAL LEGEND / LEGENDA LOCAL CABINA



COLORS LEGEND / COLOR CHEIE

- Light Draining Force /SISTEMUL DE SUPRAPERCHER (LJBT)
- Suppression System /SISTEMUL DE SUPRAPERCHER (LJBT)
- Emergency Telephone and Sound Diffusion System /SISTEMUL DE TELEFON DE URGENTA SI DIFUZARE DE SUNET (EJBT, DS)
- Access Control and Video Surveillance System /SISTEMUL DE ERRACTIE CONTROL ACCES SI SUPRAPERCHER
- Fire Detection System /SISTEMUL DE DETECTIE INCENDIU
- CSM/UMTS RADIO SYSTEM /SISTEMUL DE RADIO CSM/UMTS
- The Protection System /SISTEMUL DE INCENDIU
- EMERGENCY DATA NETWORK SYSTEM /SISTEMUL DE RETEA DE DATE DE URGENTA
- VENTILATION SYSTEM /SISTEMUL DE VENTILARE
- VENTILATION DATA NETWORK SYSTEM /SISTEMUL DE RETEA DE DATE DE URGENTA

CABINET GSM/UMTS



NOTES

- OPTIONAL BERTZO
- LOCAL LIGHT NET H = 3 M
- THE LINKS BETWEEN THE VARIOUS CABIN EQUIPMENT WILL BE REALIZED THROUGH FLOOR BARRIERS RUN AT 200 MM FROM THE WALLS AND COVERED WITH CHECKED PLATE 8 MM THICK
- IN THE WALLS CROSSINGS THE FEATURE RT 120 WILL BE GUARANTEED BY THE BARRIERS
- ALL BARRIERS HAVE A HEIGHT OF 800 MM ABOVE THE FLOOR
- CONDUCTORS FOR ELECTRICAL SYSTEMS OF DIFFERENT CATEGORIES (W, BT, SP) INSIDE OF THE BARRIERS, WILL BE NECESSARY SEPARATED BY SEPARATORS
- NOTE:
- PERETI DESPARTATOR BERTZO
- LOCAL LIGHT NET H = 3 M
- LEZATURA INTRE DIVERSE ECHIPAMENTE SE VA FACE PRIN PANELO UMANI BARRIERS PROTESTE DE LA 200 MM DE PE PERETII SI APERTELE A FEREZULUI 120 MM BARRIERA DE TRE SA FIE GARANTATA DE BARRIERE FCC
- PUNCTULUI DE TRECERE A FEREZULUI 120 MM BARRIERA DE TRE SA FIE GARANTATA DE BARRIERE FCC
- TOTUL SA LIAZII O LIAZII BARRIERS DE 800 MM DEASUSUA PODELE
- CONDUCTORII DE SISTEME ELECTRICE DIN CATEGORII DIFERITE (W, BT, SP) IN INTERIORUL VIZIUNII VA FI NECESSAR SEPARATELE SEPARATE

GOVERNUL ROMANIEI
ROMANIA DEVELOPMENT PROJECT

PROIECT FINANCIAT DE UNIUNEA EUROPEANA
SPERD SAU MARESI DEVELOPMENT PROJECT

CLIENT / CLIENT
C.N.C.F. "C.F.R." - S.A.

CONSULTANT / CONSULTANT
SISTEMUL DE RETEA DE DATE DE URGENTA
SISTEMUL DE SUPRAPERCHER
SISTEMUL DE TELEFON DE URGENTA SI DIFUZARE DE SUNET
SISTEMUL DE ERRACTIE CONTROL ACCES SI SUPRAPERCHER
SISTEMUL DE DETECTIE INCENDIU
SISTEMUL DE RADIO CSM/UMTS
SISTEMUL DE VENTILARE
SISTEMUL DE RETEA DE DATE DE URGENTA

SUBCONSULTANT / SUBCONSULTANT
SISTEMUL DE RETEA DE DATE DE URGENTA
SISTEMUL DE SUPRAPERCHER
SISTEMUL DE TELEFON DE URGENTA SI DIFUZARE DE SUNET
SISTEMUL DE ERRACTIE CONTROL ACCES SI SUPRAPERCHER
SISTEMUL DE DETECTIE INCENDIU
SISTEMUL DE RADIO CSM/UMTS
SISTEMUL DE VENTILARE
SISTEMUL DE RETEA DE DATE DE URGENTA

PROIECT FINANCIAT DE UNIUNEA EUROPEANA
SPERD SAU MARESI DEVELOPMENT PROJECT

CLIENT / CLIENT
C.N.C.F. "C.F.R." - S.A.

CONSULTANT / CONSULTANT
SISTEMUL DE RETEA DE DATE DE URGENTA
SISTEMUL DE SUPRAPERCHER
SISTEMUL DE TELEFON DE URGENTA SI DIFUZARE DE SUNET
SISTEMUL DE ERRACTIE CONTROL ACCES SI SUPRAPERCHER
SISTEMUL DE DETECTIE INCENDIU
SISTEMUL DE RADIO CSM/UMTS
SISTEMUL DE VENTILARE
SISTEMUL DE RETEA DE DATE DE URGENTA

SUBCONSULTANT / SUBCONSULTANT
SISTEMUL DE RETEA DE DATE DE URGENTA
SISTEMUL DE SUPRAPERCHER
SISTEMUL DE TELEFON DE URGENTA SI DIFUZARE DE SUNET
SISTEMUL DE ERRACTIE CONTROL ACCES SI SUPRAPERCHER
SISTEMUL DE DETECTIE INCENDIU
SISTEMUL DE RADIO CSM/UMTS
SISTEMUL DE VENTILARE
SISTEMUL DE RETEA DE DATE DE URGENTA