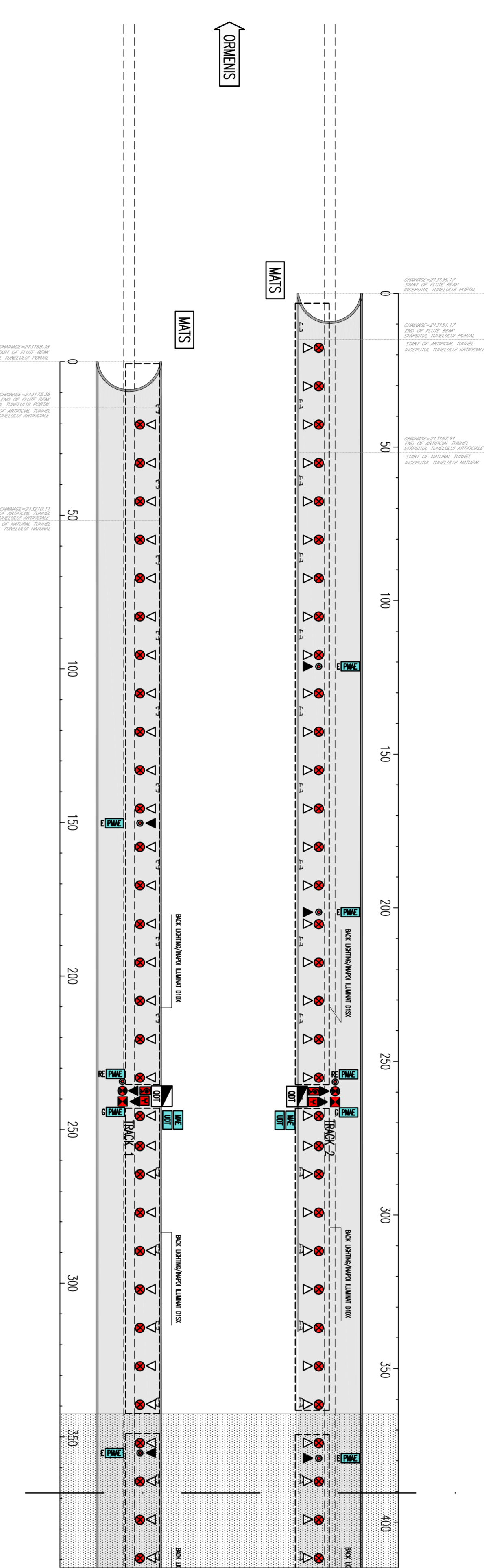


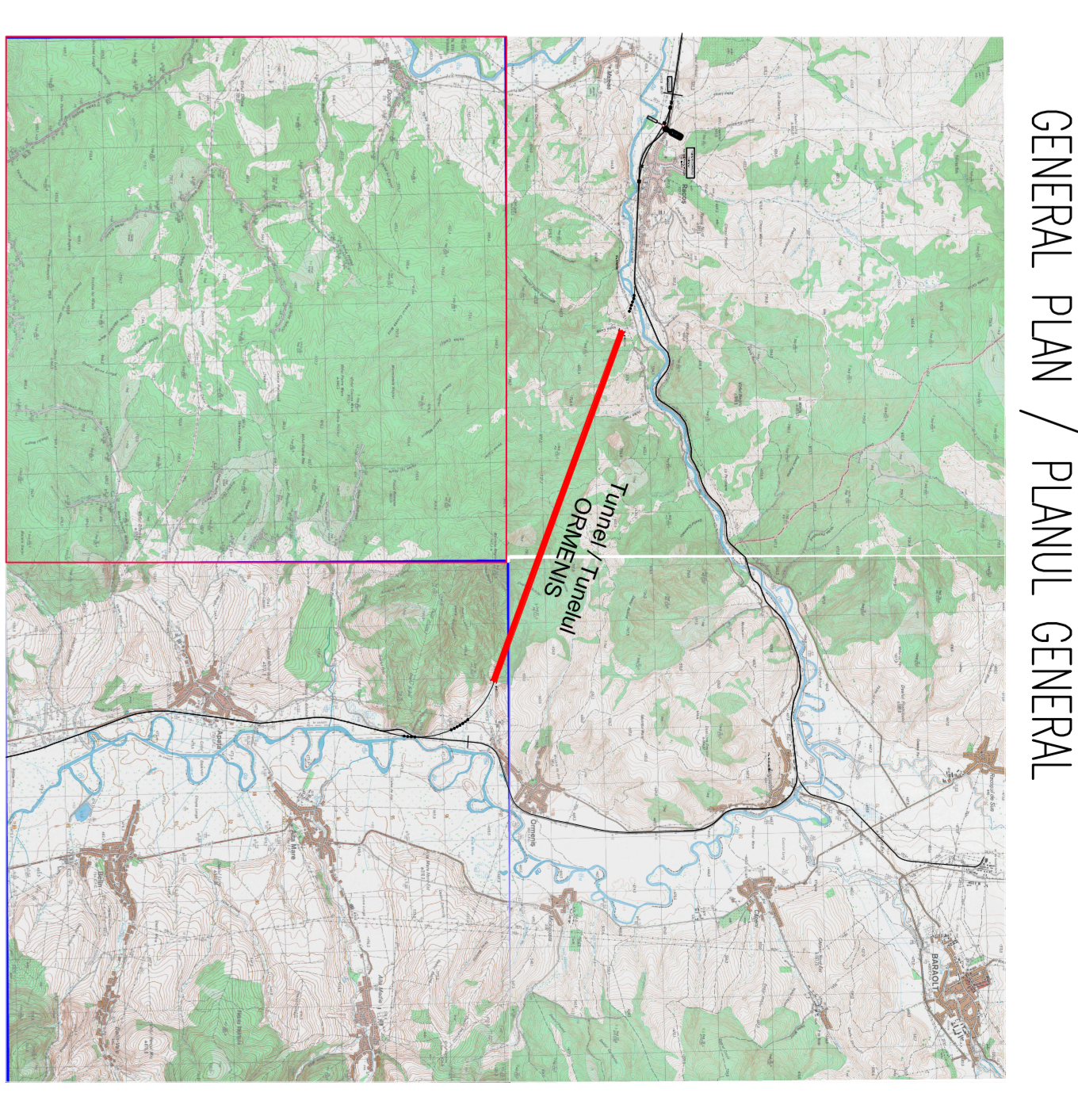
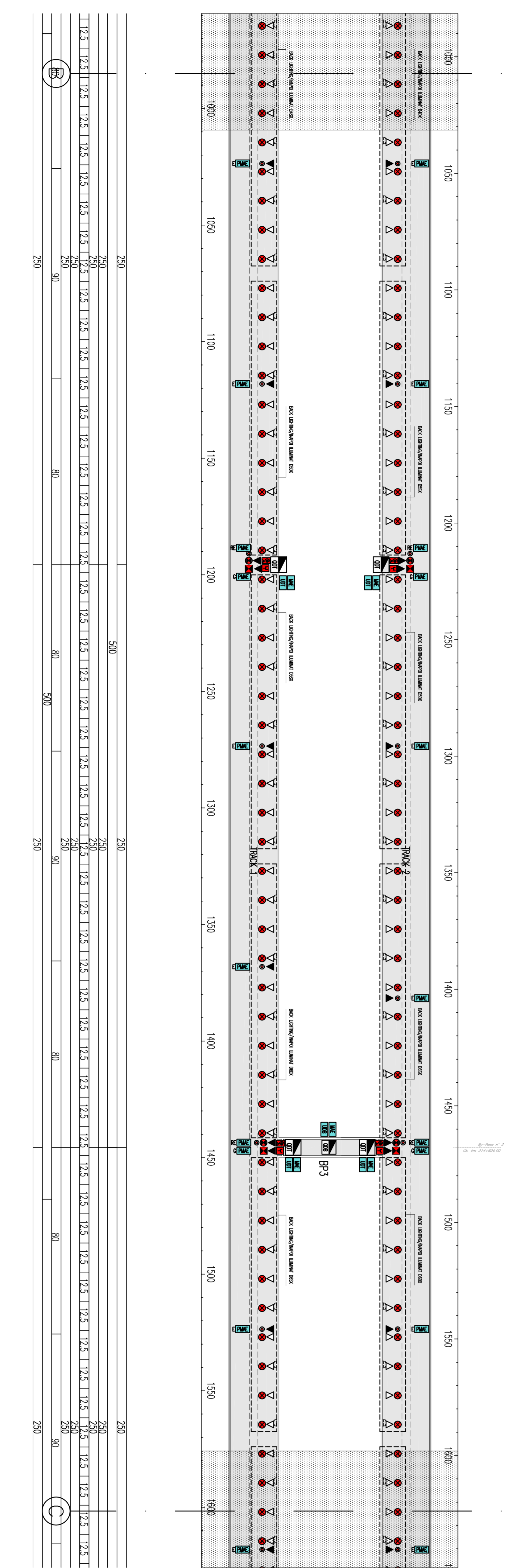
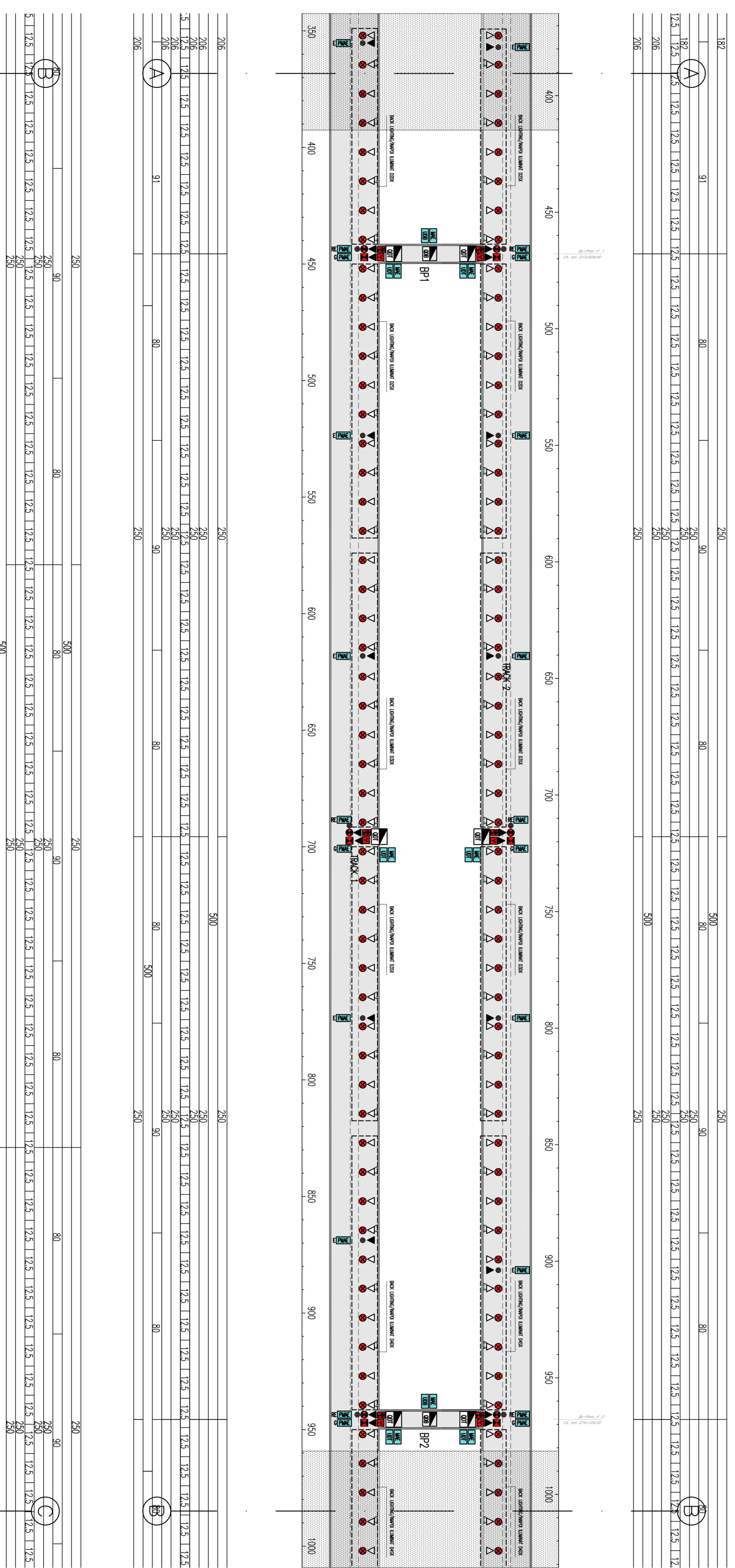
FIGURA 2/25 - PLANUL GENERAL

100	261
200	261
300	261
400	261
500	261
600	261
700	261
800	261
900	261
1000	261
1100	261
1200	261
1300	261
1400	261
1500	261
1600	261
1700	261
1800	261
1900	261
2000	261
2100	261
2200	261
2300	261
2400	261
2500	261
2600	261
2700	261
2800	261
2900	261
3000	261
3100	261
3200	261
3300	261
3400	261
3500	261
3600	261
3700	261
3800	261
3900	261
4000	261



LEGENDA / LEGENDA SIMBOLURI

(Symbol)	Electrical Panel of Brass/Electronic Panel
(Symbol)	Electrical Panel of Brass/Electronic Panel of Zone Above
(Symbol)	Section/Electronic Panel of Section
(Symbol)	Section/Electronic Panel of Section
(Symbol)	Switch with Indicator Light/Switch or Indicator Lumines
(Symbol)	NZ Sockets 230 V for Fire Bridge/NZ Prize 230 V pentru Pomperii
(Symbol)	Projector on Tripod with Double Reel Coil (200 W) for Emergency Lighting (1000 W)/Proector PE Triped cu Rola Bobina (200 W) Pentru Lumina de Urgenta
(Symbol)	Light Fixtures 1x18 W Emergency Lighting/Programme de Lumina 1x18 W Lumina de Urgenta
(Symbol)	Light Fixtures 1x18 W Reference Lighting/Programme de Lumina 1x18 W Lumina de Referinta
(Symbol)	Light Fixtures 1x26 W General Lighting/Programme de Lumina 1x26 W Lumina Generala
(Symbol)	Light Fixtures Point of Exposure/Programme de Lumina Punctul de
(Symbol)	Signal Fixtures Point of Exposure/Programme de Lumina Punctul de
(Symbol)	Junction Box Type A/Junction Box TP A
(Symbol)	Junction Box Type B/Junction Box TP B
(Symbol)	Emergency Management Signals Road GSM E/GR GSM-R
(Symbol)	Expansion of Schematic Signal Road GSM E/GR GSM-R
(Symbol)	Grounding of Sheet/E/MPH/Parabola of Schemata - TELME
(Symbol)	Unit P.C. in QDI/Unitatea P.C. in QDI
(Symbol)	Unit P.C. Bypass/Unitatea P.C. Bypass
(Symbol)	Mobile Analog External/Modulul Analog Externe (MAE)
(Symbol)	Fireproof Device/Periferic Inerovat (ME)
(Symbol)	Emergency Light Button/Rezerva/Lumina Bifunctionali
(Symbol)	General Lighting/Lumina Generala (LUMI)
(Symbol)	Brass-Nickel/Lamp de Referinta/Brass-NickS



GENERAL PLAN / PLANUL GENERAL

SYMBOLS / LEGENDA SIMBOLURI

(Symbol)	ELECTRICAL PANEL/ELECTRICE PANEL
(Symbol)	ELECTRICAL PANEL OF SHIF AREA/ELECTRICE PANEL DE ZONA SOBORA
(Symbol)	ELECTRICAL PANEL OF SECTION/ELECTRICE PANEL DE SECTIUNE
(Symbol)	ELECTRICAL PANEL OF BRASS/ELECTRICE PANEL DE BRASS
(Symbol)	SWITCH WITH INDICATOR LIGHT/SWITCH CU INDICATOR LUMINES
(Symbol)	NZ SOCKETS 230 V FOR FIRE BRIDGE/NZ PRIZE 230 V PENTRU POMPERII
(Symbol)	PROJECTOR ON TRIPOD WITH DOUBLE REEL COIL (200 W) FOR EMERGENCY LIGHTING (1000 W)/PROECTOR PE TRIPEDE CU ROLA BOBINA (200 W) PENTRU LUMINA DE URGENTA
(Symbol)	LIGHT FIXTURES 1X18 W EMERGENCY LIGHTING/PROGRAMME DE LUMINA 1X18 W LUMINA DE URGENTA
(Symbol)	LIGHT FIXTURES 1X18 W REFERENCE LIGHTING/PROGRAMME DE LUMINA 1X18 W LUMINA DE REFERINTA
(Symbol)	LIGHT FIXTURES 1X26 W GENERAL LIGHTING/PROGRAMME DE LUMINA 1X26 W LUMINA GENERALA
(Symbol)	LIGHT FIXTURES POINT OF EXPOSURE/PROGRAMME DE LUMINA PUNCTUL DE
(Symbol)	SIGNAL FIXTURES POINT OF EXPOSURE/PROGRAMME DE LUMINA PUNCTUL DE
(Symbol)	JUNCTION BOX TYPE A/JUNCTION BOX TP A
(Symbol)	JUNCTION BOX TYPE B/JUNCTION BOX TP B
(Symbol)	EMERGENCY MANAGEMENT SIGNALS ROAD GSM E/GR GSM-R
(Symbol)	EXPANSION OF SCHEMATIC SIGNAL ROAD GSM E/GR GSM-R
(Symbol)	GROUNDING OF SHEET/E/MPH/PARABOLA DE SCHEMATA - TELME
(Symbol)	UNIT P.C. IN QDI/UNITATEA P.C. IN QDI
(Symbol)	UNIT P.C. BYPASS/UNITATEA P.C. BYPASS
(Symbol)	MOBILE ANALOG EXTERNAL/MODULUL ANALOG EXTERNE (MAE)
(Symbol)	FIREPROOF DEVICE/PERIFERIC INEROVATI (ME)
(Symbol)	EMERGENCY LIGHT BUTTON/REZERVA/LUMINA BIFUNCTIONALI
(Symbol)	GENERAL LIGHTING/LUMINA GENERALA (LUMI)
(Symbol)	R - LAMPS OF REFERENCE BRASS-NICKEL/LAMP DE REFERINTA/BRASS-NICKS

NOTE:
- AEREA SCHEMI IN THE NEXT / PREVIOUS SHEET
- ZONA PREZENTATA IN PACHETUL LUMINTOARE / ANTROPARA

CLIENT / CLIENT: CN.C.F. "C.F.R." - S.A.

CONSULTANT / CONSULTANT: OBERMEYER CONSULTING

PROIECTANT / SUBCONSULTANT: TEHNIC CONSULTING

REABILITAREA LINEI DE CALD RAZINA BOLZAV - SECTIUNEA PARTII COMPARTIMENTA A CONTINUTUL IV PARTI EUROPEAN, PER SECTIUNEA I BOLZAV - SECTIUNEA I BOLZAV

REABILITAREA LINEI DE CALD RAZINA BOLZAV - SECTIUNEA PARTII COMPARTIMENTA A CONTINUTUL IV PARTI EUROPEAN, PER SECTIUNEA I BOLZAV - SECTIUNEA I BOLZAV

Dimensiune desen / Drawing Title: TUNELUL GENERAL ORMEINS

Scara / Scale: 1:100

Condition / Conditions System: 1:100

DATE: 10.12.2020

Detailed technical information and contact details for the consultant and client.