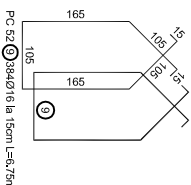
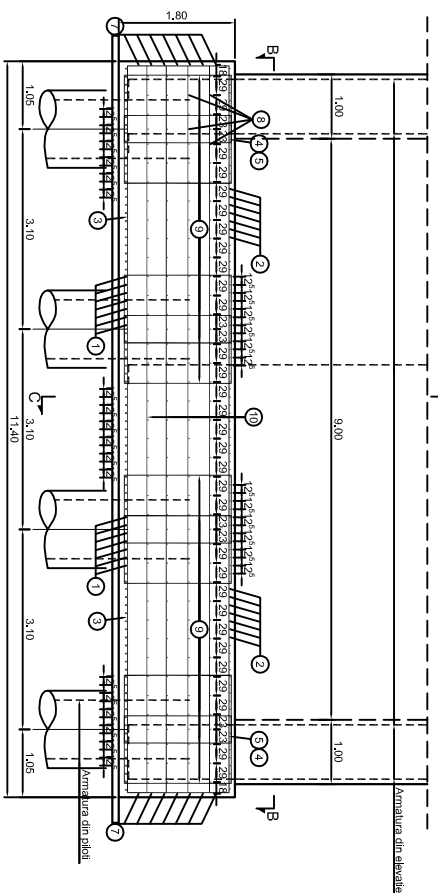
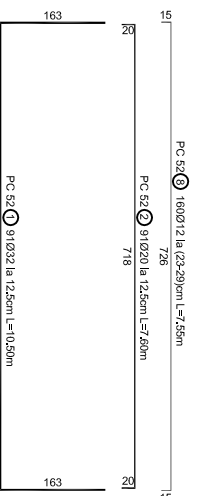
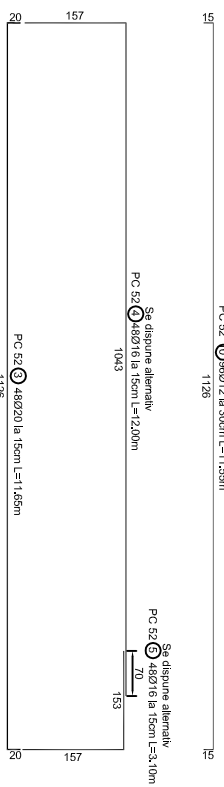
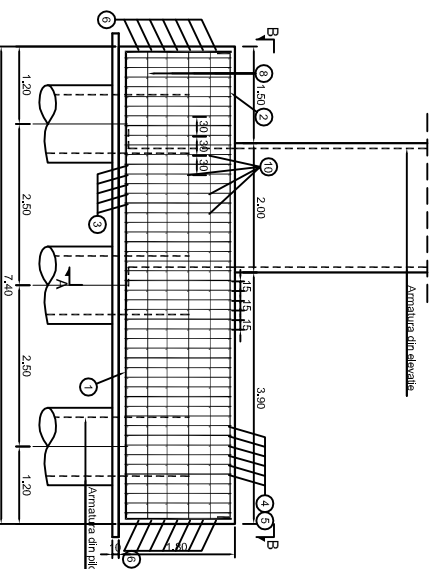


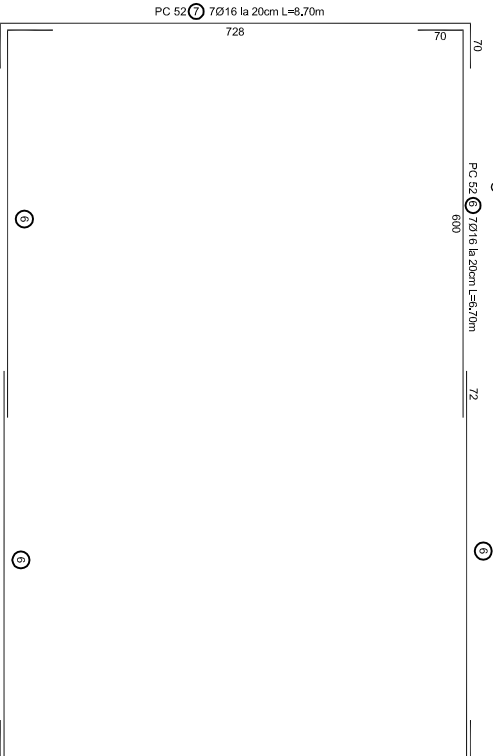
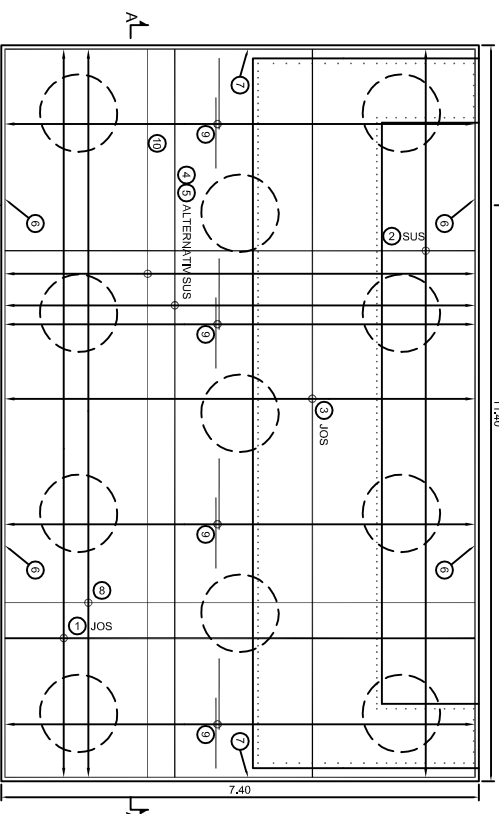
SECȚIUNE A-A



SECȚIUNE C-C



SECȚIUNE B-B



EXTRAS DE ARMATURA PENTRU UN RADIER

MARKA	DIAMETRUL BAREI	NR DE FIBRANTE	TR. DEC. BARE	4. ELEMENTE	5. ELEMENTE	LUNGIMEA BAREI	OTEL	PC 52		
1	2	3	4	5	6	7	8	9		
1	10.5	1	9'	91	6.57	555.5	631.6	437		
2	10.5	1	9'	91	7.60	709.2	776.9	437		
3	10.5	1	9'	91	11.65	1165.0	1240.0	437		
4	10.5	1	9'	91	15.67	1567.0	1642.0	437		
5	10.5	1	9'	91	19.67	1967.0	2042.0	437		
6	10.5	1	9'	91	23.67	2367.0	2442.0	437		
7	10.5	1	9'	91	27.67	2767.0	2842.0	437		
8	10.5	1	9'	91	31.67	3167.0	3242.0	437		
9	10.5	1	9'	91	35.67	3567.0	3642.0	437		
10	10.5	1	9'	91	39.67	3967.0	4042.0	437		
CAPITULAT (FIBRANTE/AGRI)							520.5	1240.0	3052.0	22716.6
CAPITULAT (FIBRANTE/AGRI)							520.5	1240.0	3052.0	22716.6
CERTIFICATE TOTALA (kg)							4032	3085	5723	2029
TOTAL (kg)							16899			

TOTAL ARMATURA PENTRU OPT RADIERE
PC 52: 8 x 16899 kg = 135192 kg

PC 52

This drawing is forbidden to be copied, lent or used in other purposes than those previously approved by ARES Lider Company as its owner. Se interzice copierea, difuzarea, imprumutarea sau utilizarea in alte scopuri, fara permisiunea ARES Lider Company ca proprietar al desenului.

Indice	Data	Modificare	Proiectant	Aprobat Consultant	Aprobat CFR
D					
C					
B					
A					



GUVERNUL ROMANIEI
ROMANIAN GOVERNMENT



PROIECT FINANȚAT DE UNIUNEA EUROPEANĂ
EUROPEAN UNION FINANCED PROJECT

CLIENT / CLIENT



C.N.C.F. "C.F.R." - S.A.

GRUPPO FERROVIE DELLO STATO
Joint Venture leader



OBERMEYER
FLAMEN + BERATEN GmbH

TECNIC
Consulting Engineers

CONSULTANT / CONSULTANT

Approbat	Self project	R. Liuzza	Data	Semnătură
Approved	Project manager			
Approved	Coordinator Section 1	C. Gambelli		
Verificat	Expert Cheie	V. Kallidromitis		
Checked	Checking Expert			

SUBCONTRACTANT / SUBCONTRACTOR



Approbat	Responsabil Subcontractant	A. Dinulescu Stanciu	Data	Semnătură
Approved	Subcontractant Responsible		11.2011	
Intocmit	Projectant	Ionela Ungureanu	11.2011	
Elaborated	Designer			

Reabilitarea liniei de cale ferata Braşov - Simeria, parte componentă a coridorului IV Pan European, pentru circulația trenurilor cu viteză maximă de 160 km/h,
Tronsonul : Braşov - Sighişoara
Rehabilitation of the railway line Braşov - Simeria, component Part of the IV Pan-European Corridor, for the trains circulation with maximum speed of 160 km/h,
Section : Braşov - Sighişoara

Denumire desen / Drawing Title :

INTERVAL / SECTION APATA - RACOS
PASAU SUPERIOR / OVER PASS - KM 208+405.181
PLAN ARMARE RADIER CULEE / ABUTMENT FOUNDATION REINFORCEMENT PLAN

Codificare / Codification System	Scara / Scale	LOT / LOT	Nr. / No
E A 5 1 0 1 E 1 0 B C P A 0 0 2 1 0 1 9 0	1:100		01 / 01