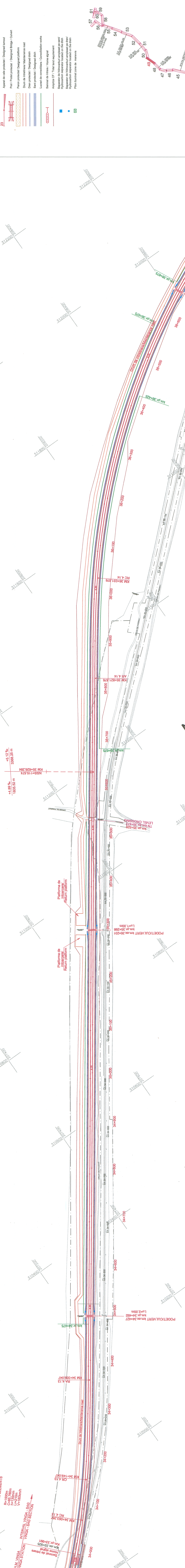


**LEGENDA / LEGEND**

	Ax.c.1. existent / Existing railway side
	Aparat de cale existent / Existing turnout
	Limita C.F.R. / C.F.R. limit
	Ax.c.1. proiectat / Designed railway side
	Aparat de cale proiectat / Designed turnout
	Pod / Podul proiectat / Designed platform
	Drum de intretinere / Maintenance road
	Dren proiectat / Designed drain
	Sant proiectat / Designed ditch
	Lucrari de consolidare / Consolidation works
	Semnal de intrare / Home signal
	Ampriza CF / Total land requirement
	Separator de hidrocarburi amplasat pe sant / Separator of hydrocarbon located on the ditch
	Separator de hidrocarburi amplasat pe dren / Separator of hydrocarbon located on the drain
	Separator de hidrocarburi amplasat pe dren / Separator of hydrocarbon located on the drain
	Pilon luminat zone de manouver



**PROIECTANT GENERAL / GENERAL DESIGNER**

Project / Designed	Project / Modified	Project / Verified	Project / Checked
Project / Checked	Project / Checked	Project / Checked	Project / Checked
Project / Checked	Project / Checked	Project / Checked	Project / Checked
Project / Checked	Project / Checked	Project / Checked	Project / Checked

**BENEFICIAR / BENEFICIARY**

COMPANIA NAZIONALA DE CALFEREA

INDICATOR / Indicator: Data / Date, Modificari / Modifications, Verificat / Verified, Semnat / Signed

**PROIECTANT DE SPECIALITATE / SPECIALIZED DESIGNER**

Project / Designed	Project / Modified	Project / Verified	Project / Checked
Project / Checked	Project / Checked	Project / Checked	Project / Checked
Project / Checked	Project / Checked	Project / Checked	Project / Checked
Project / Checked	Project / Checked	Project / Checked	Project / Checked

**PLAN DE SITUATIE / LAYOUT PLAN**

INTERVALUL DE PROIECTARE / DESIGN INTERVAL: KM 34+000 - KM 38+600

**DENUMIREA LUCRARI / PROJECT TITLE**

STUDIUL DE FEZABILITATE PENTRU MODERNIZAREA LINIEI FEROVIARE CASABANESSE - TIMISOARA - ARAD

**FEBILITY STUDY FOR MODERNIZATION OF THE RAILWAY LINE CASABANESSE - TIMISOARA - ARAD**

**PROIECTANT GENERAL / GENERAL DESIGNER**

**CONSIS PROJECT**

R.C.:40/3940/1995

**PROIECTANT GENERAL / GENERAL DESIGNER**

Project / Designed	Project / Modified	Project / Verified	Project / Checked
Project / Checked	Project / Checked	Project / Checked	Project / Checked
Project / Checked	Project / Checked	Project / Checked	Project / Checked
Project / Checked	Project / Checked	Project / Checked	Project / Checked

**PROIECTANT GENERAL / GENERAL DESIGNER**

Project / Designed	Project / Modified	Project / Verified	Project / Checked
Project / Checked	Project / Checked	Project / Checked	Project / Checked
Project / Checked	Project / Checked	Project / Checked	Project / Checked
Project / Checked	Project / Checked	Project / Checked	Project / Checked

**PROIECTANT GENERAL / GENERAL DESIGNER**

Project / Designed	Project / Modified	Project / Verified	Project / Checked
Project / Checked	Project / Checked	Project / Checked	Project / Checked
Project / Checked	Project / Checked	Project / Checked	Project / Checked
Project / Checked	Project / Checked	Project / Checked	Project / Checked

**PROIECTANT GENERAL / GENERAL DESIGNER**

Project / Designed	Project / Modified	Project / Verified	Project / Checked
Project / Checked	Project / Checked	Project / Checked	Project / Checked
Project / Checked	Project / Checked	Project / Checked	Project / Checked
Project / Checked	Project / Checked	Project / Checked	Project / Checked

**ELEMENTELE CURBEI C 4.13**

CURVE C 4.13 ELEMENTS

R=1500m  
C=85.780m  
L=130m  
V=160km/h

**INTERVAL VINGA - SAG SECTION**

VINGA STATION

H.M. VINGA

Semnal de intrare / Home signal

Km.ex.33+991

**PODET/CULVERT** km.ex.35+231

Lu=1.00m

**PLATFORMA DE INTARCARE / RETURN PLATFORM**

Platforma de intarcare / Return platform

**PODET/CULVERT** km.ex.34+427

Lu=2.00m

**PODET/CULVERT** km.ex.35+427

Lu=2.00m

**PODET/CULVERT** km.ex.35+231

Lu=1.00m

**PODET/CULVERT** km.ex.35+231

Lu=1.00m

**PODET/CULVERT** km.ex.35+231

Lu=1.00m

**PODET/CULVERT** km.ex.35+231

Lu=1.00m

**PODET/CULVERT** km.ex.35+231

Lu=1.00m

**PODET/CULVERT** km.ex.35+231

Lu=1.00m

**PODET/CULVERT** km.ex.35+231

Lu=1.00m

**PODET/CULVERT** km.ex.35+231

Lu=1.00m

**PODET/CULVERT** km.ex.35+231

Lu=1.00m

**PODET/CULVERT** km.ex.35+231

Lu=1.00m

**PODET/CULVERT** km.ex.35+231

Lu=1.00m

**PODET/CULVERT** km.ex.35+231

Lu=1.00m

**PODET/CULVERT** km.ex.35+231

Lu=1.00m

**PODET/CULVERT** km.ex.35+231

Lu=1.00m

**PODET/CULVERT** km.ex.35+231

Lu=1.00m

**PODET/CULVERT** km.ex.35+231

Lu=1.00m

**PODET/CULVERT** km.ex.35+231

Lu=1.00m

**PODET/CULVERT** km.ex.35+231

Lu=1.00m

**PODET/CULVERT** km.ex.35+231

Lu=1.00m

**PODET/CULVERT** km.ex.35+231

Lu=1.00m

**PODET/CULVERT** km.ex.35+231

Lu=1.00m

**PODET/CULVERT** km.ex.35+231

Lu=1.00m

**PODET/CULVERT** km.ex.35+231

Lu=1.00m

**PODET/CULVERT** km.ex.35+231

Lu=1.00m

**PODET/CULVERT** km.ex.35+231

Lu=1.00m

**PODET/CULVERT** km.ex.35+231

Lu=1.00m

**PODET/CULVERT** km.ex.35+231

Lu=1.00m

**PODET/CULVERT** km.ex.35+231

Lu=1.00m

**PODET/CULVERT** km.ex.35+231

Lu=1.00m

**PODET/CULVERT** km.ex.35+231

Lu=1.00m

**PODET/CULVERT** km.ex.35+231

Lu=1.00m

**PODET/CULVERT** km.ex.35+231

Lu=1.00m

**PODET/CULVERT** km.ex.35+231

Lu=1.00m

**PODET/CULVERT** km.ex.35+231

Lu=1.00m

**PODET/CULVERT** km.ex.35+231

Lu=1.00m

**PODET/CULVERT** km.ex.35+231

Lu=1.00m

**PODET/CULVERT** km.ex.35+231

Lu=1.00m

**PODET/CULVERT** km.ex.35+231

Lu=1.00m

**PODET/CULVERT** km.ex.35+231

Lu=1.00m

**PODET/CULVERT** km.ex.35+231

Lu=1.00m

**PODET/CULVERT** km.ex.35+231

Lu=1.00m

**PODET/CULVERT** km.ex.35+231

Lu=1.00m

**PODET/CULVERT** km.ex.35+231

Lu=1.00m

**PODET/CULVERT** km.ex.35+231

Lu=1.00m

**PODET/CULVERT** km.ex.35+231

Lu=1.00m

**PODET/CULVERT** km.ex.35+231

Lu=1.00m

**PODET/CULVERT** km.ex.35+231

Lu=1.00m

**PODET/CULVERT** km.ex.35+231

Lu=1.00m

**PODET/CULVERT** km.ex.35+231

Lu=1.00m

**PODET/CULVERT** km.ex.35+231

Lu=1.00m

**PODET/CULVERT** km.ex.35+231

Lu=1.00m

**PODET/CULVERT** km.ex.35+231

Lu=1.00m

**PODET/CULVERT** km.ex.35+231

Lu=1.00m

**PODET/CULVERT** km.ex.35+231

Lu=1.00m

**PODET/CULVERT** km.ex.35+231

Lu=1.00m

**PODET/CULVERT** km.ex.35+231

Lu=1.00m

**PODET/CULVERT** km.ex.35+231

Lu=1.00m

**PODET/CULVERT** km.ex.35+231

Lu=1.00m

**PODET/CULVERT** km.ex.35+231

Lu=1.00m

**PODET/CULVERT** km.ex.35+231

Lu=1.00m

**PODET/CULVERT** km.ex.35+231

Lu=1.00m

**PODET/CULVERT** km.ex.35+231

Lu=1.00m

**PODET/CULVERT** km.ex.35+231

Lu=1.00m

**PODET/CULVERT** km.ex.35+231

Lu=1.00m

**PODET/CULVERT** km.ex.35+231

Lu=1.00m

**PODET/CULVERT** km.ex.35+231

Lu=1.00m

**PODET/CULVERT** km.ex.35+231

Lu=1.00m

**PODET/CULVERT** km.ex.35+231

Lu=1.00m

**PODET/CULVERT** km.ex.35+231

Lu=1.00m

**PODET/CULVERT** km.ex.35+231

Lu=1.00m

**PODET/CULVERT** km.ex.35+231

Lu=1.00m

**PODET/CULVERT** km.ex.35+231

Lu=1.00m

**PODET/CULVERT** km.ex.35+231

Lu=1.00m

**PODET/CULVERT** km.ex.35+231

Lu=1.00m

**PODET/CULVERT** km.ex.35+231

Lu=1.00m

**PODET/CULVERT** km.ex.35+231

Lu=1.00m

**PODET/CULVERT** km.ex.35+231

Lu=1.00m

**PODET/CULVERT** km.ex.35+231

Lu=1.00m

**PODET/CULVERT** km.ex.35+231

Lu=1.00m

**PODET/CULVERT** km.ex.35+231

Lu=1.00m

**PODET/CULVERT** km.ex.35+231

Lu=1.00m

**PODET/CULVERT** km.ex.35+231

Lu=1.00m

**PODET/CULVERT** km.ex.35+231

Lu=1.00m

**PODET/CULVERT** km.ex.35+231

Lu=1.00m

**PODET/CULVERT** km.ex.35+231

Lu=1.00m

**PODET/CULVERT** km.ex.35+231

Lu=1.00m

**PODET/CULVERT** km.ex.35+231

Lu=1.00m

**PODET/CULVERT** km.ex.35+231

Lu=1.00m

**PODET/CULVERT** km.ex.35+231

Lu=1.00m

**PODET/CULVERT** km.ex.35+231

Lu=1.00m

**PODET/CULVERT** km.ex.35+231

Lu=1.00m

**PODET/CULVERT** km.ex.35+231

Lu=1.00m

**PODET/CULVERT** km.ex.35+231

Lu=1.00m

**PODET/CULVERT** km.ex.35+231

Lu=1.00m

**PODET/CULVERT** km.ex.35+231

Lu=1.00m

**PODET/CULVERT** km.ex.35+231

Lu=1.00m

**PODET/CULVERT** km.ex.35+231

Lu=1.00m

**PODET/CULVERT** km.ex.35+231

Lu=1.00m

**PODET/CULVERT** km.ex.35+231

Lu=1.00m

**PODET/CULVERT** km.ex.35+231

Lu=1.00m

**PODET/CULVERT** km.ex.35+231

Lu=1.00m

**PODET/CULVERT** km.ex.35+231

Lu=1.00m

**PODET/CULVERT** km.ex.35+231

Lu=1.00m

**PODET/CULVERT** km.ex.35+231

Lu=1.00m

**PODET/CULVERT** km.ex.35+231

Lu=1.00m

**PODET/CULVERT** km.ex.35+231

Lu=1.00m

**PODET/CULVERT** km.ex.35+231

Lu=1.00m

**PODET/CULVERT** km.ex.35+231

Lu=1.00m

**PODET/CULVERT** km.ex.35+231

Lu=1.00m

**PODET/CULVERT** km.ex.35+231

Lu=1.00m

**PODET/CULVERT** km.ex.35+231

Lu=1.00m

**PODET/CULVERT** km.ex.35+231

Lu=1.00m

**PODET/CULVERT** km.ex.35+231

Lu=1.00m

**PODET/CULVERT** km.ex.35+231

Lu=1.00m

**PODET/CULVERT** km.ex.35+231

Lu=1.00m

**PODET/CULVERT** km.ex.35+231

Lu=1.00m

**PODET/CULVERT** km.ex.35+231

Lu=1.00m

**PODET/CULVERT** km.ex.35+231

Lu=1.00m

**PODET/CULVERT** km.ex.35+231

Lu=1.00m

**PODET/CULVERT** km.ex.35+231

Lu=1.00m

**PODET/CULVERT** km.ex.35+231

Lu=1.00m

**PODET/CULVERT** km.ex.35+231

Lu=1.00m

**PODET/CULVERT** km.ex.35+231

Lu=1.00m

**PODET/CULVERT** km.ex.35+231

Lu=1.00m

**PODET/CULVERT** km.ex.35+231

Lu=1.00m

**PODET/CULVERT** km.ex.35+231

Lu=1.00m

**PODET/CULVERT** km.ex.35+231

Lu=1.00m

**PODET/CULVERT** km.ex.35+231

Lu=1.00m

**PODET/CULVERT** km.ex.35+231

Lu=1.00m

**PODET/CULVERT** km.ex.35+231

Lu=1.00m