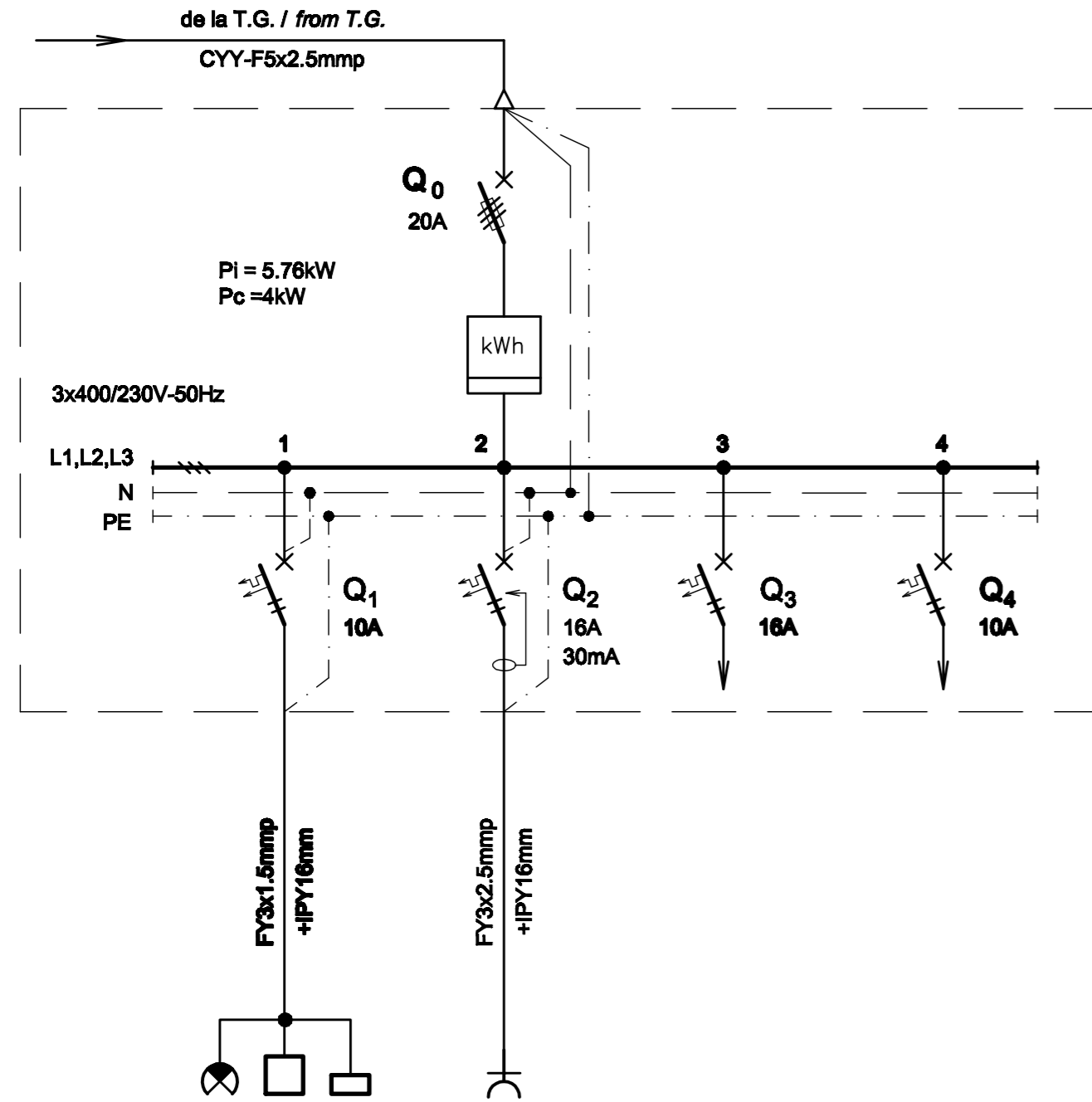


**TABLOU SPATIU COMERCIAL T<sub>Sp.com.</sub> - SCHEMA MONOFILARA**  
**T<sub>Sp.com.</sub> COMMERCIAL AREA BOARD - SINGLE-WIRE DIAGRAM**



Nr. circuit Circuit number	1	2	3	4
PI [kW]	0.76	2	2	1
Destinația Destination	SNACK, DEPOZIT SNACK, STORAGE ROOM 9LL / Lamps	DEPOZIT STORAGE ROOM 3LP / Sockets outlet	REZERVA MONOFAZATA SINGLE-PHASE RESERVE	REZERVA MONOFAZATA SINGLE-PHASE RESERVE

**TABLOU SPATIU COMERCIAL T<sub>Sp.com.</sub> - SPECIFICATIE DE APARATAJ**  
**T<sub>Sp.com.</sub> COMMERCIAL AREA BOARD - EQUIPMENT SPECIFICATION**

Nr. No.	Symbol	Denumirea aparatului Equipment denomination	Caracteristici tehnice Technical data	Buc. Pcs.	Observatii Remarks
0	1			4	
1	Q0	Separator de sarcina tripolar cu fuzibil / Three-poles switch-disconnectors with fusible	In=20A Un=400V Uimp=8kV f=50Hz Icm=2,2kA	1	
2	Q1,Q4	Intrerupator automat bipolar, curba B / Two-poles circuit breaker, curve B	In=10A Un=230V Icu=6kA f=50Hz	2	
3	Q2	Intrerupator automat bipolar cu protectie la curent diferential rezidual, curba C / Two-poles circuit breaker with protection at residual differential current device, curve C	In=16A Un=230V Icu=6kA f=50Hz IΔn=0,03A Tip A Nivel de imunitate 250A la forma de unda 8/20 μS Level of immunity 250A to wave form 8/20 μS	1	
4	Q3	Intrerupator automat bipolar, curba C / Two-poles circuit breaker, curve C	In=16A Un=230V Icu=6kA f=50Hz	1	
5	-	Contor trifazat de energie activa / Three-phase active energy counter	In=25A Un=400V Clasa I / Class I f=50Hz	1	
6	-	Cutie / Box	IP30, Clasa I / Class I	1	

Indice Index	Data Date	Modificare Modification/Revision	Proiectant Designer	Aprobat Consultant Approved Consultant	Aprobat CFR Approved CFR
D					
C					
B					
A					



GUVERNUL ROMANIEI  
ROMANIAN GOVERNMENT

PROIECT FINANȚAT DE UNIUNEA EUROPEANĂ  
EUROPEAN UNION FINANCED PROJECT



C.N.C.F. "C.F.R." - S.A.

CLIENT / CLIENT



CONSULTANT / CONSULTANT

Aprobat Approved	Șef proiect Project manager	R. Liuzza	Data Date	Semnătură Signature
Aprobat Approved	Coordonator Secțiune 1 Section 1 Coordinator	C. Gambelli	12.2011	
Verificat Checked	Expert Verificator Checking Expert	G. Fioravanti	12.2011	

SUBCONTRACTANT / SUBCONTRACTOR



Aprobat Approved	Responsabil Subconsultant Subconsultant Responsible	A.Stanciu - Dinulescu	Data Date	Semnătură Signature
Întocmit Elaborated	Proiectant Designer	D. Matei	12.2011	

Reabilitarea liniei de cale ferata Braşov - Simeria, parte componentă a coridorului IV Pan European, pentru circulația trenurilor cu viteza maximă de 160 km/h,  
**Tronsonul : Braşov - Sighişoara**  
 Rehabilitation of the railway line Braşov - Simeria, component Part of the IV Pan-European Corridor, for the trains circulation with maximum speed of 160 km/h,  
**Section : Braşov - Sighişoara**

Proiect/Project  
2004/RO/16/P/PA/003

Faza / Phase:  
D.E. / E.D.

Denumire desen / Drawing Title :

**Tablou electric spațiu comercial T<sub>Sp.com.</sub> - Stația Apata;**  
**Apata station - T<sub>Sp.com.</sub> commercial area electric board**

Codificare / Codification System

Scara / Scale

LOT / LOT

Nr. / No  
01 / 01

E A 5 1 0 1 E 0 9 B X I E 0 0 3 1 0 4 4 1