

NOTA
 Numar de elemente prefabricate
 -Cadre C2 : 12buc
 -Aripi prefabricate A2. 4buc.
 -Timpane prefabricate 2buc

NOTE
 Number of precast section
 -Prefabricated frames C2 12pcs.
 -Prefabricated wings A2 4pcs.
 -Head-wall 2pcs.

DATE HIDRAULICE:
 -Inaltimea de apa: h=0,58m
 -Perimetrul udad: P=3,16m
 -Aria udada: A=1,16m²
 -Viteza de curgere a apei V=2,38m/s

HIDRAULIC DATA:
 -Hydraulic height: h=0,58m
 -Perimeter: P=3,16m
 -surface: A=1,16m²
 -Water flow speed: V=2,38m/s

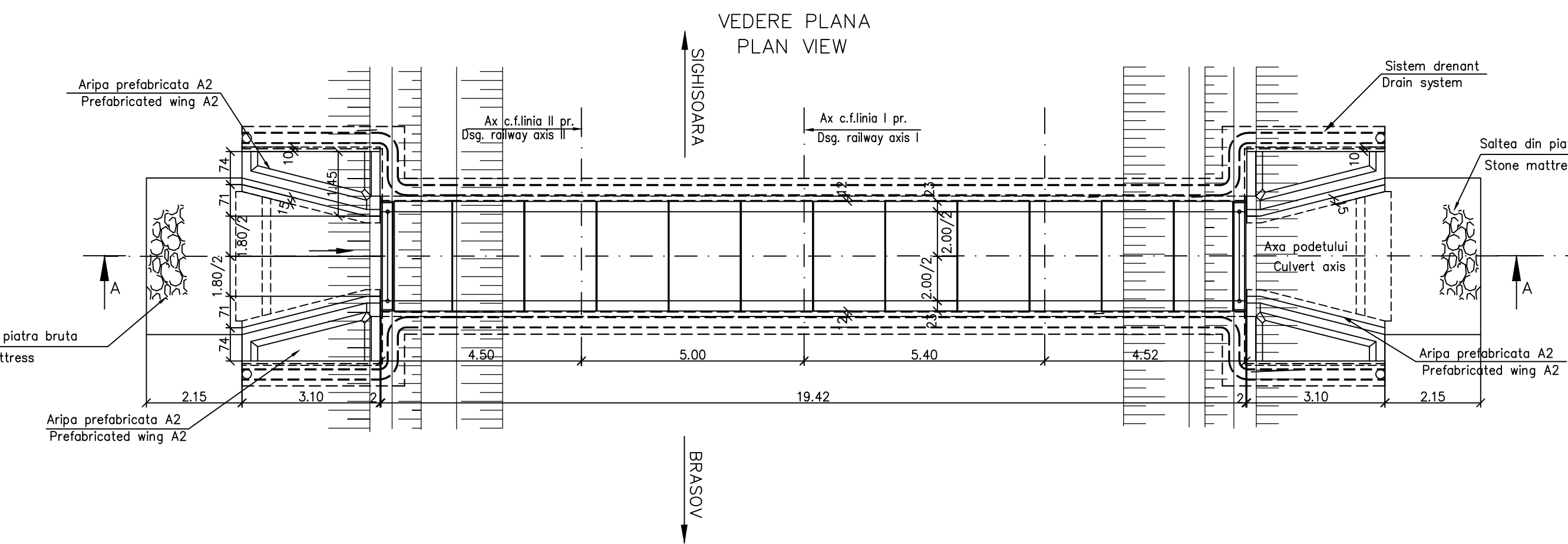
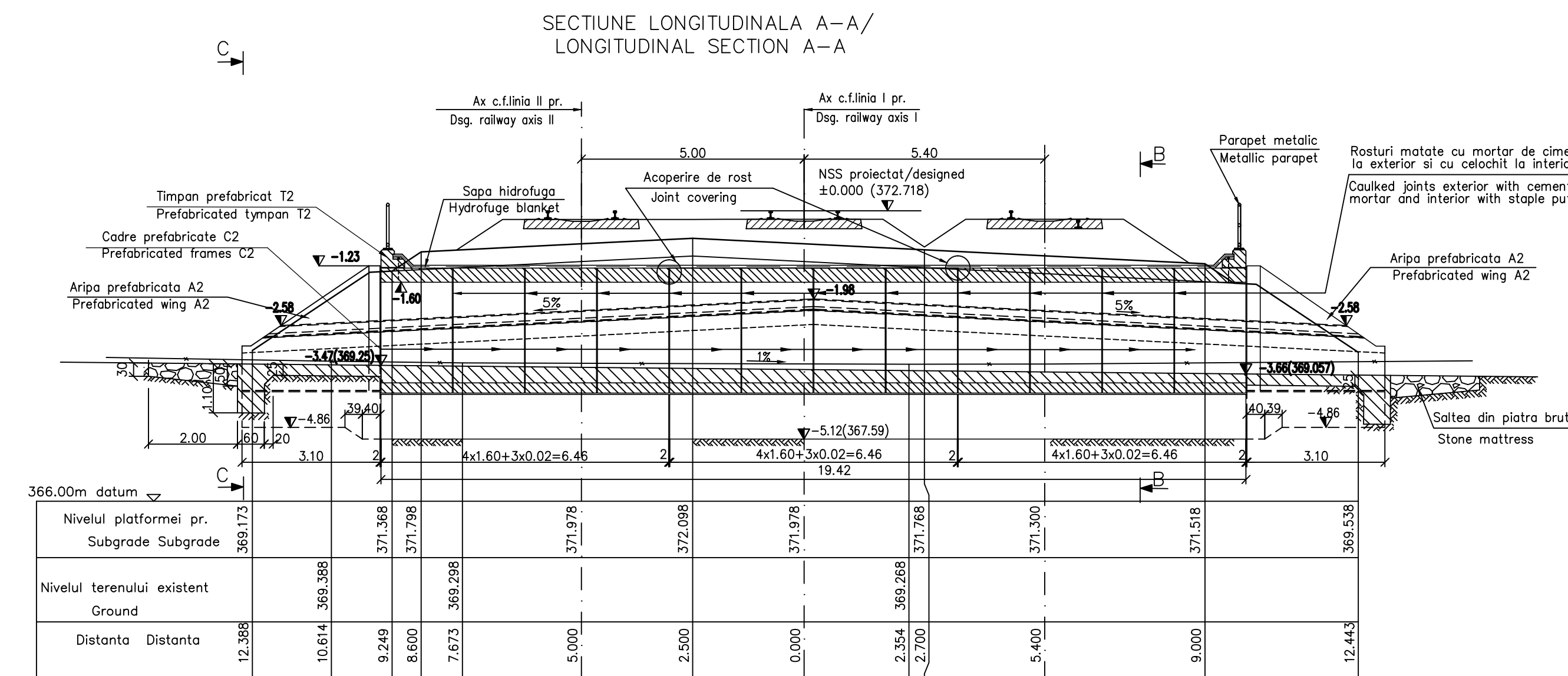
**LEGENDA BETOANELOR
 CONCRETE LIST**

-Beton în elemente prefabricate în general (cadre, aripi, timpane);
 -Concrete for prefabricated elements generally (frames,wings, tympana,
 C 35/45 - CEM II/A - S 32,5 - (XC4+XF3+XA1) - A/C = 0,50 - Dmax22 - Cl 0,20

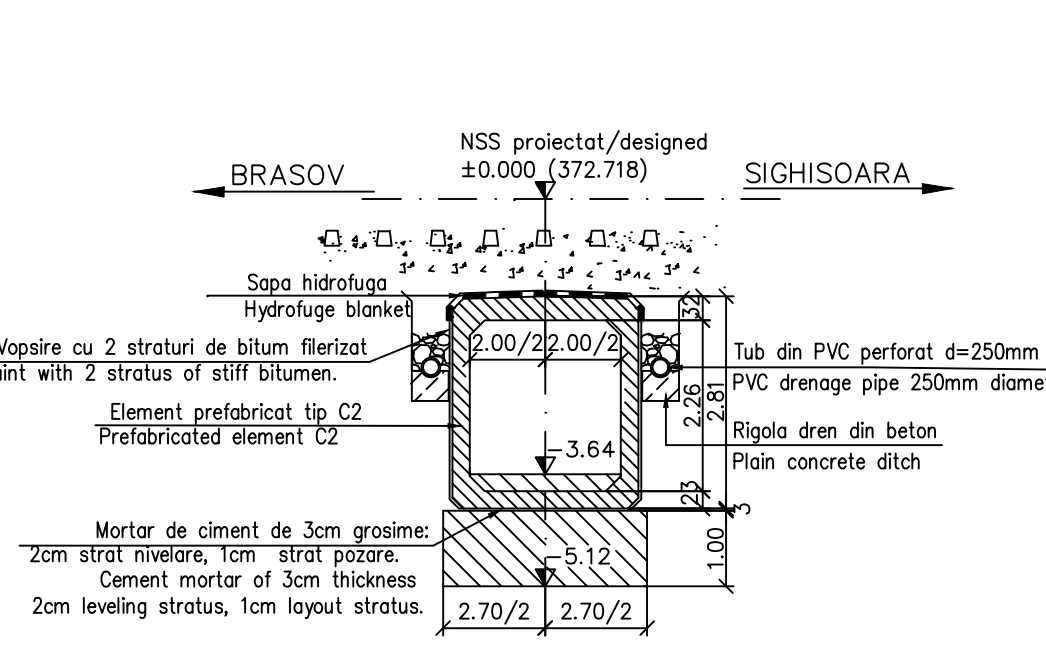
Beton în fundatia podetelor, a elementelor de racordare (aripi, pinteni), în pereu
 Concrete for the foundations of culverts, of connecting elements
 (wings, breakwaters), in pitching
 C25/30-CEM II/A-S 32,5-(XF1)-A/C=0,50-Dmax32-Cl0,20

-Beton în rigola drenurilor, fundatiile sferturilor de con si pentru realizarea stratului suport pentru pereu;
 -Concrete for the drain gutters, for the foundations of cone quarters and for the support layer of revetment;
 C 25/30 - CEM II/A - S 32,5 - (XC4+XF3+XA1) - A/C = 0,50 - Dmax32 - Cl 0,20

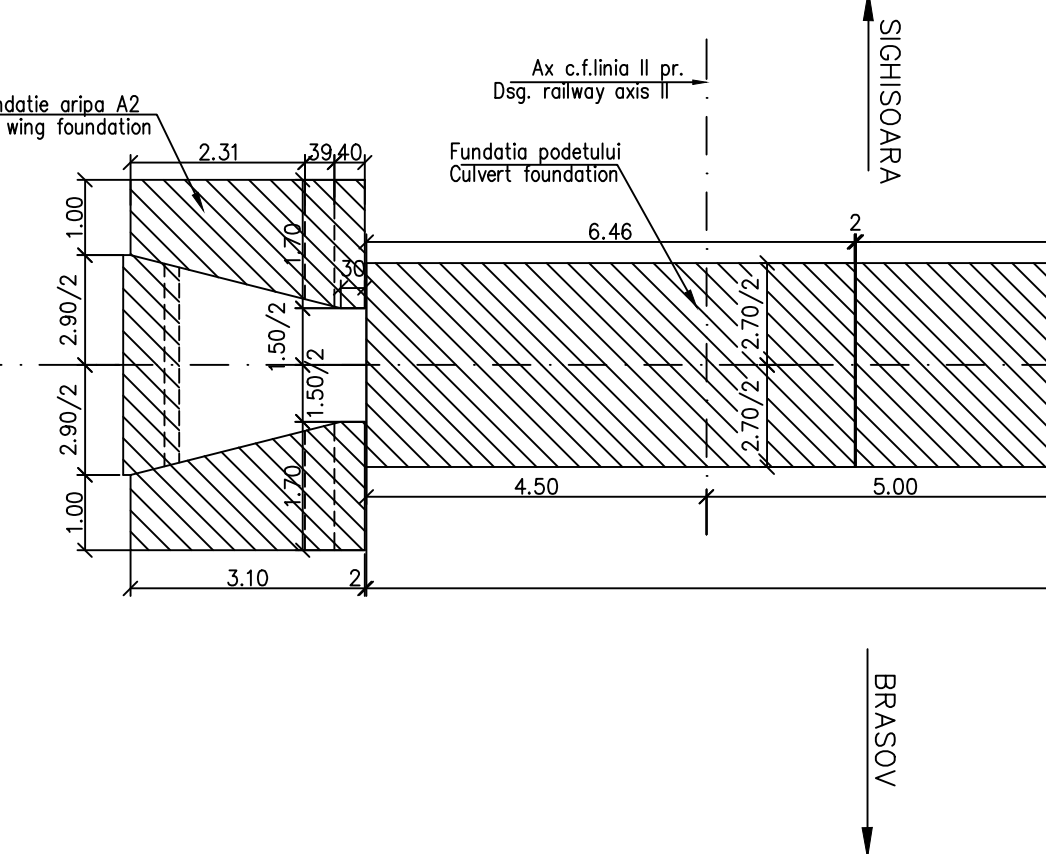
-Beton în stratul de protectie a hidroizolatiei;
 -Concrete for the waterproofing protection layer;
 C 25/30 - CEM II/A - S 32,5 - (XC4+XF3) - A/C = 0,50 - Dmax16 - Cl 0,20



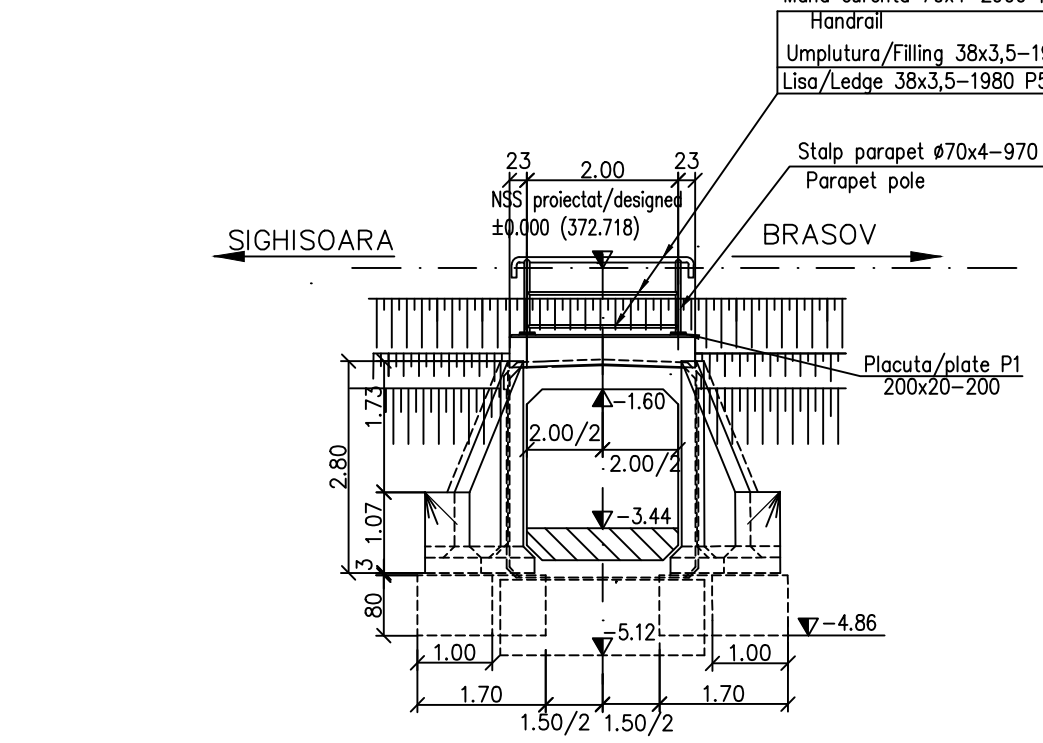
**SECTIUNE TRANSVERSALA B-B
 CROSS SECTION B-B**



**PLANUL FUNDATIILOR
 FOUNDATION PLAN**



**SECTIUNE TRANSVERSALA C-C
 C-C CROSS SECTION**

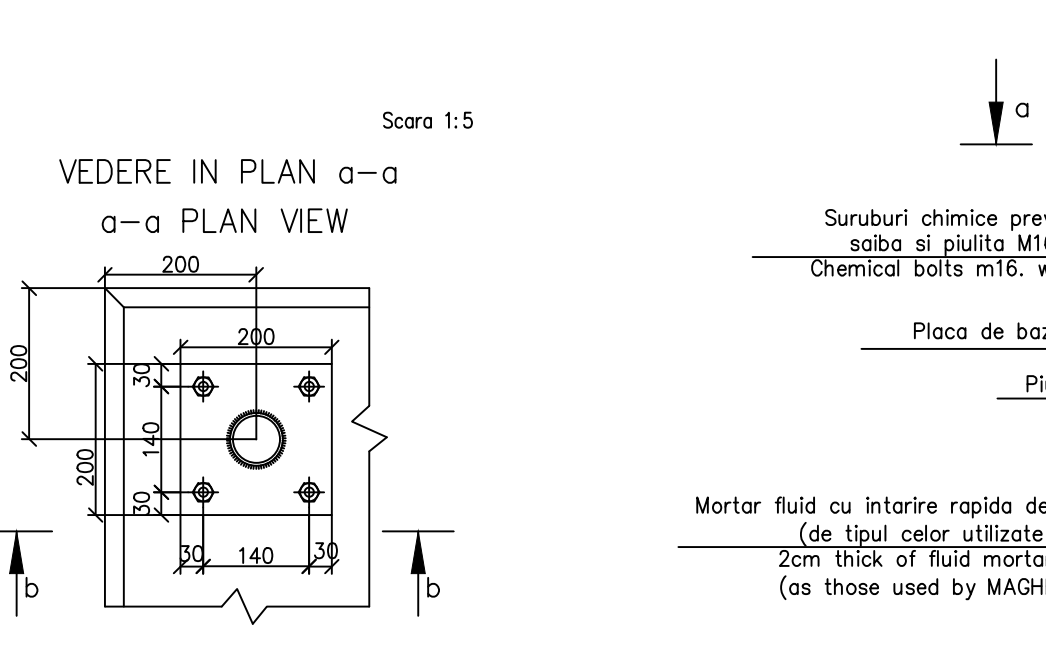


**MATERIAL METALIC PENTRU CONFECTIONAREA PARAPETULUI PODETULUI
 THE METALLIC MATERIAL TO BUILD PARAPET OF CULVERT**

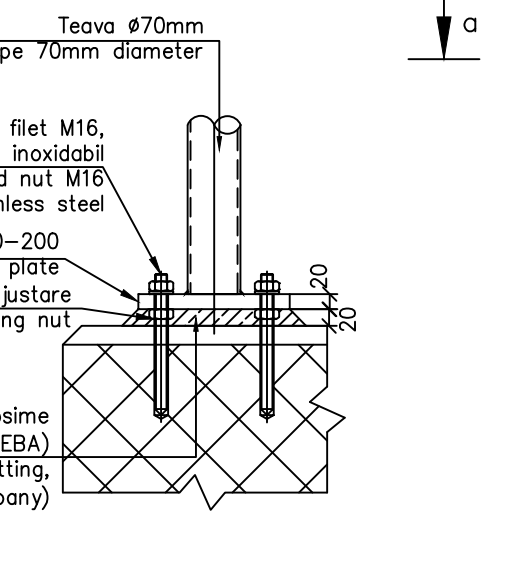
Poz. / Piece	Denumirea materialului / The denomination of the material	Buc.	Sectiune / Section	Lung. / Long.	Sectiune/Section		
					kg/ml	kg/buc	kg
P1	Placuta prindere / Clamping plate	4	200x20	200	31.40	6.28	25.12
P2	Stalp parapet EN 10297 - E275 / Parapet pole	4	70x4	970	6.51	6.32	25.26
P3	Mana curenta EN 10297 - E275 / Handrail	2	70x4	2900	6.51	18.88	37.76
P4	Umplutura EN 10058 / Filling	2	38x3,5	1980	2.98	5.90	11.80
P5	Lisa EN 10058 / Ledge	2	38x3,5	1980	2.98	5.90	11.80
Total partial / Partially total							111.74
Sudura 2% / Welding 2%							2.24
TOTAL kg							115

Se interzice copierea, difuzarea, imprumutarea sau utilizarea in alte scopuri, fara permisiunea AREX LIDER COMPANY ca proprietar al desenului.
 This drawing is forbidden to be copied, lent or used in other purposes than those previously approved by AREX LIDER COMPANY as its owner.

**DETALIU PENTRU PRINDEREA PLACUTELOR P1 DE TIMPAN
 DETAIL TO JOIN THE SLABS P1 AT THE TYMPANUM**



**SECTIUNE b-b
 b-b SECTION**



NOTA:
 1. Prezentul plan s-a intocmit pe baza urmatoarelor date:
 -plan de situatie
 -profil in lung
 -profil transversal
 -fisa podului
 -calcul hidraulic
 -date culesse pe teren
 2. Podetul corespunde la convoaiele de calcul UIC (LM71 si SW/2)
 3. La executie se vor respecta cu strictete prevederile din "Normativ pentru producerea betonului si executarea lucrarilor din beton, beton armat si beton precomprimat. Partea 2: Executarea lucrarilor din beton", indicativ NE 012/2-2010, iar verificarea calitatii lucrarilor si receptionarea lor se va face conform normativului C56-1985.
 4. Constructia se incadreaza in categoria de importanta B (constructii de importanta deosebita), modelul 1 de asigurare a calitatii si clasa de importanta B, conform HG 766/1997.
 5. Proiectul va fi verificat la exigentele A4.2; B2.2; D2.2.

NOTA:
 1. This plan has been drawn up based on the following data:
 -Lay-out Plan
 -Longitudinal Profile
 -Cross-section Profile
 -Bridge's File
 -Hydraulic determination
 -Field Data
 2. The culvert corresponds to the UIC determination convoys (LM71 and SW/2)
 3. The execution will strictly comply with the provisions of "Practice code for the concrete production and works execution, reinforced and pre-stressed concrete - Part 1: Practice code for concrete production" NE 012/1-2007 and "Practice code for the concrete production and works execution, reinforced and pre-stressed concrete - Part 2: The execution of concrete works." NE 012/2-2010, and the quality and the reception of the works shall be made accordingly to Norm C 56-1985.
 4. The construction has been classified in B category of importance (high important constructions), model 1-ensuring the quality and class of importance B according to G.O. 766/97.
 5. The project will be checked in order to comply with the A4.2; B2.2; D2.2 requirements.

D					
C					
B					
A	12.2011	Revizia 1	Elena Radu		
Indice / Index	Data / Date	Modificare / Modification/Revision	Proiectant / Designer	Aprobat / Approved	Aprobat CFR / Approved CFR



CLIENT / CLIENT
 ITALFERR GRUPPO FERROVIE DELLO STATO Joint Venture leader
 Scott Wilson
 OBERMEYER PLANEN + BERATEN GmbH
 TECNIC Consulting Engineers

CONSULTANT / CONSULTANT

		Date	Semnatura / Signature
Aprobat / Approved	Șef proiect / Project manager	R. Liuzza	
Aprobat / Approved	Coordonator Sectiune 1 / Section 1 Coordinator	C. Gambelli	
Verificat / Checked	Expert Cheie / Checking Expert	V.Kalidromitis	

SUBCONTRACTANT / SUBCONTRACTOR

		Date	Semnatura / Signature
Aprobat / Approved	Responsabil Subcontractant / Subcontractant Responsible	A. Dinulescu Stanciu	08.2011
Intocmit / Elaborated	Proiectant / Designer	Elena Radu	08.2011

Reabilitarea liniei de cale ferata Braşov - Simeria, parte componentă a coridorului IV Pan European, pentru circulația trenurilor cu viteza maximă de 160 km/h,
Tronsonul : Braşov - Sighişoara
 Rehabilitation of the railway line Braşov - Simeria, component Part of the IV Pan-European Corridor, for the trains circulation with maximum speed of 160 km/h,
Section : Braşov - Sighişoara

Denumire desen / Drawing Title :
STATIA / STATION: VANATORI
PODET - KM 271+233,472 / KM 271+233,472 - CULVERT
DISPOZITIE GENERALA / GENERAL LAYOUT

Codificare / Codification System	Scara / Scale 1:100; 1:5	LOT / LOT	Nr. / No 01 / 01
E A 5 1	0 1	C	1 8
P A	P O	0 8	6
1	0 0 2	1	