

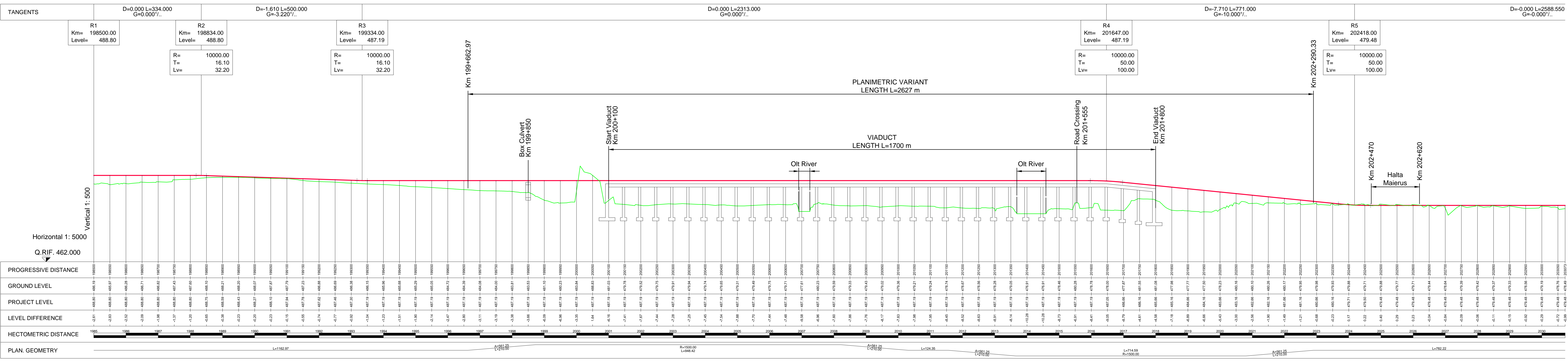
LEGEND

- LE : Length Existing Line
- Lv : Length Variant
- D : Difference Lv and Le
- VN : New Vertex
- Lc : New Circular Length
- Lt : New Transition Length
- Vu : New Max Speed
- d : Distance Existing and New Lines
- ST : Straight - Transition
- Rn : New Radius
- TC : Transition - Curve
- CT : Curve - Transition
- TS : Transition - Straight

VARIANT MAIERUS
Km 199+662.97 to 202+290.33

Le = 2776 m
Lv = 2627 m
Dl = -149 m

VN.1		VN.2	
Rn = 1500 m	Lc = 948 m	Rn = 1500 m	Lc = 715 m
Lt = 210 m	Cant = 130 mm	Lt = 210 m	Cant = 130 mm
Vm = 160 km/h	d1 = 124 m sx	Vm = 160 km/h	d2 = 257 m sx



TANGENTS

R1 Km= 198500.00 Level= 488.80	R2 Km= 198834.00 Level= 488.80	R3 Km= 199334.00 Level= 487.19	R4 Km= 201647.00 Level= 487.19	R5 Km= 202418.00 Level= 479.48
	R= 10000.00 T= 16.10 Lv= 32.20	R= 10000.00 T= 16.10 Lv= 32.20	R= 10000.00 T= 50.00 Lv= 100.00	R= 10000.00 T= 50.00 Lv= 100.00

PLANIMETRIC VARIANT LENGTH L=2627 m

VIADUCT LENGTH L=1700 m

PLAN AND PROFILE

CFR DESIGNER

ITALFERR **Wilson** **OBERMEYER** **TECMIC**

CONTRACT TITLE
Technical Assistance for the Preparation of Rail Projects for the Cohesion Fund ROMANIA
ISPA - 2004/RO16/PPA/003 - Publication Ref: EUROPEAID/121736/D/S/RO

European Union financed Project

MAIERUS VARIANT MAY 2016

LINE SECTION 1: BRASOV - SIGHISOARA

PLAN AND PROFILE SCALE 1:5000