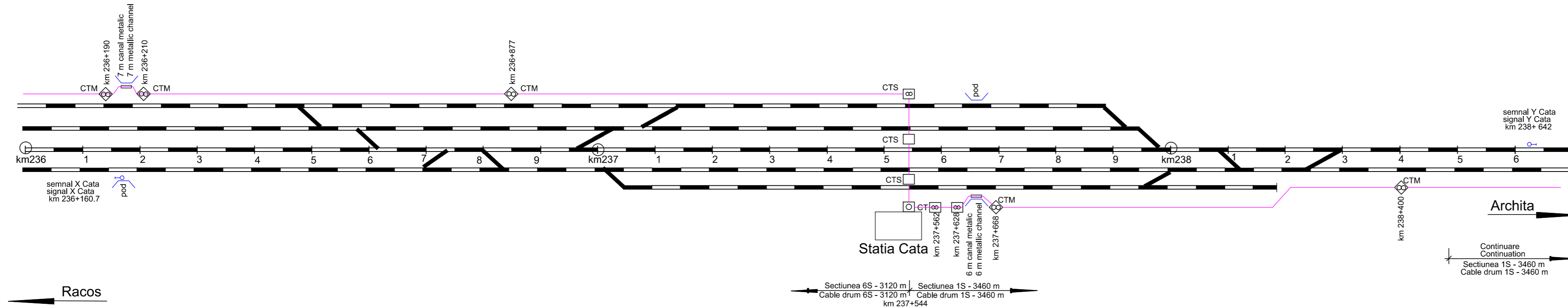


Continuare
Continuation
Sectiunea 6S - 3120 m
Cable drum 6S - 3120 m



Racos

Sectiunea 6S - 3120 m | Sectiunea 1S - 3460 m
Cable drum 6S - 3120 m | Cable drum 1S - 3460 m
km 237+544

**LEGENDA
LEGEND**

- CTM Camereta cu mufa de jonctiune
Handhole with junction box
- CTM Camereta cu rezerva
Handhole with cable reserve
- CT Camera de tragere cu mufa de jonctiune
Manhole with junction box
- CT Camera de tragere cu rezerva
Manhole with cable reserve
- CTS Camera de tragere speciala pentru subtraversare
Special mannhole for undercrossing
- Cablu cu fibre optice subteran
Underground optical fiber cable
- Teava PVC Φ 110 mm / canal metalic
PVC pipe Φ 110 mm / metallic channel

D					
C					
B					
A					
Indice Index	Data Date	Modificare Modification/Revision	Proiectant Designer	Aprobat Consultant Approved Consultant	Aprobat CFR Approved CFR

GUVERNUL ROMANIEI
ROMANIAN GOVERNMENT

PROIECT FINANȚAT DE UNIUNEA EUROPEANĂ
EUROPEAN UNION FINANCED PROJECT

C.N.C.F. "C.F.R." - S.A.
CLIENT / CLIENT

ITAFERR
 GRUPPO FERROVIE DELLO STATO
 Joint Venture leader

Scott Wilson

OBERMEYER
 PLANEN + BERATEN GmbH

TECNIC
 Consulting Engineers

CONSULTANT / CONSULTANT

Aprobat Approved	Șef proiect Project manager	R. Liuzza	Data Date	Semnătură Signature
Aprobat Approved	Coordonator Secțiune 1 Section 1 Coordinator	C. Gambelli		
Verificat Checked	Verificator Verifier	Pino Amodio		

SUBCONTRACTANT / SUBCONTRACTOR

Aprobat Approved	Responsabil Subconsultant Subconsultant Responsible	A. Stanciu - Dinulescu	Data Date	Semnătură Signature
Intocmit Elaborated	Proiectant Designer	Gabriela Trifan	12.2011	

Reabilitarea liniei de cale ferata Braşov - Simeria, parte componentă a coridorului IV Pan European, pentru circulația trenurilor cu viteză maximă de 160 km/h,
Tronsonul : Braşov - Sighişoara
 Rehabilitation of the railway line Braşov - Simeria, component Part of the IV Pan-European Corridor, for the trains circulation with maximum speed of 160 km/h,
Section : Braşov - Sighişoara

Proiect/Project
 2004/RO/16/P/PA/003
Faza / Phase:
 P.Th. / T.D.

Denumire desen / Drawing Title :
Statia - CATA - Station
CABLU CU FIBRE OPTICE (cablul 2)
SCHEMA DE INSTALARE A CABLULUI
FIBER OPTIC CABLE (cable 2)
INSTALLING SCHEME

Modificare / Codification System	Scara / Scale	LOT / LOT	Nr. / No 01/01
----------------------------------	---------------	-----------	-------------------

EA51 01 C 13 X5 SE 05 0 7 002 0