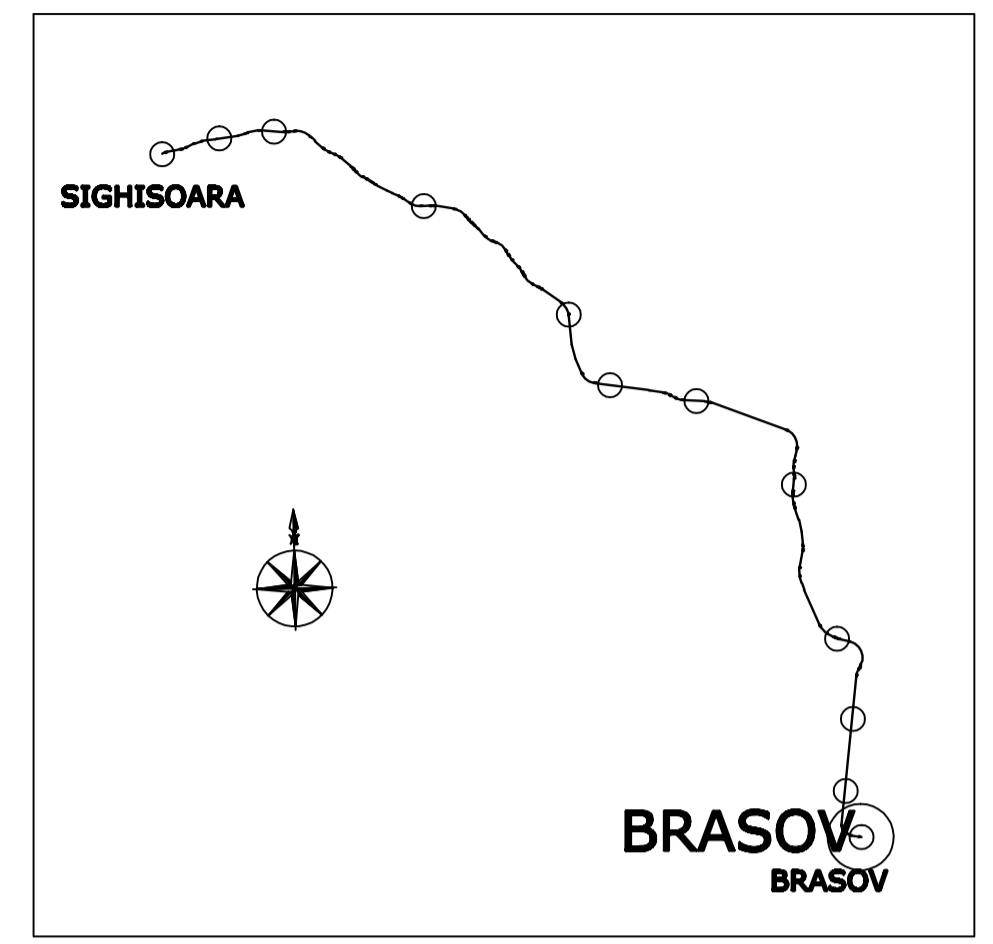
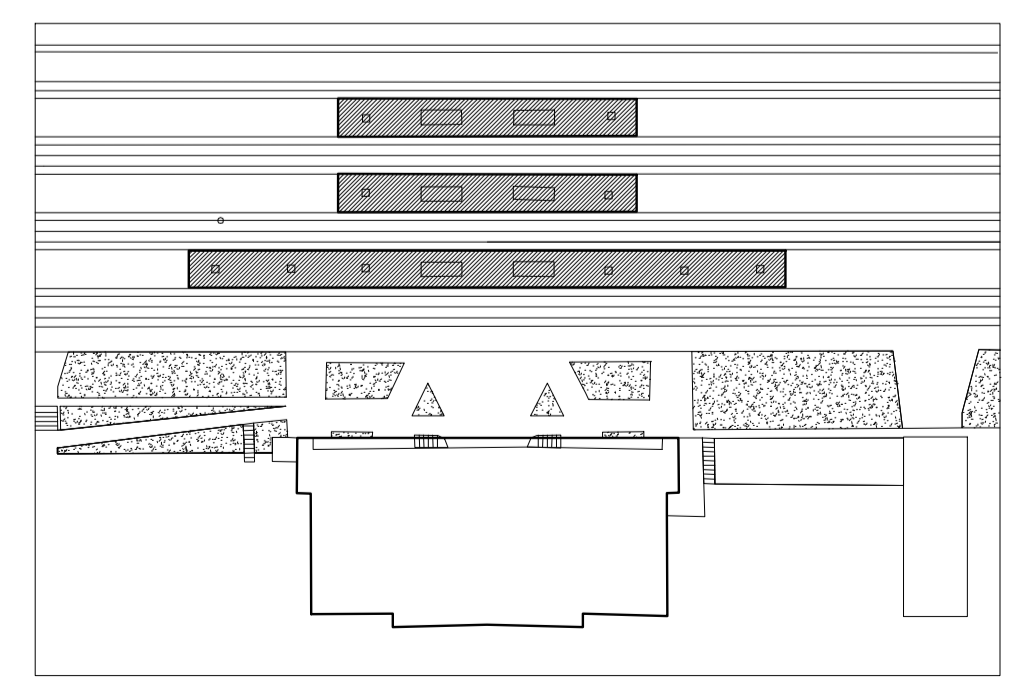


PLAN COPERTINE BRASOV 1/200 - BRASOV CANOPY TOP VIEW 1/200



D					
C					
B					
A					
Indice Index	Data Date	Modificari Modification/Revision	Proiectant Designer	Approbat Consultant Approved Consultant	Approbat CFR Approved CFR
		GUVERNUL ROMANIEI ROMANIAN GOVERNMENT		PROIECT FINANȚAT DE UNIUNEA EUROPEANĂ EUROPEAN UNION FINANCED PROJECT	
		C.N.C.F. "C.F.R." - S.A.		CLIENT / CLIENT	
		GRUPPO FERROVIE DELLO STATO Joint Venture leader			
		PLANEN + BERATEN GmbH		Consulting Engineers	
CONSULTANT / CONSULTANT					
Approbat Approved	Șef proiect Project manager	R. Liuzzi	12.2011		
Approbat Approved	Coordonator Secțiune 1 Section 1 Coordinator	C. Gambelli	12.2011		
Verificat Checked	Verificator Verifier	Giuseppe Fioravanti	12.2011		
SUBCONTRACTANT / SUBCONTRACTOR					
Approbat Approved	Responsabil Subcontractant Subcontractant Responsible	A. Stanclu - Dinulescu	12.2011		
Încadrat Elaborated	Proiectant Designer	Stefania Gheorghe	12.2011		
Reabilitarea liniei de cale ferată Brașov - Simeria, parte componentă a coridorului IV Pan European, pentru circulația trenurilor cu viteză maximă de 160 km/h, Tronsoanel : Brașov - Sighisoara Rehabilitation of the railway line Brașov - Simeria, component Part of the IV Pan-European Corridor, for the trains circulation with maximum speed of 160 km/h, Section : Brașov - Sighisoara					
Project/Project 2004/RO/18/PPA/003 Faza / Phase: P.Th. / T.D.					
Denumire desen / Drawing Title :					
Plan de învelitoare copertine - Stația Brașov Brașov Station - Roofing sheet canopy layout plan					
Codificare / Codification System		Scara / Scale	LOT / LOT	Nr. / No	
EA51 01 C 01 P9 CC 00 1 3 001 1		1:200		01 / 01	