

- Hidroizolare - 2 Membrane -
- Hidroizolare 2 waterproofing membranes
- Sapa mortar 3cm - Leveling blanket
- Folie polietilena - Polyethylene foil insulation
- Termoizolare polistiren extrudat 10cm -
- Polystyrene insulation 10cm
- Bariera contra vaporilor - Vapor barrier
- Strat de difuzie - Diffusion layer
- Strat nivelare si panta 1,5%, min.2cm -
- Slope concrete for terraces
- Amorsaj cu solutie bituminoasa - Bitumen priming
- Planseu B.A. - Concrete slab
- Plafon suspendat - False ceiling

- Hidroizolare - 2 Membrane -
- Hidroizolare 2 waterproofing membranes
- Sapa mortar 3cm - Leveling blanket
- Folie polietilena - Polyethylene foil insulation
- Termoizolare polistiren extrudat 25cm -
- Polystyrene insulation 25cm
- Bariera contra vaporilor - Vapor barrier
- Strat de difuzie - Diffusion layer
- Strat nivelare si panta 1,5%, min.2cm -
- Slope concrete for terraces
- Amorsaj cu solutie bituminoasa - Bitumen priming
- Planseu B.A. - Concrete slab
- Plafon suspendat - False ceiling

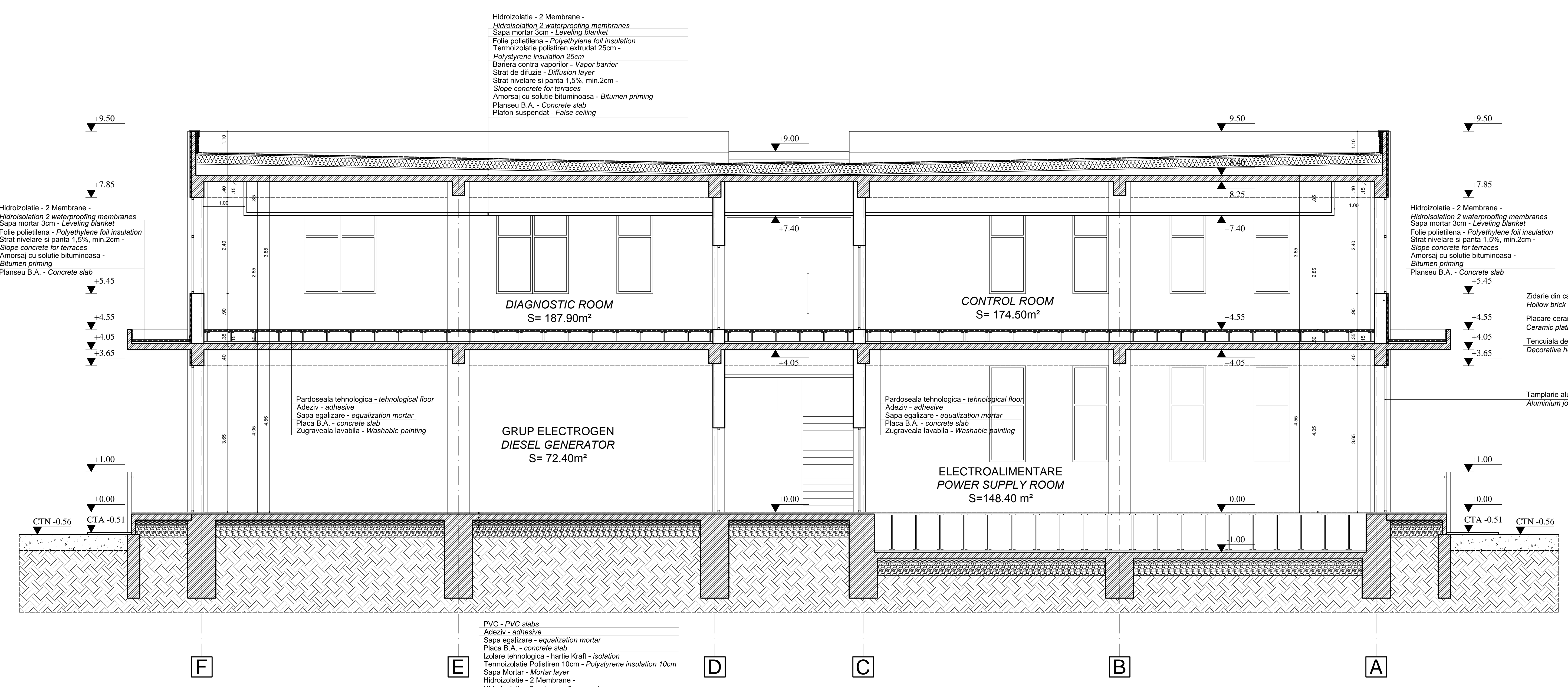
- Zidarie din caramida cu goluri
- Hollow brick masonry
- Placare ceramica - RAL 6021
- Ceramic plating - RAL 6021
- Tencuiala decorativa termoizolanta 10cm - RAL 1015
- Decorative heat-insulated plaster 10cm - RAL 1015
- Tamplarie aluminiu cu geam termoizolant - RAL 6021
- Aluminium joinery with thermopane glass - RAL 6021

- Pardoseala tehnologica - tehnological floor
- Adeziv - adhesive
- Sapa egalizare - equalization mortar
- Placa B.A. - concrete slab
- Plafon suspendat - False ceiling

- Parchet - parquet
- Adeziv - adhesive
- Sapa egalizare - equalization mortar
- Placa B.A. - concrete slab
- Izolare tehnologica - hartie Kraft - isolation
- Termoizolare polistiren 10cm - Polystyrene insulation 10cm
- Sapa Mortar - Mortar layer
- Hidroizolare - 2 Membrane -
- Hidroizolare 2 waterproofing membranes
- Sapa Mortar - Mortar layer
- Izolare tehnologica - hartie Kraft - isolation
- Strat Rupere Capilaritate Pietris ciuruit - Gravel layer
- Umplutura - Filling
- Teren Natural - Natural terrain

SECTIUNE A - A SC 1:50
A - A SECTION SC 1:50

Grad II de rezistenta la foc
Risc mic de incendiu
Categoria de importanta "C"



- Hidroizolare - 2 Membrane -
- Hidroizolare 2 waterproofing membranes
- Sapa mortar 3cm - Leveling blanket
- Folie polietilena - Polyethylene foil insulation
- Strat nivelare si panta 1,5%, min.2cm -
- Slope concrete for terraces
- Amorsaj cu solutie bituminoasa -
- Bitumen priming
- Planseu B.A. - Concrete slab

- Hidroizolare - 2 Membrane -
- Hidroizolare 2 waterproofing membranes
- Sapa mortar 3cm - Leveling blanket
- Folie polietilena - Polyethylene foil insulation
- Termoizolare polistiren extrudat 25cm -
- Polystyrene insulation 25cm
- Bariera contra vaporilor - Vapor barrier
- Strat de difuzie - Diffusion layer
- Strat nivelare si panta 1,5%, min.2cm -
- Slope concrete for terraces
- Amorsaj cu solutie bituminoasa - Bitumen priming
- Planseu B.A. - Concrete slab
- Plafon suspendat - False ceiling

- Hidroizolare - 2 Membrane -
- Hidroizolare 2 waterproofing membranes
- Sapa mortar 3cm - Leveling blanket
- Folie polietilena - Polyethylene foil insulation
- Strat nivelare si panta 1,5%, min.2cm -
- Slope concrete for terraces
- Amorsaj cu solutie bituminoasa -
- Bitumen priming
- Planseu B.A. - Concrete slab

- Pardoseala tehnologica - tehnological floor
- Adeziv - adhesive
- Sapa egalizare - equalization mortar
- Placa B.A. - concrete slab
- Zugraveala lavabila - Washable painting

- Pardoseala tehnologica - tehnological floor
- Adeziv - adhesive
- Sapa egalizare - equalization mortar
- Placa B.A. - concrete slab
- Zugraveala lavabila - Washable painting

- Zidarie din caramida cu goluri
- Hollow brick masonry
- Placare ceramica - RAL 6021
- Ceramic plating - RAL 6021
- Tencuiala decorativa termoizolanta
- Decorative heat-insulated plaster 10

- Tamplarie aluminiu cu geam termoizolant
- Aluminium joinery with thermopane

- PVC - PVC slabs
- Adeziv - adhesive
- Sapa egalizare - equalization mortar
- Placa B.A. - concrete slab
- Izolare tehnologica - hartie Kraft - isolation
- Termoizolare polistiren 10cm - Polystyrene insulation 10cm
- Sapa Mortar - Mortar layer
- Hidroizolare - 2 Membrane -
- Hidroizolare 2 waterproofing membranes
- Sapa Mortar - Mortar layer
- Izolare tehnologica - hartie Kraft - isolation
- Strat Rupere Capilaritate Pietris ciuruit - Gravel layer
- Umplutura - Filling
- Teren Natural - Natural terrain

SECTIUNE B - B SC 1:50
B - B SECTION SC 1:50

D					
C					
B					
A					

Index	Date	Modificari / Revision	Proiectant / Designer	Approbat / Approved	Consultant / Consultant	Approbat CFR / Approved CFR

GUVERNUL ROMANIEI / ROMANIAN GOVERNMENT

PROIECT FINANȚAT DE UNIUNEA EUROPEANĂ / EUROPEAN UNION FINANCED PROJECT

CLIENT / CLIENT

C.N.C.F. "C.F.R." - S.A.

ITALFER / Scot Wilson / OBERMEYER PLANEN + BERATEN GmbH / TECNIC Consulting Engineers

CONSULTANT / CONSULTANT		Data / Date	Semnatura / Signature
Approbat / Approved	Set proiect / Project manager	R. Luizza	12.2011
Approbat / Approved	Coordonator Sectiune 1 / Section 1 Coordinator	C. Gambelli	12.2011
Verificat / Checked	Verifier	Giuseppe Fioravanti	12.2011

SUBCONTRACTANT / SUBCONTRACTOR		Data / Date	Semnatura / Signature
Approbat / Approved	Responsabil Subcontractant / Subcontractant Responsible	A. Stanciu - Dinulescu	12.2011
Elaborat / Elaborated	Proiectant / Designer	Stefania Gheorghe	12.2011

Reabilitarea liniei de cale ferata Brasov - Simeria, parte componenta a coridorului IV Pan European, pentru circulatia trenurilor cu viteza maxima de 160 km/h, Tronsoanel : Brasov - Sighisoara

Rehabilitation of the railway line Brasov - Simeria, component Part of the IV Pan-European Corridor, for the trains circulation with maximum speed of 160 km/h, Section : Brasov - Sighisoara

Proiect/Project 2024/RO/16/P/PA003

Faza / Phase: P.Th. / T.D.

Denumire desen / Drawing Title :

STATIJA BRASOV CENTRU OPERATIONAL DE COMANDA - SECTIUNE A-A, SECTIUNE B-B

BRASOV RAILWAY STATION OPERATIONAL COMMAND CENTER SECTION A-A; B-B

Codificare / Codification System	Scala / Scale	1:50	LOT / LOT	Nr. / No	01 / 01
----------------------------------	---------------	------	-----------	----------	---------

E A S 1 0 1 C 0 1 P B C C 0 0 1 9 0 0 3 2

841 x 1039 = 0.88MP