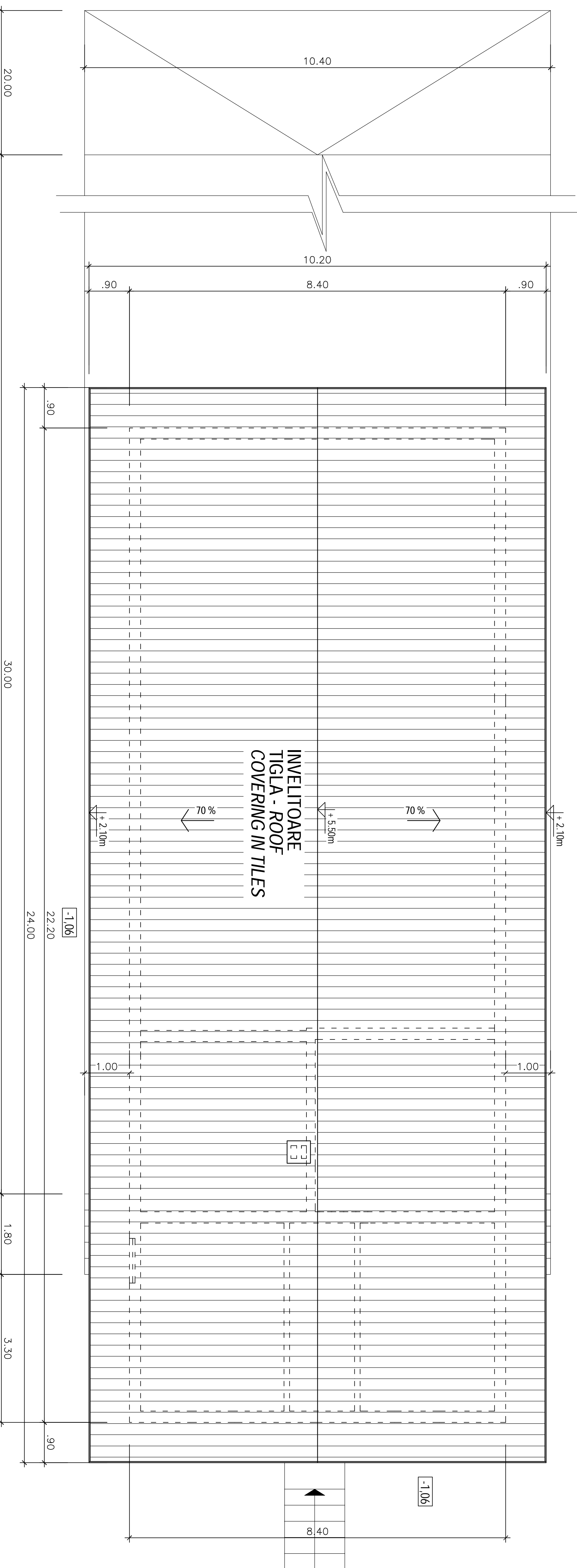
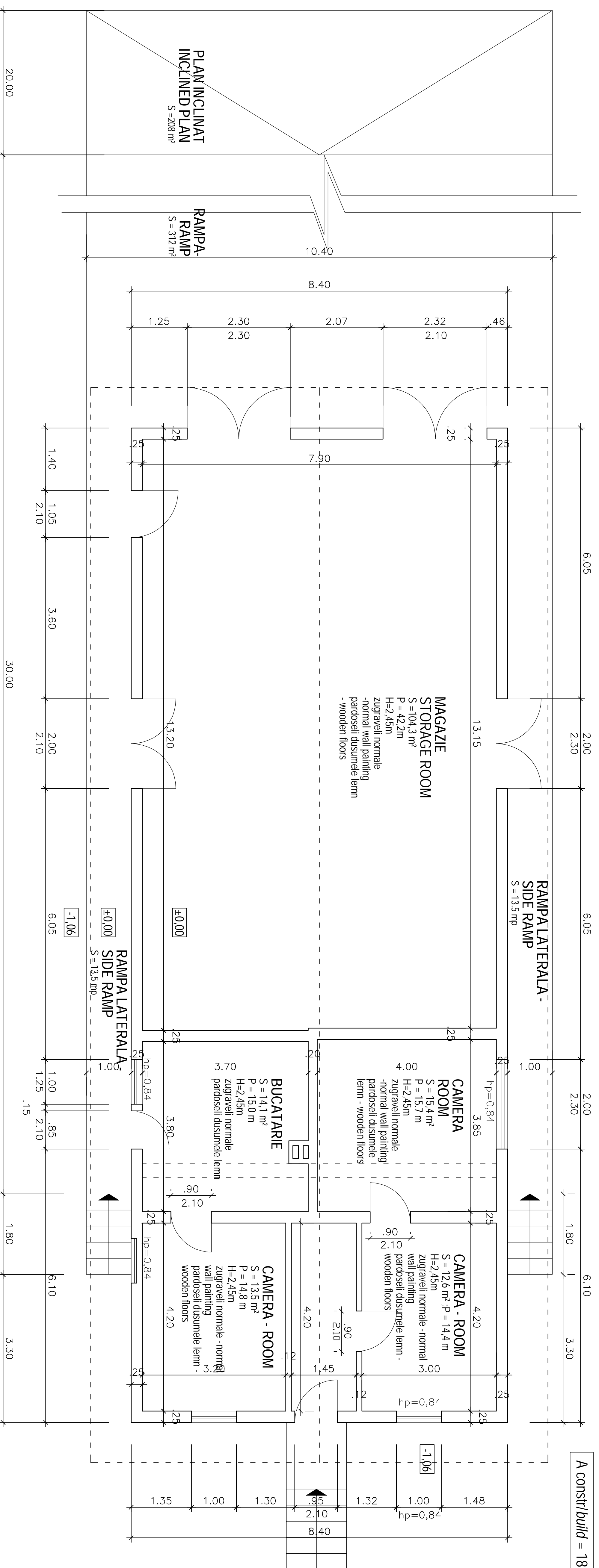


PLAN INVELITOARE - ROOF COVERING PLAN



PLAN PARTER SI PLAN SUBSOL - GROUND FLOOR AND BASEMENT PLAN



A constr/build = 185m²

Index	Date	Modificari/Revizii	Proiectant	Approbat Continator	Approbat CRS
D					
C					
B					
A					

GUVERNUL ROMANIEI
ROMANIAN GOVERNMENT

PROIECT FINANAT DE UNIUNEA EUROPEANA
EUROPEAN UNION FINANCED PROJECT



CLIENT / CLIENT
C.N.C.F. "C.F.R." - S.A.

CONSULTANT / CONSULTANT
TECNIC
Consulting Engineers

Approved	Project manager	Date	Signature
Approved	R. Lutzza	12. 2011	
Approved	C. Gambelli	12. 2011	
Checked	Giuseppe Foravanti	12. 2011	

SUBCONTRACTANT / SUBCONTRACTOR
ALTA

Reabilitarea liniei de cale ferata Brasov - Sibiu, parte componenta a a condonului IV Pan European, pentru circulatia trenurilor cu viteza maxima de 160 km/h.
Trenosonul : Brasov - Sibiu
Reabilitarea liniei de cale ferata Brasov - Sibiu, parte componenta a a condonului IV Pan European, pentru circulatia trenurilor cu viteza maxima de 160 km/h.
Trenosonul : Brasov - Sibiu
Section : Brasov - Sibiu

Denumire desen / Drawing Title :
STATA BOD DEMOLARE MAGAZIE PLAN, PLAN INVELITOARE
RAILWAY STATION BOD PLAN FOR STORING HOUSE DISMANTLING,
ROOFING PLAN

Codificare / Codification System	Scara / Scale	LOT / LOT	Nr. / No
E A B 1	0 1 E	0 5 A B	0 2 0 0 0 3 0