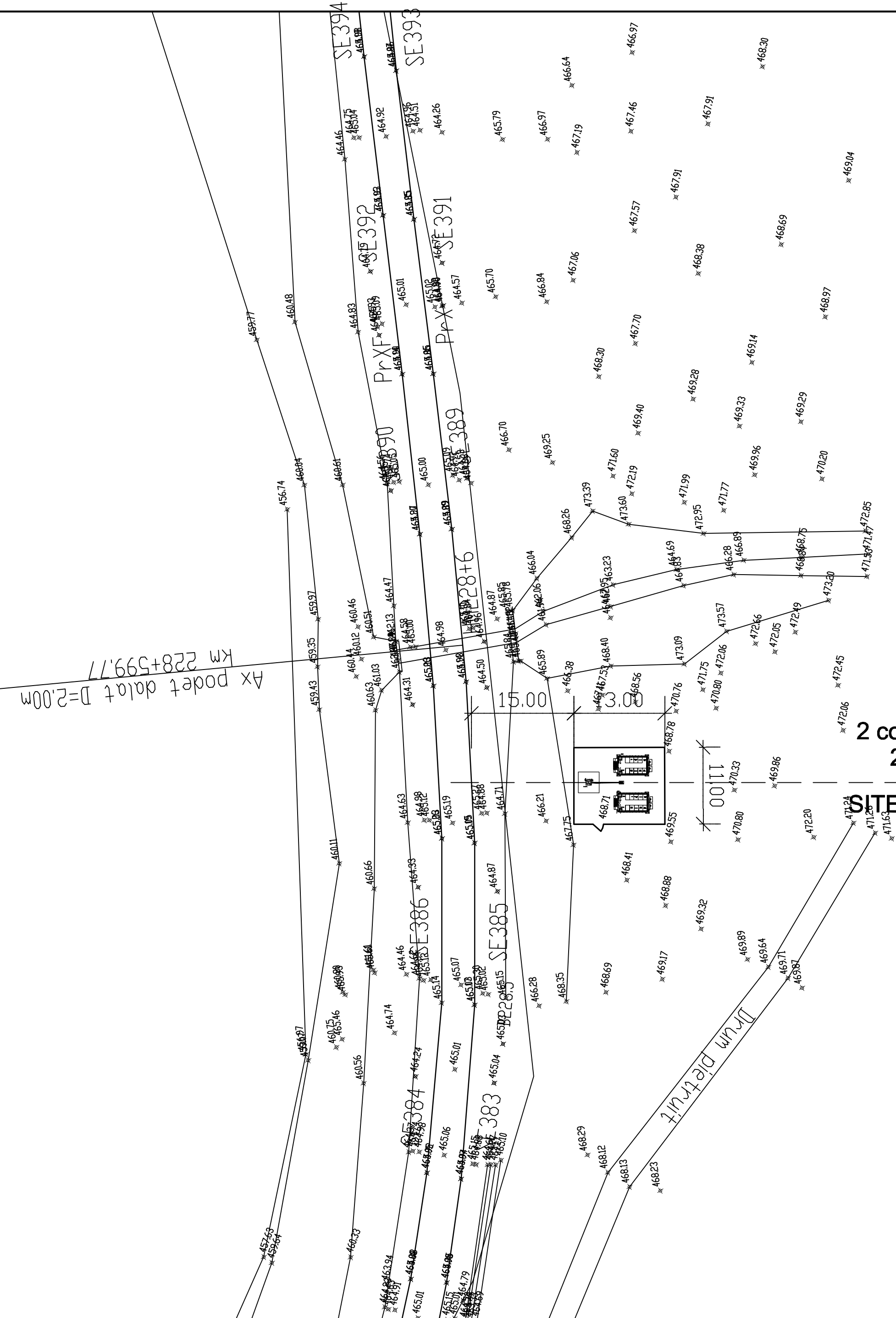


2 containere GSMR + antena 30m inaltime  
 2 GSMR shelter + must 30m height  
**SITE 10bis:Racos - Augustin km 228+580**




D					
C					
B					
A					
Indice	Data	Modificare	Proiectant	Approbat	Approbat
	Date	Modification/revision	Designer	Consultant	CFR


**GUVERNUL ROMANIEI**  
 ROMANIAN GOVERNMENT



**PROIECT FINANȚAT DE UNIUNEA EUROPEANĂ**  
 EUROPEAN UNION FINANCED PROJECT



**C.N.C.F. "C.F.R." - S.A.**

**CLIENT / CLIENT**


**ITALFERRA**  
 GRUPPO FERROVIE DELLO STATO  
 Joint Venture leader


**SCOTT WILSON**


**OBERMEYER**  
 PLANEN + BERATEN GMBH


**TECNIC**  
 Consulting Engineers

**CONSULTANT / CONSULTANT**

Approbat	Set proiect	R. Liuzza	Data	12. 2011	Signature
Approbat	Coordonator Scantina 1	C. Gambelli	Data	12. 2011	Signature
Verificat	Section 1 Coordinator	Giuseppe Fioravanti	Data	12. 2011	Signature
Checked	Verifier				

**SUBCONTRACTANT / SUBCONTRACTOR**

Approbat	Responsabil Subcontractant	A.Stancu - Dinulescu	Data	12. 2011	Signature
Approbat	Subcontractant Responsible				
Elaborat	Proiectant	Andreea Stalcu	Data	12. 2011	Signature
Elaborated	Designer				

Reabilitarea liniei de cale ferata Brasov - Simeria, parte componentă a coridorului IV Pan European, pentru circulația trenurilor cu viteză maximă de 160 km/h,  
**Tronsoani : Brasov - Sighisoara**  
 Rehabilitation of the railway line Brasov - Simeria, component Part of the IV Pan-European Corridor, for the trains circulation with maximum speed of 160 km/h,  
**Section : Brasov - Sighisoara**

**Project/Project**  
 2004/RO/16/P/PA/003  
 Faza / Phase:  
 P.Th. / T.D.

Denumire desen / Drawing Title :  
**INTERVALUL RACOS - AUGUSTIN KM 228+580 - PLAN AMPLASAMENT**  
**CONTAINER SI ANTENA GSMR**  
**RACOS - AUGUSTIN INTERVAL KM 228+580 - GSMR SHELTER AND MUST LAYOUT PLAN**

Codificare / Codification System :  
 E A 5 1 0 1 C 1 0 L 8 C C 0 0 0 9 0 0 4 1

Scara / Scale : 1 : 500  
 LOT / LOT :  
 Nr. / No : 01 / 01