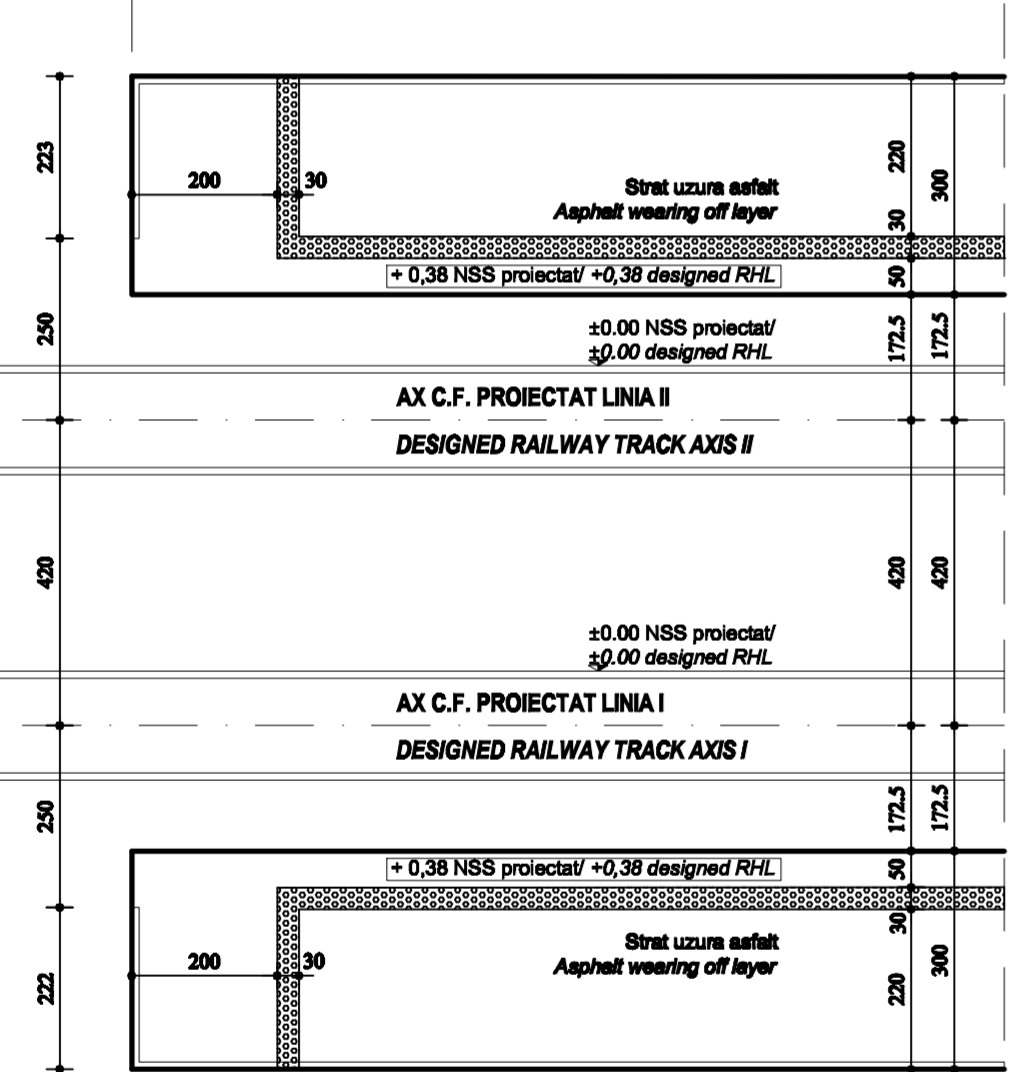


DETALIU 2 - PLAN sc 1:100/
DETAIL 2 - PLAN sc 1:100

DETALIU 1 - PLAN sc 1:100/
DETAIL 1 - PLAN sc 1:100

LEGENDA DETALIILOR
DETAILS LEGEND

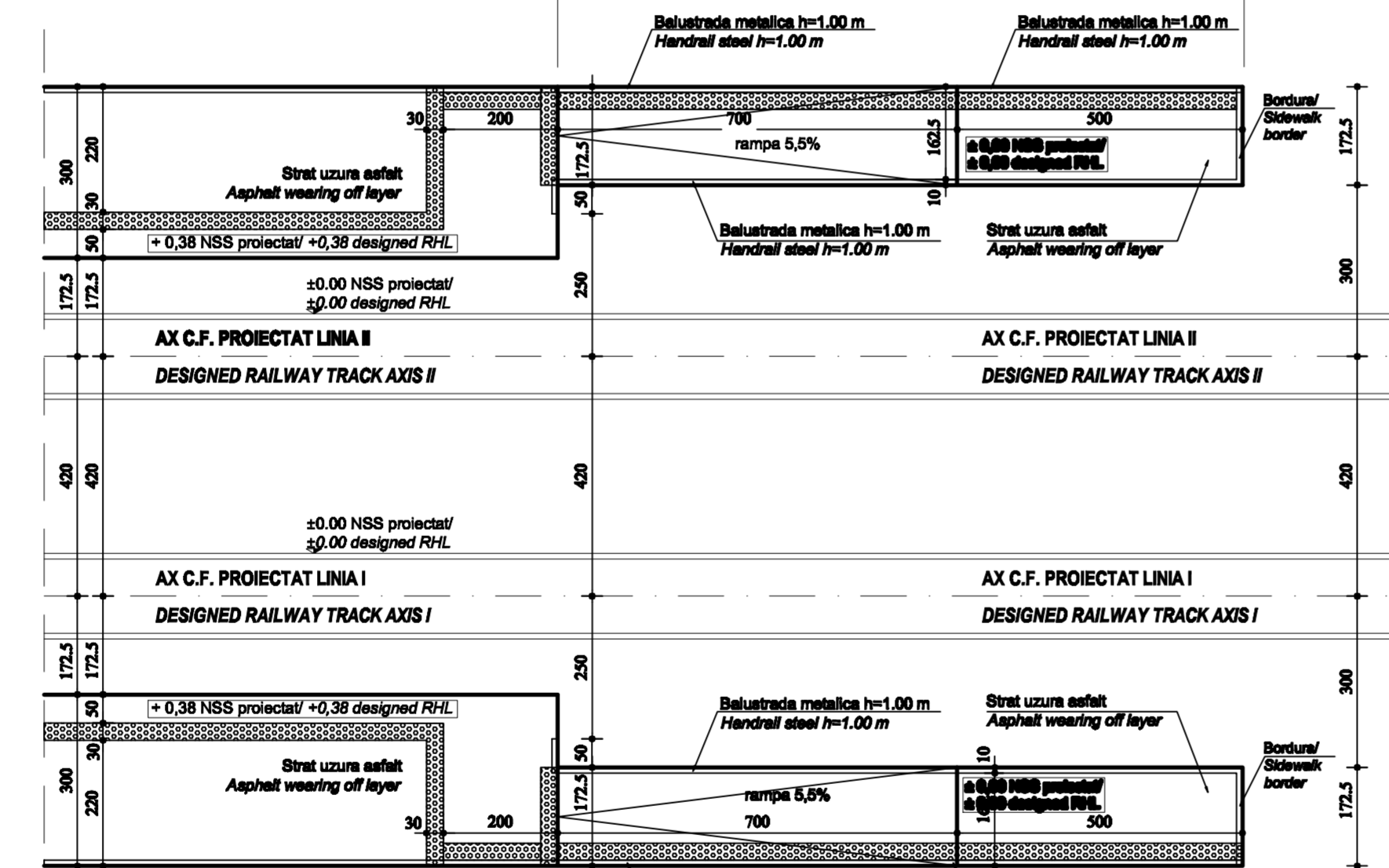
Capat peron
linia II
Km 211+540
Platform limit
track II
Km 211+540



Capat peron
linia I
Km 211+540
Platform limit
track I
Km 211+540

DETALIU 1 - PLAN sc 1:100/
DETAIL 1 - PLAN sc 1:100

Capat peron
linia II
Km 211+690
Platform limit
track II
Km 211+690



Capat peron
linia I
Km 211+690
Platform limit
track I
Km 211+690

DETALIU 2 - PLAN sc 1:100/
DETAIL 2 - PLAN sc 1:100

Capat trotuar
linia II
Km 211+702
Sidewalk limit
track II
Km 211+702

Capat trotuar
linia I
Km 211+702
Sidewalk limit
track I
Km 211+702

D													
C													
B													
A													
Indice	Data	Modificari	Proiectant	Aprobat Consultant	Aprobat CFR								
		Modificari/Revisiuni	Designer	Approved Consultant	Approved CFR								
		GUVERNUL ROMANIEI ROMANIAN GOVERNMENT		PROIECT FINANȚAT DE UNIUNEA EUROPEANĂ EUROPEAN UNION FINANCED PROJECT									
		C.N.C.F. "C.F.R." - S.A.											
		CLIENT / CLIENT											
		ITALFERR GRUPPO FERROVIE DELLO STATO Joint Venture leader		Scott Wilson									
		OBERMEYER PLANEN + BERATEN GmbH		TECNIC Consulting Engineers									
		CONSULTANT / CONSULTANT		<table border="1"> <tr> <th>Date</th> <th>Semnatura</th> </tr> <tr> <td>12.2011</td> <td></td> </tr> <tr> <td>12.2011</td> <td></td> </tr> <tr> <td>12.2011</td> <td></td> </tr> </table>		Date	Semnatura	12.2011		12.2011		12.2011	
Date	Semnatura												
12.2011													
12.2011													
12.2011													
Aprobat	Șef proiect	R. Liuzza	12.2011										
Approved	Project manager												
Aprobat	Coordonator Secțiune 1	C. Gambelli	12.2011										
Approved	Section 1 Coordinator												
Verificat	Verificator	Giuseppe Fioravanti	12.2011										
Checked	Verifier												
		SUBCONTRACTANT / SUBCONTRACTOR											
Aprobat	Responsabil Subcontractant	A. Stanciu - Dinulescu	12.2011										
Approved	Subcontractant Responsible												
Intocmit	Proiectant	Stefania Gheorghe	12.2011										
Elaborated	Designer												
		Reabilitarea liniei de cale ferată Brașov - Simeria, parte componentă a coridorului IV Pan European, pentru circulația trenurilor cu viteză maximă de 160 km/h, Tronsonul : Brașov - Sighișoara Rehabilitation of the railway line Brașov - Simeria, component Part of the IV Pan-European Corridor, for the trains circulation with maximum speed of 160 km/h, Section : Brașov - Sighișoara		Project/Project 2004/RO16/PPA003 Faza / Phase: D.E. / E.D.									
		Denumire desen / Drawing Title : Detaliul capete de peron - Halta Ormenis; Ormenis Ardeal Flag Station - Details for platforms extremities											
Codificare / Codification System		Scara / Scale	LOT / LOT	Nr. / No									
		1:100		01/01									
E	A	5	1	0	1								
E	1	0	1	E	1								
1	0	B	A	C	C								
0	0	0	0	1	2								
0	0	8	1										