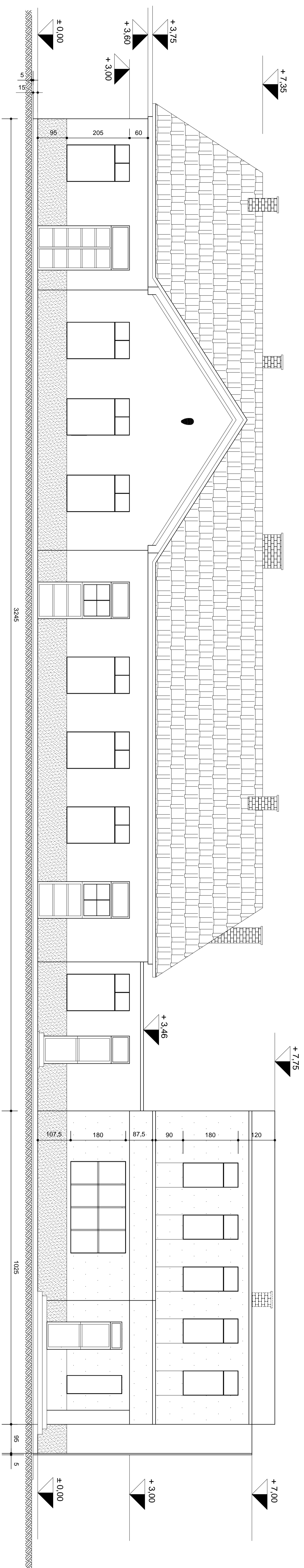
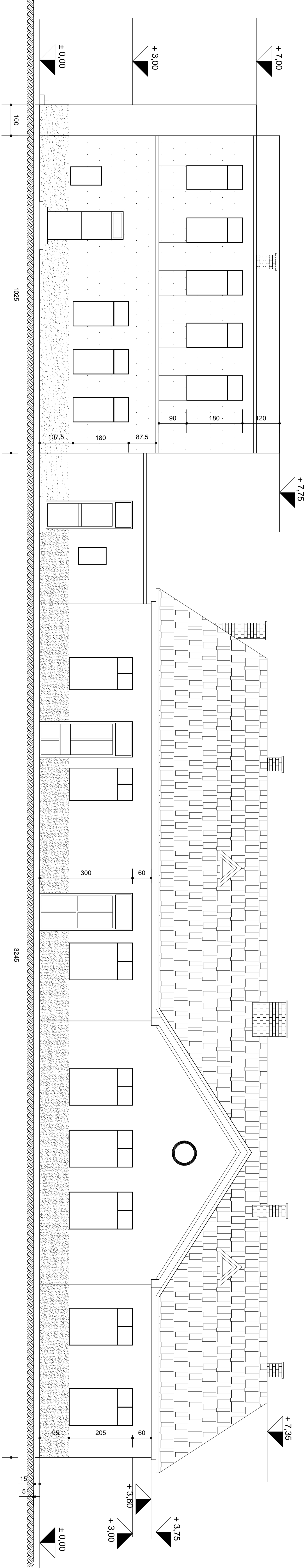


CLADIREA STATIONII FATADA LA LINII / RAILWAY STATION TRACKS FACADE - Sc. 1:50 -



CLADIREA STATIONII FATADA POSTERIOARA / RAILWAY STATION POSTERIOR FACADE - Sc. 1:50 -



D					
C					
B					
A					

Index	Date	Modifications	Projector	Approved	Approved
A					

CLIENT / CLIENT
GUVERNUL ROMANIEI
 ROMANIAN GOVERNMENT
PROIECT FINANȚAT DE UNIUNEA EUROPEANĂ
 EUROPEAN UNION FINANCED PROJECT

CONSULTANT / CONSULTANT
OBREMAYER
 CONSULTING ENGINEERS

SUBCONTRACTANT / SUBCONTRACTOR
AMT
 CONSULTING ENGINEERS

STATIONARY STATION FACADE DEMOLITION AND RECONSTRUCTION PROJECT
 REABILITAREA LINIEI DE CALĂ FERATĂ BRAȘOV - SIMONA, PARTEA COMPONENTĂ A CONDIȚIILOR
 IV PAN EUROPEAN, PENTRU CIRCULAȚIA TRAFICULUI CU VITEZĂ MAXIMĂ DE 160 KM/H.
 Rehabilitation of the railway line Brașov - Simona, part of the IV Pan European
 Condition for the traffic circulation with maximum speed of 160 km/h
 Section : Brașov - Sighișoara

CLIENT / CLIENT
C.N.C.F. "C.F.R." - S.A.

CONSULTANT / CONSULTANT
OBREMAYER
 CONSULTING ENGINEERS

SUBCONTRACTANT / SUBCONTRACTOR
AMT
 CONSULTING ENGINEERS