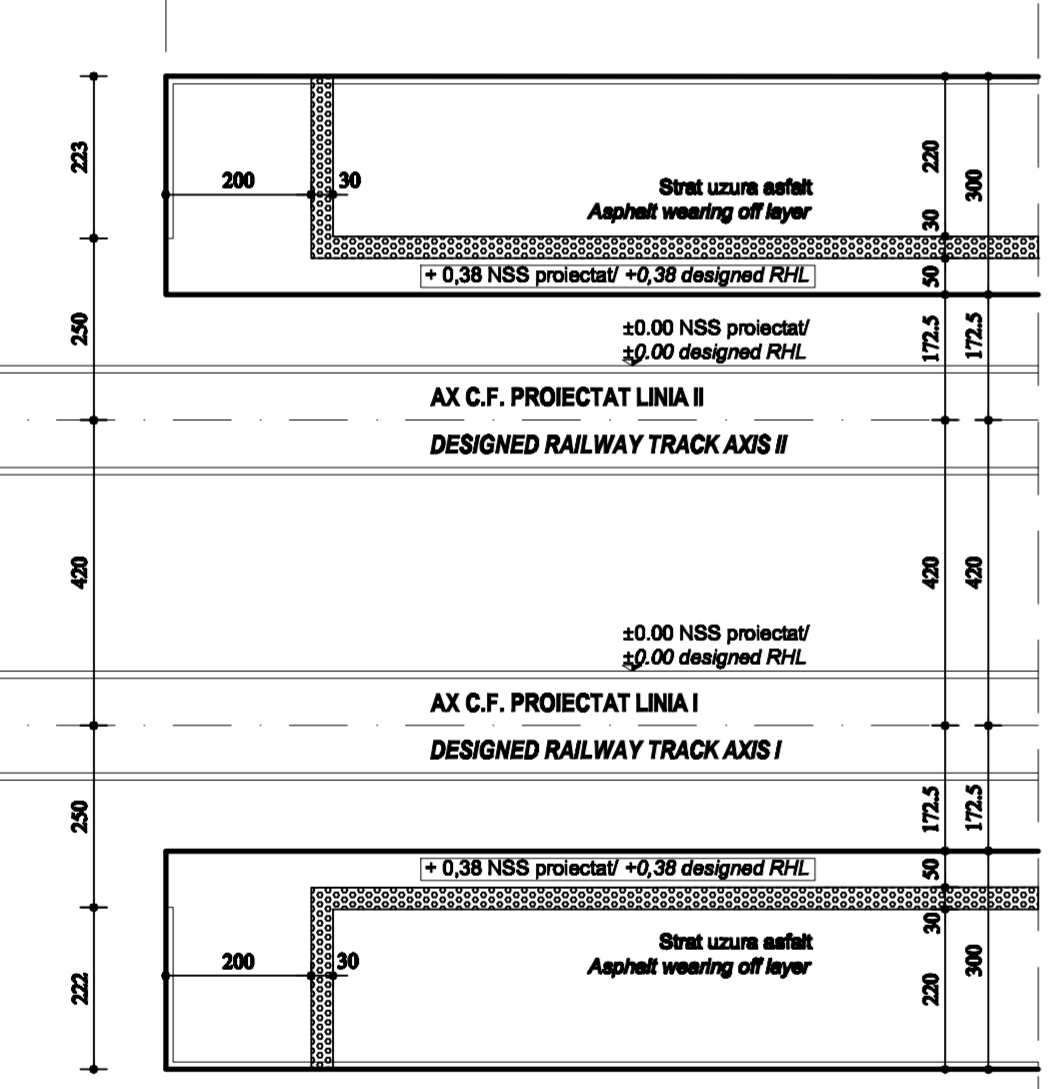
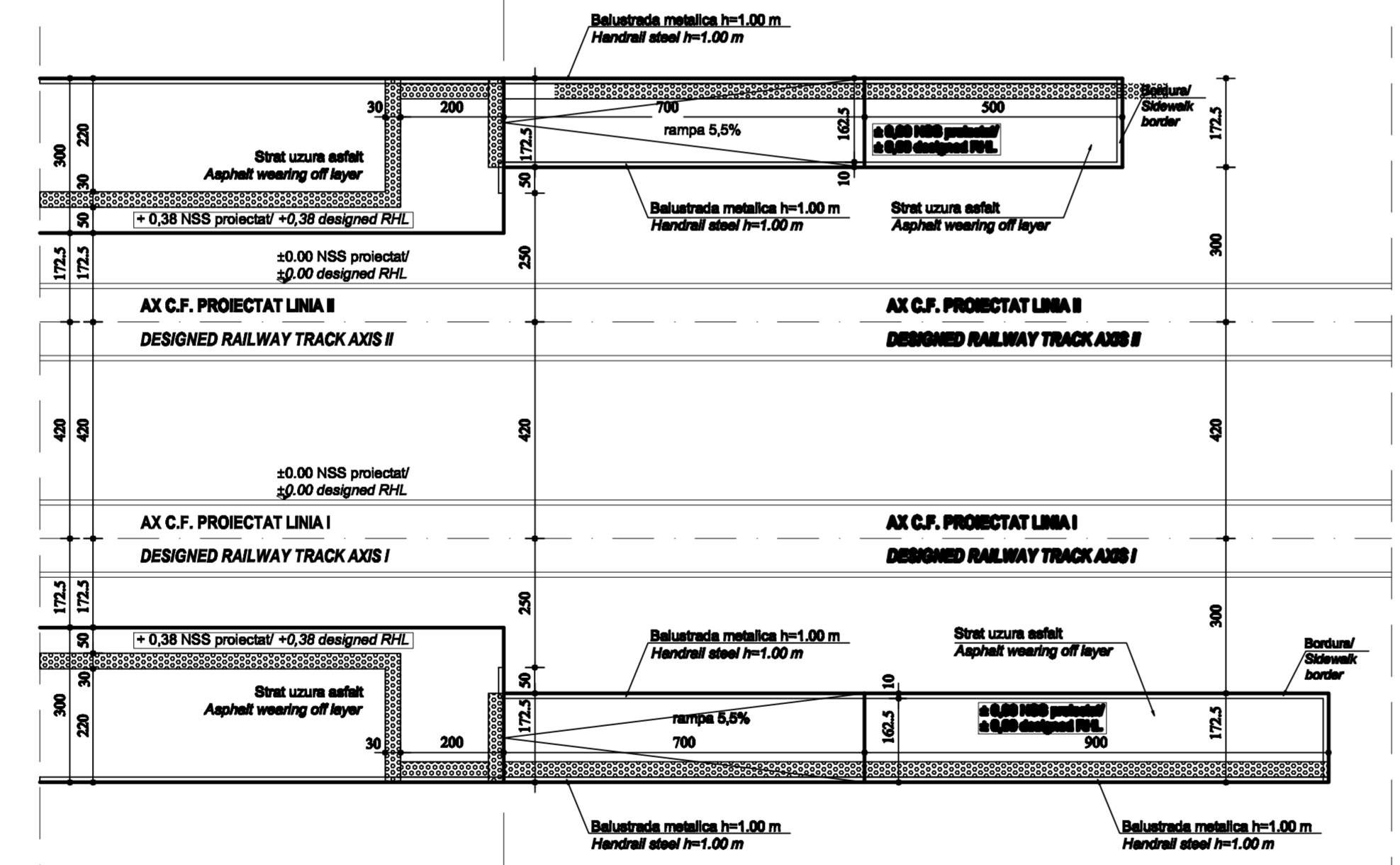


Capat peron
linia II
km 242+827
Platform limit
track II
km 242+827



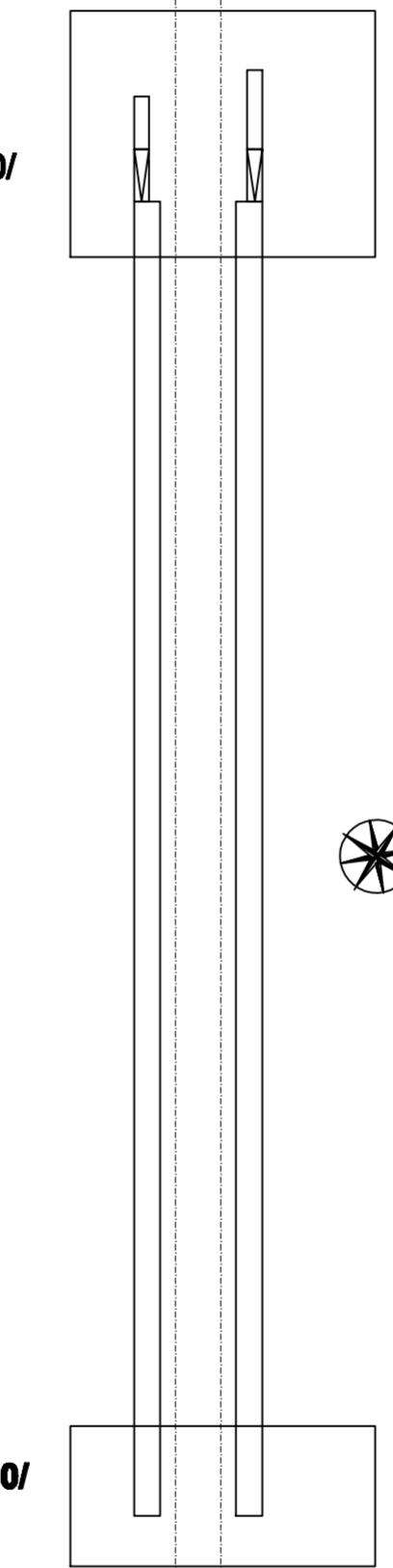
DETALIU 1 - PLAN sc 1:100/
DETAIL 1 - PLAN sc 1:100

Capat peron
linia II
km 242+977
Platform limit
track II
km 242+977



DETALIU 2 - PLAN sc 1:100/
DETAIL 2 - PLAN sc 1:100

DETALIU 2 - PLAN sc 1:100/
DETAIL 2 - PLAN sc 1:100



DETALIU 1 - PLAN sc 1:100/
DETAIL 1 - PLAN sc 1:100

LEGENDA DETALIUI/
DETAILS LEGEND

| D | | | | | |
|--|---|---|---------------------------------|---|--------------------------|
| C | | | | | |
| B | | | | | |
| A | | | | | |
| Indice Index | Data Date | Modificari Modification/Revision | Proiectant Designer | Aprobat Consultant Approved Consultant | Aprobat CFR Approved CFR |
| | | GUVERNUL ROMANIEI ROMANIAN GOVERNMENT | | PROIECT FINANȚAT DE UNIUNEA EUROPEANĂ EUROPEAN UNION FINANCED PROJECT | |
| CLIENT / CLIENT | | | C.N.C.F. "C.F.R." - S.A. | | |
| ITALFERR GRUPPO FERROVIE DELLO STATO Joint Venture leader | | Scott Wilson | | OBERMEYER PLANEN + BERATEN GmbH | |
| TECNIC Consulting Engineers | | | | | |
| CONSULTANT / CONSULTANT | | | | Data Date | Semnatura Signature |
| Aprobat Approved | Șef proiect Project manager | R. Liuzza | | 12.2011 | |
| Aprobat Approved | Coordonator Secțiune 1 Section 1 Coordinator | C. Gambelli | | 12.2011 | |
| Verificat Checked | Verificator Verifier | Giuseppe Fioravanti | | 12.2011 | |
| SUBCONTRACTANT / SUBCONTRACTOR | | | | Data Date | Semnatura Signature |
| Aprobat Approved | Responsabil Subcontractant Subcontractant Responsible | A.Stanciu - Dinulescu | | 12.2011 | |
| Intocmit Elaborated | Proiectant Designer | Stefania Gheorghe | | 12.2011 | |
| Reabilitarea liniei de cale ferata Braşov - Simeria, parte componentă a coridorului IV Pan European, pentru circulația trenurilor cu viteză maximă de 160 km/h, Tronsonul : Braşov - Sighişoara Rehabilitation of the railway line Braşov - Simeria, component Part of the IV Pan-European Corridor, for the trains circulation with maximum speed of 160 km/h, Section : Braşov - Sighişoara | | | | Project/Project 2004/RO16/PPA003 Faza / Phase: D.E. / E.D. | |
| Denumire desen / Drawing Title : | | | | | |
| Detalii capete de persoane - Halta Palos Ardeal; Palos Ardeal Flag Station - Details for platforms extremities | | | | | |
| Codificare / Codification System | | | Scara / Scale 1:100 | LOT / LOT | Nr. / No 01/01 |
| E | A | 5 | 1 | 0 | 1 |
| E | 1 | 4 | B | A | C |
| C | C | 0 | 0 | 1 | 2 |
| 0 | 0 | 8 | 1 | | |