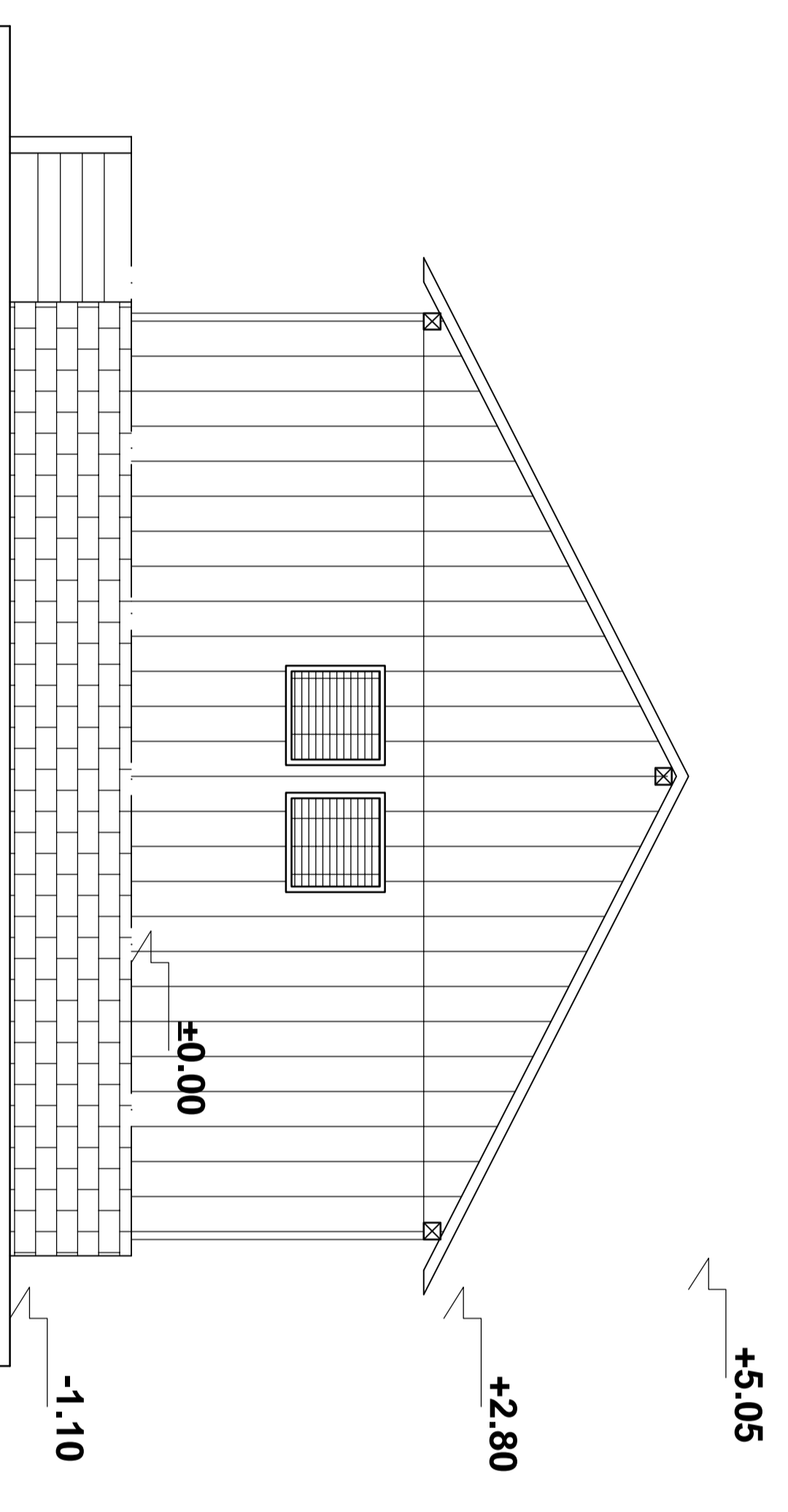
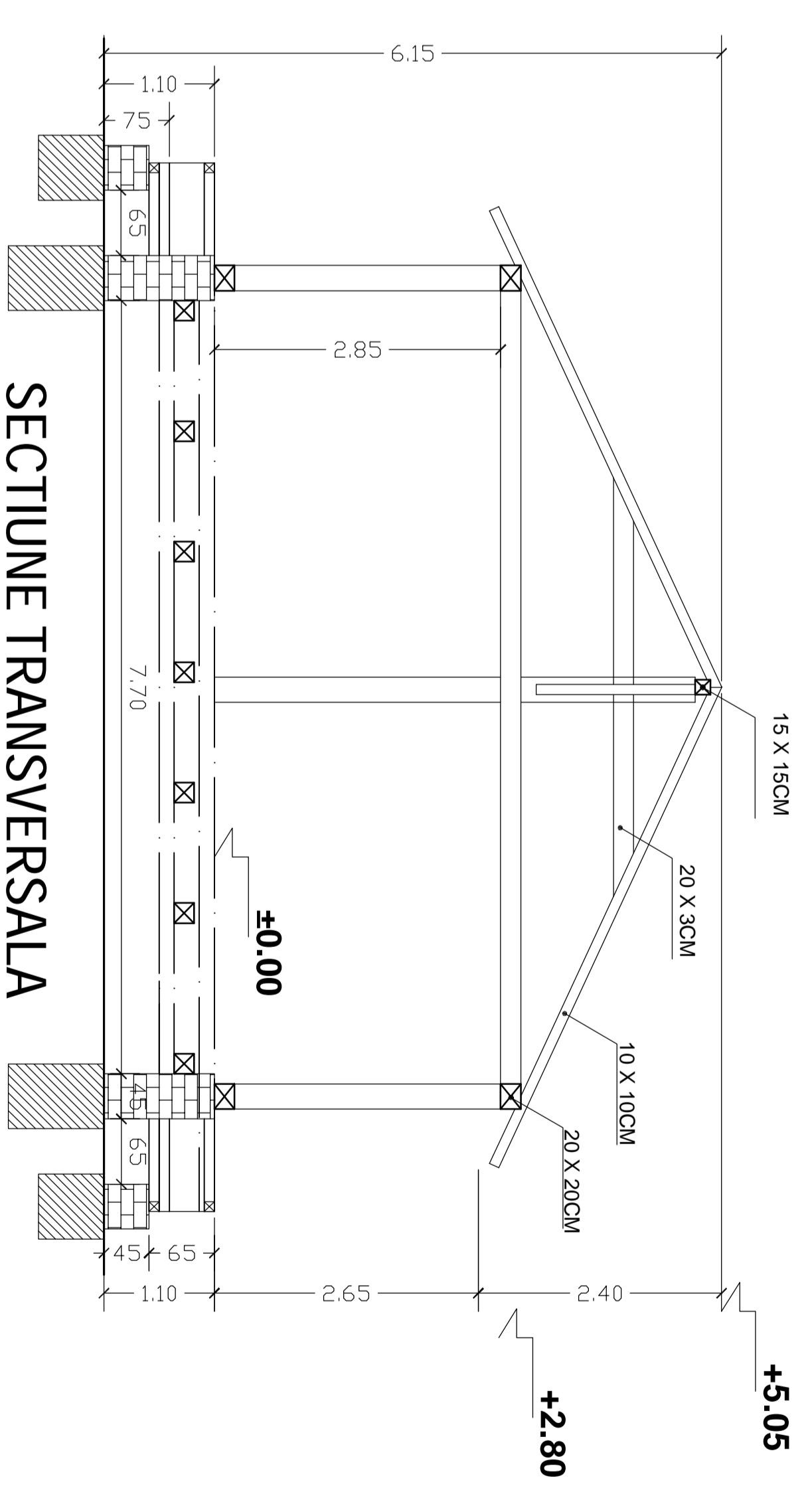


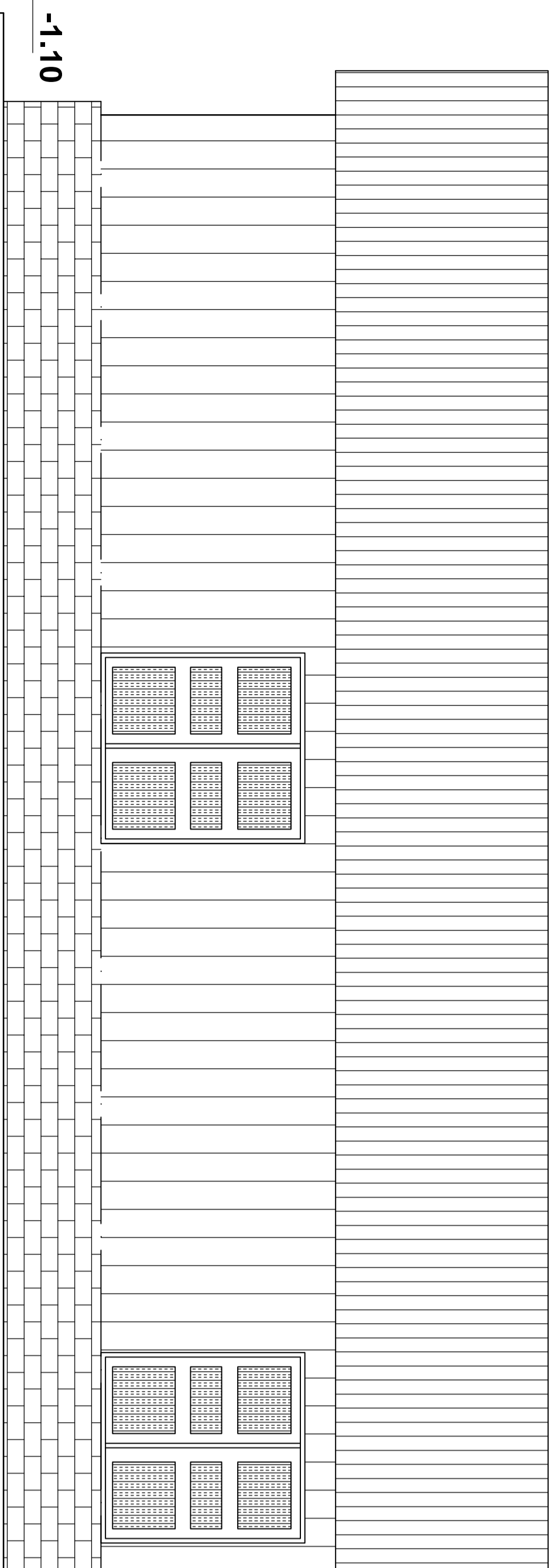
FATADA LATERAL DREAPTA  
RIGHT SIDE FACADE



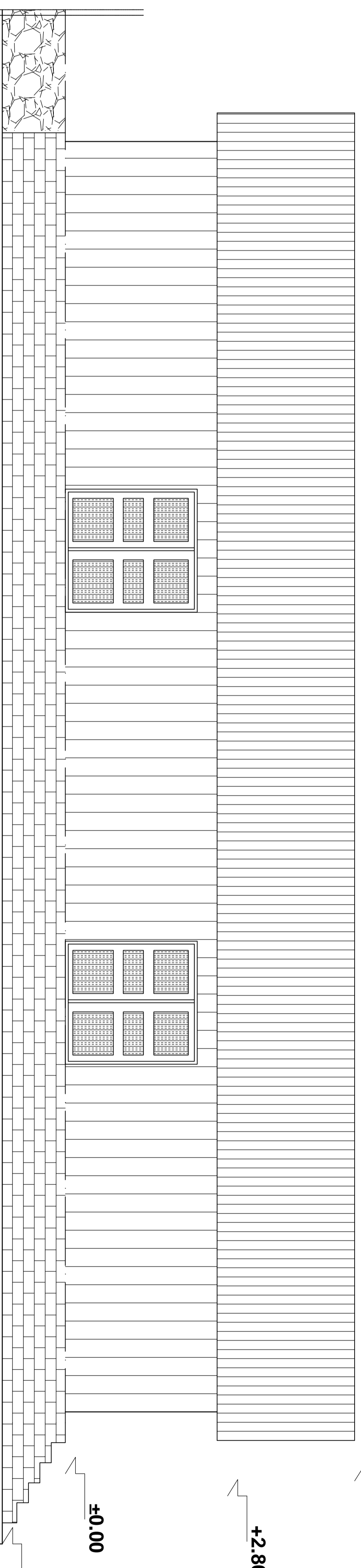
FATADA LATERAL STANGA  
LEFT SIDE FACADE



SECTIUNE TRANSVERSALA  
CROSS SECTION



FATADA LA LINII / TRACKS FACADE



FATADA POSTERIOARA / POSTERIOR FACADE

D					
C					
B					
A	Data	Modificare/Revision	Proiectant	Approbat/CRF	Approbat/CRF
Indice	Data	Modificare/Revision	Proiectant	Approbat/CRF	Approbat/CRF
Indice	Data	Modificare/Revision	Proiectant	Approbat/CRF	Approbat/CRF

ROMANIA GOVERNMENT PROJECT FINANȚAT DE UNIUNEA EUROPEANĂ A EUROPEAN UNION FINANCED PROJECT



CONSULTANT / CONSULTANT		SUBCONTRACTOR / SUBCONTRACTOR	
Approved	Spal proiectat	Approved	Responsabil Sitocant
Approved	R. Lutuza	Approved	A. Siancu - Dinulescu
Approved	Coordonator Sectiune 1	Approved	Responsabil Sitocant
Approved	C. Gambelli	Approved	Andreea Stancu
Checked	Giuseppe Foravanti	Checked	Designer
	12. 2011		12. 2011

Reabilitarea liniei de cale ferata Brasov - Simetria pentru componenta a conditiilor IV Pan European, pentru circulatia trenurilor cu viteza maxima de 160 km/h.  
 Reabilitation of the railway line Brasov - Simetria, component Part of the IV Pan-European Corridor, for the trans circulation with maximum speed of 160 km/h.  
 Section : Brasov - Sighisoara

Denumire desen / Drawing Title :  
 STATIA VANATORI DEMOLARE DEMOLARE MAGAZIE FATADE: SECTIUNI  
 RAILWAY STATION VANATORI STORING HOUSE FACADES: SECTIONS

Codificare / Codification System	Stara / Scale	Lot / Lot	Nr. / Nr.
E A S I	1 : 50	01 / 01	01 / 01
01		0	0
17		0	0
A B		0	0
C C		0	0
02		0	0
0		0	0
0		0	0