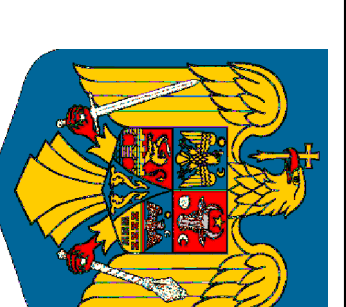
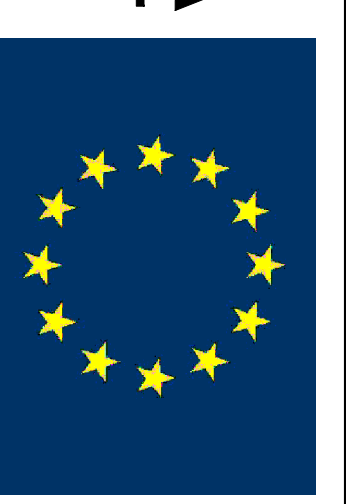


D					
C					
B					
A					
Indice Index	Data Date	Modificare Modification/Revision	Proiectant Designer	Aprobat Consultant Approved Consultant	Aprobat CFR Approved CFR



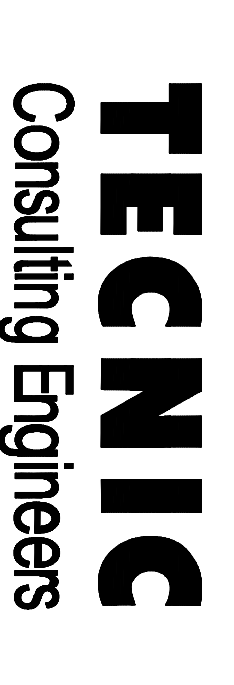
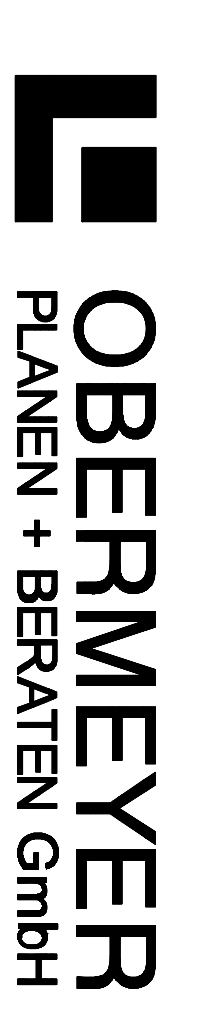
GUVERNUL ROMANIEI
ROMANIAN GOVERNMENT

PROIECT FINANȚAT DE UNIUNEA EUROPEANĂ
EUROPEAN UNION FINANCED PROJECT



C.N.C.F. "C.F.R." - S.A.

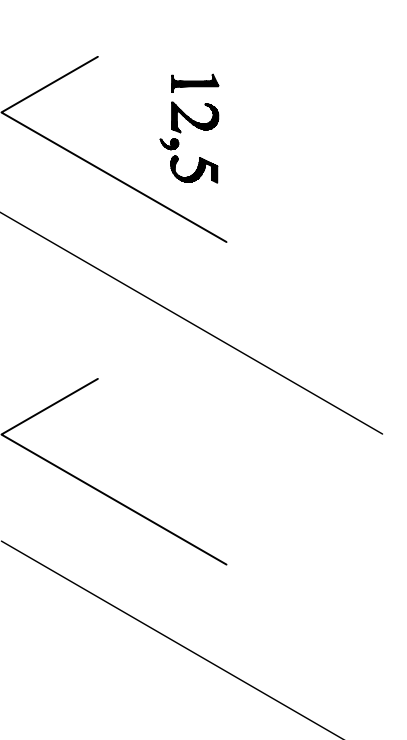
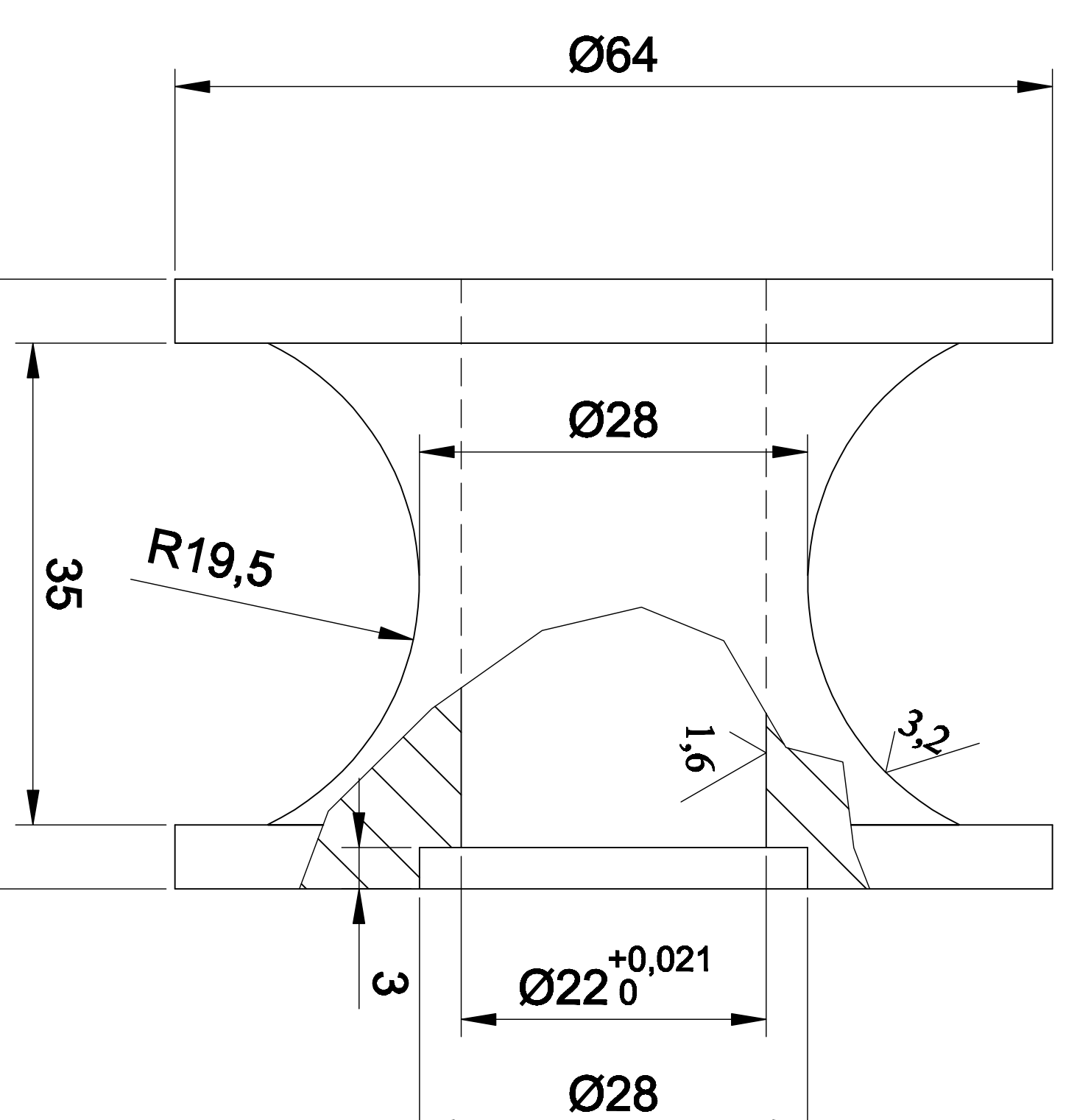
CLIENT / CLIENT



GRUPPO FERROVIE DELLO STATO
Joint Venture leader

PLANEN + BERATEN GmbH

Consulting Engineers



NOTĂ:

- Muchiile ascuțite se vor rotunji R0,5
- MATERIAL: OL 52
- Masa: 0,45kg

NOTE:

- Sharp edges will be rounded R0,5
- MATERIALS: OL 52
- Masse: 0,45kg

CONSULTANT / CONSULTANT		Data Date	Semnătură Signature
Aprobat Approved	Șef proiect Project manager	R. Liuzza	
Aprobat Approved	Coordonator Secțiune 1 Section 1 Coordinator	C. Gambelli	
Verificat Verified	Verificator Verifier	Giuseppe Fioravanti	
Checkat Checked			

SUBCONTRACTANT / SUBCONTRACTOR



SUBCONTRACTANT / SUBCONTRACTOR		Responsabil Subcontractant Subcontractant Responsible
Aprobat Approved		A. Stanciu - Dinulescu
Elaborat Elaborated		Dorin Gavril

Reabilitarea liniei de cale ferată Brașov - Simeria, parte componentă a coridorului IV Pan European, pentru circulația trenurilor cu viteză maximă de 160 km/h,
Tronsonul : Brașov - Sighișoara
Rehabilitation of the railway line Brașov - Simeria, component Part of the IV Pan-European Corridor, for the trains circulation with maximum speed of 160 km/h,
Section : Brașov - Sighișoara

Proiect/Project
2004/RO/16/PP/PA/003
Faza / Phase:
D.E. / E.D.

Denumire desen / Drawing Title :

ROLĂ
ROLL

ANSAMBLU ROATĂ GHIDARE/GUIDE WHEEL ASSEMBLY
POARTA GARD PROTECȚIE/GATE PROTECTION FENCE

Codificare / Codification System		Scara / Scale 1 : 1	LOT / LOT	Nr. / No 01 / 01
E	A	5	1	0
0	1	E	0	0
0	0	B	W	0
0	0	C	C	0
0	0	0	0	0
0	1	8	0	1
0	1	4	0	1
0	1	4	0	0

A3(420x297)=0,125m²