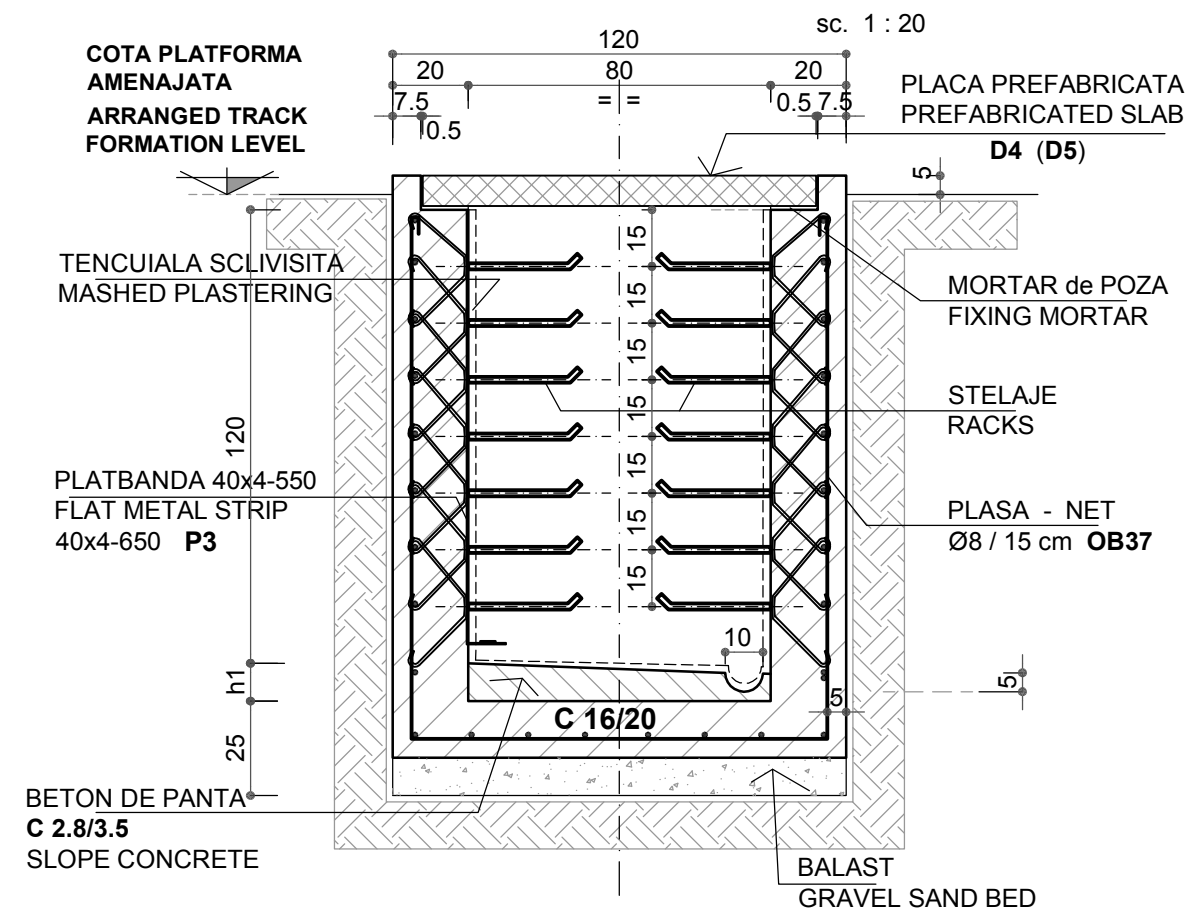
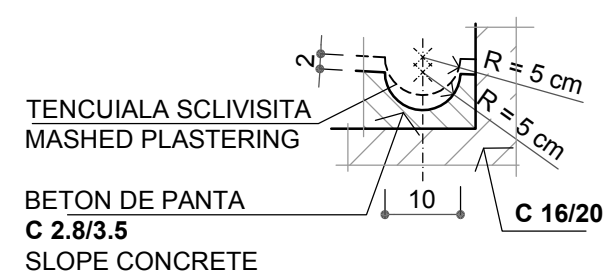


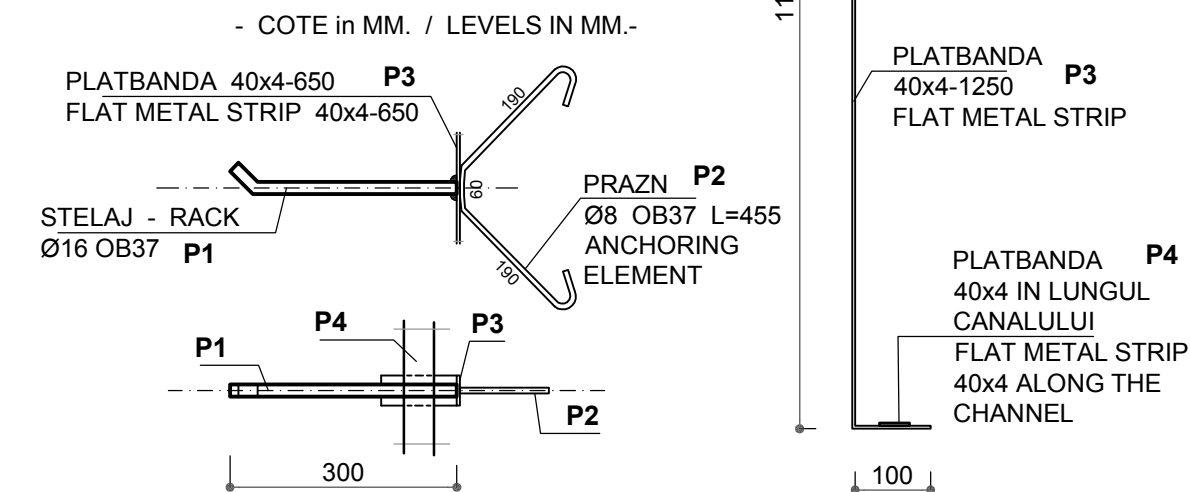
CANAL CABLURI - CABLES CHANNEL 800x1200 mm



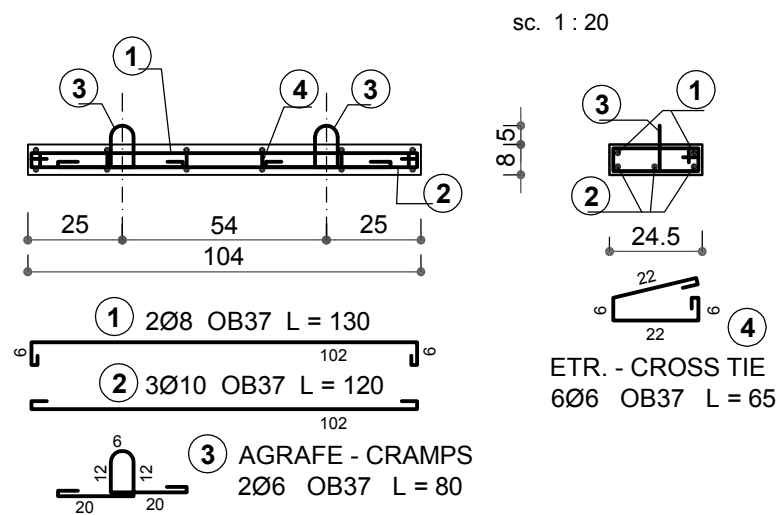
DETALIU RIGOLA DRAIN DETAIL



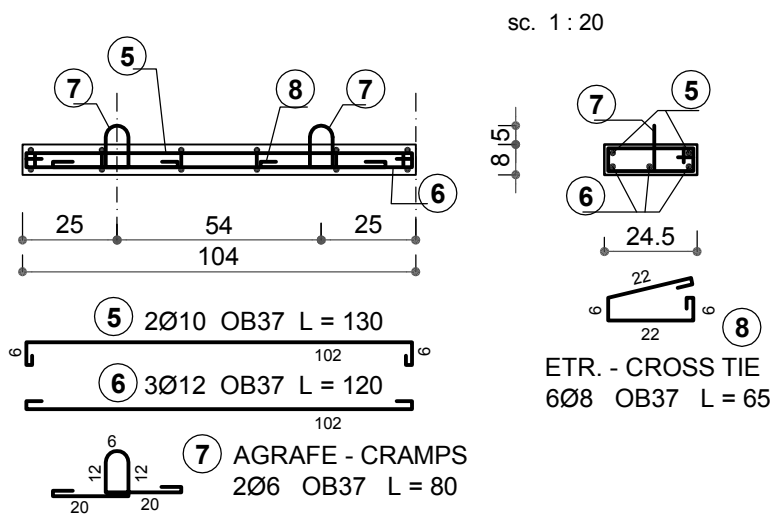
DETALII STELAJ DETAILS FOR RACK



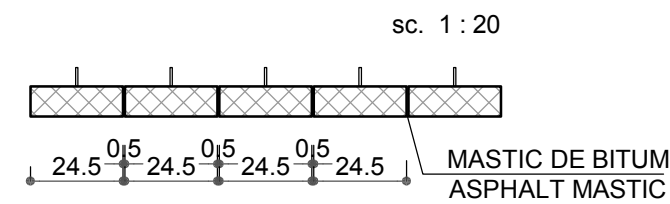
DALA PREFABRICATA PREFABRICATED SLAB D6 104x24.5x8 cm C25/30



DALA PREFABRICATA PREFABRICATED SLAB D7 104x24.5x8 cm C25/30



DETALIU PENTRU BITUMINAREA ROSTURILOR DETAIL FOR BITUMEN COVERING OF JOINTS



CARACTERISTICI DALE PREFABRICATE CHARACTERISTICS of PREFABRICATED SLABS

TIP PREFABRICAT PREFABRICATED TYPE	VOLUM BETON CONCRET VOLUME - mc.-	GREUTATE PREFABRICAT WEIGHT - kg.-	GREUTATE ARMATURA REINFORCEMENT WEIGHT - kg.-	COFRAJ SHUTTERING - mp.-	CLASA BETON CONCRET CLASS
PLACA PLATE D6	0.0204	51.00	5.4	0.88	C 25/30
PLACA PLATE D7	0.0204	53.06	8.0	0.88	C 25/30

EXTRAS LAMINATE TABLE OF ROLLED ELEMENTS FOR 1 SET OF RACKS (left)

POZ. POSITION	DENUMIRE DENOMINATION	DIMENSIUNI DIMENSIONS	LUNG. LENGHT - mm.-	NR. BUC. No of PIECES	GREUTATE - WEIGHT - kg.- / ml. / buc. per piece	TOTAL
P1	STELAJ RACK OB37	Ø16	300	14	1.578 / 0.474	6.64
P2	PRAZN ANCHORING ELEMENT OB37	Ø8	455	14	0.395 / 0.18	2.52
P3	PLATBANDA FLAT METAL STRIP	40x4	1250	2	1.57 / 1.97	3.94
P4	PLATBANDA FLAT METAL STRIP	40x4	800	2	1.57 / 1.26	2.52
TOTAL / TOTAL						15.62
ELECTROZI / ELECTRODES 1.5 %						0.24
TOLERANTA / TOLERANCE 4 %						0.64
TOLERANTA / TOLERANCE 4 %						0.064
TOTAL / TOTAL						16.60 kg

NOTA / NOTE

- STELAJELE SE VOR AMPLASA IN LUNGUL CANALULUI LA DISTANTELE DE 70 - 80 cm PENTRU A SE EVITA DEFORMAREA CABELOR. THE RACKS WILL BE PLACED ALONG THE CHANNEL AT 70-80 cm DISTANCE TO AVOID THE CABLE DEFORMATION.
- PREFABRICATELE TIP D7 SE VOR INSTALA IN ZONELE IN CARE CANALUL DE CABLURI INTERSECTEAZA DRUMUL. THE TYPE D7 PREFABRICATED SLABS WILL BE USED AT THE INTERSECTION WITH THE ACCESS ROAD.
- PENTRU SCURGEREA APELOR CARE PATRUND IN CANAL SE VA DA O PANTA IN LUNG DE 0.5% CATRE PUTURILE ABSORBANTE, CONF. PLAN AMPLASAMENT. TO ENSURE THE WATER DISCHARGE ENTERING INTO THE CHANNEL, A 0.5 % LONGITUDINAL SLOPE WILL BE PROVIDED TOWARDS THE ABSORBING PITS ACCORDING TO THE LOCATION PLAN.

ELEM. ELEMENT	MARCA MARK	Ø	NR. BUC. No of PCS	LUNG. BARA BAR LENGTH - m.-	LUNGIMI / DIAMETRE LENGTHS / DIAMETERS			
					OB 37	Ø6	Ø8	Ø10
1	8	2	1.55		3.1			
2	10	3	1.45			4.4		
3	6	2	0.80	1.6				
4	6	6	0.65	3.9				
LUNGIMI / DIAMETRE LENGTH / DIAMETERS					5.5	3.1	4.4	
LUNGIME / M. / DIAMETRU LENGTH / M. / DIAMETER					0.222	0.395	0.617	
GREUTATE / DIAMETRE WEIGHT / DIAMETERS					1.25	1.35	2.80	
TOTAL / TOTAL					5.4 kg			

ELEM. ELEMENT	MARCA MARK	Ø	NR. BUC. No of PCS	LUNG. BARA BAR LENGTH - m.-	LUNGIMI / DIAMETRE LENGTHS / DIAMETERS			
					OB 37	Ø6	Ø8	Ø10
5	10	2	1.55			3.1		
6	12	3	1.45				4.4	
7	6	2	0.80	1.6				
8	8	6	0.65	3.9				
LUNGIMI / DIAMETRE LENGTH / DIAMETERS					1.6	3.9	3.1	4.4
LUNGIME / M. / DIAMETRU LENGTH / M. / DIAMETER					0.222	0.395	0.617	0.888
GREUTATE / DIAMETRE WEIGHT / DIAMETERS					0.48	1.57	1.97	3.98
TOTAL / TOTAL					8.0 kg			

BETON de PANTA : **C 2.8 / 3.5**
SLOPE CONCRETE : **C 2.8 / 3.5**
BETON ARMAT : **C 16/20, C 25/30**
REINFORCED CONCRETE : **C 16/20, C 25/30**

OTEL BETON : **OB 37**
STRUCTURAL STEEL : **OB 37**
OTEL LAMINAT : **S235JR**
ROLLED STEEL : **S235JR**

D					
C					
B					
A					
Indice Index	Data Date	Modificare Modification/Revision	Proiectant Designer	Aprobat Consultant Approved Consultant	Aprobat CFR Approved CFR



CONSULTANT / CONSULTANT			Data Date	Semnătură Signature
Aprobat Approved	Şef proiect Project manager	R. Liuzza	12.2011	<i>[Signature]</i>
Aprobat Approved	Coordonator Secțiune 1 Section 1 Coordinator	C. Gambelli	12.2011	<i>[Signature]</i>
Verificat Checked	Verificator Verifier	Giuseppe Fioravanti	12.2011	<i>[Signature]</i>

SUBCONTRACTANT / SUBCONTRACTOR			Data Date	Semnătură Signature
Aprobat Approved	Responsabil Subconsultant Subconsultant Responsible	A.Stanciu - Dinulescu	12.2011	<i>[Signature]</i>
Intocmit Elaborated	Proiectant Designer	Georgescu Toma Cristian	12.2011	<i>[Signature]</i>

Reabilitarea liniei de cale ferata Braşov - Simeria, parte componentă a coridorului IV Pan European, pentru circulația trenurilor cu viteză maximă de 160 km/h, **Tronsozul : Braşov - Sighişoara**
Rehabilitation of the railway line Braşov - Simeria, component Part of the IV Pan-European Corridor, for the trains circulation with maximum speed of 160 km/h, **Section : Braşov - Sighişoara**

Proiect/Project 2004/RO/16/P/PA/003
Faza / Phase: D.E. / E.D.

Denumire desen / Drawing Title : SUBSTATIE TRACTIUNE - CONSTRUCTII EXTERIOARE - TRACTION SUBSTATION - OUTDOOR CONSTRUCTION			
CANAL CABLURI 800x1200 mm CABLES CHANNEL 800x1200 mm			
Codificare / Codification System	Scara / Scale 1:20	LOT / LOT	Nr. / No 01 / 01
E A 5 1 0 1 E 0 0 B C A C 0 0 0 4 0 1 9 0			