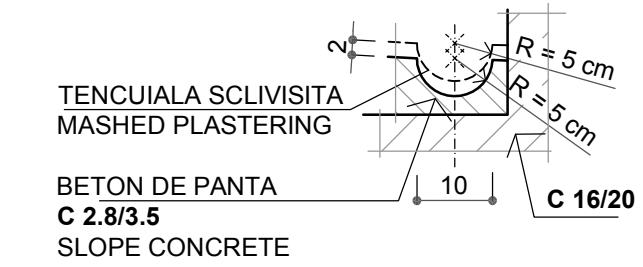


DETALIU RIGOLA DRAIN DETAIL

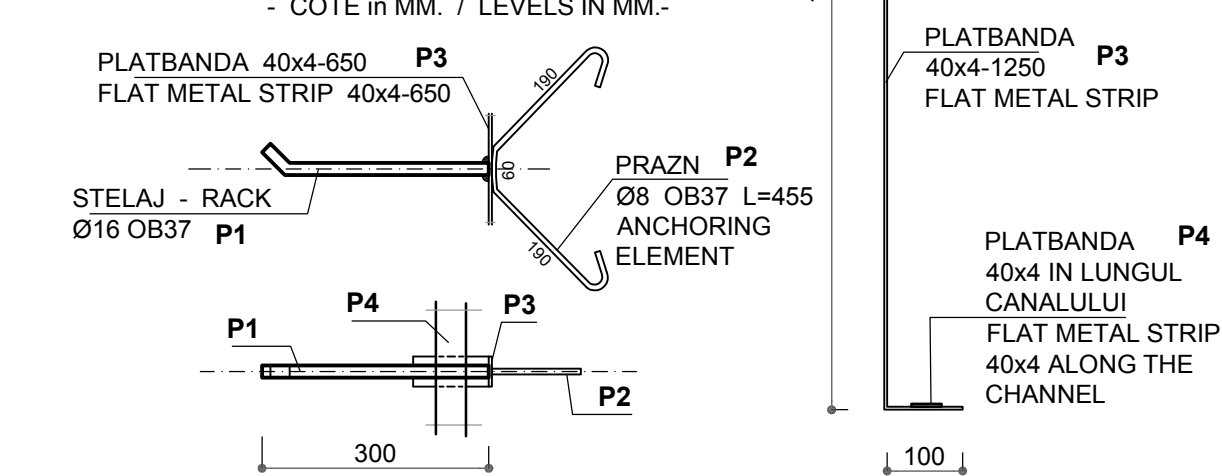
sc. 1 : 10



DETALII STELAJ DETAILS FOR RACK

sc. 1 : 10

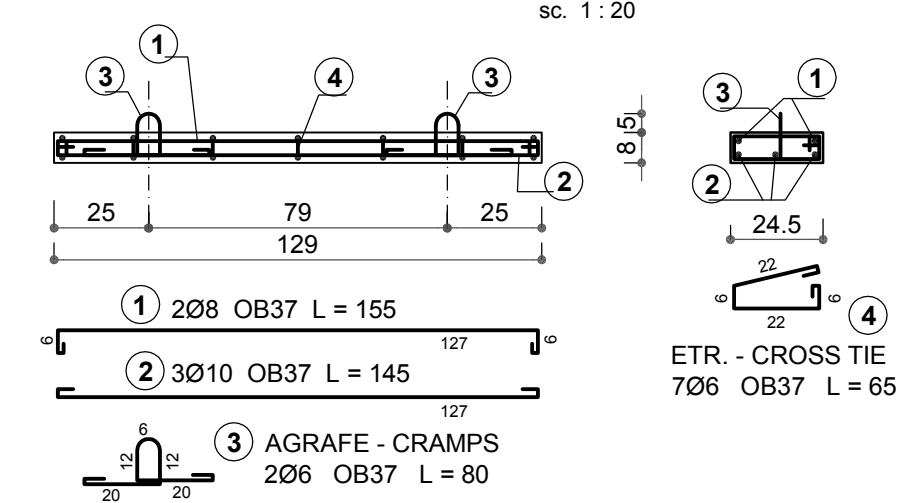
- COTE in MM. / LEVELS IN MM.-



DALA PREFABRICATA PREFABRICATED SLAB

D4 129x24.5x8 cm C25/30

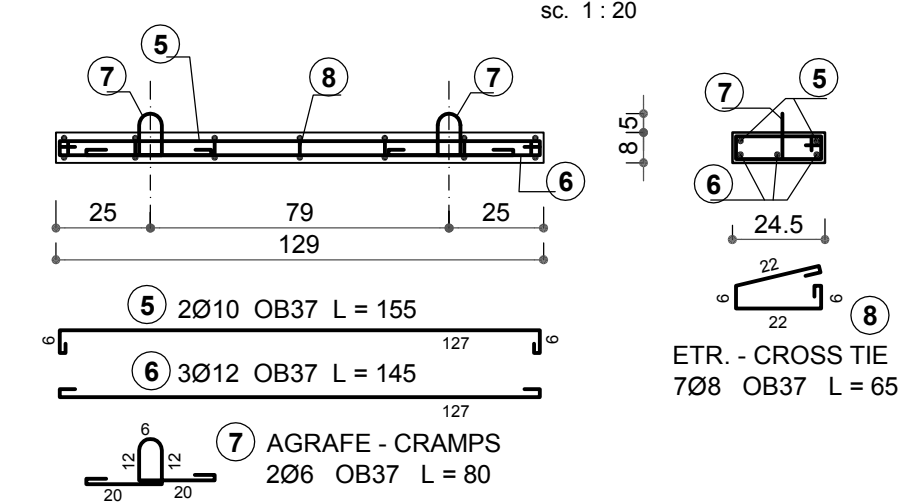
sc. 1 : 20



DALA PREFABRICATA PREFABRICATED SLAB

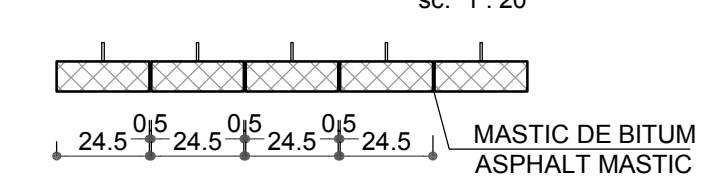
D5 129x24.5x8 cm C25/30

sc. 1 : 20



DETALIU PENTRU BITUMINAREA ROSTURILOR DETAIL FOR BITUMEN COVERING OF JOINTS

sc. 1 : 20



CARACTERISTICI DALE PREFABRICATE CHARACTERISTICS OF PREFABRICATED SLABS

TIP PREFABRICAT PREFABRICATED TYPE	VOLUM BETON CONCRETE VOLUME - mc.-	GREUTATE PREFABRICAT PREFABRICATED WEIGHT - kg.-	GREUTATE ARMATURA REINFORCEMENT WEIGHT - kg.-	COFRAJ SHUTTERING - mp.-	CLASA BETON CONCRETE CLASS
PLACA PLATE D4	0.0253	63.25	5.6	0.88	C 25/30
PLACA PLATE D5	0.0253	66.05	8.4	0.88	C 25/30

EXTRAS LAMINATE TABLE OF ROLLED ELEMENTS FOR 1 SET OF RACKS (left)

POZ. POSITION	DENUMIRE DENOMINATION	DIMENSIUNI DIMENSIONS	LUNG. LENGHT - mm.-	NR. BUC. No of PIECES	GREUTATE - WEIGHT - kg.- / ml. per piece	TOTAL	
P1	STELAJ RACK Ø16 OB37	Ø16	300	14	1.578	0.474	6.64
P2	PRAZN ANCHORING ELEMENT Ø8 OB37	Ø8	455	14	0.395	0.18	2.52
P3	PLATBANDA FLAT METAL STRIP 40x4	40x4	1250	2	1.57	1.97	3.94
P4	PLATBANDA FLAT METAL STRIP 40x4	40x4	800	2	1.57	1.26	2.52
TOTAL / TOTAL							15.62
ELECTROZI / ELECTRODES 1.5 %							0.24
TOLERANTA / TOLERANCE 4 %							0.64
TOLERANTA / TOLERANCE 4 %							0.064
TOTAL / TOTAL							16.60 kg

NOTA / NOTE

- STELAJELE SE VOR AMPLASA IN LUNGUL CANALULUI LA DISTANTELE DE 70 - 80 cm PENTRU A SE EVITA DEFORMAREA CABELOR. THE RACKS WILL BE PLACED ALONG THE CHANNEL AT 70-80 cm DISTANCE TO AVOID THE CABLE DEFORMATION.
- PREFABRICATELE TIP D5 SE VOR INSTALA IN ZONELE IN CARE CANALUL DE CABLURI INTERSECTEAZA DRUMUL. THE TYPE D5 PREFABRICATED SLABS WILL BE USED AT THE INTERSECTION WITH THE ACCESS ROAD.
- PENTRU SCURGEREA APELOR CARE PATRUND IN CANAL SE VA DA O PANTA IN LUNG DE 0.5% CATRE PUTURILE ABSORBANTE, CONF. PLAN AMPLASAMENT. TO ENSURE THE WATER DISCHARGE ENTERING INTO THE CHANNEL, A 0.5 % LONGITUDINAL SLOPE WILL BE PROVIDED TOWARDS THE ABSORBING PITS ACCORDING TO THE LOCATION PLAN.

ELEM. ELEMENT	MARCA MARK	Ø	NR. BUC. No of PCS	LUNG. BARA BAR LENGTH - m.-	LUNGIMI / DIAMETRE LENGHTS / DIAMETERS		
					Ø6	Ø8	Ø10
D4 129x24.5x8 cm D4 129x24.5x8 cm	1	8	2	1.55		3.1	
	2	10	3	1.45			4.4
	3	6	2	0.80	1.6		
	4	6	7	0.65	4.6		
LUNGIMI / DIAMETRE LENGHT / DIAMETERS					6.2	3.1	4.4
LUNGIME / M. / DIAMETRU LENGHT / M. / DIAMETER					0.222	0.395	0.617
GREUTATE / DIAMETRE WEIGHT / DIAMETERS					1.45	1.35	2.80
TOTAL / TOTAL					5.6 kg		

ELEM. ELEMENT	MARCA MARK	Ø	NR. BUC. No of PCS	LUNG. BARA BAR LENGTH - m.-	LUNGIMI / DIAMETRE LENGHTS / DIAMETERS			
					Ø6	Ø8	Ø10	Ø12
D5 129x24.5x8 cm D5 129x24.5x8 cm	5	10	2	1.55			3.1	
	6	12	3	1.45				4.4
	7	6	2	0.80	1.6			
	8	8	7	0.65		4.6		
LUNGIMI / DIAMETRE LENGHT / DIAMETERS					1.6	4.6	3.1	4.4
LUNGIME / M. / DIAMETRU LENGHT / M. / DIAMETER					0.222	0.395	0.617	0.888
GREUTATE / DIAMETRE WEIGHT / DIAMETERS					0.48	1.94	1.99	3.98
TOTAL / TOTAL					8.4 kg			

BETON de PANTA : C 2.8 / 3.5
SLOPE CONCRETE : C 2.8 / 3.5

BETON ARMAT : C 16/20, C 25/30
REINFORCED CONCRETE :
C 16/20, C 25/30

OTEL BETON : OB 37
STRUCTURAL STEEL : OB 37

OTEL LAMINAT : S235JR
ROLLED STEEL : S235JR

Indice Index	Data Date	Modificare Modification/Revision	Proiectant Designer	Aprobat Consultant Approved Consultant	Aprobat CFR Approved CFR
D					
C					
B					
A					

GUVERNUL ROMANIEI
ROMANIAN GOVERNMENT

PROIECT FINANȚAT DE UNIUNEA EUROPEANĂ
EUROPEAN UNION FINANCED PROJECT

CFR

C.N.C.F. "C.F.R." - S.A.

CLIENT / CLIENT

ITALFERR
GRUPPO FERROVIE DELLO STATO
Joint Venture leader

Scott
Wilson

OBERMEYER
PLANEN + BERATEN GmbH

TECNIC
Consulting Engineers

CONSULTANT / CONSULTANT			Data Date	Semnătură Signature
Aprobat Approved	Şef proiect Project manager	R. Liuzza	12.2011	
Aprobat Approved	Coordonator Secțiune 1 Section 1 Coordinator	C. Gambelli	12.2011	
Verificat Checked	Verificator Verifier	Giuseppe Fioravanti	12.2011	

SUBCONTRACTANT / SUBCONTRACTOR			Data Date	Semnătură Signature
Aprobat Approved	Responsabil Subconsultant Subconsultant Responsible	A.Stanciu - Dinulescu	12.2011	
Intocmit Elaborated	Proiectant Designer	Georgescu Toma Cristian	12.2011	

Reabilitarea liniei de cale ferata Braşov - Simeria, parte componentă a coridorului IV Pan European, pentru circulația trenurilor cu viteză maximă de 160 km/h,
Tronsonul : Braşov - Sighişoara

Rehabilitation of the railway line Braşov - Simeria, component Part of the IV Pan-European Corridor, for the trains circulation with maximum speed of 160 km/h,
Section : Braşov - Sighişoara

Proiect/Project
2004/RO/16/PPA/003

Faza / Phase:
D.E. / E.D.

Denumire desen / Drawing Title :
SUBSTATIE TRACTIUNE - CONSTRUCTII EXTERIOARE - TRACTION SUBSTATION - OUTDOOR CONSTRUCTION

CANAL CABLURI 1200x1200 mm
CABLES CHANNEL 1200x1200 mm

Codificare / Codification System	Scara / Scale 1: 20	LOT / LOT	Nr. / No 01 / 01
E A 5 1 0 1 E 0 0 B C A C 0 0 0 4 0 2 0 0			