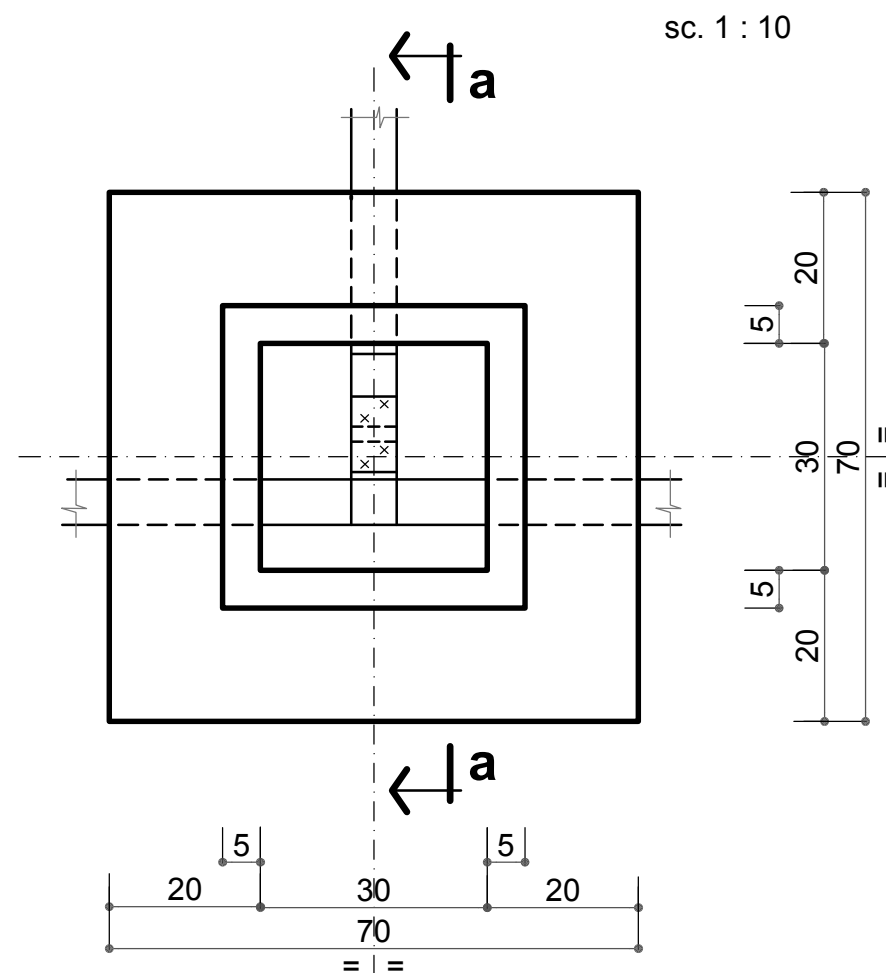
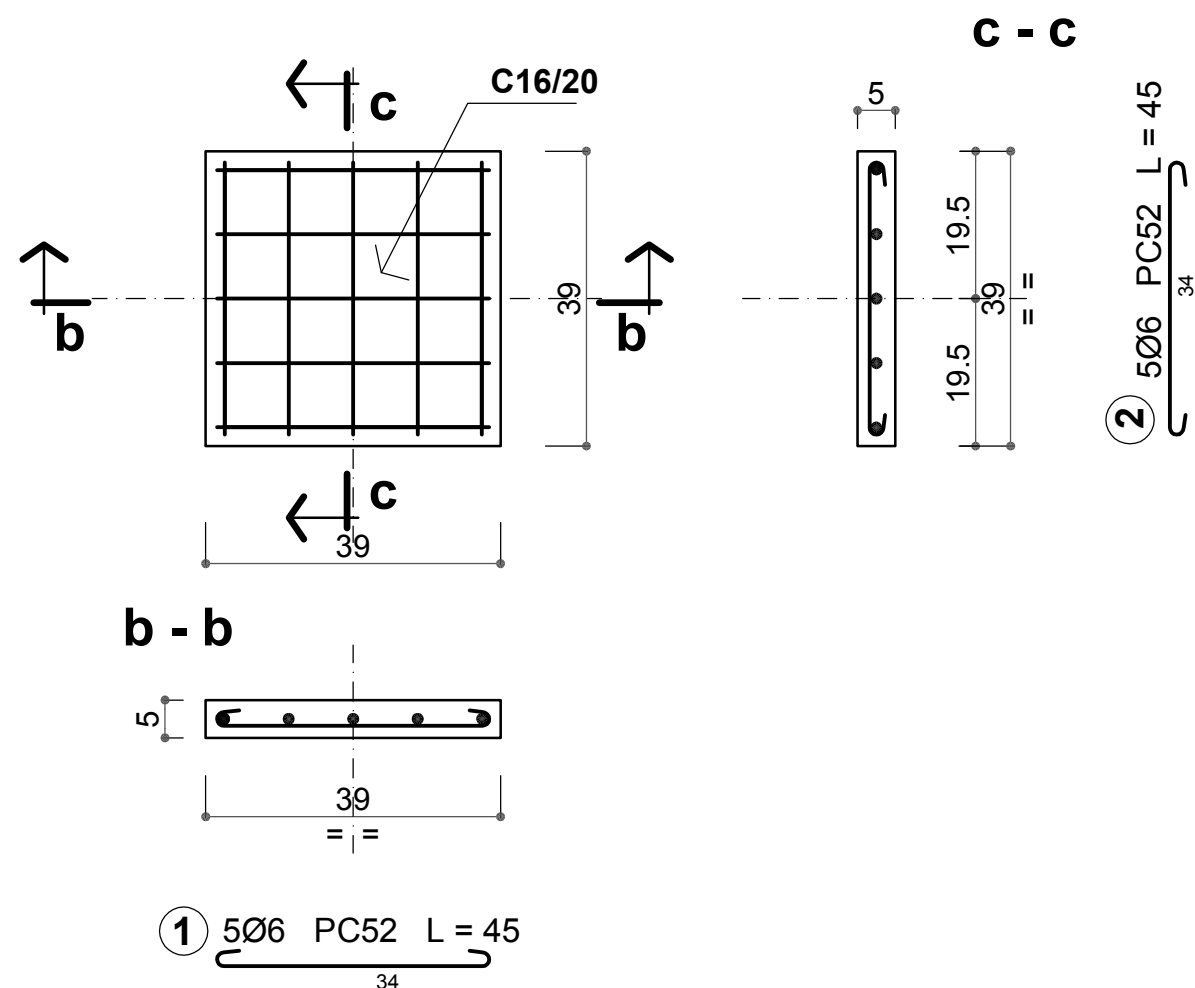


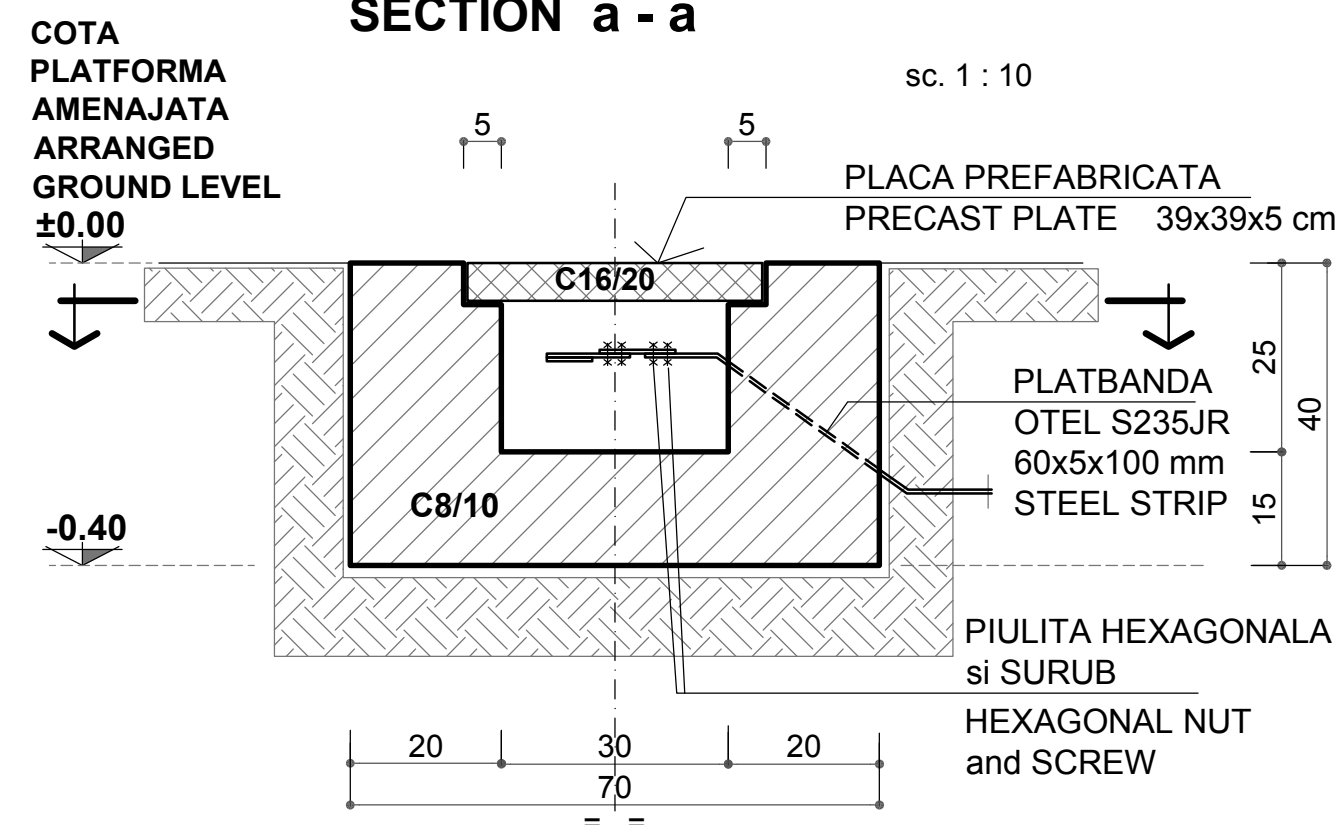
**PLAN CAMIN RACORDARE
CONNECTION MANHOLE PLAN**



**PLACA PREFABRICATA
PRECAST PLATE**
39x39x5 cm



**SECTIUNE a - a
SECTION a - a**



**TABLOU ARMARE
REINFORCEMENT TABLE**

ELEM. / ELEMENT	MARCA / MARK	Ø.	Nr. Buc. / No. of PCS.	LUNG. BARA BAR / LENGTH -m.-	LUNGIMI / Ø. / LENGTHS / Ø.	
					PC52	
					Ø 6	Ø 8
PLACA PREF. / 39x39x5 cm	1	6	5	0.45	2.3	
	2	6	5	0.45	2.3	
LUNGIME / DIAMETRE					4.5	0.0
LUNGIME / m. / DIAMETRE					0.222	0.395
GREUTATE / DIAMETRE					1.00	0.0
TOTAL GENERAL (Pc52, rot.) kg.					1.0	

* BARELE DE ARMATURA SUNT CALCULATE PENTRU O SINGURA PLACA PREFABRICATA
THE REINFORCING BARS ARE CALCULATED FOR A SINGLE ONE PRECAST PLATE.

BETON SIMPLU - PLAIN CONCRETE :
C8 / 10 (T3/T4 - II 32.5 R/0 - 16)

BETON ARMAT - REINFORCED CONCRETE :
C16 / 20 (T3/T4 - II 32.5 R/0 - 16)

OTEL BETON - STRUCTURAL STEEL : **PC52**

OTEL LAMINAT - ROLLED STEEL : **S235JR**

D					
C					
B					
A					
Indice / Index	Data / Date	Modificare / Modification/Revision	Proiectant / Designer	Aprobat Consultant / Approved Consultant	Aprobat CFR / Approved CFR



GUVERNUL ROMANIEI
ROMANIAN GOVERNMENT

PROIECT FINANȚAT DE UNIUNEA EUROPEANĂ
EUROPEAN UNION FINANCED PROJECT



C.N.C.F. "C.F.R." - S.A.

CLIENT / CLIENT



CONSULTANT / CONSULTANT

Aprobat / Approved	Șef proiect / Project manager	R. Liuzza	Data / Date	Semnătură / Signature
Aprobat / Approved	Coordonator Secțiune 1 / Section 1 Coordinator	C. Gambelli	12.2011	
Verificat / Checked	Verificator / Verifier	Giuseppe Fioravanti	12.2011	

SUBCONTRACTANT / SUBCONTRACTOR

Aprobat / Approved	Responsabil Subconsultant / Subconsultant Responsible	A.Stanciu - Dinulescu	Data / Date	Semnătură / Signature
Întocmit / Elaborated	Proiectant / Designer	Georgescu Toma Cristian	12.2011	

Reabilitarea liniei de cale ferată Brașov - Simeria, parte componentă a coridorului IV Pan European, pentru circulația trenurilor cu viteză maximă de 160 km/h,
Tronsoanel : Brașov - Sighișoara
Rehabilitation of the railway line Brașov - Simeria, component Part of the IV Pan-European Corridor, for the trains circulation with maximum speed of 160 km/h,
Section : Brașov - Sighișoara

Project/Project
2004/RO/16/P/PA/003

Faza / Phase:
D.E. / E.D.

Denumire desen / Drawing Title :
SUBSTAȚIE TRACȚIUNE - CONSTRUCTII EXTERIOARE - TRACTION SUBSTATION - OUTDOOR CONSTRUCTION

**CAMIN RACORDARE la PRIZA de PAMANT
MANHOLE FOR GROUND NETWORK CONNECTION**

Codificare / Codification System	Scara / Scale 1: 10	LOT / LOT	Nr. / No 01 / 01
----------------------------------	------------------------	-----------	---------------------

E A 5 1 0 1 E 0 0 B K A C 0 0 0 4 0 0 5 0