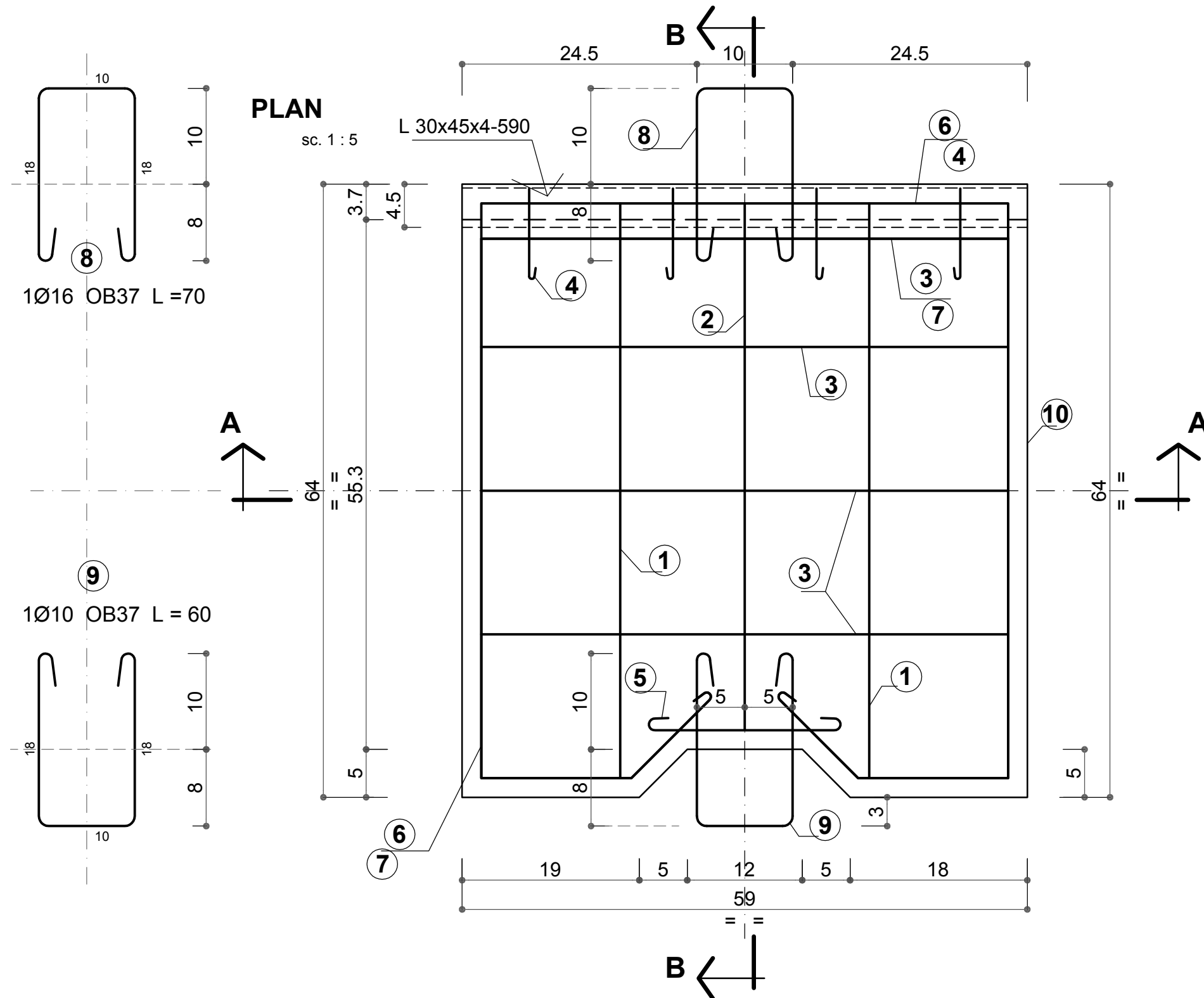


PLACA tip 2 CONTRASINA de BETON ARMAT - 64x59x14 cm
PRECAST PLATE type 2 REINFORCED CONCRETE COUNTER-RAIL - 64x59x14 cm

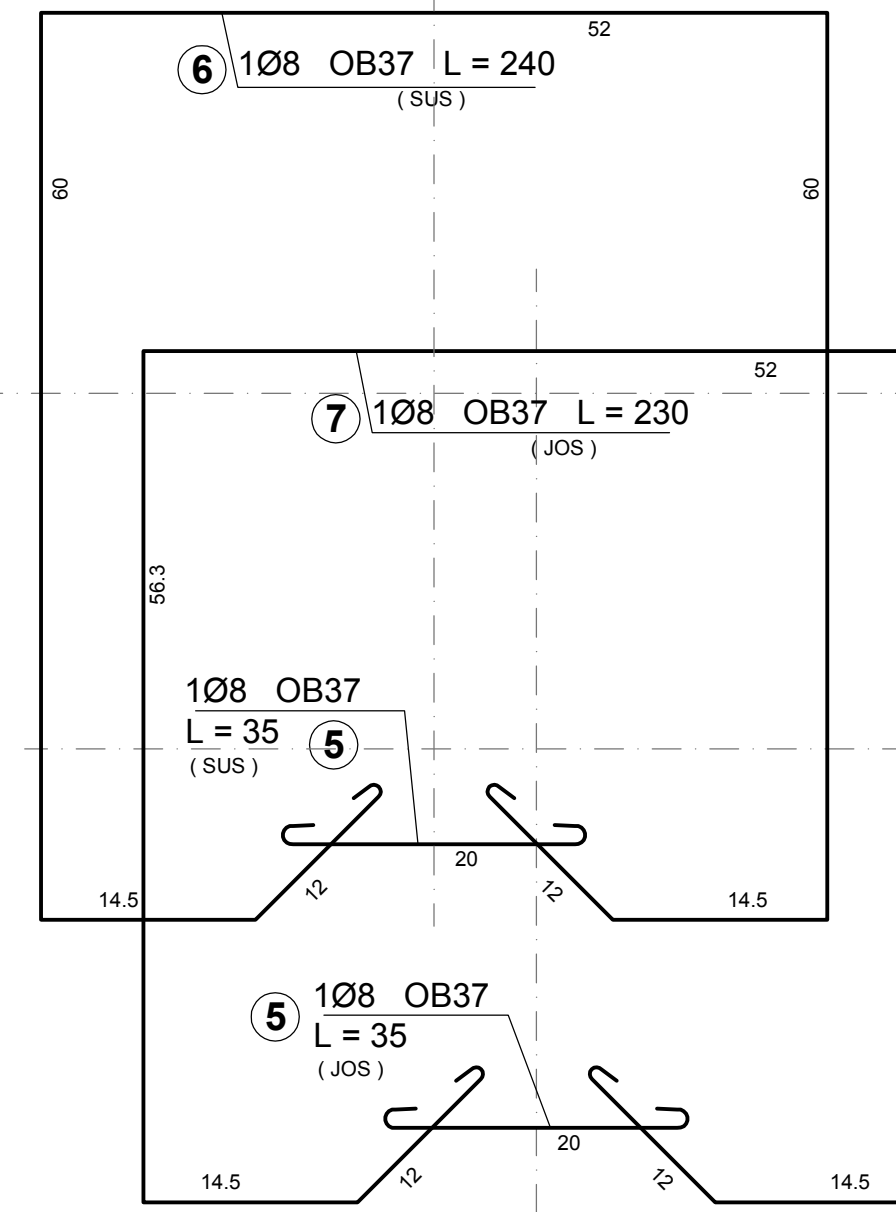
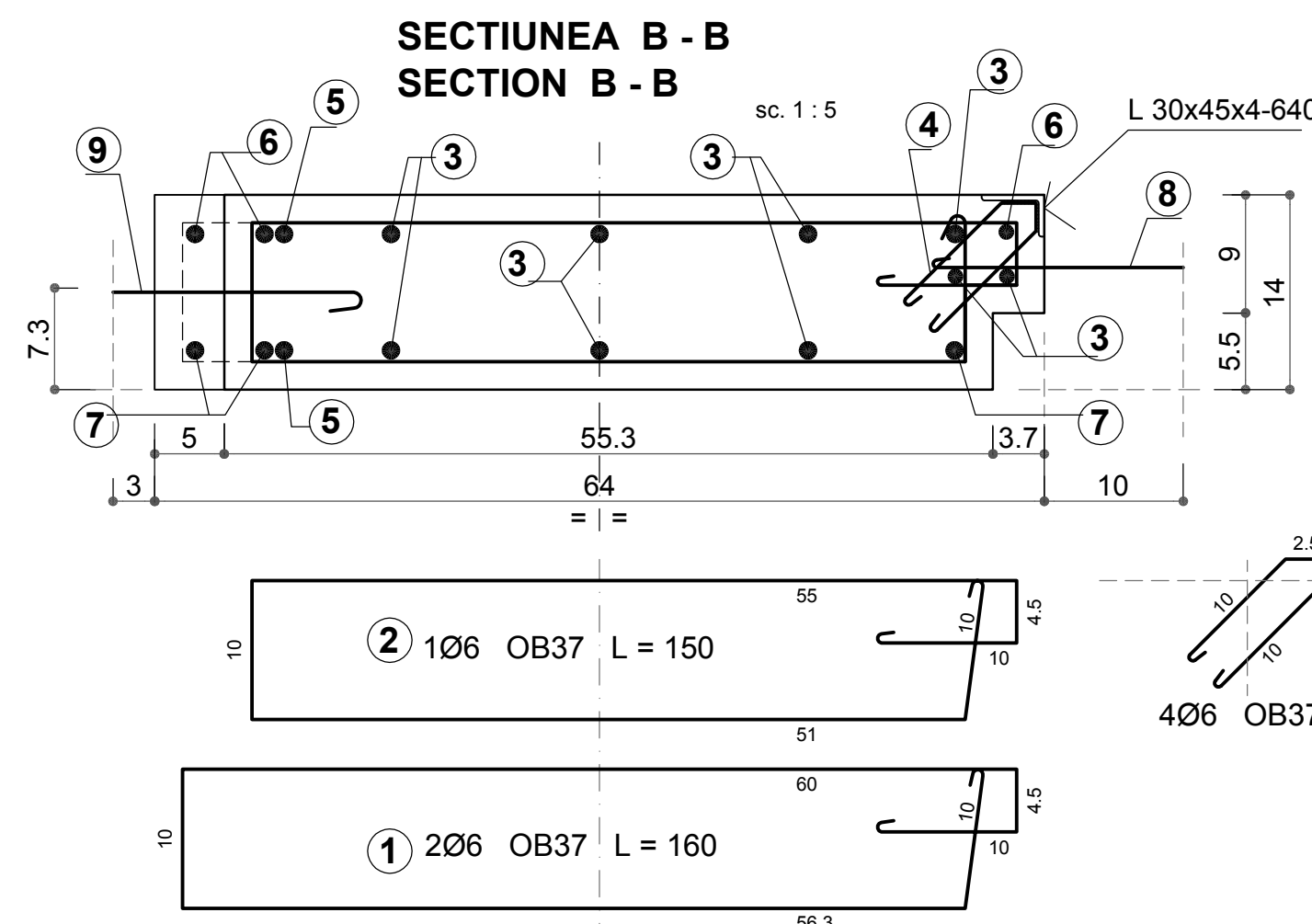
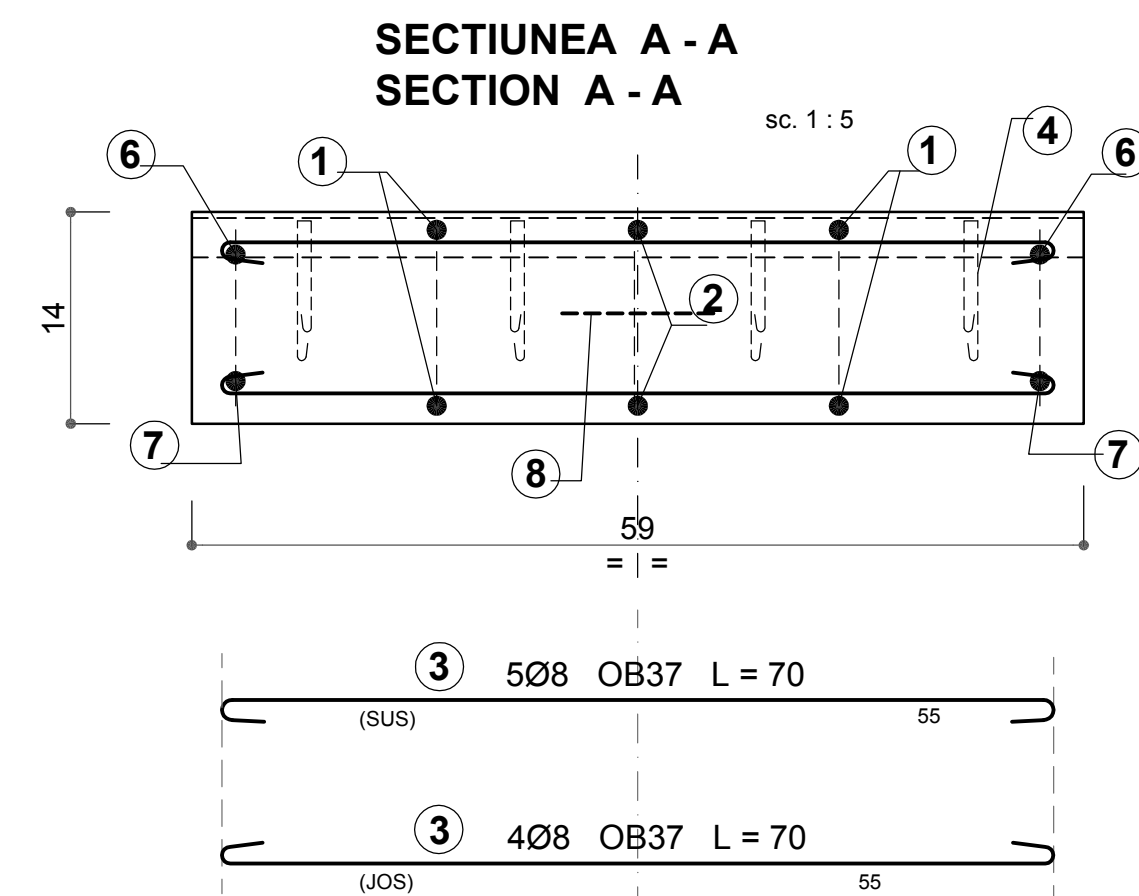
- 46 buc. / 46 pcs.-



TABLOU ARMARE
REINFORCEMENT TABLE

ELEM. ELEMENT	MARCA MARK	Ø.	NR. BUC. No. of PCS.	LUNG. BARA BAR LENGHT -m-	LUNGIMI / DIAM. - LENGHTS / Ø.			
					ØB37			
					Ø 6	Ø 8	Ø 10	Ø 16
PLACA PREF. tip 2 CONTRASINA B.A. -1 buc.-	1	6	2	1.60	3.2			
	2	6	1	1.50	1.5			
	3	8	9	0.70		6.3		
	4	6	4	0.35	1.4			
	5	8	2	0.35		0.7		
	6	8	1	2.40		2.4		
	7	8	1	2.30		2.3		
	8	16	1	0.70				0.7
	9	10	1	0.60			0.6	
LUNGIME / DIAMETRE					6.1	11.7	0.6	0.7
GREUTATE / m. / DIAMETRE					0.222	0.395	0.617	1.578
GREUTATE / DIAMETRE					1.4	4.6	0.4	1.1
TOTAL (rot.) kg. :					1.5	4.8	0.5	1.2
TOTAL GENERAL (ØB37) kg. :					8.0			

* BARELE DE ARMATURA SUNT CALCULATE PENTRU O SINGURA PLACA PREFABRICATA
 THE REINFORCING BARS ARE CALCULATED FOR A SINGLE ONE PRECAST PLATE.



MATERIALE / MATERIALS

- BETON VIBRAT cu agregat din piatra sparta
 VIBRATED CONCRETE with crushed stone aggregate
C18/22.5 (Bc22.5) CEM II/A-S 32.5N ; sort 0-16; A/C : 0.5; T3
- ARMATURA / REINFORCEMENT : **ØB37**
- ACOPERIRE / COVERING : **4 cm**
- CORNIER / ANGLE BAR -1 buc./pcs.-
30x45x4 mm, L = 59 cm 0.59x2.25 = 1.33 kg

NOTA

- CONTRASINELE DE BETON ARMAT SE ASEAZA PE TRAVESE, SPATIILE DINTRE TRAVESE SE NIVELEAZA PE 10 cm ADANCIME DE LA N.S.T. CU BALAST
- TRAVESELE POT FI DE LEMN SAU DE BETON ARMAT
- PLACILE TIP 1 POT AVEA 14 cm GROSIME SI, IN ACEST CAZ, SE INGROASA TRAVESEA CU 2 cm

NOTE

- THE REINFORCED CONCRETE GUARD RAIL WILL BE PLACED ON SLEEPERS AND THE SLEEPERS WILL BE LEVELLED WITH BALLAST FOR 10 cm DEPTH FROM S.U.L.
- THE SLEEPERS CAN BE MADE OF WOOD OR REINFORCED CONCRETE
- THE PLATES TYPE 2 CAN BE 14 cm THICK AND IN THIS CASE THE SLEEPERS WILL BE 2 cm THICKER.

CARACTERISTICI PREFABRICATE
PREFABRICATED CHARACTERISTICS

TIP PREFABRICAT PREFAB.ELEM.TYPE	VOLUM BETON Bc22.5 CONCRETE VOL. Bc22.5 - m³ -	MASA ELEMENT ELEMENT MASS	COFRAJ SHUTTERING - m² -	MARCA OTEL STEEL MARK - kg -	TOTAL ARMATURA REINFORCEMENT - TOTAL
ØB37					
2	0.051 m³	128 kg	0.80	8.0	8.0
TOTAL 46 buc. TOTAL 46 pcs.	2.346 m³	5.89 t	36.8	368.0	368.0

Indice Index	Data Date	Modificare Modification/Revision	Proiectant Designer	Aprobat Consultant Approved Consultant	Aprobat CFR Approved CFR

GUVERNUL ROMANIEI ROMANIAN GOVERNMENT
PROIECT FINANȚAT DE UNIUNEA EUROPEANĂ EUROPEAN UNION FINANCED PROJECT

C.N.C.F. "C.F.R." - S.A.
CLIENT / CLIENT

CONSULTANT / CONSULTANT

Aprobat Approved	Șef proiect Project manager	R. Liuzza	Data Date	Semnătură Signature
Aprobat Approved	Coordonator Secțiune 1 Section 1 Coordinator	C. Gambelli	12.2011	
Verificat Checked	Verificator Verifier	Giuseppe Fioravanti	12.2011	

Aprobat Approved	Responsabil Subconsultant Subconsultant Responsible	A.Stanciu - Dinulescu	Data Date	Semnătură Signature
Întocmit Elaborated	Proiectant Designer	Georgescu Toma Cristian	12.2011	

Reabilitarea liniei de cale ferata Braşov - Simeria, parte componentă a coridorului IV Pan European, pentru circulația trenurilor cu viteză maximă de 160 km/h,
Tronsonul : Braşov - Sighişoara
 Rehabilitation of the railway line Braşov - Simeria, component Part of the IV Pan-European Corridor, for the trains circulation with maximum speed of 160 km/h,
Section : Braşov - Sighişoara

Denumire desen / Drawing Title :
 SUBSTAȚIE TRACȚIUNE - CONSTRUCTII EXTERIOARE - TRACTION SUBSTATION - OUTDOOR CONSTRUCTION
PLACA CONTRASINA PREFABRICATA DE BETON ARMAT tip 2 - 64x59x14 cm
PRECAST COUNTER-RAIL REINFORCED CONCRETE PLATE type 2 - 64x59x14 cm

Codificare / Codification System	Scara / Scale 1:5	LOT / LOT	Nr. / No 01 / 01
E A 5 1 0 1 E 0 0 B Y A C 0 0 0 4 0 0 7 0			