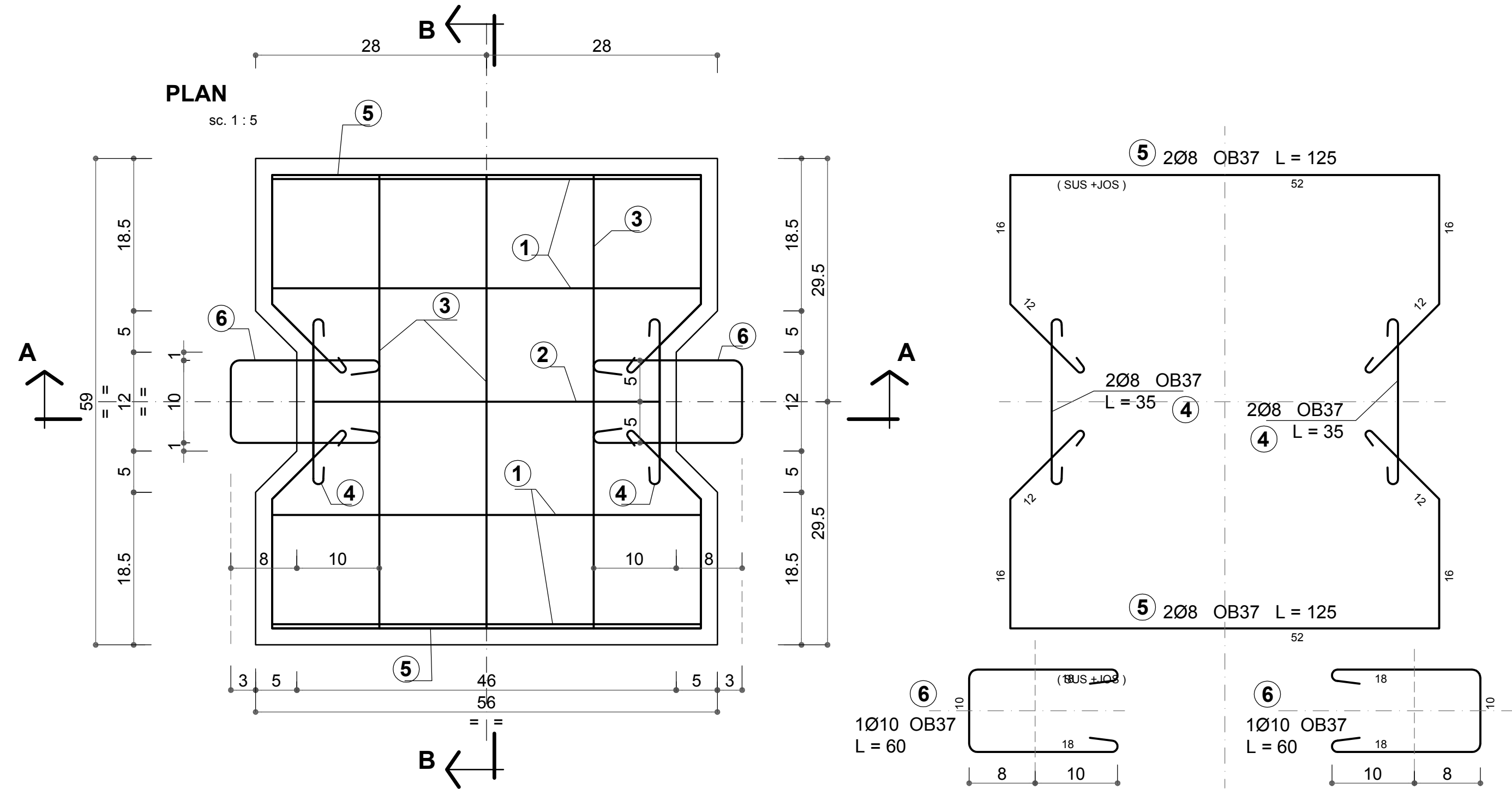


PLACA tip 4 CONTRASINA de BETON ARMAT - 59x56x14 cm
PRECAST PLATE type 4 REINFORCED CONCRETE COUNTER-RAIL - 59x56x14 cm

- 24 buc. / 24 pcs.-



CARACTERISTICI PREFABRICATE
PREFABRICATED CHARACTERISTICS

TIP PREFABRICAT PREFAB.ELEM.TYPE	VOLUM BETON Bc22.5 CONCRETE VOL. Bc22.5 - m ³ -	MASA ELEMENT ELEMENT MASS	COFRAJ SHUTTERING - m ² -	MARCA OTEL STEEL MARK - kg.- OB37	TOTAL ARMATURA REINFORCEMENT - TOTAL
4	0.05 m³	125 kg	0.38	7.0	7.0
TOTAL 24 buc.	1.20 m³	3000 kg	9.12	168.0	168.0
TOTAL 24 pcs.					

MATERIALE / MATERIALS





- BETON VIBRAT cu agregat din piatra sparta
VIBRATED CONCRETE with crushed stone aggregate
C18/22.5 (Bc22.5) CEM II/A-S 32.5N ; sort 0-16; A/C : 0.65; T3
- ARMATURA / REINFORCEMENT : **OB37**
- ACOPERIRE / COVERING : **4 cm**

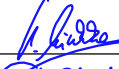
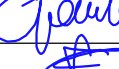

Indice Index	Data Date	Modificare Modification/Revision	Proiectant Designer	Aprobat Consultant Approved Consultant	Aprobat CFR Approved CFR


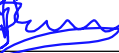
 **GUVERNUL ROMANIEI**
ROMANIAN GOVERNMENT

 **PROIECT FINANȚAT DE UNIUNEA EUROPEANĂ**
EUROPEAN UNION FINANCED PROJECT

 **C.N.C.F. "C.F.R." - S.A.**
CLIENT / CLIENT

   
CONSULTANT / CONSULTANT

Aprobat Approved	Șef proiect Project manager	R. Liuzza	Data Date	Semnătură Signature
			12.2011	
Aprobat Approved	Coordonator Secțiune 1 Section 1 Coordinator	C. Gambelli	12.2011	
Verificat Checked	Verificator Verifier	Giuseppe Fioravanti	12.2011	

Aprobat Approved	Responsabil Subconsultant Subconsultant Responsible	A.Stanciu - Dinulescu	Data Date	Semnătură Signature
			12.2011	
			12.2011	

Reabilitarea liniei de cale ferata Brașov - Simeria, parte componentă a coridorului IV Pan European, pentru circulația trenurilor cu viteză maximă de 160 km/h,
Tronsonul : Brașov - Sighișoara
Rehabilitation of the railway line Brașov - Simeria, component Part of the IV Pan-European Corridor, for the trains circulation with maximum speed of 160 km/h,
Section : Brașov - Sighișoara

Project/Project
2004/RO/16/P/PA/003
 Faza / Phase:
 D.E. / E.D.

Denumire desen / Drawing Title :
 SUBSTAȚIE TRACȚIUNE - CONSTRUCTII EXTERIOARE - TRACTION SUBSTATION - OUTDOOR CONSTRUCTION

PLACA CONTRASINA PREFABRICATA DE BETON ARMAT tip 4 - 59x56x14 cm
PRECAST COUNTER-RAIL REINFORCED CONCRETE PLATE type 4 - 59x56x14 cm

Codificare / Codification System	Scara / Scale 1:5	LOT / LOT	Nr. / No 01 / 01

E A 5 1 0 1 E 0 0 B Y A C 0 0 0 4 0 0 9 0

TABLOU ARMARE
REINFORCEMENT TABLE

ELEM. ELEMENT	MARCA MARK	Ø.	NR. BUC. No. of PCS.	LUNG. BARA BAR LENGHT m	LUNGIMI / DIAM. LENGHTS / Ø.		
					OB37		
					Ø 6	Ø 8	Ø 10
PLACA PREF. tip 4 CONTRASINA B.A. -1	1	6	4	1.35	5.4		
	2	6	1	1.15	1.2		
	3	8	6	0.70		4.2	
	4	8	4	0.35		1.4	
	5	8	4	1.25		5.0	
	6	10	2	0.60			1.2
LUNGIME / DIAMETRE					6.6	10.6	1.2
GREUTATE / m. / DIAMETRE					0.222	0.395	0.617
GREUTATE / DIAMETRE					1.5	4.2	0.7
TOTAL (rot.) kg. :					1.6	4.4	1.0
TOTAL GENERAL (OB37) kg. :					7.0		

* BARELE DE ARMATURA SUNT CALCULATE PENTRU O SINGURA PLACA PREFABRICATA
 THE REINFORCING BARS ARE CALCULATED FOR A SINGLE ONE PRECAST PLATE.