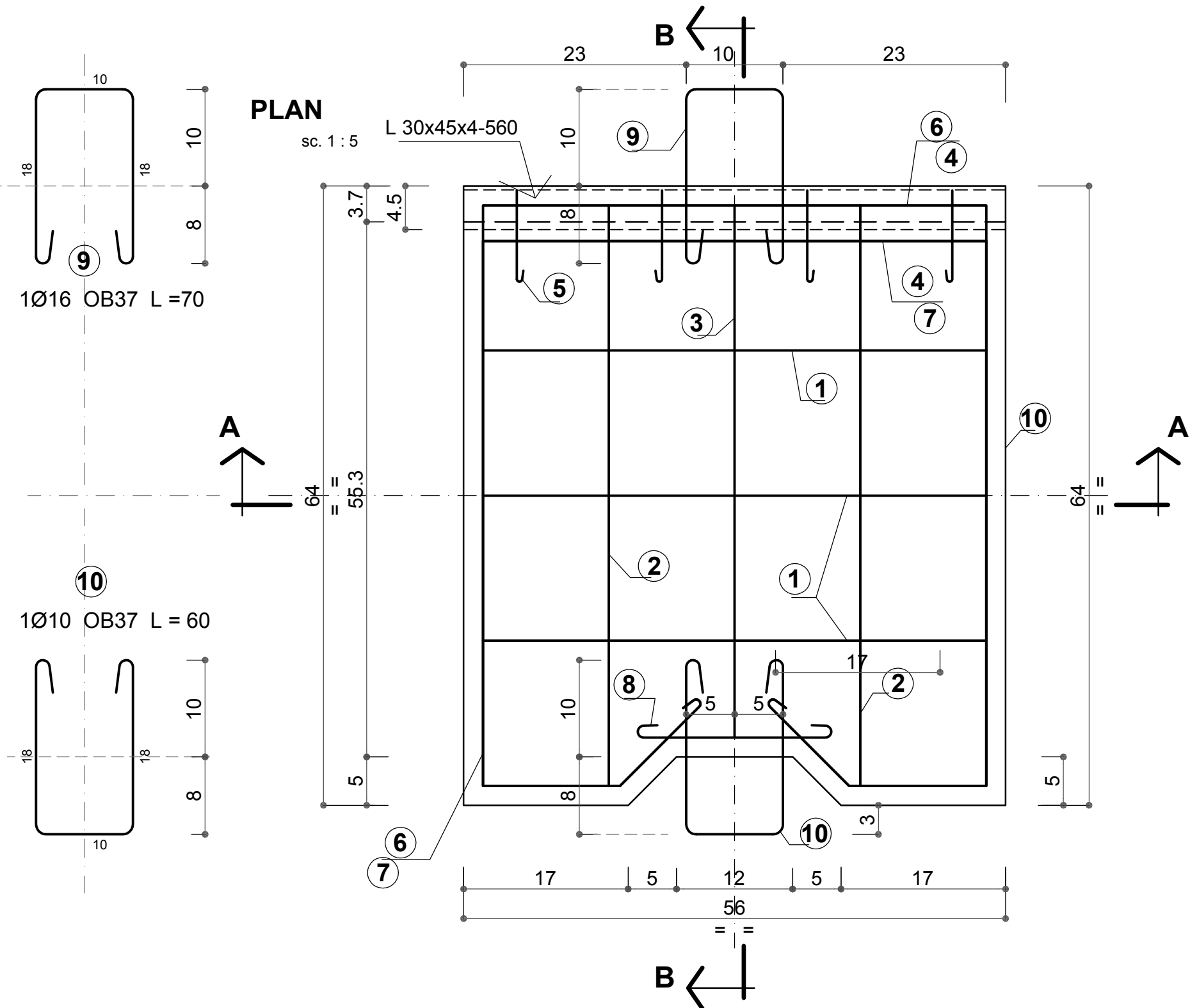


**PLACA tip 8 CONTRASINA de BETON ARMAT - 64x56x14 cm**  
**PRECAST PLATE type 8 REINFORCED CONCRETE COUNTER-RAIL - 64x56x14 cm**

- 2 buc. / 2 pcs.-

**MATERIALE / MATERIALS**

- BETON VIBRAT cu agregat din piatra sparta  
 VIBRATED CONCRETE with crushed stone aggregate  
**C18/22.5 (Bc22.5) CEM II/A-S 32.5N ; sort 0-16; A/C : 0.65; T3**
- ARMATURA / REINFORCEMENT : **OB37**
- ACOPERIRE / COVERING : **4 cm**
- CORNIER / ANGLE BAR -1 buc./pcs.-  
**30x45x4 mm, L = 56 cm 0.56x2.25 = 1.26 kg**



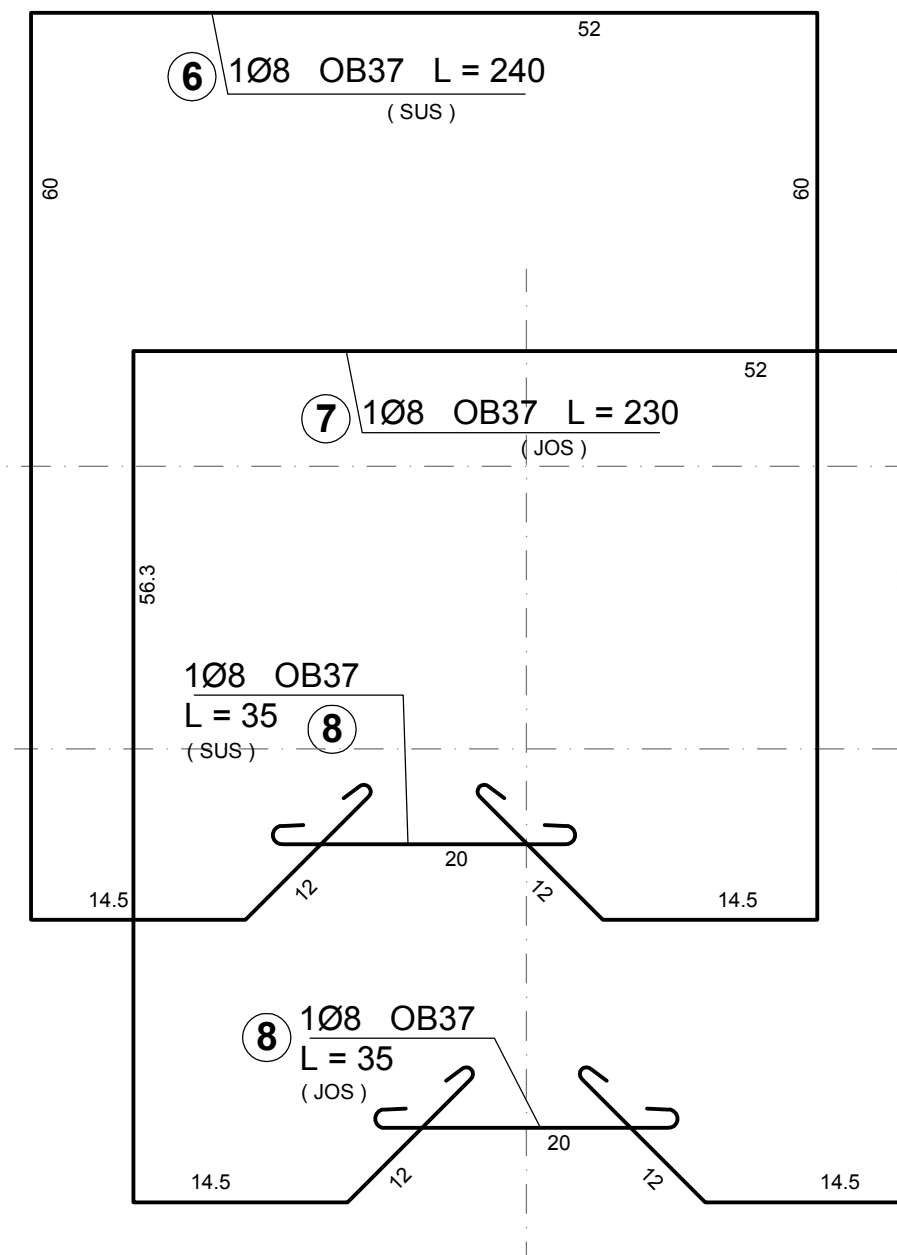
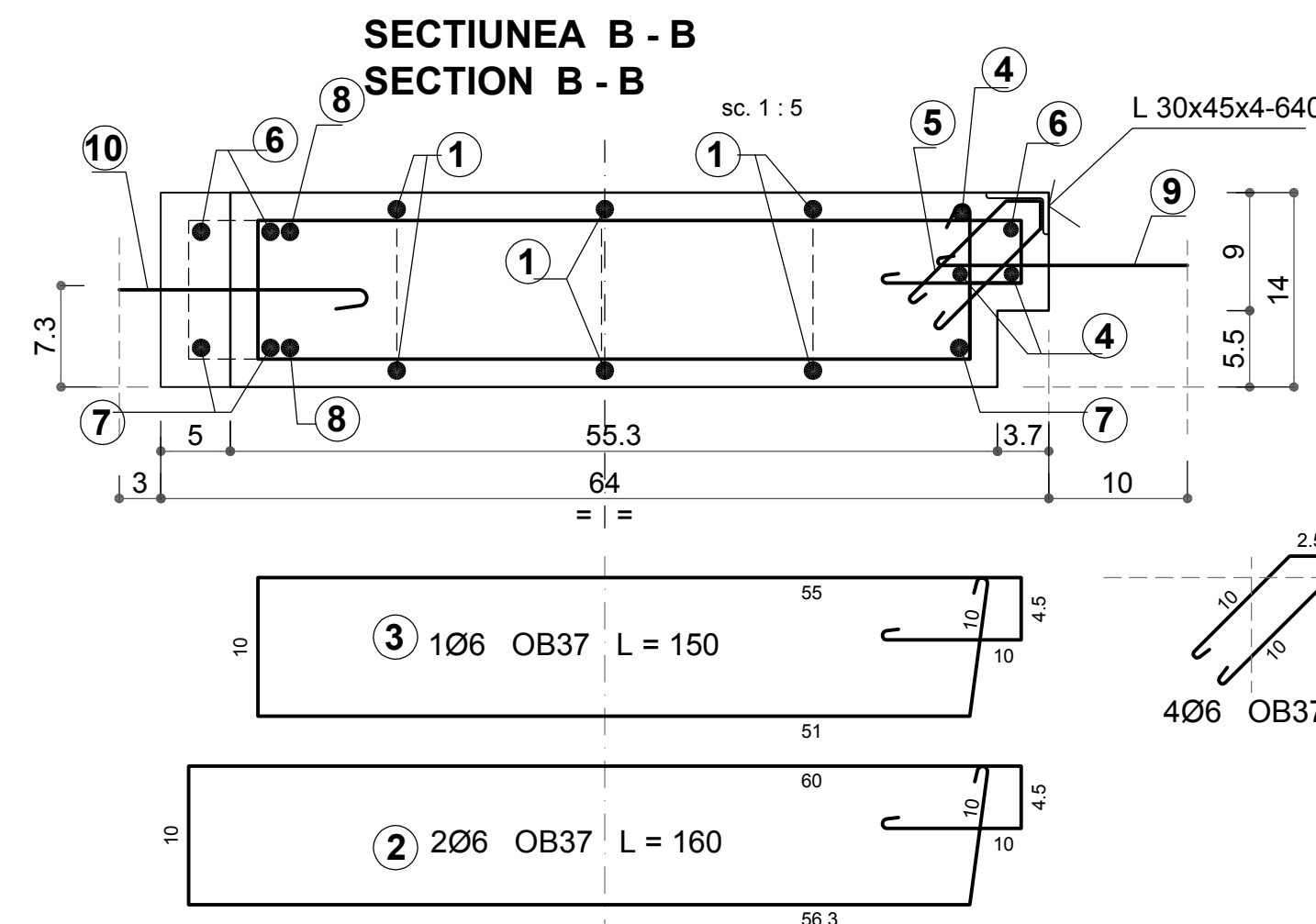
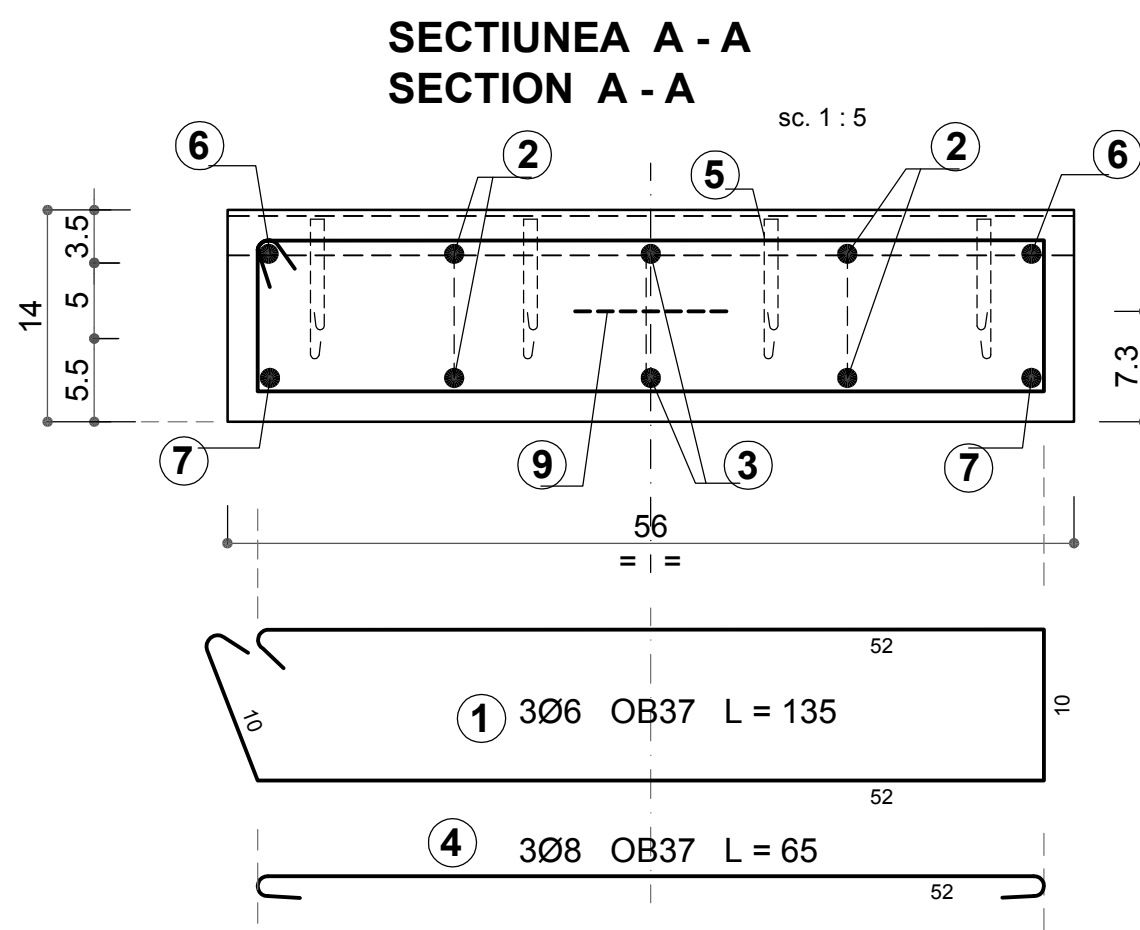
**TABLOU ARMARE  
 REINFORCEMENT TABLE**

ELEM. ELEMENT	MARCA MARK	Ø.	NR. BUC. No. of PCS.	LUNG. BARA BAR LENGHT -m-	LUNGIMI / DIAM. - LENGTHS / Ø.			
					OB37			
PLACA PREF. tip 8 CONTRASINA B.A. - 1 buc.-	1	6	3	1.35	4.1			
	2	6	2	1.60	3.2			
	3	6	1	1.50	1.5			
	4	8	3	0.65		2.0		
	5	6	4	0.35	1.4			
	6	8	1	2.40		2.4		
	7	8	1	2.30		2.3		
	8	8	2	0.35		0.7		
	9	16	1	0.70				0.7
	10	10	1	0.60				0.6
LUNGIME / DIAMETRE					10.2	7.4	0.6	0.7
GREUTATE / m. / DIAMETRE					0.222	0.395	0.617	1.578
GREUTATE / DIAMETRE					2.3	2.90	0.4	1.1
<b>TOTAL (rot.) kg. :</b>					<b>2.4</b>	<b>3.0</b>	<b>0.5</b>	<b>1.2</b>
<b>TOTAL GENERAL (OB37) kg. :</b>					<b>7.0</b>			

\* BARELE DE ARMATURA SUNT CALCULATE PENTRU O SINGURA PLACA PREFABRICATA  
 THE REINFORCING BARS ARE CALCULATED FOR A SINGLE ONE PRECAST PLATE.

**CARACTERISTICI PREFABRICATE  
 PREFABRICATED CHARACTERISTICS**

TIP PREFABRICAT PREFAB.ELEM.TYPE	VOLUM BETON Bc22.5 CONCRETE VOL. Bc22.5 - m³ -	MASA ELEMENT ELEMENT MASS	COFRAJ SHUTTERING - m² -	MARCA OTEL STEEL MARK - kg- OB37	TOTAL ARMATURA REINFORCEMENT - TOTAL
8	0.047 m³	117.5 kg	0.70	7.0	7.0
<b>TOTAL 2 buc. TOTAL 2 pcs.</b>	<b>0.220 m³</b>	<b>235 kg</b>	<b>1.40</b>	<b>14.0</b>	<b>14.0</b>



Indice Index	Data Date	Modificare Modification/Revision	Proiectant Designer	Aprobat Consultant Approved Consultant	Aprobat CFR Approved CFR

**GUVERNUL ROMANIEI**  
 ROMANIAN GOVERNMENT

**PROIECT FINANȚAT DE UNIUNEA EUROPEANĂ**  
 EUROPEAN UNION FINANCED PROJECT

**C.N.C.F. "C.F.R." - S.A.**  
 CLIENT / CLIENT

**ITAFERR**  
 GRUPPO FERROVIE DELLO STATO  
 Joint Venture leader

**Scott Wilson**

**OBERMEYER**  
 PLANEN + BERATEN GmbH

**TECNIC**  
 Consulting Engineers

**CONSULTANT / CONSULTANT**

Aprobat Approved	Șef proiect Project manager	R. Liuzza	Data Date	Semnătură Signature
Aprobat Approved	Coordonator Secțiune 1 Section 1 Coordinator	C. Gambelli	12.2011	
Verificat Checked	Verificator Verifier	Giuseppe Fioravanti	12.2011	

**SUBCONTRACTANT / SUBCONTRACTOR**

Aprobat Approved	Responsabil Subcontractant Subcontractant Responsible	A.Stanciu - Dinulescu	12.2011	
Întocmit Elaborated	Proiectant Designer	Georgescu Toma Cristian	12.2011	

Reabilitarea liniei de cale ferata Braşov - Simeria, parte componentă a coridorului IV Pan European, pentru circulația trenurilor cu viteză maximă de 160 km/h,  
**Tronsonul : Braşov - Sighişoara**  
 Rehabilitation of the railway line Braşov - Simeria, component Part of the IV Pan-European Corridor, for the trains circulation with maximum speed of 160 km/h,  
**Section : Braşov - Sighişoara**

2004/RO/16/P/PA/003  
 Faza / Phase:  
 D.E. / E.D.

Denumire desen / Drawing Title :  
 SUBSTAȚIE TRACȚIUNE - CONSTRUCȚIE EXTERIOARE - TRACTION SUBSTATION - OUTDOOR CONSTRUCTION  
**PLACA CONTRASINA PREFABRICATA DE BETON ARMAT tip 8 - 64x56x14 cm**  
**PRECAST COUNTER-RAIL REINFORCED CONCRETE PLATE type 8 - 64x56x14 cm**

Codificare / Codification System	Scara / Scale 1:5	LOT / LOT	Nr. / No 01 / 01
E A 5 1 0 1 E 0 0 B Y A C 0 0 0 4 0 1 4 0			