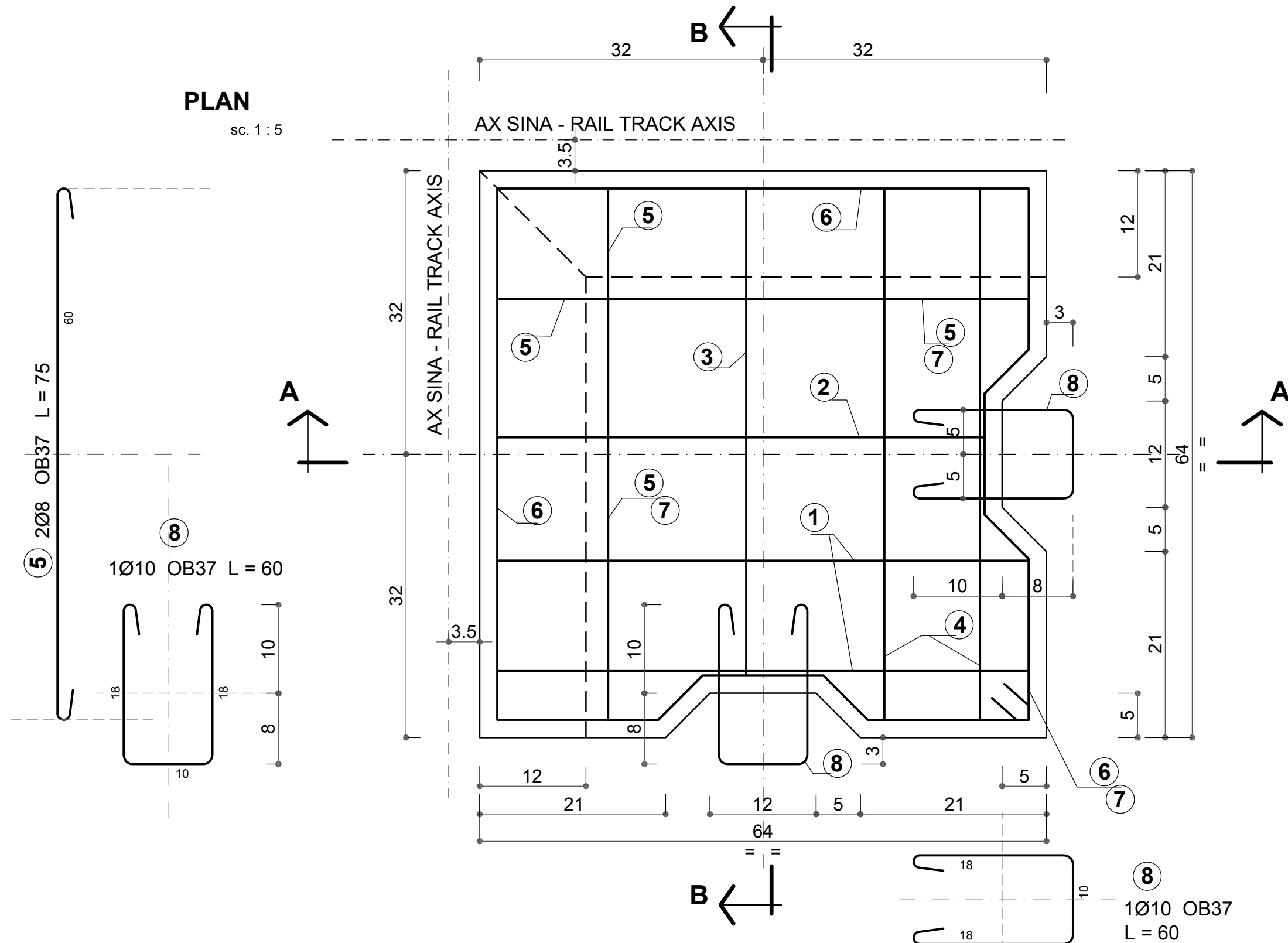


PLACA tip 9 CONTRASINA de BETON ARMAT - 64x64x14 cm
PRECAST PLATE type 9 REINFORCED CONCRETE COUNTER-RAIL - 64x64x14 cm

- 4 buc. / 4 pcs.-

PLAN

sc. 1 : 5



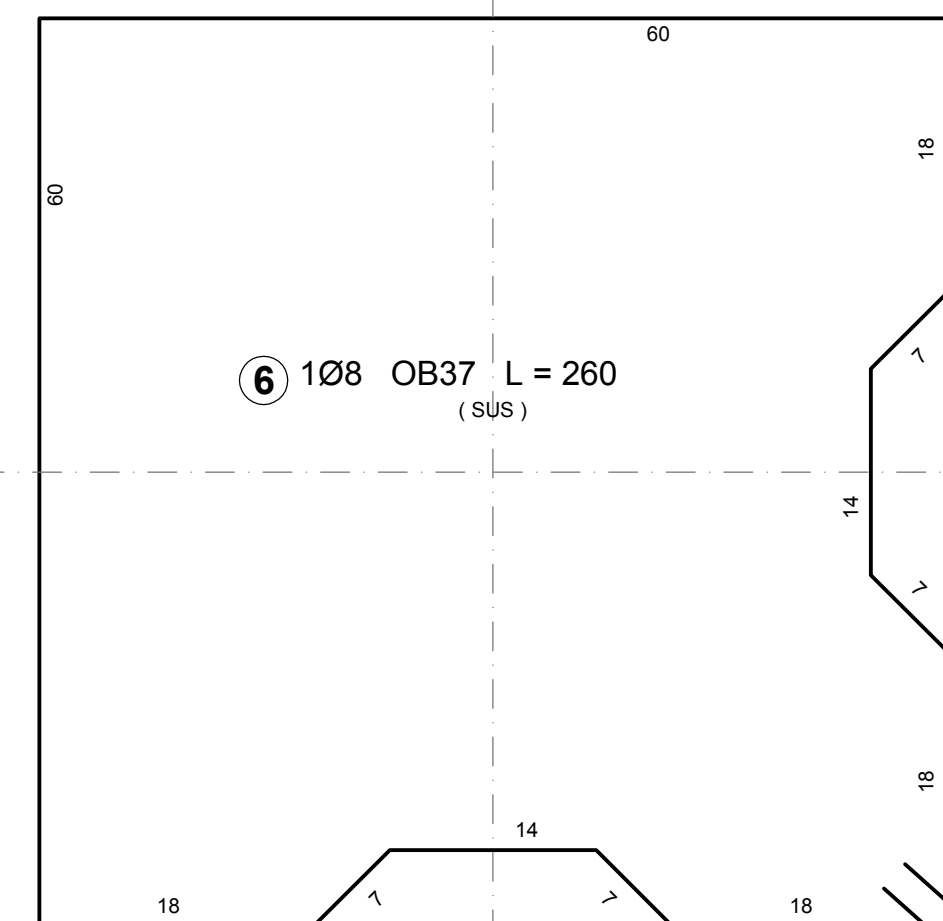
CARACTERISTICI PREFABRICATE
PREFABRICATED CHARACTERISTICS

TIP PREFABRICAT PREFAB.ELEM.TYPE	VOLUM BETON Bc22.5 CONCRETE VOL. Bc22.5 - m ³ -	MASA ELEMENT ELEMENT MASS	COFRAJ SHUTTERING - m ² -	MARCA OTEL STEEL MARK - kg.-	TOTAL ARMATURA REINFORCEMENT - TOTAL
9	0.056 m ³	130 kg	0.49	OB37	7.0
TOTAL 4 buc. TOTAL 4 pcs.	0.224 m ³	560 kg	1.96	28.0	28.0

TABLOU ARMARE
REINFORCEMENT TABLE

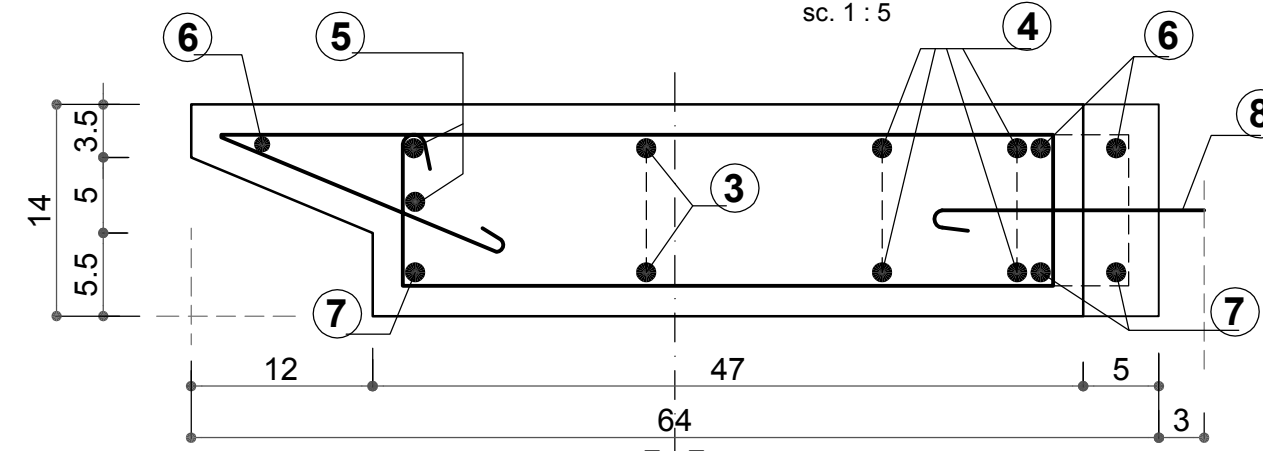
ELEM. ELEMENT	MARCA MARK	Ø.	NR. BUC. No. of PCS.	LUNG. BARA BAR LENGHT - m -	LUNGIMI / DIAM. LENGHTS / Ø.		
					Ø 6	Ø 8	Ø 10
PLACA PREF. tip 9 CONTRASINA BA. - 1 buc.-	1	6	2	1.60	3.2		
	2	6	1	1.50	1.5		
	3	6	1	1.50	1.5		
	4	6	2	1.60	3.2		
	5	8	4	0.75		3.0	
	6	8	1	2.60		2.6	
	7	8	1	2.15		2.2	
	8	10	2	0.60			1.2
LUNGIME / DIAMETRE					9.4	7.8	1.2
GREUTATE / m. / DIAMETRE					0.222	0.395	0.617
GREUTATE / DIAMETRE					2.1	3.1	0.7
TOTAL (rot.) kg. :					2.5	3.5	1.0
TOTAL GENERAL (OB37) kg. :					7.0		

* BARELE DE ARMATURA SUNT CALCULATE PENTRU O SINGURA PLACA PREFABRICATA
 THE REINFORCING BARS ARE CALCULATED FOR A SINGLE ONE PRECAST PLATE.



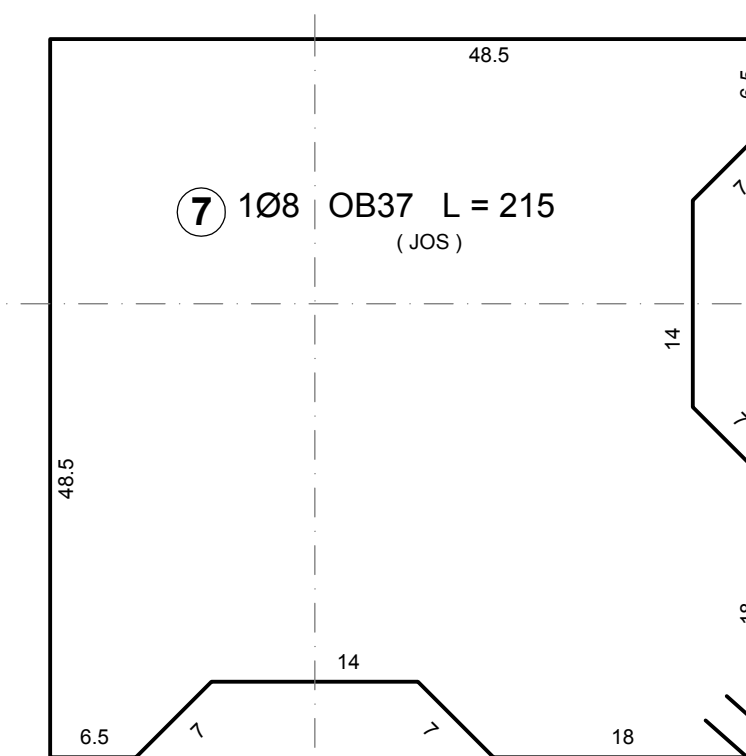
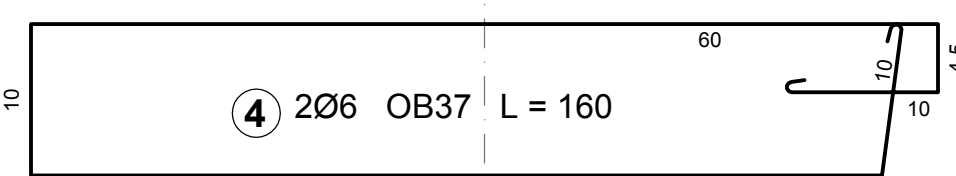
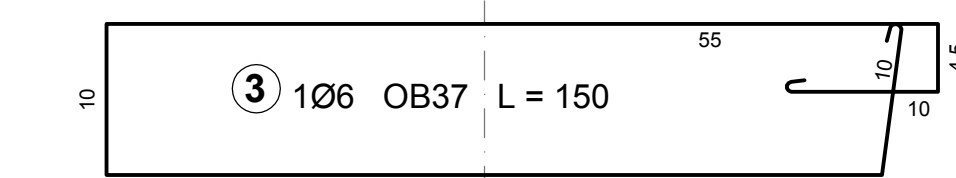
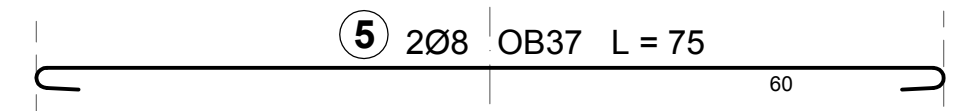
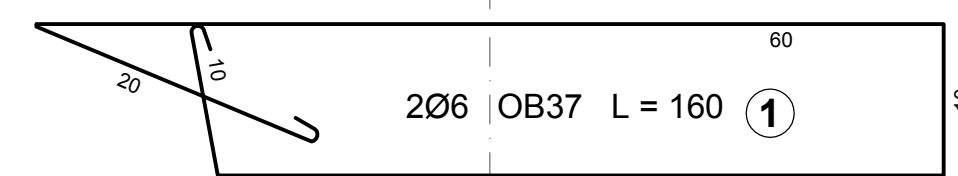
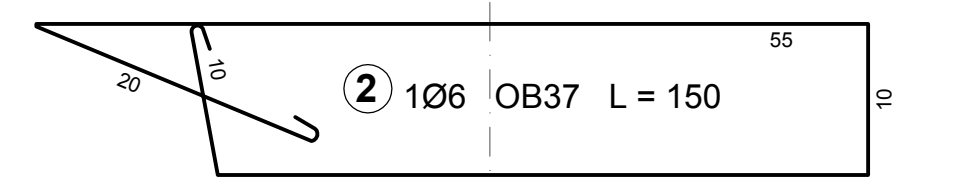
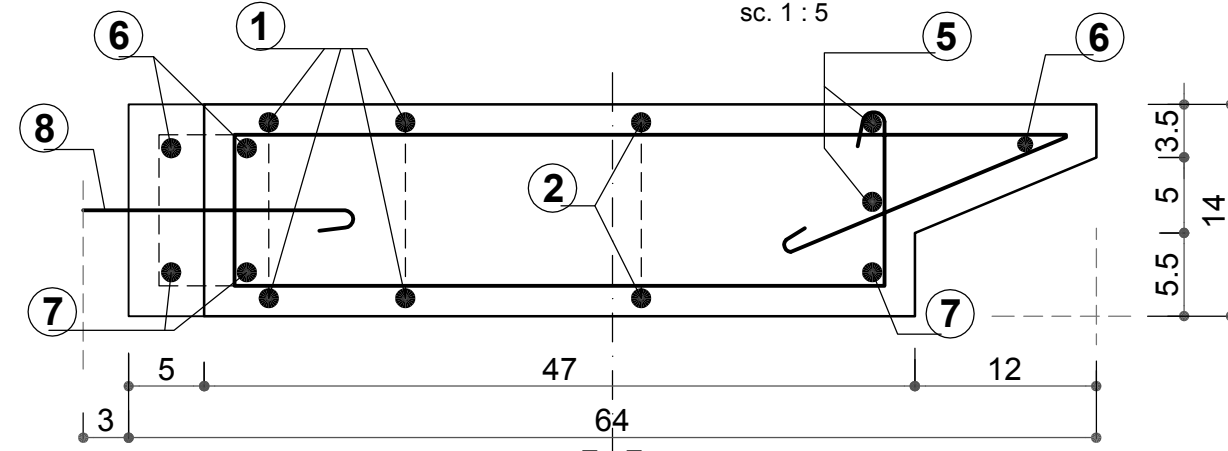
SECTIUNEA A - A
SECTIUNEA A - A

sc. 1 : 5



SECTIUNEA B - B
SECTIUNEA B - B

sc. 1 : 5



MATERIALE / MATERIALS

- BETON VIBRAT cu agregat din piatra sparta
 VIBRATED CONCRETE with crushed stone aggregate
C18/22.5 (Bc22.5) CEM II/A-S 32.5N ; sort 0-16; A/C : 0.65; T3
- ARMATURA / REINFORCEMENT : **OB37**
- ACOPERIRE / COVERING : **4 cm**

D					
C					
B					
A					
Indice Index	Data Date	Modificare Modification/Revision	Proiectant Designer	Aprobat Consultant Approved Consultant	Aprobat CFR Approved CFR



CLIENT / CLIENT

C.N.C.F. "C.F.R." - S.A.



CONSULTANT / CONSULTANT				Date	Semnatura Signature
Aprobat Approved	Sef proiect Project manager	R. Liuzza	12.2011		
Aprobat Approved	Coordonator Sectiune 1 Section 1 Coordinator	C. Gambelli	12.2011		
Verificat Checked	Verificator Verifier	Giuseppe Fioravanti	12.2011		

SUBCONTRACTANT / SUBCONTRACTOR				Date	Semnatura Signature
Aprobat Approved	Responsabil Subconsultant Subconsultant Responsible	A. Stanciu - Dinulescu	12.2011		
Intocmit Elaborated	Proiectant Designer	Georgescu Toma Cristian	12.2011		

Reabilitarea liniei de cale ferata Braşov - Simeria, parte componentă a coridorului IV Pan European, pentru circulaţia trenurilor cu viteza maximă de 160 km/h,
Tronsonul : Braşov - Sighişoara
 Rehabilitation of the railway line Braşov - Simeria, component Part of the IV Pan-European Corridor, for the trains circulation with maximum speed of 160 km/h,
Section : Braşov - Sighişoara

Denumire desen / Drawing Title :
 SUBSTATIE TRACTIUNE - CONSTRUCTII EXTERIOARE - TRACTION SUBSTATION - OUTDOOR CONSTRUCTION

PPLACA CONTRASINA PREFABRICATA DE BETON ARMAT tip 9 - 64x64x14 cm
PRECAST COUNTER-RAIL REINFORCED CONCRETE PLATE type 9 - 64x64x14 cm

Codificare / Codification System	Scara / Scale 1:5	LOT / LOT	Nr. / No 01 / 01
----------------------------------	----------------------	-----------	---------------------

E A 5 1 0 1 E 0 0 B Y A C 0 0 0 4 0 1 5 0