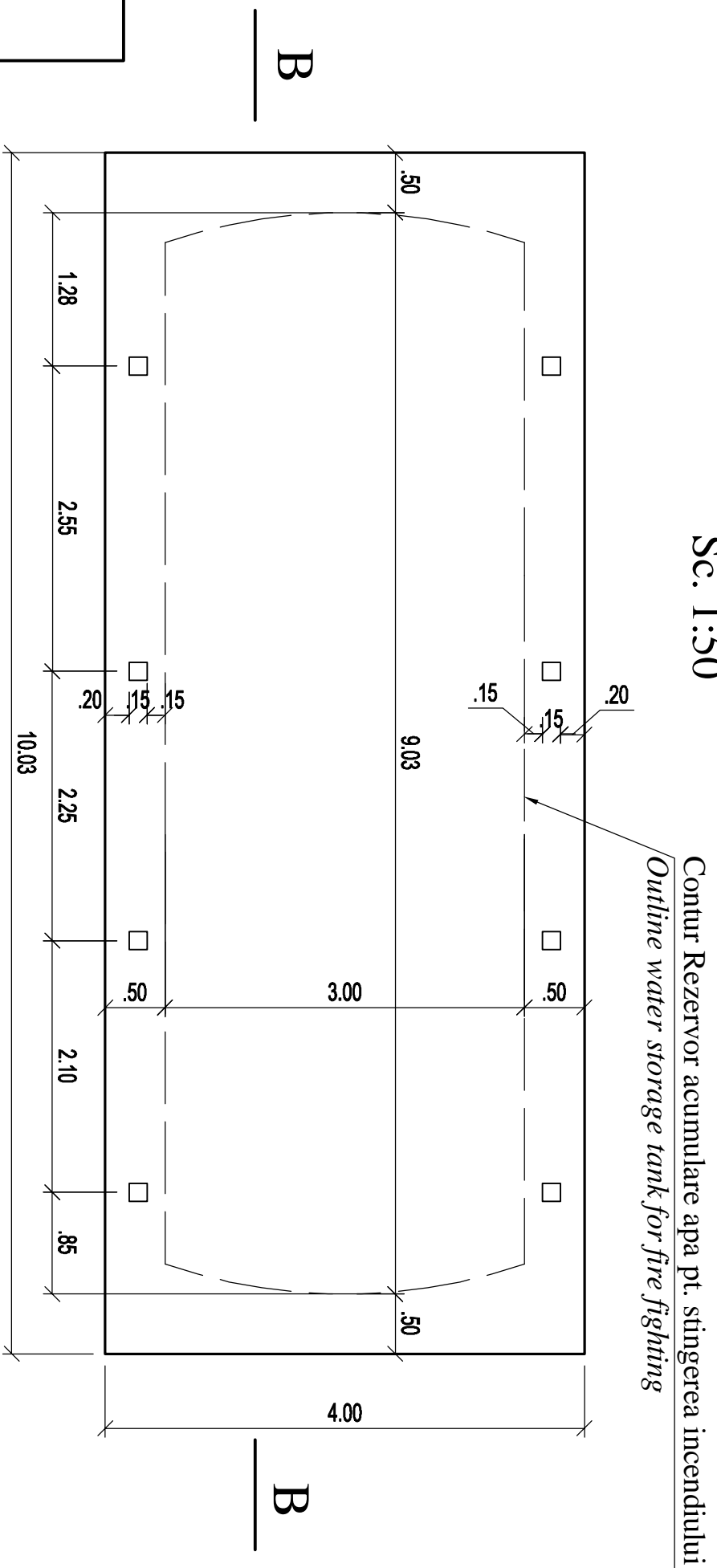


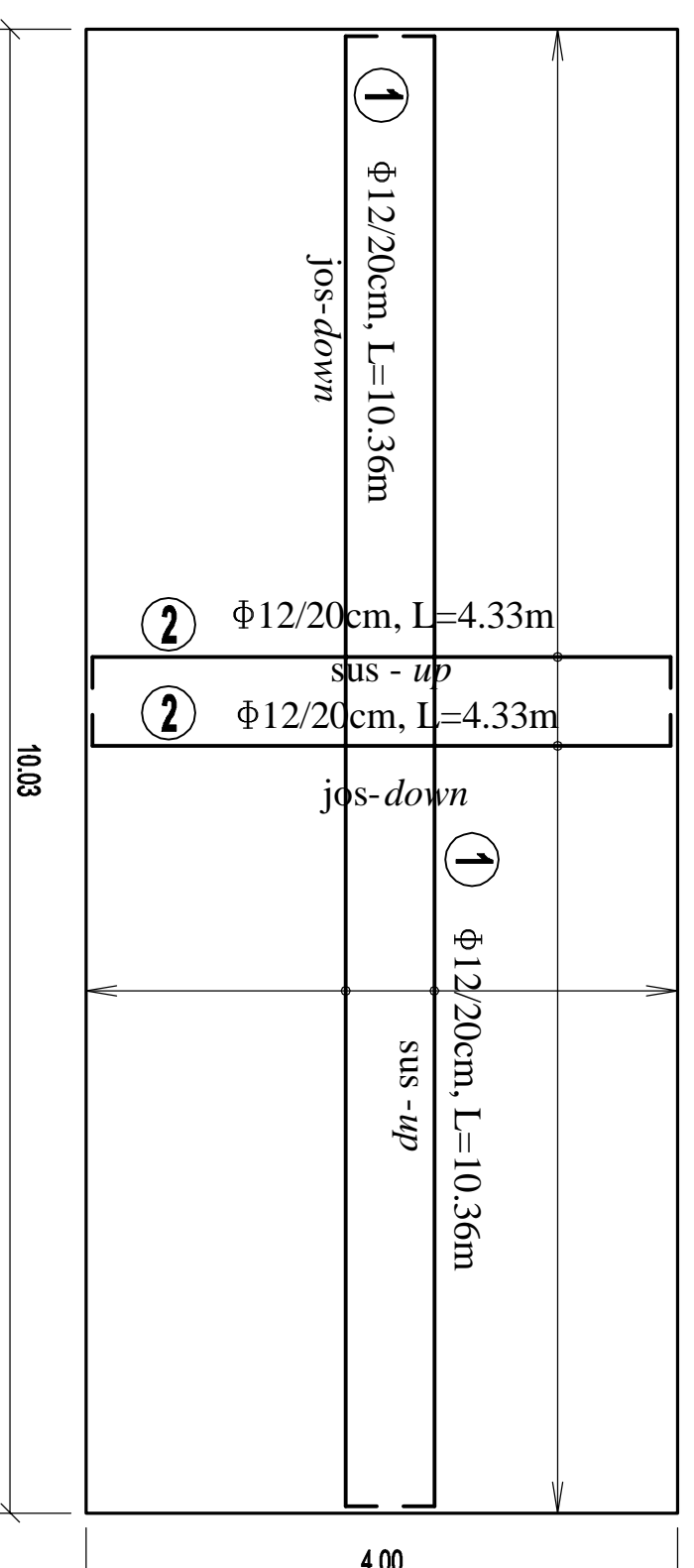
Plan Platforma - Platform Plan

Sc. 1:50



Plan armare platforma Platform reinforcing Plan

Sc. 1:50



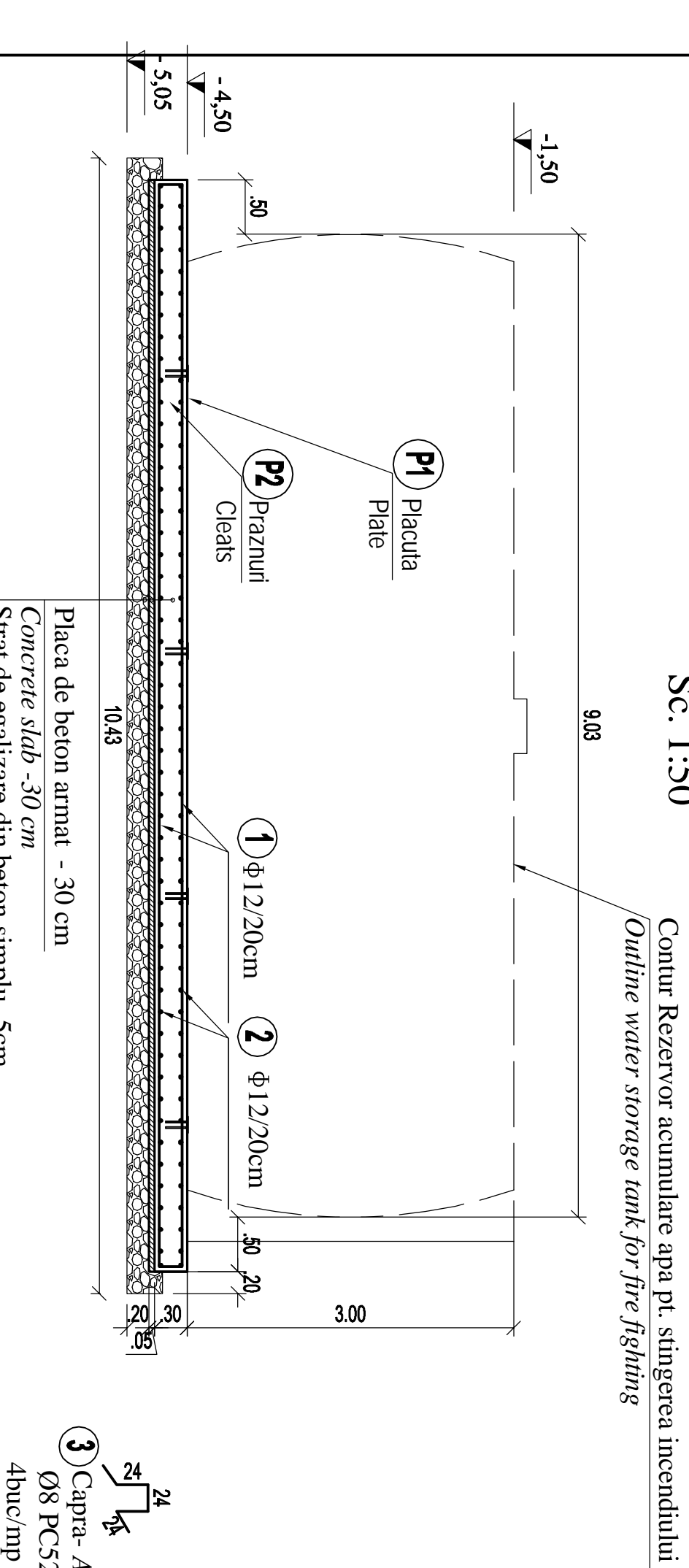
MATERIALE
 BETON SIMPLU: C 6/7.5
 BETON ARMAT : C12/15
 OTEL BETON : PC52
 LAMINATE : S235J2G3 (OL37.2n)
 Acoperirea cu beton a armaturilor de rezistenta : c = 4.5 cm.

MATERIALS
 CONCRETE : C 6/7.5
 REINFORCED CONCRETE : C12/15
 REINFORCEMENT : PC52
 ROLLED STEEL : S235J2G3 (OL37.2n)
 ROLLED STEEL : S235J2G3 (OL37.2n)
 Concrete covering of the main reinforcing bars : c = 4.5 cm.

± 0.00 = NSS proiectat / Superior level of the railway track

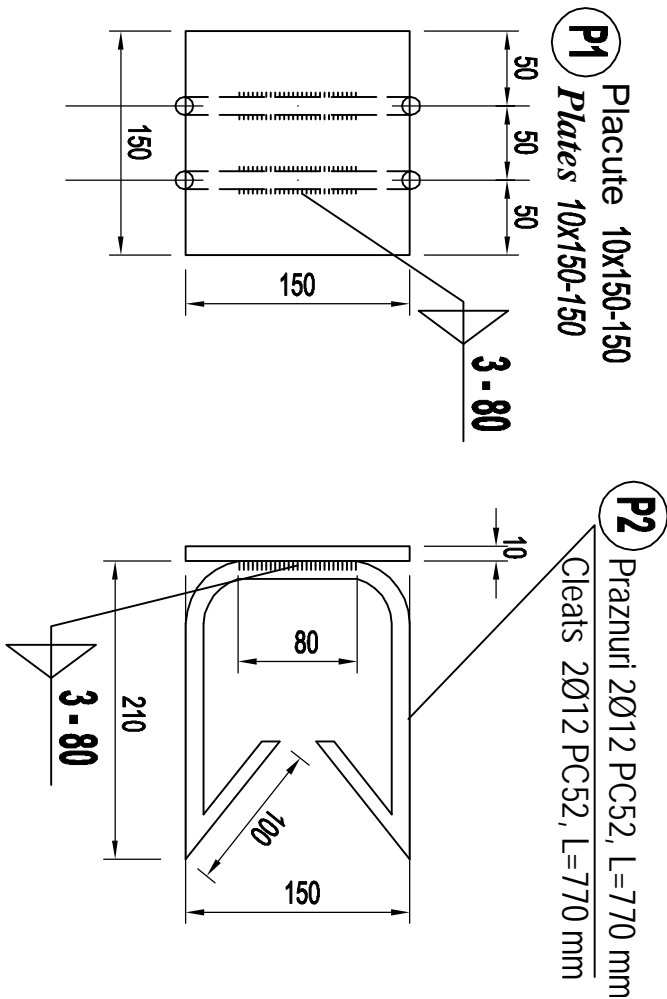
Secțiunea B - B - B Section

Sc. 1:50



Placute inglobate in platformele de b.a. Plates embedded in concrete platforms

Sc. 1:10



EXTRAS LAMINATE - BILL OF ROLLED SECTION CONFLICTII METALICE INGLOBATE IN BETON - METALLIC ELEMENTS IN CONCRETE

ELEMENT	POZITIA	SECȚIUNEA (mm)	LUNGIMEA (mm)	CALITATE OTEL	NR. BUC	GREUTATEA (Kg)	Kg/m	Kg/buc	Kg/m ²
PLACUTA INGLOBATA IN BETON	P1	10 x 150	150	S235J2G3	1	11.78	1.77	1.77	1.77
	P2	Ø12	770	S355J2G3	2	0.89	0.68	1.37	1.37
TOTAL 1									(Kg)
ELECTROZI ~ 3%									(Kg)
TOTAL 2. pt. 1BUC.									(Kg)
TOTAL GENERAL :					8 BUC.				(Kg)
									25.8

EXTRAS ARMATURA PLATFORMA - BILL OF REINFORCEMENT FOR CONCRETE PLATFORM

Marca	Φ	buc	lung (m)	Φ8	Φ12
1	12	42	10.36		435.12
2	12	102	4.33		441.66
3	8	161	1.20		193.20
Total m/Φ			193.20		876.78
Kg/ m/Φ			0.395		0.888
Kg/ Φ			76.31		778.58
TOTAL Kg					854.89

Cotarea armarii in "cm" ;
 Cotarea conflictilor metalice in "mm"
 Reinforcement dimensions in "cm" ;
 Dimensions of metallic elements in "mm"

D				
C				
B				
A				
Index	Date	Modificare	Proiectant	Approbat Consultant
		Modificator/revisiune	Designer	Approved Consultant

GUVERNUL ROMANIEI
 ROMANIAN GOVERNMENT

PROIECT FINANȚAT DE UNIUNEA EUROPEANĂ
 EUROPEAN UNION FINANCED PROJECT



C.N.C.F. "C.F.R." - S.A.

CLIENT / CLIENT
 OBERMEYER
 PLANER + BERATEN GmbH
 Consulting Engineers

CONSULTANT / CONSULTANT

Approved	Set project	R. Luzzza	Date	Semnatura
Approved	Project manager		12.2011	
Approved	Coordonator Sechiune 1	C. Gambelli	12.2011	
Verified	Section 1 Coordinator			
Checked	Verifier	Giuseppe Fioravanti	12.2011	

SUBCONTRACTANT / SUBCONTRACTOR

Approved	Responsabil Subcontractant	A. Stancu - Dinulescu	12.2011	
Approved	Subcontractant Responsible			
Elaborated	Proiectant Designer	Andreea Stancu	12.2011	

Reabilitarea liniei de cale ferata Braşov - Simeria, parte componentă a a coridorului IV Pan European, pentru circulația trenurilor cu viteză maximă de 160 km/h.
 Tronsoanul : Braşov - Sighişoara
 Rehalbation of the railway line Braşov - Simeria, component Part of the IV Pan-European Corridor, for the trains circulation with maximum speed of 160 km/h.
 Section : Braşov - Sighişoara

Denumire desen / Drawing Title :
 PLATFORMA BETON PENTRU SUSTINERE REZERVOR DE ACUMULARE APA
 PENTRU STINGEREA INCENDIULUI
 CONCRETE PLATFORM SUPPORT FOR WATER STORAGE TANK
 FIRE FIGHTING

Coeficient / Codification System	Scara / Scale	LOT / LOT	Nr. / No
E A S I 1	1:50 / 1:10		01 / 01
0 1	E	0 0	0 0
0 1	E	0 0	0 0
0 1	E	0 0	0 0
0 1	E	0 0	0 0
0 1	E	0 0	0 0
0 1	E	0 0	0 0