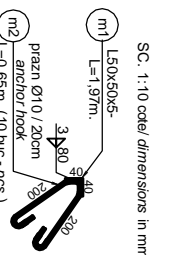
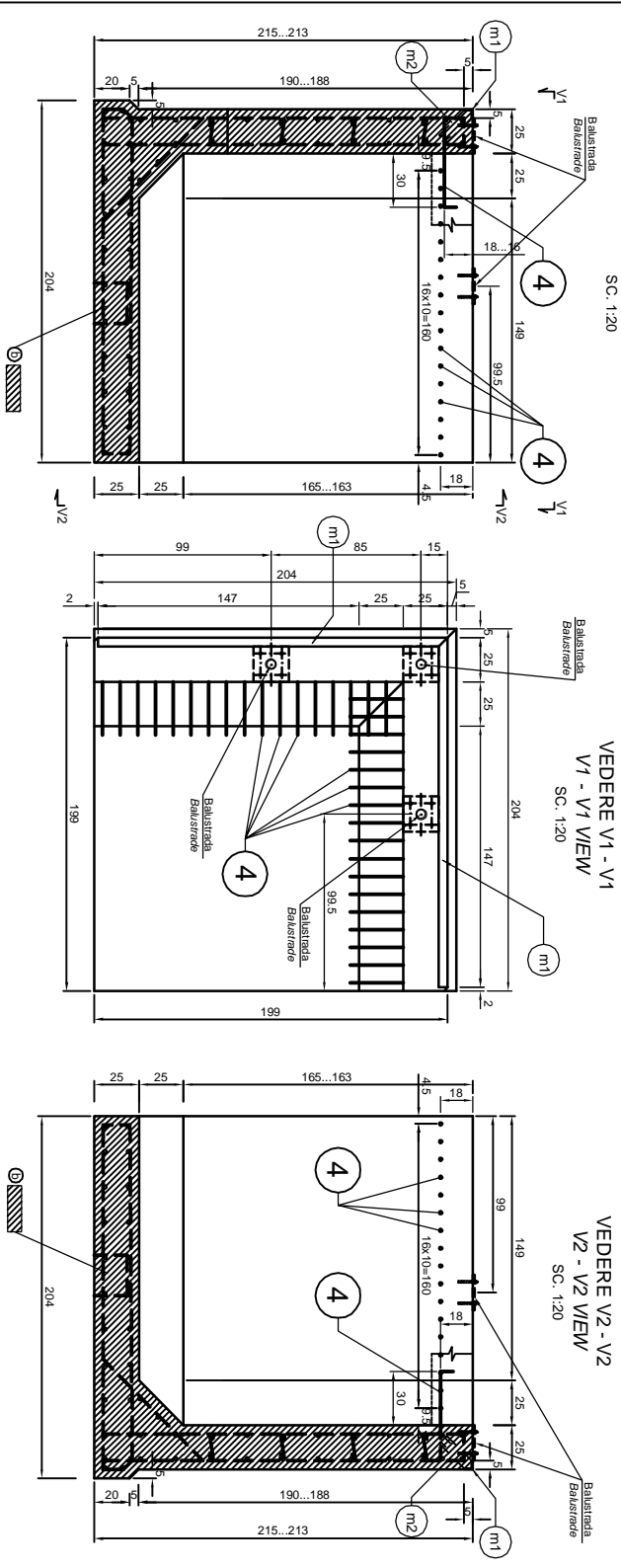
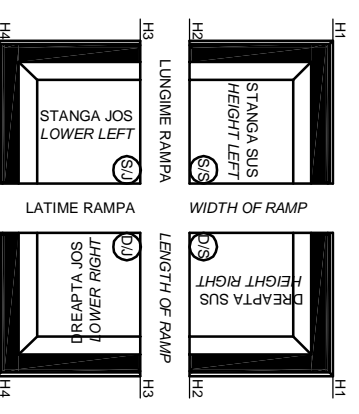


COFRAU ELEMENT DE COLT MONOLIT ZRC-PIATA  
SHUTTER OF CAST-IN-PLACE CONCRETE  
CORNER ELEMENT ZRC-MARKET

SC. 1:120  
m1 - L50x50x5 - 2buc x 1,97m x 3,77kg/m = 15,30kg  
m2 - Ø10 OB37 - 20buc x 0,65m = 13,00m x 0,61kg/m = 8,30kg  
OTEL / STEEL : S235LD33 (OL37) TOTAL = 23,6kg



SCHEMA DE DISPUNERE A ELEMENTELOR DE COLT DIN BETON ARMAT MONOLIT (in planşa este desenaat elementul de colt "stanga sus")  
THE SCHEME FOR REPLACING THE CORNER ELEMENTS MADE OUT MONOLITH REINFORCED CONCRETE (in the drawing, the corner element is in height left corner of the plan).



⊗ BETON ARMAT, vibra: C 25/30 - P4 - T3 - IA 32,5/0...16  
OTEL, BETON : OB37, PC52  
LAMINATE : S235LD33 (OL37)  
⊙ REINFORCED CONCRETE, vibrated: C 25/30 - P4 - T3 - IA 32,5/0...16  
REINFORCEMENT : OB37, PC52  
ROLLED STEEL : S235LD33 (OL37)

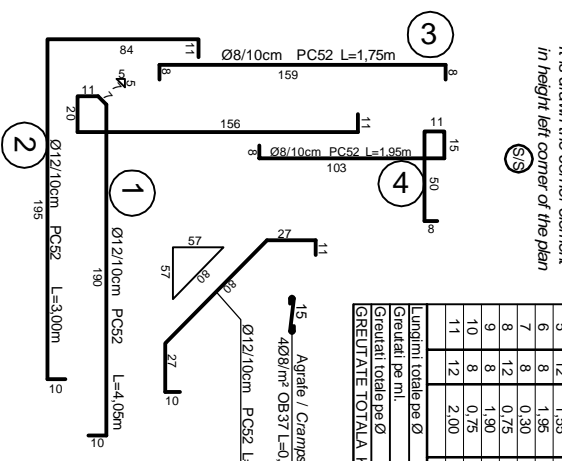
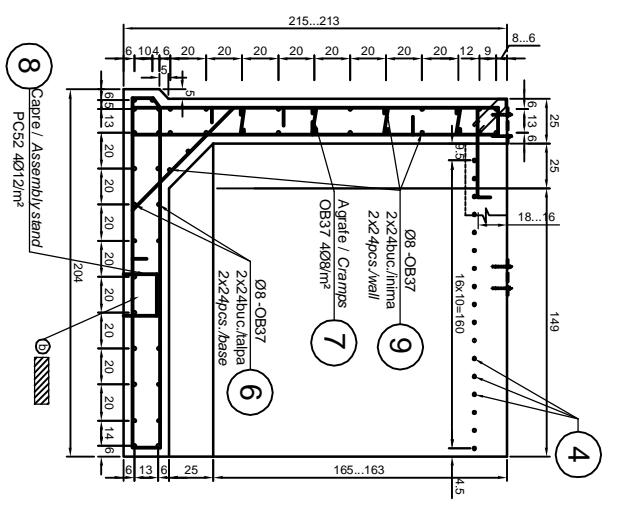
ARMARE ELEMENT DE COLT MONOLIT ZRC-PIATA  
REINFORCING CAST-IN-PLACE  
CORNER ELEMENT ZRC-MARKET

SC. 1:20

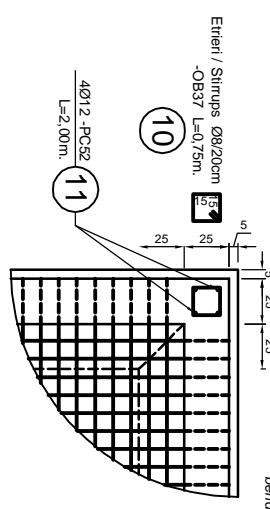
Este desenaat elementul de colt "stanga sus"  
It is drawn the corner element in height left corner of the plan

EXTRAS ARMATURA BILL OF REINFORCEMENT

Marca	Ø	Lungimea unei bare Bar length No. pcs.	Nr. Bare	Lungimi pe diametre / Lengths and diameters	PC52	Ø8	Ø12
1	12	4,05	34				137,70
2	12	3,00	34				102,00
3	8	1,75	34				59,50
4	8	1,95	34				66,30
5	12	1,55	30				46,50
6	8	1,85	48				93,60
7	8	0,30	32				9,60
8	12	0,75	16				12,00
9	8	1,90	48				91,20
10	8	0,75	10				7,50
11	12	2,00	4				8,00
Lungimi totale pe Ø				201,90	125,80	306,20	
Gradul pe ml.				0,395	0,395	0,888	
Gradul totale pe Ø				79,80	49,70	272,00	
GREUTATE TOTALA KG.						321,70	



NOTA  
Pentru toate armaturile, raza de curbură de îndoire va fi egala cu 3d  
NOTE  
For all reinforcements, the radius of mandrel for bending is equal to 3d



<b>CLIENT / CLIENT</b> GVERNUL ROMÂNIEI ROMANIAN GOVERNMENT				<b>C.N.C.F. - S.A.</b>			
<b>CONSULTANT / CONSULTANT</b> R. Lutzan C. Gimbelli Giuseppe Fioravanti		Date 12.2011 12.2011 12.2011		Date 12.2011 12.2011 12.2011		Date 12.2011 12.2011 12.2011	
<b>SUBCONTRACTANT / SUBCONTRACTOR</b> A. Simbidiu - Dnulescu Popescu Ramona Dan		Date 12.2011		Date 12.2011		Date 12.2011	
Denumire desen / Drawing Title: ELEMENT DE COLT MONOLIT PENTRU RAMPĂ TIP ZRC-PIATA - COFRAJ SI ARMARE / CAST IN PLACE CORNER ELEMENT FOR LOADING LEDGE ZRC-MARKET TYPE - FORMWORK AND REINFORCEMENT DETAILS							
Codificare / Codification System		Scara / Scale 1:20		Urmas / UR		Nr. / No 01/15	
EAS1		01 E		00 BC		00 0	
EAS1		01 E		00 BC		00 0	